

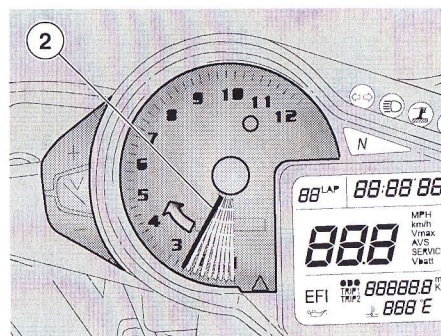
SETTING THE RED LINE THRESHOLD (WITH ENGINE OFF ONLY)

When the maximum rpm set is exceeded, the red line warning light (red) (1) on the dashboard starts blinking.

NOTE The red line threshold, which operates the red line light, can only be set with the engine off and the odometer displayed. Setting range is 2,000 - 12,000 rpm.

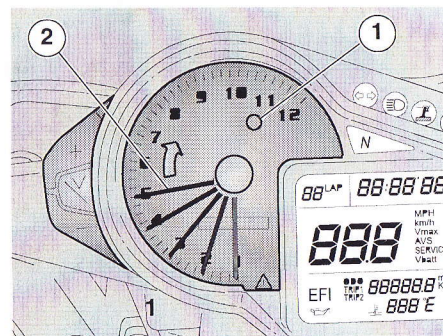
Factory setting is 6,000 rpm.

To view red line threshold setting, hold down the "Trip/V" button for at least 3 seconds. The rev counter pointer (2) will point the corresponding rpm for three seconds.



To set the red line threshold:

- ◆ Turn the ignition key to "O".
- ◆ Allow some time for the dashboard check-up routine.
- ◆ Hold down the "Trip/V" button for at least three seconds: the rev counter pointer (2) will point the current red line setting.
- ◆ You have three seconds to change setting as desired (as long as the rev counter pointer (2) is pointing current red line setting).
- ◆ Use the "+" button to change setting. Press briefly to increase setting by 100 rpm. Hold down a little longer to increase by 1000 rpm.
- ◆ After reaching full scale value (12,000 rpm), the pointer will go back to zero automatically.



- ◆ Three seconds after last pressing the "+" button, the new red line threshold is stored. This is confirmed by the red line light (1) coming on for three seconds, while the pointer (2) will go back to zero.
- ◆ If the engine is started during the setting procedure, the last setting is retained. The new threshold setting is also lost if the battery is disconnected during the setting procedure, and the last setting is retained.