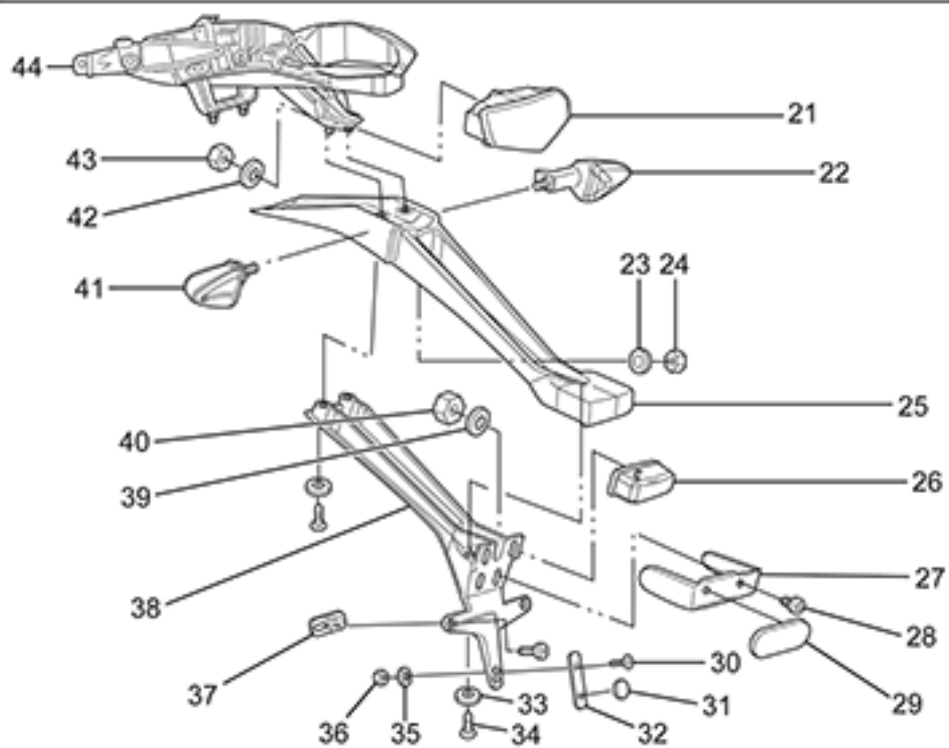
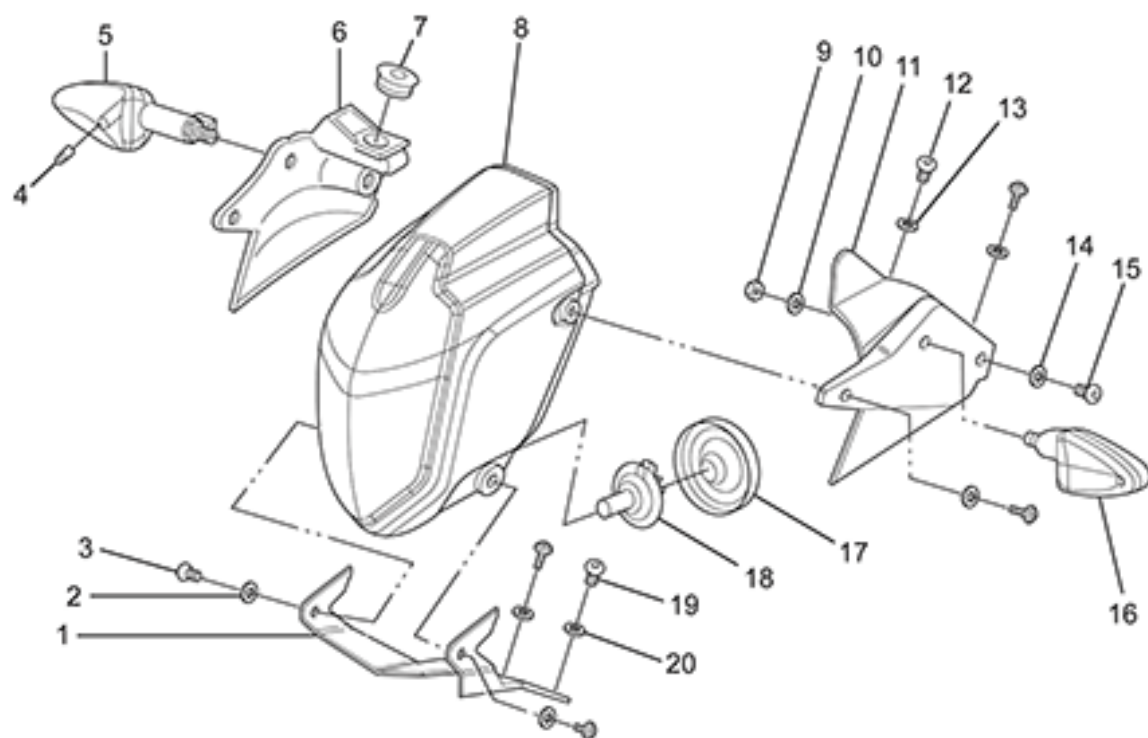


**Zero Motocycles**  
**DS 2019 Exploded Views**

ZEV0053 - Lighting



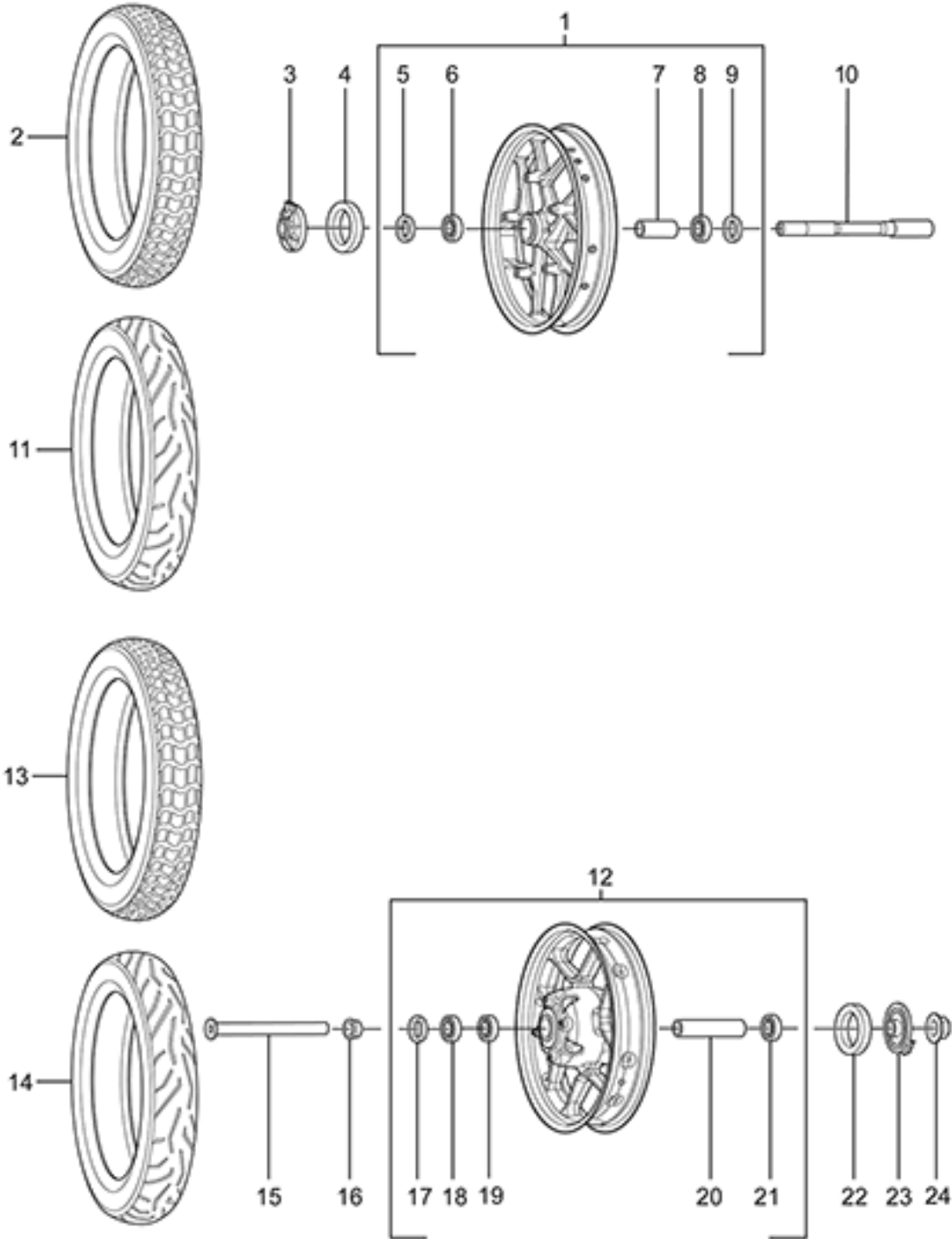
**ZEV0053 - Lighting**

| Callout | Part Number | Part Name   | Qty. per Motorcycle |
|---------|-------------|---|---------------------|
| 1       | 20-05910    | HEADLIGHT BRACKET   | 1                   |
| 2       | 90-02103    | WASHER ISO 7089 6-200HV ZM-F-01   | 4                   |
| 3       | 90-07281    | HEXAGON SOCKET BUTTON HEAD SCREWS ISO 7380<br>M6X12-8.8 ZM-F-01 REV 03 ZM-L-01 REV 01 | 1                   |
| 4       | 65-08016    | TURN SIGNAL BULB 12v ry 10w   | 1                   |
| 5       | 65-03462    | TURN SIGNAL FR-RH RR-LH   | 1                   |
| 6       | 24-08091    | HEADLIGHT MOUNT RIGHT FOR ABS   | 1                   |
| 7       | 27-08034    | 12V ACCESSORY COVER, SMALL  | 1                   |
| 8       | 45-03679    | HEADLIGHT ASSY, 60/55W, TRIOM   | 1                   |
| 9       | 90-02072    | HEXAGON THIN NUT DIN 439-B M10 1.5-04 ZM-F-01   | 2                   |
| 10      | 90-02043    | TOOTHED LOCK WASHER WITH EXTERNAL TEETH DIN 6797<br>A M10-B85 ZM-F-01                 | 2                   |
| 11      | 24-08092    | HEADLIGHT MOUNT LEFT FOR ABS  | 1                   |
| 12      | 90-04084    | HEXAGON SOCKET BUTTON HEAD CAP SCREW ISO 7380<br>M5X16-8.8 ZM-F-11 REV 03             | 4                   |
| 13      | 90-04085    | WASHER M5 X 11 X 1 NYLON 6/6 BLACK  | 4                   |
| 14      | 90-04085    | WASHER M5 X 11 X 1 NYLON 6/6 BLACK  | 4                   |
| 15      | 90-04084    | HEXAGON SOCKET BUTTON HEAD CAP SCREW ISO 7380<br>M5X16-8.8 ZM-F-11 REV 03             | 4                   |
| 16      | 65-03463    | TURN SIGNAL FR-LH RR-RH   | 1                   |
| 17      | PA-338      | HEADLAMP BULB SEAL  | 1                   |
| 18      | 65-08002    | SDS HEADLIGHT BULB  | 1                   |
| 19      | 90-02109    | HEXAGON SOCKET BUTTON HEAD CAP SCREW ISO 7380<br>M5X12-8.8 ZM-F-01                    | 2                   |
| 20      | 90-02101    | WASHER ISO 7089 5-200HV ZM-F-01   | 4                   |
| 21      | 65-04459    | LED TAIL LIGHT TRIOM  | 1                   |
| 22      | 65-03463    | TURN SIGNAL FR-LH RR-RH   | 1                   |
| 23      | 90-02043    | TOOTHED LOCK WASHER WITH EXTERNAL TEETH DIN 6797<br>A M10-B85 ZM-F-01                 | 2                   |
| 24      | 90-02072    | HEXAGON THIN NUT DIN 439-B M10 1.5-04 ZM-F-01   | 2                   |
| 25      | 24-04439    | SDS TAIL POD TOP<br>NOTE: Top half only. Order bottom half PN: 24-05158               | 1                   |
| 26      | 65-04460    | LICENSE PLATE LIGHT   | 1                   |
| 27      | 24-05159    | REFLECTOR MOUNT BRACKET   | 1                   |
| 28      | 90-08041    | PHILIPS FLAT HEAD SHEET METAL SCREW TYPE AB NO 10<br>X 1/2 STEEL ZM-F-11 REV 02       | 10                  |
| 29      | 20-03487    | REFLECTOR, OVAL, ADH BACK, RED ECIE   | 1                   |
| 30      | 90-05244    | HEXAGON SOCKET COUNTERSUNK HEAD SCREW ISO<br>10642 M5X12-10.9 ZM-F-01 REV 03          | 4                   |
| 31      | 20-05241    | LICENSE PLATE BUMPER  | 1                   |

|    |          |   |    |
|----|----------|---|----|
| 32 | 24-05292 | LICENSE PLATE BRACKET EXTENSION LOWER<br>NOTE: ONLY USED IN EU/AUS REGION             | 1  |
| 33 | 90-02103 | WASHER ISO 7089 6-200HV ZM-F-01   | 10 |
| 34 | 90-07281 | HEXAGON SOCKET BUTTON HEAD SCREWS ISO 7380<br>M6X12-8.8 ZM-F-01 REV 03 ZM-L-01 REV 01 | 2  |
| 35 | 90-04085 | WASHER M5 X 11 X 1 NYLON 6/6 BLACK  | 4  |
| 36 | 90-02053 | PREVAILING TORQUE TYPE NUT DIN 985 M5-08 ZM-F-01<br>REV 02                            | 8  |
| 37 | 24-05161 | LICENSE PLATE BRACKET EXTENSIONS<br>NOTE: ONLY USED IN EU/AUS REGIONS                 | 2  |
| 38 | 24-05158 | SDS TAIL POD BOTTOM<br>NOTE: Bottom half only. Order top half PN: 24-04439            | 1  |
| 39 | 90-02101 | WASHER ISO 7089 5-200HV ZM-F-01   | 4  |
| 40 | 90-02053 | PREVAILING TORQUE TYPE NUT DIN 985 M5-08 ZM-F-01<br>REV 02                            | 8  |
| 41 | 65-03462 | TURN SIGNAL FR-RH RR-LH   | 1  |
| 42 | 90-02103 | WASHER ISO 7089 6-200HV ZM-F-01   | 10 |
| 43 | 90-02054 | PREVAILING TORQUE TYPE NUT DIN 985 M6-08 ZM-F-01                                      | 4  |
| 44 | 20-04876 | SDS TAIL FRAME  | 1  |



ZEV0055 - Wheel Assy



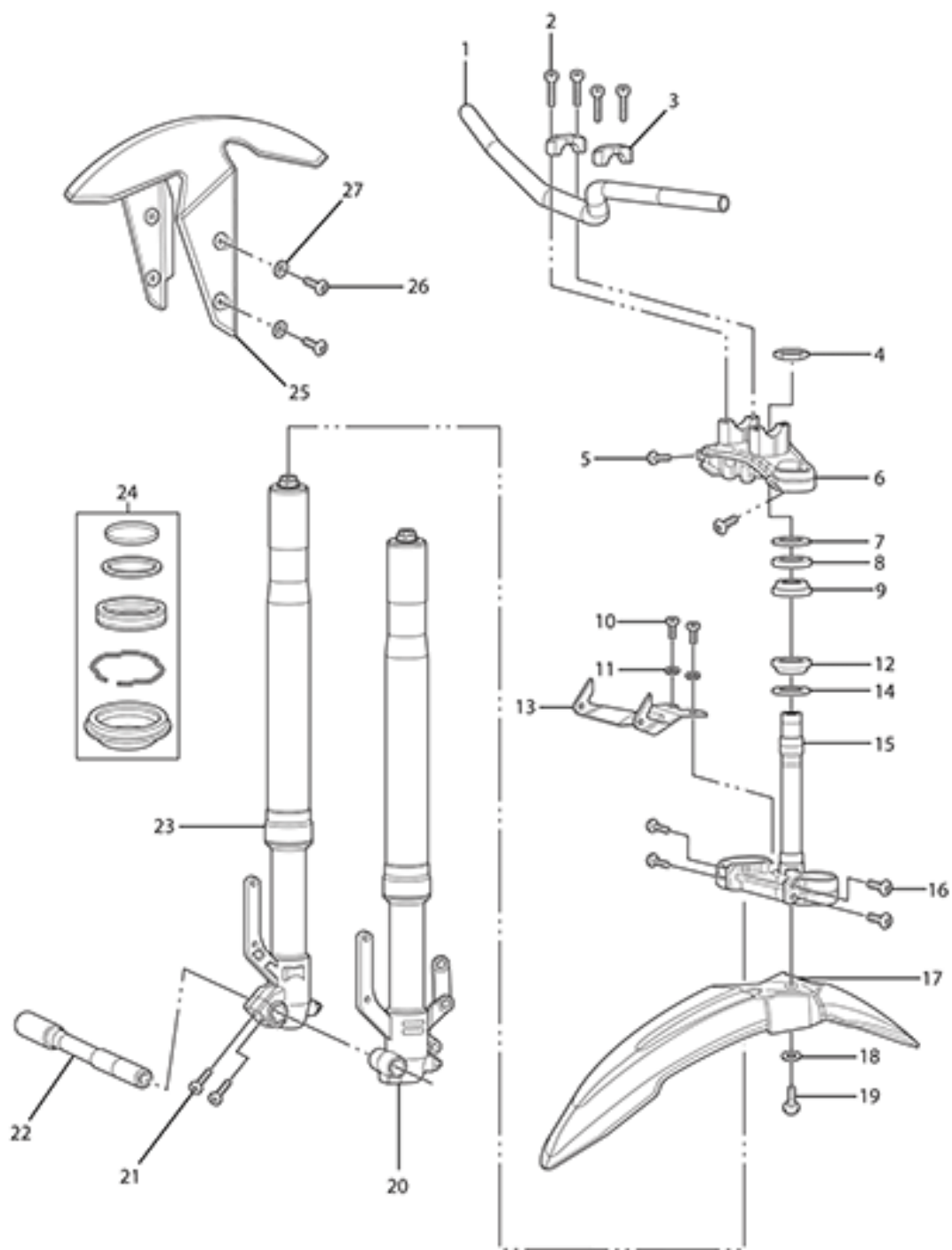
## ZEV0055 - Wheel Assy

| Callout | Part Number                              | Part Name  | Qty. per Motorcycle |
|---------|--|--|---------------------|
| 1       | 23-08066-4                               | 2.50X19 DS FRONT CAST WHEEL ASSY SILVER BLACK  | 1                   |
| 2       | 23-08002                                 | TIRE, FRONT, 100/90-19 57H, PIRELLI MT-60  | 1                   |
| 3       | 45-07496                                 | MPI WHEEL SPEED SENSOR   | 1                   |
| 4       | 25-08080                                 | ABS MAGNET RING  | 1                   |
| 5       | 23-07774                                 | 6204 BEARING DUST SEAL   | 2                   |
| 6       | 20-06138                                 | BEARING 6204<br>NOTE: Bearing used as swing arm bearing in some models and as the wheel bearing (qty of 5; 2 in front and three in rear wheel) in 2015 and later models.<br>NOTE: Manufacturer part number is 6204-2RS | 2                   |
| 7       | 23-07775                                 | FRONT WHEEL BEARING TUBE   | 1                   |
| 8       | 20-06138                                 | BEARING 6204<br>NOTE: Bearing used as swing arm bearing in some models and as the wheel bearing (qty of 5; 2 in front and three in rear wheel) in 2015 and later models.<br>NOTE: Manufacturer part number is 6204-2RS | 2                   |
| 9       | 23-07774                                 | 6204 BEARING DUST SEAL   | 2                   |
| 10      | 23-07491                                 | HOLLOW AXLE FRONT  | 1                   |
| 11      | <i>Not Applicable to this Bike Model</i> |  |                     |
| 12      | 23-08056-4                               | WHEEL 3.50X17 SDS REAR CAST WHEEL ASSY 16MY IMPL BLACK-SILVER C  | 1                   |
| 13      | 23-08003                                 | TIRE, REAR, 130/80-17 65H, PIRELLI MT-60   | 1                   |
| 14      | <i>Not Applicable to this Bike Model</i> |  |                     |
| 15      | 23-08032                                 | REAR AXLE 20MM HOLLOW, ROUNDED END   | 1                   |
| 16      | 23-07489                                 | WHEEL SPACER DRIVE SIDE REAR   | 1                   |
| 17      | 23-07774                                 | 6204 BEARING DUST SEAL   | 2                   |
| 18      | 20-06138                                 | BEARING 6204<br>NOTE: Bearing used as swing arm bearing in some models and as the wheel bearing (qty of 5; 2 in front and three in rear wheel) in 2015 and later models.<br>NOTE: Manufacturer part number is 6204-2RS | 2                   |
| 19      | 20-06138                                 | BEARING 6204<br>NOTE: Bearing used as swing arm bearing in some models and as the wheel bearing (qty of 5; 2 in front and three in rear wheel) in 2015 and later models.<br>NOTE: Manufacturer part number is 6204-2RS | 2                   |
| 20      | 23-07776                                 | REAR WHEEL BEARING TUBE 15MY   | 1                   |
| 21      | 20-06138                                 | BEARING 6204<br>NOTE: Bearing used as swing arm bearing in some models and as the wheel bearing (qty of 5; 2 in front and three in rear wheel) in 2015 and later models.<br>NOTE: Manufacturer part number is 6204-2RS | 2                   |

|    |          |   |   |
|----|----------|---|---|
| 22 | 25-08080 | ABS MAGNET RING                                     | 1 |
| 23 | 45-07496 | MPI WHEEL SPEED SENSOR                              | 1 |
| 24 | 90-05678 | U-NUT M20X1.5 FLANGE 27S 15H<br>NOTE: Rear Axle Nut | 1 |



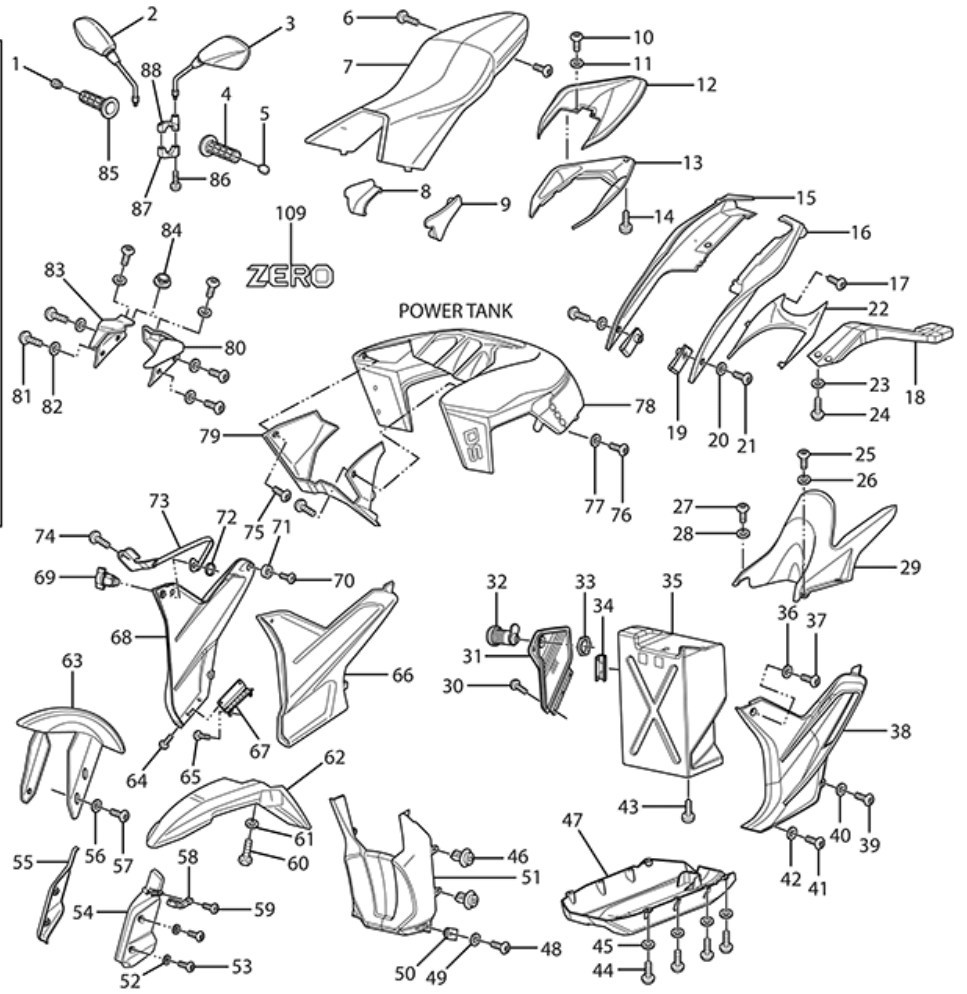
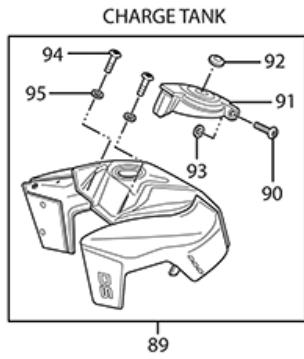
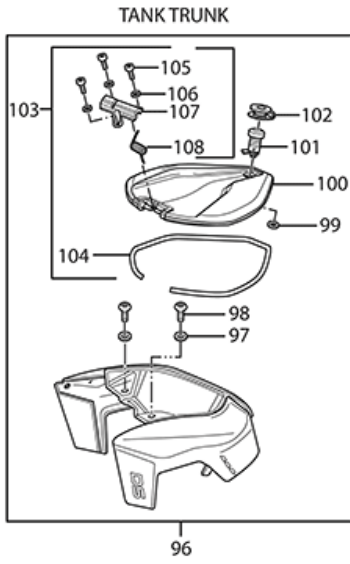




## ZEV0056 - Steering Systems

| Callout | Part Number | Part Name  | Qty. per Motorcycle |
|---------|-------------|--|---------------------|
| 1       | 27-08151    | HIGH RISE HANDLEBAR NO LOGO<br>NOTE: Supersedes part number 27-08050.                                      | 1                   |
| 2       | 90-08112    | HEXAGON SOCKET HEAD CAP SCREW ISO 4762 M8X30-10.9  | 1                   |
| 3       | 22-00687    | S HANDLEBAR CLAMP  | 1                   |
| 4       | 90-08222    | CUSTOM STEERING STEM NUT M27 X 1.5 X 14MM<br>COUNTERBORED FLANGE<br>NOTE: does not require washer 20-06278 | 1                   |
| 5       | 90-02094    | HEXAGON SOCKET HEAD CAP SCREW ISO 4762 M8X25-10.9<br>ZM-F-01 REV 03  | 1                   |
| 6       | 22-07622    | SDS UPPER TRIPLE CLAMP 15MY IMP  | 1                   |
| 7       | 22-06257    | STEERING STEM LOCK NUT M 30 X1.5 MM  | 1                   |
| 8       | 81-08045    | BEARING LIP SEAL OVERMOLDED 55MM OD<br>NOTE: Supersedes part 20-06113                                      | 1                   |
| 9       | 20-06068    | STEERING HEAD BEARING KOYO SAC3055-1   | 1                   |
| 10      | 90-02109    | HEXAGON SOCKET BUTTON HEAD CAP SCREW ISO 7380<br>M5X12-8.8 ZM-F-01   | 1                   |
| 11      | 90-02101    | WASHER ISO 7089 5-200HV ZM-F-01  | 1                   |
| 12      | 20-06068    | STEERING HEAD BEARING KOYO SAC3055-1   | 1                   |
| 13      | 20-05910    | HEADLIGHT BRACKET  | 1                   |
| 14      | 81-08045    | BEARING LIP SEAL OVERMOLDED 55MM OD<br>NOTE: Supersedes part 20-06113                                      | 1                   |
| 15      | 22-08092    | SDS LOWER TRIPLE CLAMP ASSY<br>NOTE: REPLACES 25-08082   | 1                   |
| 16      | 90-02094    | HEXAGON SOCKET HEAD CAP SCREW ISO 4762 M8X25-10.9<br>ZM-F-01 REV 03  | 1                   |
| 17      | 24-08191    | FRONT FENDER DIRT BRAKE LINE HOLE  | 1                   |
| 18      | 90-02107    | WASHER ISO 7093-1 5-200HV ZM-F-01<br>NOTE: Does not apply to S and SR                                      | 1                   |
| 19      | 90-08123    | HEX FLANGE BOLT STAR DRIVE PER ZM 88-08813 M5X12 8.8<br>ZM-F-01 ZM-L-02                                    | 1                   |
| 20      | 22-08053    | DS FORK 41MM LEFT, LONGBRICK   | 1                   |
| 20      | 22-08061    | DS FORK 41MM LEFT  | 1                   |
| 21      | 90-07269    | HEXAGON SOCKET HEAD CAP SCREW ISO 4762 M8X30-10.9<br>ZM-F-01 REV 03 ZM-L-01 REV 01                         | 1                   |
| 22      | 23-07491    | HOLLOW AXLE FRONT  | 1                   |
| 23      | 22-08052    | DS FORK 41MM RIGHT, LONGBRICK  | 1                   |
| 23      | 22-08060    | DS FORK 41MM RIGHT   | 1                   |
| 24      | 12-08037    | SHOWA FORK SEAL KIT<br>NOTE: Kit for one fork  | 1                   |

ZEV0057 - Body Trim



ZEV0057 - Body Trim

| Callout | Part Number | Part Name   | Qty. per Motorcycle |
|---------|-------------|---|---------------------|
| 1       | 27-08002    | HANDLEBAR END CAP   | 1                   |
| 2       | 27-08057    | MIRROR RH   | 1                   |
| 3       | 27-08056    | MIRROR LH   | 1                   |
| 4       | 27-08083    | HAND GRIP NON-THROTTLE SIDE<br>NOTE: Grip does not have Zero logo. Order with 27-08082 if you want a matching pair.<br>NOTE: Supersedes p/n 27-08007. | 1                   |
| 5       | 27-08002    | HANDLEBAR END CAP   | 1                   |
| 6       | 90-08005    | SEAT BOLT M8X55<br>NOTE: Supersedes 90-07009.   | 1                   |
| 7       | 27-08025    | SDS SEAT ASSEMBLY MY15<br>NOTE: replaces 24-04854   | 1                   |
| 8       | 24-08132    | SEAT GAP FILLER RIGHT   | 1                   |
| 9       | 24-08133    | SEAT GAP FILLER LEFT  | 1                   |
| 10      | 90-04716    | HEXAGON SOCKET HEAD CAP SCREW ISO 4762 M4X8-8.8   | 1                   |
| 11      | 90-02102    | WASHER ISO 7089 4-200HV ZM-F-01   | 1                   |
| 12      | 24-08098-17 | Option #1: METALLIC BLACK   | 1                   |
|         | 24-08098-19 | Option #2: SATIN GREEN  | 1                   |
|         | 24-08098-18 | Option #3: PEARLESCENT WHITE  | 1                   |
|         | 24-08098-14 | Option #4: GRAPHITE   | 1                   |
|         | 24-08098-16 | Option #5: SATIN SILVER   | 1                   |
|         | 24-08098-9  | Option #6: RED  | 1                   |
|         | 24-08098-13 | Option #7: BLACK  | 1                   |
|         | 24-08098-12 | Option #8: ORANGE   | 1                   |
|         | 24-08098-11 | Option #9: WHITE  | 1                   |
|         | 24-08098-10 | Option #10: YELLOW  | 1                   |
|         | 24-08098-25 | Option #11: QUICKSAND   | 1                   |
|         | 24-08098-24 | Option #12: JET BLACK   | 1                   |
|         | 24-08098-26 | Option #13: METALLIC CHOCOLATE  | 1                   |
| 13      | 24-08099-19 | Option #1: SATIN GREEN  | 1                   |
|         | 24-08099-14 | Option #2: GRAPHITE   | 1                   |
|         | 24-08099-12 | Option #3: ORANGE   | 1                   |
|         | 24-08099-9  | Option #4: RED  | 1                   |
|         | 24-08099-10 | Option #5: YELLOW   | 1                   |
|         | 24-08099-11 | Option #6: WHITE  | 1                   |
|         | 24-08099-18 | Option #7: PEARLESCENT WHITE  | 1                   |
|         | 24-08099-13 | Option #8: BLACK  | 1                   |
|         | 24-08099-16 | Option #9: SATIN SILVER   | 1                   |
|         | 24-08099-17 | Option #10: METALLIC BLACK  | 1                   |
|         | 24-08099-25 | Option #11: QUICKSAND   | 1                   |
|         | 24-08099-24 | Option #12: JET BLACK   | 1                   |
|         | 24-08099-26 | Option #13: METALLIC CHOCOLATE  | 1                   |

|    |  |  |   |
|----|--|--|---|
| 14 | 90-05885                                 | PHILIPS HEAD SHEET METAL SCREW 6 X 1/2   | 1 |
| 15 | 24-08079                                 | TRUNK PAN RIGHT COMPRESSION ADJUSTER TRIMMED   | 1 |
| 16 | 24-04435                                 | TRUNK PAN LEFT   | 1 |
| 17 | <i>Not Applicable to this Bike Model</i> |  |   |
| 18 | 24-04439                                 | SDS TAIL POD TOP<br>NOTE: Top half only. Order bottom half PN: 24-05158  | 1 |
| 19 | 90-02139                                 | CLIP-ON U-NUT M5X11DP  | 1 |
| 20 | 90-04085                                 | WASHER M5 X 11 X 1 NYLON 6/6 BLACK   | 1 |
| 21 | 90-07124                                 | HEXAGON SOCKET BUTTON HEAD SCREW ISO 7380<br>M5X6-8.8  | 1 |
| 22 | <i>Not Applicable to this Bike Model</i> |  |   |
| 23 | 90-02103                                 | WASHER ISO 7089 6-200HV ZM-F-01  | 1 |
| 24 | 90-07281                                 | HEXAGON SOCKET BUTTON HEAD SCREWS ISO 7380<br>M6X12-8.8 ZM-F-01 REV 03 ZM-L-01 REV 01  | 1 |
| 25 | 90-04084                                 | HEXAGON SOCKET BUTTON HEAD CAP SCREW ISO 7380<br>M5X16-8.8 ZM-F-11 REV 03  | 1 |
| 26 | 90-04085                                 | WASHER M5 X 11 X 1 NYLON 6/6 BLACK   | 1 |
| 27 | 90-04084                                 | HEXAGON SOCKET BUTTON HEAD CAP SCREW ISO 7380<br>M5X16-8.8 ZM-F-11 REV 03  | 1 |
| 28 | 90-04085                                 | WASHER M5 X 11 X 1 NYLON 6/6 BLACK   | 1 |
| 29 | 24-08251                                 | TRIMMED REAR INNER FENDER  | 1 |
| 30 | 90-07125                                 | HEXAGON SOCKET BUTTON HEAD SCREW ISO 7380 M5X10  | 1 |
| 31 | 12-08065                                 | SDS LONGBRICK STORAGE DOOR REPLACEMENT KIT   | 1 |
| 32 | 12-08071                                 | KEYED PANEL LATCH 90 DEG TURN REPLACEMENT KIT  | 1 |
| 33 | 90-08058                                 | LATCH CYLINDER NUT   | 1 |
| 34 | 26-08173                                 | LONG BRICK STORAGE BOX STRIKER PLATE   | 1 |
| 35 | 24-08237                                 | SINGLE LONGBRICK STORAGE CONTAINER WITH STRIKE<br>PLATE  | 1 |
| 36 | 90-04085                                 | WASHER M5 X 11 X 1 NYLON 6/6 BLACK   | 1 |
| 37 | 90-04084                                 | HEXAGON SOCKET BUTTON HEAD CAP SCREW ISO 7380<br>M5X16-8.8 ZM-F-11 REV 03  | 1 |
| 38 | 24-06684                                 | SDS CHIN FAIRING LEFT<br>NOTE: Please order 80-08012 DECAL/GRAPHIC/MEDALLION<br>GRAPHIC, CRAFTED IN CALIFORNIA JEWEL separately. | 1 |
| 39 | 90-04084                                 | HEXAGON SOCKET BUTTON HEAD CAP SCREW ISO 7380<br>M5X16-8.8 ZM-F-11 REV 03  | 1 |
| 40 | 90-04085                                 | WASHER M5 X 11 X 1 NYLON 6/6 BLACK   | 1 |
| 41 | 90-04084                                 | HEXAGON SOCKET BUTTON HEAD CAP SCREW ISO 7380<br>M5X16-8.8 ZM-F-11 REV 03  | 1 |
| 42 | 90-04085                                 | WASHER M5 X 11 X 1 NYLON 6/6 BLACK   | 1 |
| 43 | 90-07130                                 | HEXAGON SOCKET HEAD CAP SCREW ISO 4762 M4X10-8.8<br>ZM-F-01 REV 03 ZM-L-01 REV 01  | 1 |
| 44 | 90-04084                                 | HEXAGON SOCKET BUTTON HEAD CAP SCREW ISO 7380<br>M5X16-8.8 ZM-F-11 REV 03  | 1 |
| 45 | 90-04085                                 | WASHER M5 X 11 X 1 NYLON 6/6 BLACK   | 1 |

|    |             |  |   |
|----|-------------|--|---|
| 46 | 90-08055    | RIVET/TREE FASTENER 5MM OD PUSH SCREW TYPE   | 1 |
| 47 | 26-08051    | SKID PLATE DS<br>NOTE: Aluminum (5052-H32) skid plate used on Zero DS, Zero DSR and other SDS motorcycles in the authority configuration. Also used with the consumer drop bars, it is compatible with the Zero S and Zero SR.<br>NOTE: Supersedes part number 20-05126. | 1 |
| 48 | 90-04084    | HEXAGON SOCKET BUTTON HEAD CAP SCREW ISO 7380<br>M5X16-8.8 ZM-F-11 REV 03  | 1 |
| 49 | 90-04085    | WASHER M5 X 11 X 1 NYLON 6/6 BLACK   | 1 |
| 50 | 90-02140    | CLIP-ON U-NUT M5X15.8DP  | 1 |
| 51 | 24-07674    | SDS STUBBY CHIN CENTER   | 1 |
| 52 | 90-04085    | WASHER M5 X 11 X 1 NYLON 6/6 BLACK   | 1 |
| 53 | 90-04084    | HEXAGON SOCKET BUTTON HEAD CAP SCREW ISO 7380<br>M5X16-8.8 ZM-F-11 REV 03  | 1 |
| 54 | 24-08070    | FORK GUARD LEFT  | 1 |
| 55 | 24-08069    | FORK GUARD RIGHT   | 1 |
| 56 | 90-04085    | WASHER M5 X 11 X 1 NYLON 6/6 BLACK   | 1 |
| 57 | 90-07292    | HEXAGON SOCKET BUTTON HEAD CAP SCREW ISO 7380<br>M5X16-8.8 ZM-F-11 REV 01 ZM-L-01 REV 01<br>NOTE: Does not apply to DS   | 1 |
| 58 | 24-08071    | FORK GUARD CLAMP   | 1 |
| 59 | 90-05886    | PHILIPS HEAD SHEET METAL SCREW TYPE AB NO 8 X 1/2<br>STEEL ZM-F-11   | 1 |
| 60 | 90-08123    | HEX FLANGE BOLT STAR DRIVE PER ZM 88-08813 M5X12 8.8<br>ZM-F-01 ZM-L-02  | 1 |
| 61 | 90-02107    | WASHER ISO 7093-1 5-200HV ZM-F-01<br>NOTE: Does not apply to S and SR  | 1 |
| 62 | 24-08191    | FRONT FENDER DIRT BRAKE LINE HOLE  | 1 |
| 63 | 24-08093-10 | Option #1: YELLOW  | 1 |
|    | 24-08093-11 | Option #2: WHITE   | 1 |
|    | 24-08093-13 | Option #3: BLACK   | 1 |
|    | 24-08093-9  | Option #4: RED   | 1 |
| 64 | 90-04083    | HEXAGON SOCKET BUTTON HEAD CAP SCREW ISO 7380<br>M5X6-8.8 ZM-F-11 REV 03   | 1 |
| 65 | 90-04084    | HEXAGON SOCKET BUTTON HEAD CAP SCREW ISO 7380<br>M5X16-8.8 ZM-F-11 REV 03  | 1 |
| 66 | 24-08235    | SDS CHIN FAIRING RIGHT<br>NOTE: Please order 80-08012 DECAL/GRAPHIC/MEDALLION GRAPHIC, CRAFTED IN CALIFORNIA JEWEL separately.   | 1 |
| 67 | 26-08165    | LONGBRICK STORAGE FAIRING HINGE ASSEMBLY   | 1 |
| 68 | 24-08223    | REWORKED CHIN FAIRING RIGHT, CAM LOCK<br>NOTE: NOTE: for Zero S/DS ZF6.5 and ZF7.2   | 1 |
| 69 | 27-08064    | CAM LOCK WING STYLE KIT  | 1 |
| 70 | 90-08095    | PHILIPS HEAD SHEET METAL SCREW TYPE AB NO 10 X 3/4"<br>STEEL   | 1 |

|    |             |  |   |
|----|-------------|--|---|
| 71 | 24-08238    | RECESSED WASHER RUBBER BUMPER 3/4" OD 9/16" TALL<br>3/16" COUNTERBORE  | 1 |
| 72 | 90-08058    | LATCH CYLINDER NUT   | 1 |
| 73 | 26-08183    | LONGBRICK STORAGE FAIRING TETHER ASSEMBLY  | 1 |
| 74 | 90-08103    | HEXAGON SOCKET THIN HEAD CAP SCREW DIN 7984<br>M5X20-8.8   | 1 |
| 75 | 90-05887    | PHILIPS HEAD SHEET METAL SCREW TYPE AB NO 10 X 1/2<br>STEEL ZM-F-11  | 1 |
| 76 | 90-04084    | HEXAGON SOCKET BUTTON HEAD CAP SCREW ISO 7380<br>M5X16-8.8 ZM-F-11 REV 03  | 1 |
| 77 | 90-04085    | WASHER M5 X 11 X 1 NYLON 6/6 BLACK   | 1 |
| 78 | 24-08109-19 | Option #1: SATIN GREEN   | 1 |
|    | 24-08109-11 | Option #2: WHITE   | 1 |
|    | 24-08109-12 | Option #3: ORANGE  | 1 |
|    | 24-08109-14 | Option #4: GRAPHITE  | 1 |
|    | 24-08109-13 | Option #5: BLACK   | 1 |
|    | 24-08109-17 | Option #6: METALLIC BLACK  | 1 |
| 79 | 24-04428    | SDS FAIRING FRONT CENTER BLACK#2   | 1 |
| 80 | 24-08092    | HEADLIGHT MOUNT LEFT FOR ABS   | 1 |
| 81 | 90-04084    | HEXAGON SOCKET BUTTON HEAD CAP SCREW ISO 7380<br>M5X16-8.8 ZM-F-11 REV 03  | 1 |
| 82 | 90-04085    | WASHER M5 X 11 X 1 NYLON 6/6 BLACK   | 1 |
| 83 | 24-08091    | HEADLIGHT MOUNT RIGHT FOR ABS  | 1 |
| 84 | 27-08034    | 12V ACCESSORY COVER, SMALL   | 1 |
| 85 | 27-08082    | HAND GRIP THROTTLE SIDE<br>NOTE: Grip does not have Zero logo. Order with 27-08083 if you<br>want a matching pair.<br>NOTE: Supersedes p/n 27-08006. | 1 |
| 86 | 90-07265    | HEXAGON SOCKET HEAD CAP SCREW ISO 4762 M6X20-8.8<br>ZM-F-01 REV 03 ZM-L-01 REV 01  | 1 |
| 87 | 24-02961    | MIRROR MOUNT CLAMP   | 1 |
| 88 | 26-08060    | MIRROR LH MOUNT LOW PROFILE<br>NOTE: Bottom part of the mirror mount LH  | 1 |
| 89 | 24-08298-17 | Option #1: METALLIC BLACK  | 1 |
|    | 24-08298-14 | Option #2: GRAPHITE  | 1 |
|    | 24-08298-13 | Option #3: BLACK   | 1 |
|    | 24-08298-12 | Option #4: ORANGE  | 1 |
|    | 24-08298-11 | Option #5: WHITE   | 1 |
|    | 24-08298-19 | Option #6: SATIN GREEN   | 1 |
|    | 24-08298-25 | Option #7: QUICKSAND   | 1 |
| 90 | 90-08048    | LATCH BOLT CYLINDER  | 1 |
| 91 | 24-08156    | J1772 INLET COVER WITH BADGE ASSEMBLY  | 1 |
| 92 | PA-339      | J1772 INLET COVER BADGE  | 1 |
| 93 | 90-08083    | LATCH BOLT SECURITY SCREW  | 1 |
|    |             | HEXAGON SOCKET BUTTON HEAD CAP SCREW ISO 7380<br>M5X16-8.8 ZM-F-11 REV 01 ZM-L-01 REV 01   |   |



|     |             |  |   |
|-----|-------------|--|---|
| 94  | 90-07292    | NOTE: Does not apply to DS   | 1 |
| 95  | 90-04085    | WASHER M5 X 11 X 1 NYLON 6/6 BLACK   | 1 |
| 96  | 24-08283-17 | Option #1: METALLIC BLACK<br>NOTE: Part is full assembly branded w/ Tank trunk lid, hinge and lock w/ key<br>NOTE: comes w/ call out#'s 99-108   | 1 |
|     | 24-08283-11 | Option #2: WHITE<br>NOTE: Part is full assembly branded w/ Tank trunk lid, hinge and lock w/ key<br>NOTE: comes w/ call out#'s 99-108  | 1 |
|     | 24-08283-12 | Option #3: ORANGE<br>NOTE: Part is full assembly branded w/ Tank trunk lid, hinge and lock w/ key<br>NOTE: comes w/ call out#'s 99-108   | 1 |
|     | 24-08283-13 | Option #4: BLACK<br>NOTE: Part is full assembly branded w/ Tank trunk lid, hinge and lock w/ key<br>NOTE: comes w/ call out#'s 99-108  | 1 |
|     | 24-08283-14 | Option #5: GRAPHITE<br>NOTE: Part is full assembly branded w/ Tank trunk lid, hinge and lock w/ key<br>NOTE: comes w/ call out#'s 99-108   | 1 |
|     | 24-08283-19 | Option #6: SATIN GREEN<br>NOTE: Part is full assembly branded w/ Tank trunk lid, hinge and lock w/ key<br>NOTE: comes w/ call out#'s 99-108  | 1 |
|     | 24-08283-25 | Option #7: QUICKSAND<br>NOTE: Part is full assembly branded w/ Tank trunk lid, hinge and lock w/ key<br>NOTE: comes w/ call out#'s 99-108  | 1 |
| 97  | 90-04085    | WASHER M5 X 11 X 1 NYLON 6/6 BLACK   | 1 |
| 98  | 90-04084    | HEXAGON SOCKET BUTTON HEAD CAP SCREW ISO 7380<br>M5X16-8.8 ZM-F-11 REV 03  | 1 |
| 99  | 90-08058    | LATCH CYLINDER NUT   | 1 |
| 100 | 24-08192    | TANK TRUNK LID<br>NOTE: Tank Trunk Lid Only. Please order the complete service kit 12-08072 if all parts are needed. Kit is not backward compatible with earlier model years.<br>NOTE: For older model years, please order the entire replacement tank assembly with tank trunk. | 1 |
| 101 | 12-08071    | KEYED PANEL LATCH 90 DEG TURN REPLACEMENT KIT  | 1 |
| 102 | 81-08062    | 90 DEG TURN KEYLATCH CAP   | 1 |
| 103 | 12-08072    | TANK TRUNK LID REPLACEMENT KIT<br>NOTE: Kit includes TANK TRUNK LID (24-08192).  | 1 |

Part Detail for #103. TANK TRUNK LID REPLACEMENT KIT

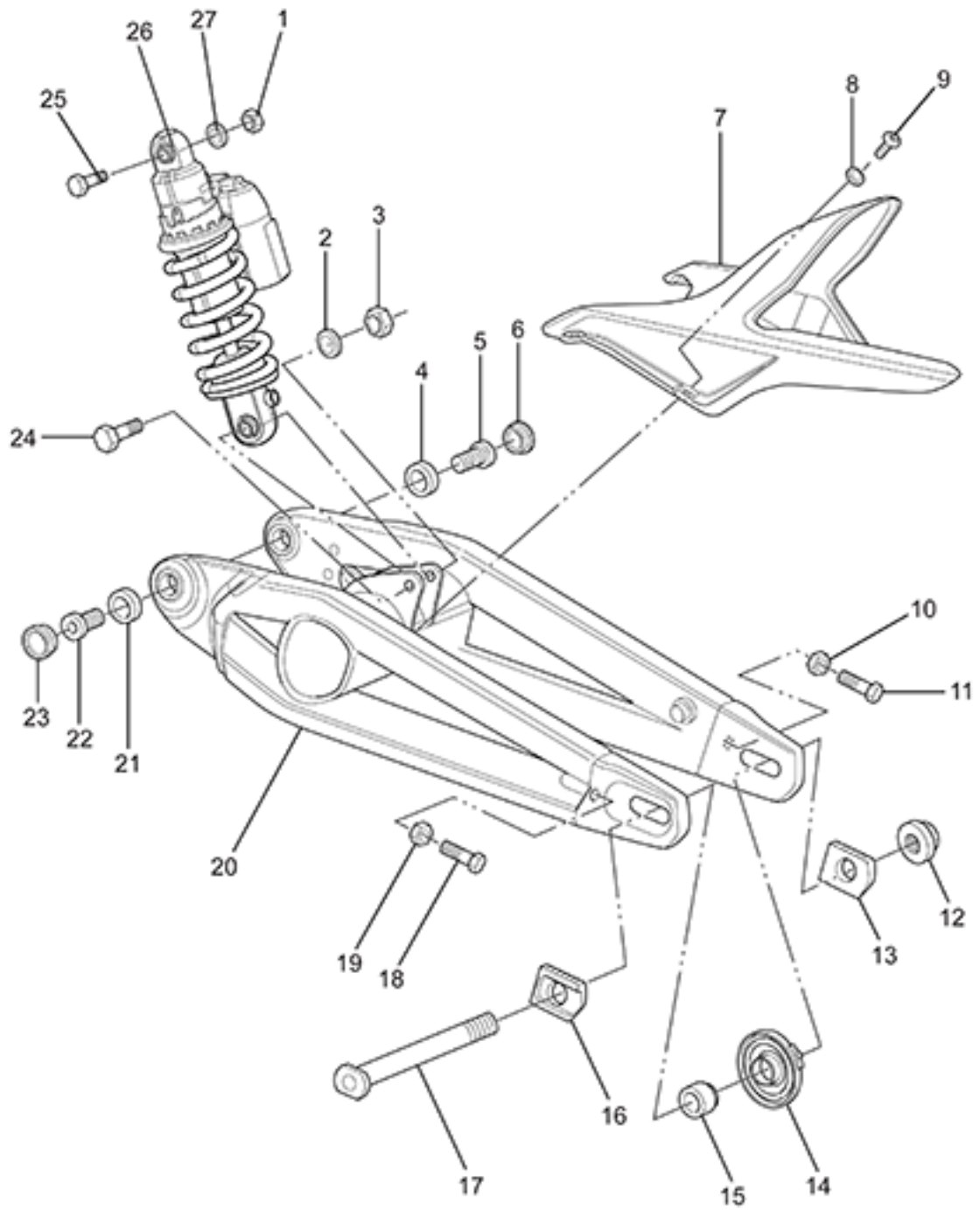
| Callout | Part Number | Part Name | Qty. per Motorcycle |
|---------|-------------|-----------|---------------------|
|---------|-------------|-----------|---------------------|

|     |          |  |   |
|-----|----------|--|---|
| 104 | 24-08214 | ASYMMETRIC U-CHANNEL FOAM SEAL 3/16" WIDE                          | 1 |
| 105 | 90-08009 | HEXAGON SOCKET HEAD CAP SCREW ISO 4762 M3X8-8.8<br>ZM-F-01 ZM-L-02 | 1 |
| 106 | 90-02480 | WASHER ISO 7089 3-200HV ZM-F-01                                    | 1 |
| 107 | 24-08220 | TANK TRUNK HINGE CAP   | 1 |
| 108 | 90-08077 | TORSION SPRING FOR LID   | 1 |

|     |            |   |   |
|-----|------------|---|---|
| 109 | 80-06734-1 | ZERO TANK BRAND GLOSS PEWTER 14MY IMPL - TANK<br>EMBLEM | 1 |
| 109 | 80-08049   | DS MODEL DESIGNATOR - EMBLEM                            | 1 |
| 109 | 80-08049   | DS MODEL DESIGNATOR - EMBLEM                            | 1 |



ZEV0058 - Rear Suspension



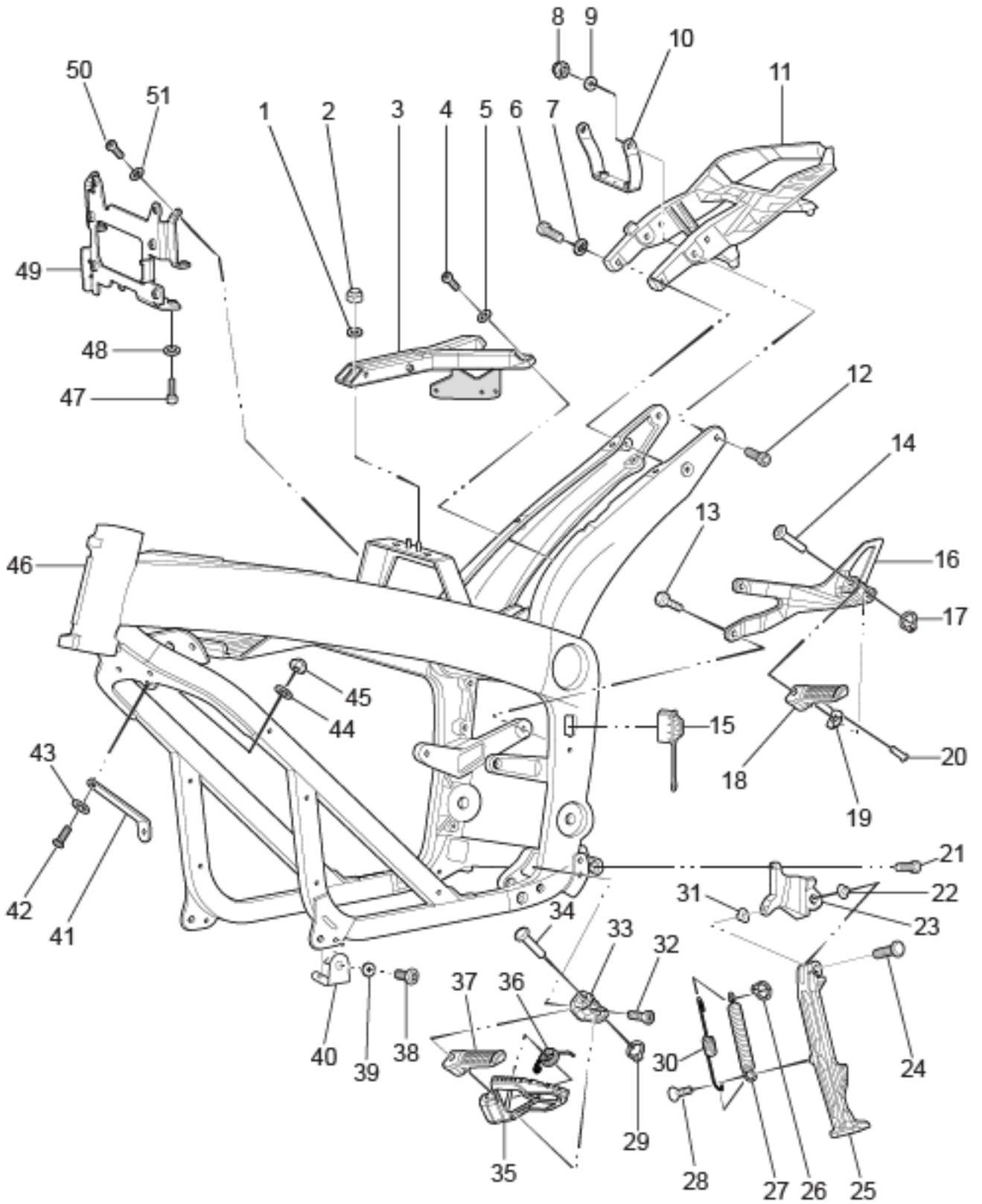
ZEV0058 - Rear Suspension

| Callout | Part Number | Part Name  | Qty. per Motorcycle |
|---------|-------------|--|---------------------|
| 1       | 90-02050    | PREVAILING TORQUE TYPE NUT DIN 985 M10-08 ZM-F-01  | 1                   |
| 2       | 90-02100    | WASHER ISO 7089 10-200 HV ZM-F-01  | 1                   |
| 3       | 90-02050    | PREVAILING TORQUE TYPE NUT DIN 985 M10-08 ZM-F-01  | 1                   |
| 4       | 20-06138    | BEARING 6204<br>NOTE: Bearing used as swing arm bearing in some models and as the wheel bearing (qty of 5; 2 in front and three in rear wheel) in 2015 and later models.<br>NOTE: Manufacturer part number is 6204-2RS | 2                   |
| 5       | 20-06130    | STUB AXLE  | 1                   |
| 6       | 20-06937    | SDS STUB-PIVOT COVER   | 1                   |
| 7       | 24-08251    | TRIMMED REAR INNER FENDER  | 1                   |
| 8       | 90-04085    | WASHER M5 X 11 X 1 NYLON 6/6 BLACK   | 1                   |
| 9       | 90-04084    | HEXAGON SOCKET BUTTON HEAD CAP SCREW ISO 7380 M5X16-8.8 ZM-F-11 REV 03   | 1                   |
| 10      | 90-05088    | HEXAGON FLANGE NUT DIN 6923 M8-1.25 ZM-F-01 REV 03<br>NOTE: Axle adjusters jam nut   | 1                   |
| 11      | 90-03030    | HEXAGON HEAD SCREW DIN 933 M8X40-10.9 ZM-F-01 REV 03   | 1                   |
| 12      | 90-05678    | U-NUT M20X1.5 FLANGE 27S 15H<br>NOTE: Rear Axle Nut  | 1                   |
| 13      | 26-08123    | REAR AXLE ADJUSTER PUSH BLOCK NUT SIDE   | 1                   |
| 14      | 45-07496    | MPI WHEEL SPEED SENSOR   | 1                   |
| 15      | 23-07489    | WHEEL SPACER DRIVE SIDE REAR   | 1                   |
| 16      | 26-08124    | REAR AXLE ADJUSTER PUSH BLOCK HEAD SIDE  | 1                   |
| 17      | 23-08032    | REAR AXLE 20MM HOLLOW, ROUNDED END   | 1                   |
| 18      | 90-03030    | HEXAGON HEAD SCREW DIN 933 M8X40-10.9 ZM-F-01 REV 03   | 1                   |
| 19      | 90-05088    | HEXAGON FLANGE NUT DIN 6923 M8-1.25 ZM-F-01 REV 03<br>NOTE: Axle adjusters jam nut   | 1                   |
| 20      | 26-08069    | S SWINGARM EXTENDED REAR AXLE SLOT   | 1                   |
| 21      | 20-06138    | BEARING 6204<br>NOTE: Bearing used as swing arm bearing in some models and as the wheel bearing (qty of 5; 2 in front and three in rear wheel) in 2015 and later models.<br>NOTE: Manufacturer part number is 6204-2RS | 2                   |
| 22      | 20-06130    | STUB AXLE  | 1                   |
| 23      | 20-06937    | SDS STUB-PIVOT COVER   | 1                   |
| 24      | 90-05711    | LOWER SHOCK EYE BOLT M10-1.5X60MM  | 1                   |
| 25      | 90-05711    | LOWER SHOCK EYE BOLT M10-1.5X60MM  | 1                   |
| 26      | 22-05882    | DS SHOCK 40MM  | 1                   |

|    |          |                                   |   |
|----|----------|-----------------------------------|---|
| 26 | 22-08054 | DS SHOCK 40MM, LONGBRICK          | 1 |
| 27 | 90-02100 | WASHER ISO 7089 10-200 HV ZM-F-01 | 1 |



ZEV0059 - Frame(Left)





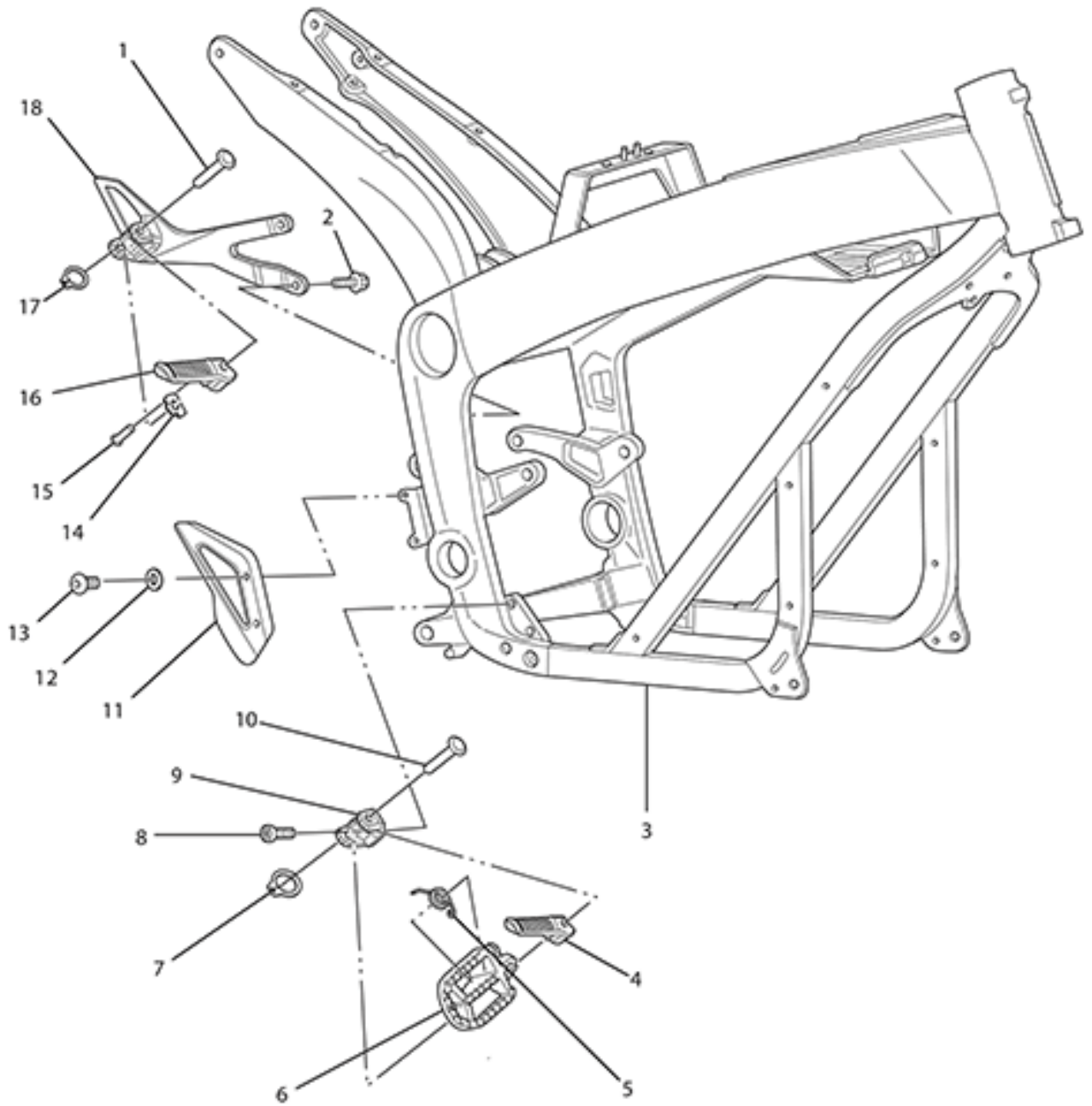
## ZEV0059 - Frame(Left)

| Callout | Part Number | Part Name   | Qty. per Motorcycle |
|---------|-------------|---|---------------------|
| 1       | 90-02103    | WASHER ISO 7089 6-200HV ZM-F-01   | 1                   |
| 2       | 90-02054    | PREVAILING TORQUE TYPE NUT DIN 985 M6-08 ZM-F-01  | 1                   |
| 3       | 21-06979    | SDS SEAT FRAME WITH FUSEPANEL MOUNT   | 1                   |
| 4       | 90-07265    | HEXAGON SOCKET HEAD CAP SCREW ISO 4762 M6X20-8.8<br>ZM-F-01 REV 03 ZM-L-01 REV 01           | 1                   |
| 5       | 90-02103    | WASHER ISO 7089 6-200HV ZM-F-01   | 1                   |
| 6       | 90-08112    | HEXAGON SOCKET HEAD CAP SCREW ISO 4762 M8X30-10.9   | 1                   |
| 7       | 90-02104    | WASHER ISO 7089 -8-200 HV ZM-F-01   | 1                   |
| 8       |             | <i>Not Applicable to this Bike Model</i>  |                     |
| 9       |             | <i>Not Applicable to this Bike Model</i>  |                     |
| 10      |             | <i>Not Applicable to this Bike Model</i>  |                     |
| 11      | 20-04876    | SDS TAIL FRAME  | 1                   |
| 12      | 90-08005    | SEAT BOLT M8X55<br>NOTE: Supersedes 90-07009.   | 1                   |
| 13      | 90-07284    | HEX FLANGE BOLT M8X25   | 1                   |
| 14      | 90-02725    | CLEVIS PIN CUSTOM 10MM X 45L  | 1                   |
| 15      | 45-04864    | AC CHARGE INLET COVER   | 1                   |
| 16      | 20-04285    | SDS PASSENGER PEG BRKT L  | 1                   |
| 17      | 90-02879    | RETAINING RING 9MM SHAFT DIN 471  | 1                   |
| 18      | 27-08039    | PASSENGER FOOTPEG LEFT SIDE   | 1                   |
| 19      | 20-04279    | FOOTPEG DETENT PLATE  | 1                   |
| 20      | 20-05404    | FOOTPEG DETENT BALL MECHANISM   | 1                   |
| 21      | 90-07277    | HEXAGON SOCKET THIN HEAD CAP SCREW DIN 7984<br>M10X25-8.8 ZM-F-01 REV 03 ZM-L-01 REV 01     | 1                   |
| 22      | 90-02800    | BUSHING FLANGE 0.375  | 1                   |
| 23      | 20-06590    | KICKSTAND MOUNT   | 1                   |
| 24      | 90-02799    | CLEVIS PIN CUSTOM<br>NOTE: Used to attach kickstand leg to mount.                           | 1                   |
| 25      | 20-05661    | MEDIUM KICKSTAND LEG W/MAGNET   | 1                   |
| 26      | 90-02837    | E CLIP 0.375  | 1                   |
| 27      | 90-08219    | SIDESTAND SPRING OUTER STAINLESS PASSIVATED   | 1                   |
| 28      | 90-07261    | HEXAGON SOCKET COUNTERSUNK HEAD SCREW ISO<br>10642 M8X20-10.9 ZM-F-01 REV 03 ZM-L-01 REV 01 | 1                   |
| 29      | 90-02879    | RETAINING RING 9MM SHAFT DIN 471  | 1                   |
| 30      | 20-00709    | S KS SPRING IN  | 1                   |
| 31      | 90-02800    | BUSHING FLANGE 0.375  | 1                   |
| 32      | 90-07277    | HEXAGON SOCKET THIN HEAD CAP SCREW DIN 7984<br>M10X25-8.8 ZM-F-01 REV 03 ZM-L-01 REV 01     | 1                   |
| 33      | 20-02723    | CLEVIS FOOT PEG UNIVERSAL LEFT  | 1                   |
| 34      | 90-02725    | CLEVIS PIN CUSTOM 10MM X 45L  | 1                   |

|    |  |   |   |
|----|--|---|---|
| 35 | 20-02548                                 | FOOTPEG, LEFT   | 1 |
| 36 | 20-02727                                 | TORSION SPRING, .678 OD .078 WIRE, CCW  | 1 |
| 37 | <i>Not Applicable to this Bike Model</i> |   |   |
| 38 | 90-02109                                 | HEXAGON SOCKET BUTTON HEAD CAP SCREW ISO 7380<br>M5X12-8.8 ZM-F-01                | 1 |
| 39 | 90-02101                                 | WASHER ISO 7089 5-200HV ZM-F-01   | 1 |
| 40 | 20-05307                                 | SKID PAN BRACKET  | 1 |
| 41 | 20-07073                                 | SDS FRAME MOUNTED HORN BRACKET  | 1 |
| 42 | 90-07435                                 | HEX SOCKET BUTTON HEAD CAP SCREW M6X20-8.8  | 1 |
| 43 | 90-02103                                 | WASHER ISO 7089 6-200HV ZM-F-01   | 1 |
| 44 | 90-02103                                 | WASHER ISO 7089 6-200HV ZM-F-01   | 1 |
| 45 | 90-02054                                 | PREVAILING TORQUE TYPE NUT DIN 985 M6-08 ZM-F-01                                  | 1 |
| 46 | 26-08127                                 | S MAIN FRAME<br>NOTE: Also for DS Main frame                                      | 1 |
| 47 | 90-07288                                 | HEXAGON SOCKET HEAD CAP SCREW ISO 4762 M5X12-8.8<br>ZM-F-01 REV 03 ZM-L-01 REV 01 | 1 |
| 48 | 90-02101                                 | WASHER ISO 7089 5-200HV ZM-F-01   | 1 |
| 49 | 26-08120                                 | S ELECTRICAL PANEL  | 1 |
| 50 | 90-07288                                 | HEXAGON SOCKET HEAD CAP SCREW ISO 4762 M5X12-8.8<br>ZM-F-01 REV 03 ZM-L-01 REV 01 | 1 |
| 51 | 90-02101                                 | WASHER ISO 7089 5-200HV ZM-F-01   | 1 |

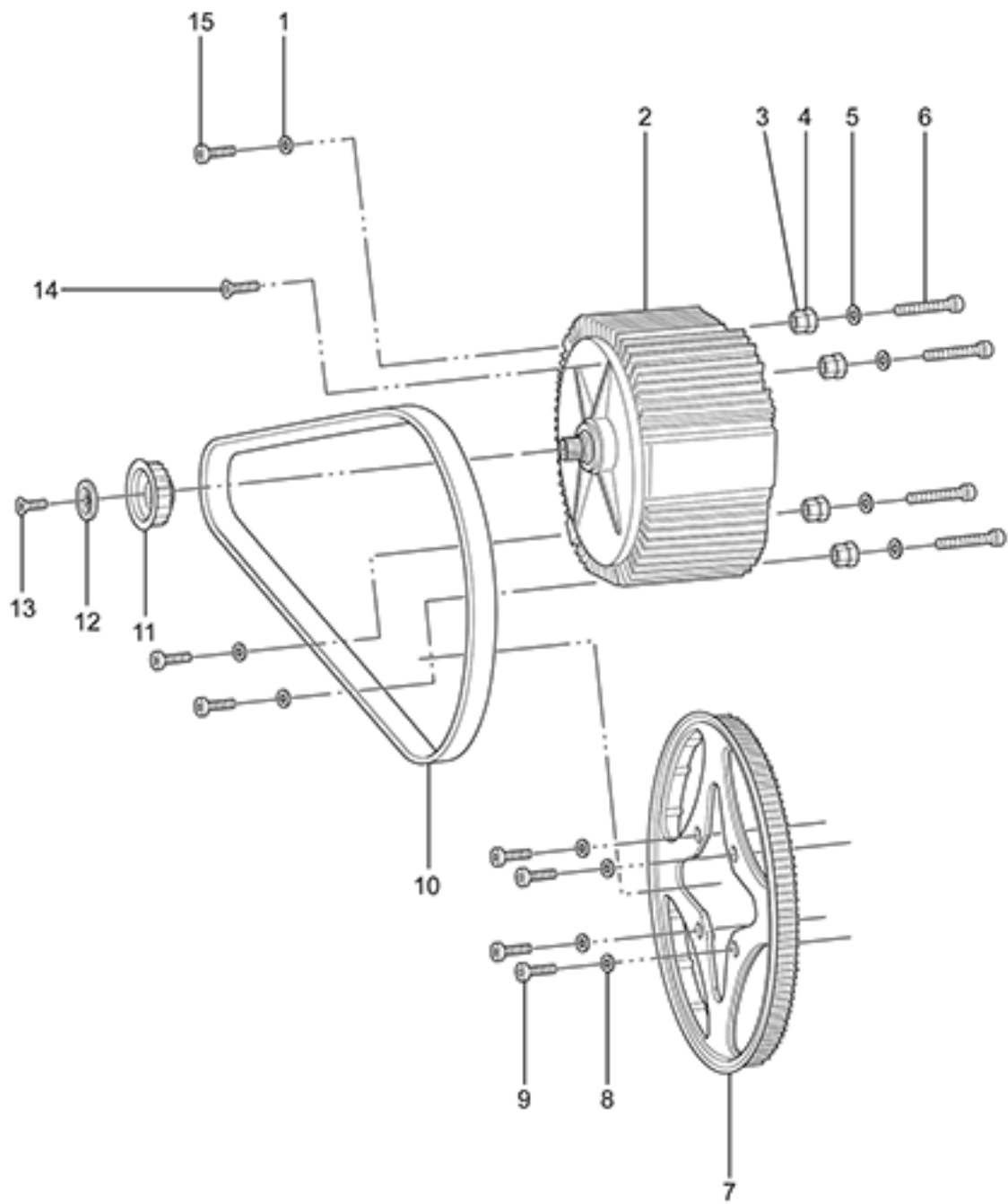


ZEV0060 - Frame(Right)



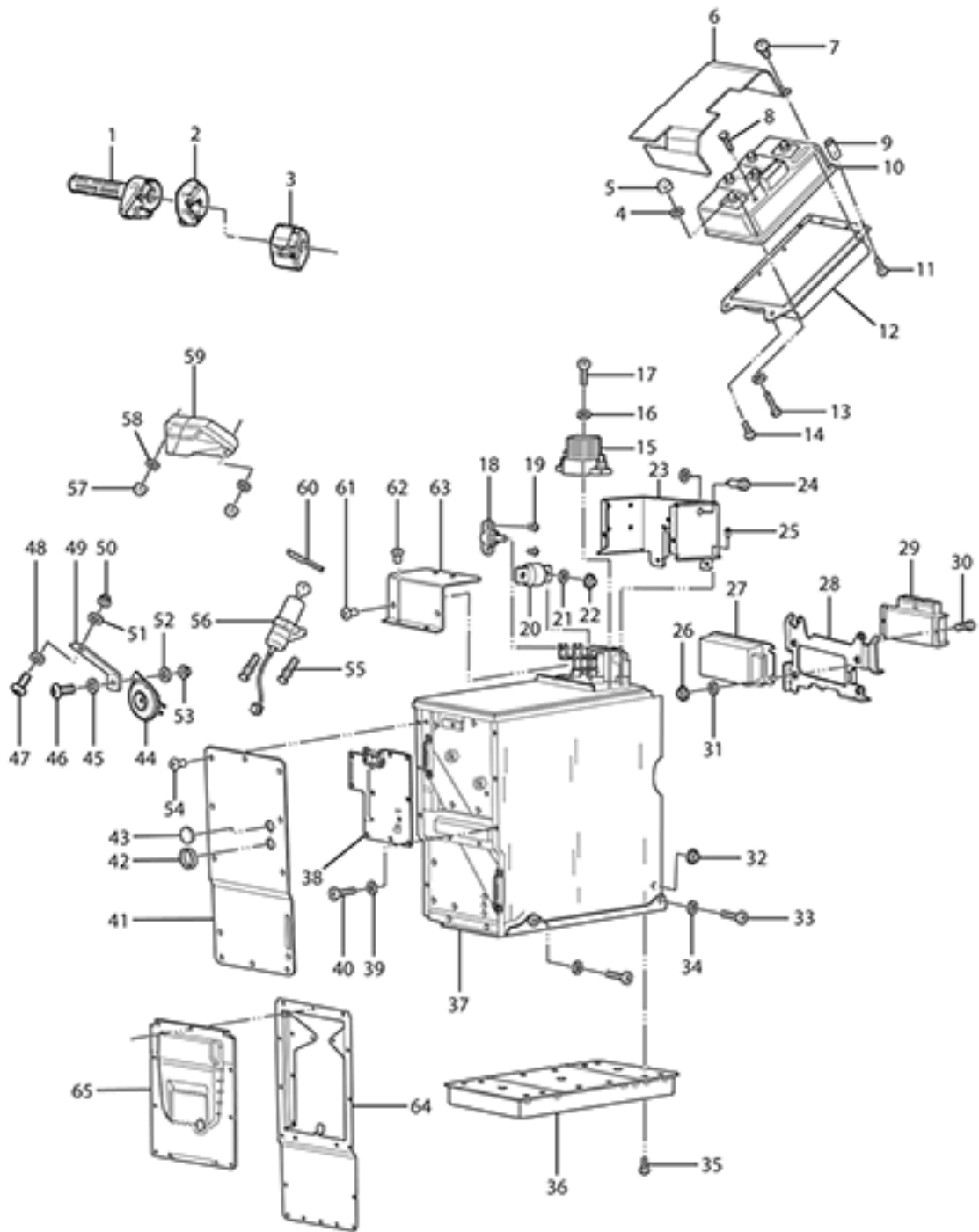
ZEV0060 - Frame(Right)

| Callout | Part Number | Part Name  | Qty. per Motorcycle |
|---------|-------------|--|---------------------|
| 1       | 90-02725    | CLEVIS PIN CUSTOM 10MM X 45L   | 1                   |
| 2       | 90-07284    | HEX FLANGE BOLT M8X25  | 1                   |
| 3       | 26-08127    | S MAIN FRAME<br>NOTE: Also for DS Main frame   | 1                   |
| 4       | 20-02548    | FOOTPEG, LEFT  | 0                   |
| 5       | 20-02727    | TORSION SPRING, .678 OD .078 WIRE, CCW   | 1                   |
| 6       | 20-02549    | FOOTPEG, RIGHT<br>NOTE: Does not apply to S and SR                                       | 1                   |
| 7       | 90-02879    | RETAINING RING 9MM SHAFT DIN 471   | 1                   |
| 8       | 90-07277    | HEXAGON SOCKET THIN HEAD CAP SCREW DIN 7984<br>M10X25-8.8 ZM-F-01 REV 03 ZM-L-01 REV 01  | 1                   |
| 9       | 20-02724    | CLEVIS FOOT PEG UNIVERSAL RIGHT  | 1                   |
| 10      | 90-02725    | CLEVIS PIN CUSTOM 10MM X 45L   | 1                   |
| 11      | 25-07457    | MASTER CYLINDER GUARD FOR J-JUAN MASTER<br>CYLINDER                                      | 1                   |
| 12      | 90-02103    | WASHER ISO 7089 6-200HV ZM-F-01  | 1                   |
| 13      | 90-07323    | HEXAGON SOCKET BUTTON HEAD CAP SCREW ISO 7380<br>M6X25-8.8 ZM-F-01 REV 03 ZM-L-01 REV 01 | 1                   |
| 14      | 20-04279    | FOOTPEG DETENT PLATE   | 1                   |
| 15      | 20-05404    | FOOTPEG DETENT BALL MECHANISM  | 1                   |
| 16      | 27-08038    | PASSENGER FOOTPEG RIGHT SIDE   | 1                   |
| 17      | 90-02879    | RETAINING RING 9MM SHAFT DIN 471   | 1                   |
| 18      | 20-07604    | SDS AND FX PASSENGER PEG BRKT R  | 1                   |



ZEV0061 - Motor and Drive System

| Callout | Part Number | Part Name  | Qty. per Motorcycle |
|---------|-------------|--|---------------------|
| 1       | 90-02104    | WASHER ISO 7089 -8-200 HV ZM-F-01  | 1                   |
| 2       | 30-08099    | ZF75-7 IPM MOTOR SPLINED SHAFT<br>NOTE: Motor used in 2016 through 2019 S/DS ZF13.0 & ZF14.4                   | 1                   |
| 2       | 30-08107    | ZF75-5 S IPM MOTOR SPLINED SHAFT<br>NOTE: Motor used in 2016 through 2019 S/DS ZF6.5 & ZF7.2                   | 1                   |
| 3       | 90-04783    | HEXAGON NUT ISO 4033 M14-2 ZM-F-01 REV 03  | 4                   |
| 4       | 20-04774    | MOTOR JACK SCREW INNER   | 4                   |
| 5       | 90-02104    | WASHER ISO 7089 -8-200 HV ZM-F-01  | 4                   |
| 6       | 90-05179    | HEXAGON SOCKET HEAD CAP SCREW ISO 4762 M8X60-8.8<br>ZM-F-01 REV 03   | 1                   |
| 7       | 30-08109    | WHEEL SPROCKET 90T 11MM PITCH 17MM WIDE BELT<br>COATED   | 1                   |
| 8       | 90-02104    | WASHER ISO 7089 -8-200 HV ZM-F-01  | 4                   |
| 9       | 90-08053    | HEXALOBULAR SOCKET PAN HEAD ISO 14583 M8X30-10.9<br>ZM-F-01 ZM-L-02  | 4                   |
| 10      | 30-08278    | BELT 158T 11MM PITCH 17MM WIDE THIN WEB<br>NOTE: Supersedes 30-08086   | 1                   |
| 11      | 30-08116    | MOTOR SPROCKET 20T 11MM PITCH 17MM WIDE BELT<br>ASSEMBLED  | 1                   |
| 11      | 30-08117    | MOTOR SPROCKET 18T 11MM PITCH 17MM WIDE BELT<br>ASSEMBLED  | 1                   |
| 12      | 20-05453    | LOW PROFILE BELT SPROCKET MOTOR SHAFT TOPHAT   | 1                   |
| 13      | 90-08108    | HEXALOBULAR SOCKET COUNTERSUNK HEAD SCREW ISO<br>14581 M10X25-10.9 ZM-F-01 REV 03<br>NOTE: Motor sprocket bolt | 1                   |
| 14      | 90-08037    | HEXALOBULAR (6 LOBE) SOCKET FLAT HEAD<br>COUNTERSUNK SCREW ISO 14582 M8X30-10.9 ZM-F-01 REV<br>04              | 1                   |
| 15      | 90-02096    | MOTOR MOUNTING LEFT FRONT TOP AND LEFT FRONT<br>BOTTOM BOLT  | 3                   |

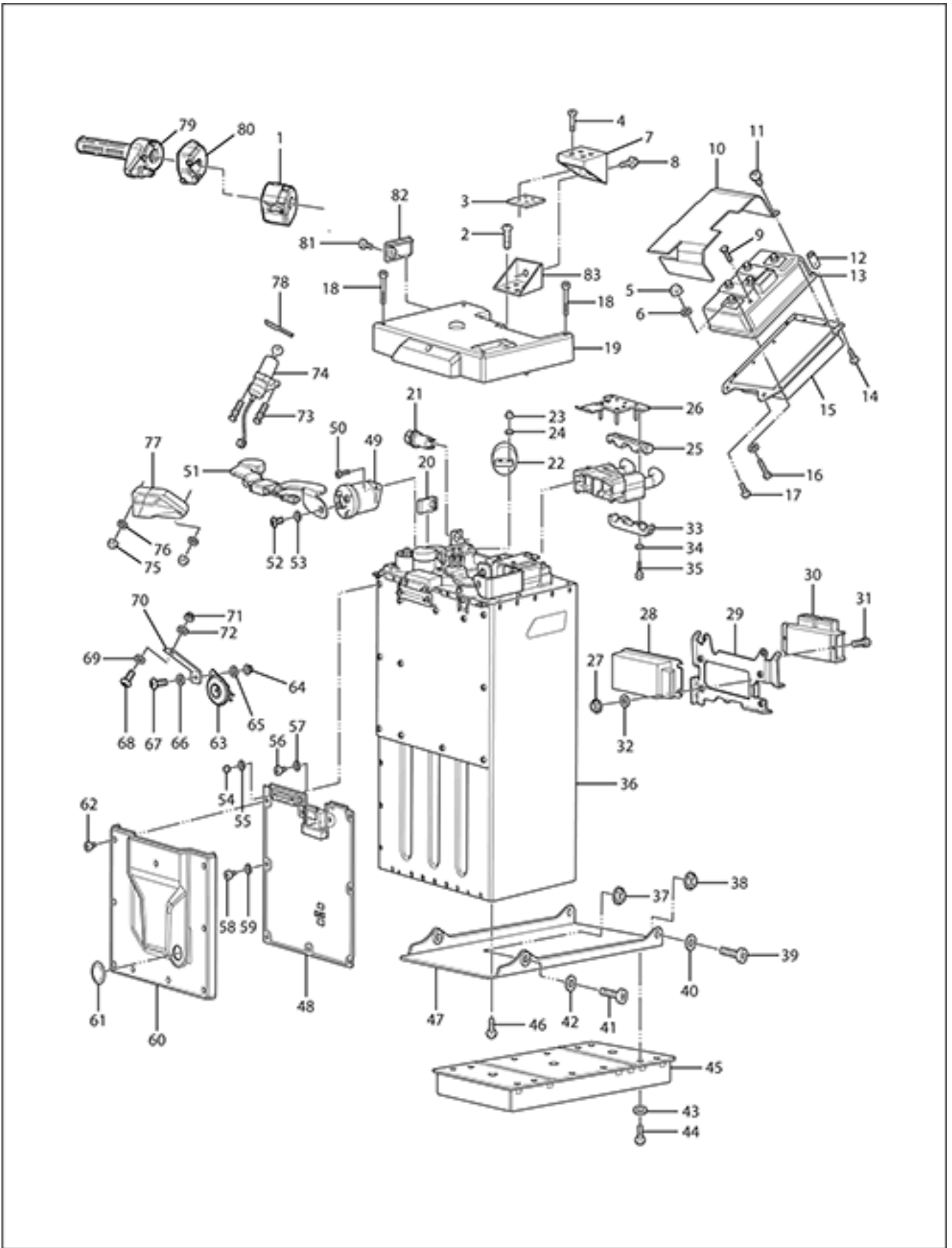




| Callout | Part Number | Part Name  | Qty. per Motorcycle |
|---------|-------------|--|---------------------|
| 1       | 45-08039    | THROTTLE BITRON HALL EFFECT PCB<br>NOTE: Supersedes 27-08000   | 1                   |
| 2       | 40-06054    | KILL MODE START SWITCH   | 1                   |
| 3       | 60-07780    | LEFT HAND SWITCHGEAR ECIE  | 1                   |
| 4       | 90-02103    | WASHER ISO 7089 6-200HV ZM-F-01  | 1                   |
| 5       | 90-02054    | PREVAILING TORQUE TYPE NUT DIN 985 M6-08 ZM-F-01   | 1                   |
| 6       | 24-08267    | #4 CONTROLLER COVER TAILPOD INSERT   | 1                   |
| 7       | 90-06250    | CONTROLLER FORMEX PAN HEAD PHILLIPS #6 SHEET<br>METAL SCREW  | 1                   |
| 8       | 90-07063    | CONTROLLER LEAD BOLTS M8X16  | 1                   |
| 9       | 20-03823    | SDS SEVCON CONTROLLER MOUNT REAR BOLT SPACERS  | 1                   |
| 10      | 60-07009    | CONTROLLER, SIZE 4 GEN 4.5 SEVCON  | 1                   |
| 11      | 90-07293    | HEX SOCKET BUTTON HEAD CAP SCREW M8X60-8.8   | 1                   |
| 12      | 20-06699    | HEATSINK #4 CONTROLLER SDS   | 1                   |
| 13      | 90-03251    | HEXAGON SOCKET HEAD CAP SCREW ISO 4762 M6X30-8.8<br>ZM-F-01  | 1                   |
| 14      | 90-07268    | HEXAGON SOCKET HEAD CAP SCREW ISO 4762 M8X25-10.9<br>ZM-F-01 REV 03 ZM-L-01 REV 01   | 1                   |
| 15      | 45-08099    | ELECTRICAL COMPONENT EVC135 CONTACTOR<br>NOTE: Modular contactor   | 1                   |
| 16      | 90-02101    | WASHER ISO 7089 5-200HV ZM-F-01  | 1                   |
| 17      | 90-07129    | HEXAGON SOCKET BUTTON HEAD SCREW ISO 7380<br>M5X30-8.8 ZM-F-01 ZM-L-02   | 1                   |
| 18      | 45-08058    | JUNCTION POST SMALL TRIMMED  | 1                   |
| 19      | 90-07125    | HEXAGON SOCKET BUTTON HEAD SCREW ISO 7380 M5X10  | 1                   |
| 20      | 45-05224    | FUSE 300A 160VDC CLASS T   | 1                   |
| 21      | 90-02100    | WASHER ISO 7089 10-200 HV ZM-F-01  | 1                   |
| 22      | 45-05240    | FUSE NUT INTERNAL  | 1                   |
| 23      | PA-210      | CONTACTOR COVER  | 1                   |
| 24      | PA-225      | LV FUSE HOLDER   | 1                   |
| 25      | PA-226      | BATTERY BOX SCREW  | 1                   |
| 26      | 90-07281    | HEXAGON SOCKET BUTTON HEAD SCREWS ISO 7380<br>M6X12-8.8 ZM-F-01 REV 03 ZM-L-01 REV 01  | 1                   |
| 27      | 60-07190    | DC-DC CONV 500W SEVCON 622-11211 ABS UNITS   | 1                   |
| 28      | 26-08120    | S ELECTRICAL PANEL   | 1                   |
| 29      | 40-08145    | ASSY MBB POTTED GEN2 STEP E<br>NOTE: Please provide VIN, Case or Claim Number when<br>ordering to ensure proper programming.<br>NOTE: Supersedes 40-08071. | 1                   |
| 29      | 40-08146    | ASSY MBB 11KW POTTED GEN2 STEP E<br>NOTE: MBB FOR 11KW BIKES ONLY. PLEASE INCLUDE VIN<br># OF BIKE AND CASE # IN THE SHIPPING NOTES.                       | 1                   |

|    |  |  |   |
|----|--|--|---|
| 30 | 90-02515                                 | HEXAGON SOCKET HEAD CAP SCREW ISO 4762 M4X12-8.8<br>ZM-F-01 REV 03   | 1 |
| 31 | 90-02103                                 | WASHER ISO 7089 6-200HV ZM-F-01  | 1 |
| 32 | 90-03236                                 | PREVAILING TORQUE TYPE NUT DIN 985 M8-10 ZM-F-01   | 1 |
| 33 | 90-02098                                 | HEXAGON SOCKET HEAD CAP SCREW ISO 4762 M8X40-8.8<br>ZM-F-01 REV 02   | 1 |
| 34 | 90-02104                                 | WASHER ISO 7089 -8-200 HV ZM-F-01  | 1 |
| 35 | 90-07126                                 | HEXAGON SOCKET HEAD CAP SCREW ISO 4762 M4X8-8.8<br>ZM-F-01 REV 03 ZM-L-02 REV 01   | 1 |
| 36 | 45-08253                                 | ONBOARD CHARGER 1300W<br>NOTE: Current design includes additional ferrite. Please contact<br>Zero Motorcycles Service Team if you need additional guidance<br>on routing.<br>NOTE: Supersedes 45-08123 and 45-08234.   | 1 |
| 37 | 46-08227                                 | ASSEMBLY BATTERY MONOLITH ZF14.4<br>NOTE: Motorcycle VIN#, Case# or Claim# must be provided<br>when ordering<br>NOTE: 2014 - FOR INSTALLING IN 2014 MODELS, INCLUDE<br>12-08080 IN THE ORDER. IN CASE OF THE BIKE HAVING A<br>POWER TANK, ALSO INCLUDE 12-08011<br>NOTE: 2013 -FOR INSTALLING IN 2013 MODELS, INCLUDE<br>TO ORDER 12-08057 | 1 |
| 38 | 40-08069                                 | BMS PCB ASSY LONG BRICK POTTED 17MY IMPL<br>NOTE: PLEASE INCLUDE CASE#, VIN# OF BIKE AND<br>BATTERY SERIAL # FOR PROGRAMMING PURPOSES  | 1 |
| 39 | 90-02102                                 | WASHER ISO 7089 4-200HV ZM-F-01  | 1 |
| 40 | 90-07127                                 | HEXAGON SOCKET HEAD CAP SCREW ISO 4762 M4X5-8.8<br>ZM-F-01 REV 03 ZM-L-02 REV 01   | 1 |
| 41 | 46-08097                                 | MONOLITH BMS COVER   | 1 |
| 42 | <i>Not Applicable to this Bike Model</i> |  |   |
| 43 | 81-08070                                 | BMS COVER PLUG, 22MM PANEL HOLE SIZE, 0.8MM-2MM<br>PANEL THICKNESS   | 1 |
| 44 | 45-08235                                 | HORN   | 1 |
| 45 | 90-02104                                 | WASHER ISO 7089 -8-200 HV ZM-F-01  | 1 |
| 46 | 90-02128                                 | HEXAGON SOCKET BUTTON HEAD CAP SCREW ISO 7380<br>M8X20-8.8 ZM-F-01 REV 03  | 1 |
| 47 | 90-07435                                 | HEX SOCKET BUTTON HEAD CAP SCREW M6X20-8.8   | 1 |
| 48 | 90-02103                                 | WASHER ISO 7089 6-200HV ZM-F-01  | 1 |
| 49 | 20-07073                                 | SDS FRAME MOUNTED HORN BRACKET   | 1 |
| 50 | 90-02054                                 | PREVAILING TORQUE TYPE NUT DIN 985 M6-08 ZM-F-01   | 1 |
| 51 | 90-02103                                 | WASHER ISO 7089 6-200HV ZM-F-01  | 1 |
| 52 | 90-02104                                 | WASHER ISO 7089 -8-200 HV ZM-F-01  | 1 |
| 53 | 90-03236                                 | PREVAILING TORQUE TYPE NUT DIN 985 M8-10 ZM-F-01   | 1 |
| 54 | 90-07124                                 | HEXAGON SOCKET BUTTON HEAD SCREW ISO 7380<br>M5X6-8.8  | 1 |

|    |          |  |   |
|----|----------|--|---|
| 55 | 90-02937 | M8X14MM BREAK AWAY HEX BOLT<br>NOTE: One Time Use Bolt   | 1 |
| 56 | 45-02692 | KEYSWITCH LOCK ZADI, IGNITION SWITCH<br>NOTE: This part is the ignition switch and keys only. If you want a matching helmet lock for 16MY motorcycles and older, please order p/n 20-05202. If you want the key switch and a lock for a tank trunk, please order 27-08030. If you want a ignition and matching locks for tank trunk and storage trunks, please order part number 27-08044. | 1 |
| 57 | 90-02054 | PREVAILING TORQUE TYPE NUT DIN 985 M6-08 ZM-F-01   | 1 |
| 58 | 90-02103 | WASHER ISO 7089 6-200HV ZM-F-01  | 1 |
| 59 | 40-08156 | DASH LCD<br>NOTE: Supersedes 40-08119  | 1 |
| 60 | 20-07062 | SDS TRIPLE CLAMP HARNESS SUPPORT   | 1 |
| 61 | 90-07124 | HEXAGON SOCKET BUTTON HEAD SCREW ISO 7380<br>M5X6-8.8  | 1 |
| 62 | 90-07124 | HEXAGON SOCKET BUTTON HEAD SCREW ISO 7380<br>M5X6-8.8  | 1 |
| 63 | 46-08045 | BATTERY CASE CONT COVER FRONT 15MY IMPL  | 1 |
| 64 | 46-08070 | BATTERY CASE SDS FRONT MY17 IMPL   | 1 |
| 65 | 46-08097 | MONOLITH BMS COVER   | 1 |



| Callout | Part Number | Part Name  | Qty. per Motorcycle |
|---------|-------------|--|---------------------|
| 1       | 60-07780    | LEFT HAND SWITCHGEAR ECIE  | 1                   |
| 2       | 90-04083    | HEXAGON SOCKET BUTTON HEAD CAP SCREW ISO 7380<br>M5X6-8.8 ZM-F-11 REV 03   | 1                   |
| 3       | 26-08144    | S LONGBRICK SUPPORT B  | 1                   |
| 4       | PA-233      | BOLT   | 1                   |
| 5       | 90-02071    | HEXAGON NUT ISO 4032 M6-8 ZM-F-01 REV 02   | 1                   |
| 6       | 90-02103    | WASHER ISO 7089 6-200HV ZM-F-01  | 1                   |
| 7       | 26-08119    | S LONGBRICK SUPPORT A  | 1                   |
| 8       | 90-07063    | CONTROLLER LEAD BOLTS M8X16  | 1                   |
| 9       | 90-07063    | CONTROLLER LEAD BOLTS M8X16  | 1                   |
| 10      | 24-08267    | #4 CONTROLLER COVER TAILPOD INSERT   | 1                   |
| 11      | 90-06250    | CONTROLLER FORMEX PAN HEAD PHILLIPS #6 SHEET<br>METAL SCREW  | 1                   |
| 12      | 20-03823    | SDS SEVCON CONTROLLER MOUNT REAR BOLT SPACERS  | 1                   |
| 13      | 60-07009    | CONTROLLER, SIZE 4 GEN 4.5 SEVCON  | 1                   |
| 14      | 90-05179    | HEXAGON SOCKET HEAD CAP SCREW ISO 4762 M8X60-8.8<br>ZM-F-01 REV 03   | 1                   |
| 15      | 20-06699    | HEATSINK #4 CONTROLLER SDS   | 1                   |
| 16      | 90-03251    | HEXAGON SOCKET HEAD CAP SCREW ISO 4762 M6X30-8.8<br>ZM-F-01  | 1                   |
| 17      | 90-07268    | HEXAGON SOCKET HEAD CAP SCREW ISO 4762 M8X25-10.9<br>ZM-F-01 REV 03 ZM-L-01 REV 01   | 1                   |
| 18      | 90-08047    | HEXAGON SOCKET HEAD CAP SCREW ISO 4762 M4X30-8.8<br>ZM-F-01 REV 03 ZM-L-02 REV 01  | 1                   |
| 19      | 46-08065    | LONGBRICK FUSE COVER MY17 IMPL   | 1                   |
| 20      | 90-02140    | CLIP-ON U-NUT M5X15.8DP  | 1                   |
| 21      | 3101-012    | BATTERY LOW VOLTAGE FUSE HOLDER  | 1                   |
| 22      | 45-05224    | FUSE 300A 160VDC CLASS T   | 1                   |
| 23      | 90-02052    | PREVAILING TORQUE TYPE NUT DIN 985 M4-08 ZM-F-01   | 1                   |
| 24      | 90-02102    | WASHER ISO 7089 4-200HV ZM-F-01  | 1                   |
| 25      | 45-08008    | CONNECTOR CONNECTOR STRAIN RELIEF CLAMP TOP 1/0<br>SB SMART  | 1                   |
| 26      | 45-08110    | CONNECTOR STRAIN RELIEF PLATE SB SMART LB  | 1                   |
| 27      | 90-02054    | PREVAILING TORQUE TYPE NUT DIN 985 M6-08 ZM-F-01   | 1                   |
| 28      | 60-07190    | DC-DC CONV 500W SEVCON 622-11211 ABS UNITS   | 1                   |
| 29      | 26-08120    | S ELECTRICAL PANEL   | 1                   |
| 30      | 40-08145    | ASSY MBB POTTED GEN2 STEP E<br>NOTE: Please provide VIN, Case or Claim Number when<br>ordering to ensure proper programming.<br>NOTE: Supersedes 40-08071. | 1                   |

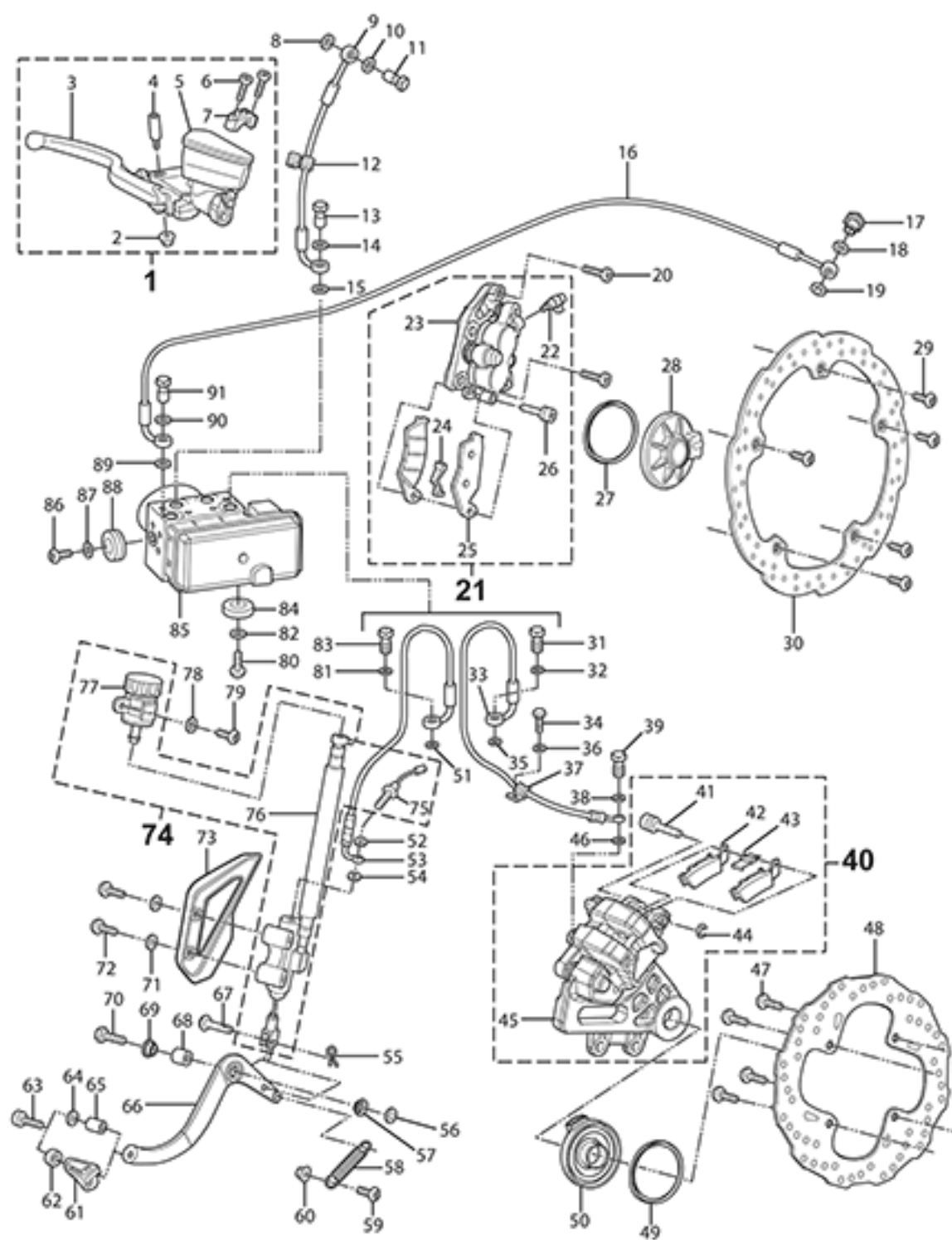
|    |          |  |   |
|----|----------|--|---|
| 30 | 40-08146 | ASSY MBB 11KW POTTED GEN2 STEP E<br>NOTE: MBB FOR 11KW BIKES ONLY. PLEASE INCLUDE VIN # OF BIKE AND CASE # IN THE SHIPPING NOTES.  | 1 |
| 31 | 90-02515 | HEXAGON SOCKET HEAD CAP SCREW ISO 4762 M4X12-8.8<br>ZM-F-01 REV 03   | 1 |
| 32 | 90-02103 | WASHER ISO 7089 6-200HV ZM-F-01  | 1 |
| 33 | 45-08007 | CONNECTOR STRAIN RELIEF CLAMP BOTTOM 1/0 SB<br>SMART   | 1 |
| 34 | 90-02480 | WASHER ISO 7089 3-200HV ZM-F-01  | 1 |
| 35 | 90-08046 | HEXAGON SOCKET HEAD CAP SCREW ISO 4762 M3X12-8.8<br>ZM-F-01 REV 03 ZM-L-02 REV 01  | 1 |
| 36 | 46-08214 | ASSEMBLY BATTERY LONG CELL BOX ZF7.2<br>NOTE: Please supply VIN, Case or Claim Number when ordering.   | 1 |
| 37 | 90-03236 | PREVAILING TORQUE TYPE NUT DIN 985 M8-10 ZM-F-01   | 1 |
| 38 | 90-03236 | PREVAILING TORQUE TYPE NUT DIN 985 M8-10 ZM-F-01   | 1 |
| 39 | 90-07269 | HEXAGON SOCKET HEAD CAP SCREW ISO 4762 M8X30-10.9<br>ZM-F-01 REV 03 ZM-L-01 REV 01   | 1 |
| 40 | 90-02104 | WASHER ISO 7089 -8-200 HV ZM-F-01  | 1 |
| 41 | 90-07269 | HEXAGON SOCKET HEAD CAP SCREW ISO 4762 M8X30-10.9<br>ZM-F-01 REV 03 ZM-L-01 REV 01   | 1 |
| 42 | 90-02104 | WASHER ISO 7089 -8-200 HV ZM-F-01  | 1 |
| 43 | 90-02101 | WASHER ISO 7089 5-200HV ZM-F-01  | 1 |
| 44 | 90-02109 | HEXAGON SOCKET BUTTON HEAD CAP SCREW ISO 7380<br>M5X12-8.8 ZM-F-01   | 1 |
| 45 | 45-08253 | ONBOARD CHARGER 1300W<br>NOTE: Current design includes additional ferrite. Please contact Zero Motorcycles Service Team if you need additional guidance on routing.<br>NOTE: Supersedes 45-08123 and 45-08234. | 1 |
| 46 | 90-07130 | HEXAGON SOCKET HEAD CAP SCREW ISO 4762 M4X10-8.8<br>ZM-F-01 REV 03 ZM-L-01 REV 01  | 1 |
| 47 | 46-08072 | LONG BRICK LOWER MOUNT   | 1 |
| 48 | 40-08069 | BMS PCB ASSY LONG BRICK POTTED 17MY IMPL<br>NOTE: PLEASE INCLUDE CASE#, VIN# OF BIKE AND BATTERY SERIAL # FOR PROGRAMMING PURPOSES   | 1 |
| 49 | 45-08104 | ELECTRICAL COMPONENT EVC135 CONTACTOR END MT<br>NOTE: Longbrick  | 1 |
| 50 | 90-02512 | HEXAGON SOCKET HEAD CAP SCREW ISO 4762 M4X16-8.8<br>ZM-F-01  | 1 |
| 51 | 46-08104 | CURRENT SENSOR BUS BAR ASSEMBLY LONGBRICK  | 1 |
| 52 | 90-07125 | HEXAGON SOCKET BUTTON HEAD SCREW ISO 7380 M5X10  | 1 |
| 53 | 90-02101 | WASHER ISO 7089 5-200HV ZM-F-01  | 1 |
| 54 | 90-02052 | PREVAILING TORQUE TYPE NUT DIN 985 M4-08 ZM-F-01   | 1 |
| 55 | 90-02102 | WASHER ISO 7089 4-200HV ZM-F-01  | 1 |

|    |          |  |   |
|----|----------|--|---|
| 56 | 90-07127 | HEXAGON SOCKET HEAD CAP SCREW ISO 4762 M4X5-8.8<br>ZM-F-01 REV 03 ZM-L-02 REV 01   | 1 |
| 57 | 90-02102 | WASHER ISO 7089 4-200HV ZM-F-01  | 1 |
| 58 | 90-07126 | HEXAGON SOCKET HEAD CAP SCREW ISO 4762 M4X8-8.8<br>ZM-F-01 REV 03 ZM-L-02 REV 01   | 1 |
| 59 | 90-02102 | WASHER ISO 7089 4-200HV ZM-F-01  | 1 |
| 60 | 46-08096 | LONGBRICK BMS COVER  | 1 |
| 61 | 80-08003 | BATTERY FRONT UPPER FILLER PLUG  | 1 |
| 62 | 90-07126 | HEXAGON SOCKET HEAD CAP SCREW ISO 4762 M4X8-8.8<br>ZM-F-01 REV 03 ZM-L-02 REV 01   | 1 |
| 63 | 45-06774 | DISC HORN K70/H12 V WITH BLACK ZINC  | 1 |
| 64 | 90-03236 | PREVAILING TORQUE TYPE NUT DIN 985 M8-10 ZM-F-01   | 1 |
| 65 | 90-02104 | WASHER ISO 7089 -8-200 HV ZM-F-01  | 1 |
| 66 | 90-02104 | WASHER ISO 7089 -8-200 HV ZM-F-01  | 1 |
| 67 | 90-02128 | HEXAGON SOCKET BUTTON HEAD CAP SCREW ISO 7380<br>M8X20-8.8 ZM-F-01 REV 03  | 1 |
| 68 | 90-07265 | HEXAGON SOCKET HEAD CAP SCREW ISO 4762 M6X20-8.8<br>ZM-F-01 REV 03 ZM-L-01 REV 01  | 1 |
| 69 | 90-02103 | WASHER ISO 7089 6-200HV ZM-F-01  | 1 |
| 70 | 20-07073 | SDS FRAME MOUNTED HORN BRACKET   | 1 |
| 71 | 90-02054 | PREVAILING TORQUE TYPE NUT DIN 985 M6-08 ZM-F-01   | 1 |
| 72 | 90-02103 | WASHER ISO 7089 6-200HV ZM-F-01  | 1 |
| 73 | 90-02937 | M8X14MM BREAK AWAY HEX BOLT<br>NOTE: One Time Use Bolt   | 1 |
| 74 | 45-02692 | KEYSWITCH LOCK ZADI, IGNITION SWITCH<br>NOTE: This part is the ignition switch and keys only. If you want a matching helmet lock for 16MY motorcycles and older, please order p/n 20-05202. If you want the key switch and a lock for a tank trunk, please order 27-08030. If you want a ignition and matching locks for tank trunk and storage trunks, please order part number 27-08044. | 1 |
| 74 | 27-08030 | KEYSWITCH AND 90 DEG TURN PANEL LATCH KEYED ALIKE SET  | 1 |
| 74 | 27-08044 | KEYSWITCH AND TWO 90 DEG TURN PANEL LATCH KEYED ALIKE SET  | 1 |
| 75 | 90-02054 | PREVAILING TORQUE TYPE NUT DIN 985 M6-08 ZM-F-01   | 1 |
| 76 | 90-02103 | WASHER ISO 7089 6-200HV ZM-F-01  | 1 |
| 77 | 40-08156 | DASH LCD<br>NOTE: Supersedes 40-08119  | 1 |
| 78 | 20-07062 | SDS TRIPLE CLAMP HARNESS SUPPORT   | 1 |
| 79 | 45-08039 | THROTTLE BITRON HALL EFFECT PCB<br>NOTE: Supersedes 27-08000   | 1 |
| 80 | 40-06054 | KILL MODE START SWITCH   | 1 |
| 81 | 90-07288 | HEXAGON SOCKET HEAD CAP SCREW ISO 4762 M5X12-8.8<br>ZM-F-01 REV 03 ZM-L-01 REV 01  | 1 |

|    |          |                                |   |
|----|----------|--------------------------------|---|
| 82 | 46-08091 | BATTERY LOW VOLTAGE FUSE COVER | 1 |
| 83 | 26-08145 | S LONGBRICK SUPPORT C          | 1 |







ZEV0064 - Braking

| Callout | Part Number | Part Name                                  | Qty. per Motorcycle |
|---------|-------------|--|---------------------|
| 1       | 25-07682    | JJUAN 12.7MM FRONT MASTER CYLINDER SDS/FXS | 1                   |

Part Detail for #1. JJUAN 12.7MM FRONT MASTER CYLINDER SDS/FXS

| Callout | Part Number | Part Name  | Qty. per Motorcycle |
|---------|-------------|--|---------------------|
| 2       | PA-130      | BRAKE LEVER PIVOT BOLT NUT   | 1                   |
| 3       | 25-08199    | JJUAN FRONT BRAKE LEVER SDS<br>NOTE: Supersedes 25-08032   | 1                   |
| 4       | PA-177      | BRAKE LEVER PIVOT BOLT   | 1                   |
| 5       | 25-08035    | JJUAN FRONT MC RESERVOIR CAP SERVICE KIT SDS   | 1                   |
| 5       | 25-08051    | JJUAN CALIPER/MASTER CYLINDER BLEED SCREW<br>SDS/XMX   | 2                   |
| 5       | 25-08061    | JJUAN FRONT MASTER CYLINDER PISTON KIT SDS   | 1                   |
| 5       | 25-08044    | FRONT MASTER CYLINDER BRAKE LIGHT SWITCH SDS   | 1                   |
| 5       | 25-07682    | JJUAN 12.7MM FRONT MASTER CYLINDER SDS/FXS   | 1                   |
| 5       | 25-08042    | JJUAN FRONT MASTER CYLINDER CIRCLIP SDS/XMX  | 1                   |
| 6       | PA-178      | MIRROR POST BOLT 6M X 20   | 1                   |
| 7       | 25-08064    | FRONT MASTER CYLINDER CLAMP KIT<br>NOTE: SDS/XMX<br>NOTE: Mount and Bolts<br>NOTE: Upper Mirror Mount RH | 1                   |

|    |          |   |   |
|----|----------|---|---|
| 8  | PA-128   | BANJO GASKET  | 1 |
| 9  | 25-07824 | SDS FRONT BRAKE LINE MC TO HCU  | 1 |
| 10 | PA-128   | BANJO GASKET  | 1 |
| 11 | PA-237   | MASTER CYLINDER BANJO BOLT  | 1 |
| 12 | 25-08023 | BRAKE LINE/WHEEL SPEED SENSOR WIRE DOUBLE C CLIP                            | 6 |
| 13 | PA-180   | BANJO BOLT  | 1 |
| 14 | PA-128   | BANJO GASKET  | 1 |
| 15 | PA-128   | BANJO GASKET  | 1 |
| 16 | 25-08096 | DS FRONT BRAKE LINE HCU TO CALIPER  | 1 |
| 17 | PA-181   | BANJO BOLT  | 1 |
| 18 | PA-128   | BANJO GASKET  | 1 |
| 19 | PA-128   | BANJO GASKET  | 1 |
| 20 | 90-08029 | HEXAGON HEAD SCREW ISO 4762 M10-1.25X40-10.9<br>ZM-F-01 REV03 ZM-L-01 REV01 | 2 |
| 21 | 25-07686 | JJUAN 32/30MM FRONT CALIPER SDS   | 1 |

Part Detail for #21. JJUAN 32/30MM FRONT CALIPER SDS

| Callout | Part Number | Part Name                       | Qty. per Motorcycle |
|---------|-------------|---------------------------------|---------------------|
| 22      | PA-182      | BLEEDER VALVE                   | 1                   |
| 23      | 25-07686    | JJUAN 32/30MM FRONT CALIPER SDS | 1                   |

|    |          |   |   |
|----|----------|---|---|
| 24 | PA-183   | ANTI RATTLE CLIP  | 1 |
| 25 | 25-08029 | BRAKE PADS SET FRONT SDS  | 1 |
| 26 | 90-08029 | HEXAGON HEAD SCREW ISO 4762 M10-1.25X40-10.9<br>ZM-F-01 REV03 ZM-L-01 REV01 | 2 |

|    |          |  |    |
|----|----------|--|----|
| 27 | 25-08080 | ABS MAGNET RING  | 2  |
| 28 | 45-07496 | MPI WHEEL SPEED SENSOR   | 2  |
| 29 | 90-07833 | CUSTOM ROTOR BOLT M8X23MM SHOULDER SCREW                                     | 5  |
| 30 | 25-08169 | BRAKE ROTOR 320MM FIXED<br>NOTE: REPLACES 25-07702                           | 1  |
| 31 | PA-185   | BANJO BOLT   | 1  |
| 32 | PA-128   | BANJO GASKET   | 1  |
| 33 | 25-08093 | SDS REAR BRAKE LINE HCU TO CALIPER<br>NOTE: Supersedes part number 25-07821. | 1  |
| 34 | 90-04084 | HEXAGON SOCKET BUTTON HEAD CAP SCREW ISO 7380<br>M5X16-8.8 ZM-F-11 REV 03    | 20 |
| 35 | PA-128   | BANJO GASKET   | 1  |
| 36 | 90-04085 | WASHER M5 X 11 X 1 NYLON 6/6 BLACK   | 14 |
| 37 | 20-01758 | LOOP CLAMP NYLON 3/4" BLK  | 1  |
| 38 | PA-128   | BANJO GASKET   | 1  |
| 39 | PA-186   | BANJO BOLT AT REAR CALIPER   | 1  |
| 40 | 25-08099 | JJUAN 34MM REAR CALIPER<br>NOTE: Old Part P/N: 25-08083                      | 1  |

Part Detail for #40. JJUAN 34MM REAR CALIPER

| Callout | Part Number | Part Name   | Qty. per Motorcycle |
|---------|-------------|---|---------------------|
| 41      | PA-187      | CALIPER SLIDE BOLT                                      | 1                   |
| 42      | 25-08030    | BRAKE PAD SET SDS REAR                                  | 1                   |
| 43      | PA-189      | ANTI RATTLE CLIP  | 1                   |
| 44      | PA-190      | CALIPER SLIDE BOLT CLIP                                 | 1                   |
| 45      | 25-08099    | JJUAN 34MM REAR CALIPER<br>NOTE: Old Part P/N: 25-08083 | 1                   |

|    |          |   |   |
|----|----------|---|---|
| 46 | PA-128   | BANJO GASKET  | 1 |
| 47 | 90-07516 | REAR BRAKE ROTOR BOLT<br>NOTE: Supersedes 90-08015. | 4 |
| 48 | 25-08170 | BRAKE ROTOR 240MM REAR                              | 1 |
| 49 | 25-08080 | ABS MAGNET RING                                     | 2 |
| 50 | 45-07496 | MPI WHEEL SPEED SENSOR                              | 2 |
| 51 | PA-128   | BANJO GASKET  | 1 |
| 52 | PA-128   | BANJO GASKET  | 1 |
| 53 | 25-07820 | SDS REAR BRAKE LINE MC TO HCU                       | 1 |
| 54 | PA-128   | BANJO GASKET  | 1 |
| 55 | 90-02133 | 1/4 X 3/4 CLEVIS PIN STEEL ZINC                     | 1 |
| 56 | 90-02100 | WASHER ISO 7089 10-200 HV ZM-F-01                   | 8 |

|    |          |  |    |
|----|----------|--|----|
| 57 | 20-02465 | IGLIDE BEARING GFM-1416-06   | 2  |
| 58 | 25-08070 | BRAKE PEDAL SPRING   | 1  |
| 59 | 90-07323 | HEXAGON SOCKET BUTTON HEAD CAP SCREW ISO 7380<br>M6X25-8.8 ZM-F-01 REV 03 ZM-L-01 REV 01   | 2  |
| 60 | 90-02054 | PREVAILING TORQUE TYPE NUT DIN 985 M6-08 ZM-F-01   | 9  |
| 61 | 25-08072 | BRAKE PEDAL OFF ROAD PEG   | 1  |
| 62 | 20-02455 | X BRAKE PEDAL SPACER   | 1  |
| 63 | 90-07265 | HEXAGON SOCKET HEAD CAP SCREW ISO 4762 M6X20-8.8<br>ZM-F-01 REV 03 ZM-L-01 REV 01  | 5  |
| 64 | 90-02103 | WASHER ISO 7089 6-200HV ZM-F-01  | 29 |
| 65 | 25-08073 | BRAKE PEDAL STREET PEG   | 1  |
| 66 | 25-08071 | BRAKE PEDAL BASE<br>NOTE: Brake Pedal Off Road Peg - 25-08072 - sold seperately<br>NOTE: Brake Pedal Street Peg - 25-08073 - sold seperately | 1  |
| 67 | 90-02133 | 1/4 X 3/4 CLEVIS PIN STEEL ZINC  | 1  |
| 68 | 20-02455 | X BRAKE PEDAL SPACER   | 1  |
| 69 | 20-02465 | IGLIDE BEARING GFM-1416-06   | 2  |
| 70 | 90-07318 | HEXAGON FLANGE BOLT DIN 6921 M10X35 10.9 ZM-F-01<br>REV 03 ZM-L-01 REV 01  | 1  |
| 71 | 90-02103 | WASHER ISO 7089 6-200HV ZM-F-01  | 29 |
| 72 | 90-07323 | HEXAGON SOCKET BUTTON HEAD CAP SCREW ISO 7380<br>M6X25-8.8 ZM-F-01 REV 03 ZM-L-01 REV 01   | 2  |
| 73 | 25-07457 | MASTER CYLINDER GUARD FOR J-JUAN MASTER<br>CYLINDER  | 1  |
| 74 | 25-08015 | JJUAN 12MM REAR MASTER CYLINDER SDS  | 1  |

Part Detail for #74. JJUAN 12MM REAR MASTER CYLINDER SDS

| Callout | Part Number | Part Name                                       | Qty. per<br>Motorcycle |
|---------|-------------|---|------------------------|
| 75      | 25-08039    | REAR STOP LAMP SWITCH                           | 1                      |
| 76      | 25-08067    | JJUAN REAR MASTER CYLINDER CIRCLIP SDS/XMX      | 1                      |
| 76      | 25-08062    | JJUAN REAR MASTER CYLINDER PISTON KIT SDS       | 1                      |
| 76      | 25-08040    | JJUAN REAR MC RESERVOIR HOSE SERVICE KIT SDS    | 1                      |
| 76      | 25-08037    | JJUAN REAR MC PUSHROD SERVICE KIT SDS/XMX       | 1                      |
| 76      | 25-08015    | JJUAN 12MM REAR MASTER CYLINDER SDS             | 1                      |
| 77      | 25-08036    | JJUAN REAR MC RESERVOIR CAP SERVICE KIT SDS/XMX | 1                      |

|    |          |  |    |
|----|----------|--|----|
| 78 | 90-02103 | WASHER ISO 7089 6-200HV ZM-F-01  | 29 |
| 79 | 90-07273 | HEXAGON SOCKET BUTTON HEAD CAP SCREW ISO 7380<br>M6X16-8.8 ZM-F-01 REV 03 ZM-L-01 REV 01 | 3  |
| 80 | 90-07273 | HEXAGON SOCKET BUTTON HEAD CAP SCREW ISO 7380<br>M6X16-8.8 ZM-F-01 REV 03 ZM-L-01 REV 01 | 3  |
| 81 | PA-128   | BANJO GASKET   | 1  |
| 82 | 90-02105 | WASHER ISO 7093-1 6-200 HV ZM-F-01   | 4  |
| 83 | PA-191   | BANJO BOLT AT HCU  | 1  |
| 84 | 90-08027 | GROMMET VIBRATION ISOLATION M6   | 2  |

|    |          |  |   |
|----|----------|--|---|
| 85 | 25-08092 | BOSCH ABS HCU FLUID FILLED 6 PROFILE VARIANTS<br>NOTE: Supersedes part number 25-08081 and 25-08082. | 1 |
| 86 | 90-07273 | HEXAGON SOCKET BUTTON HEAD CAP SCREW ISO 7380<br>M6X16-8.8 ZM-F-01 REV 03 ZM-L-01 REV 01             | 3 |
| 87 | 90-02105 | WASHER ISO 7093-1 6-200 HV ZM-F-01   | 4 |
| 88 | 90-08027 | GROMMET VIBRATION ISOLATION M6   | 2 |
| 89 | PA-128   | BANJO GASKET   | 1 |
| 90 | PA-128   | BANJO GASKET   | 1 |
| 91 | PA-185   | BANJO BOLT   | 1 |