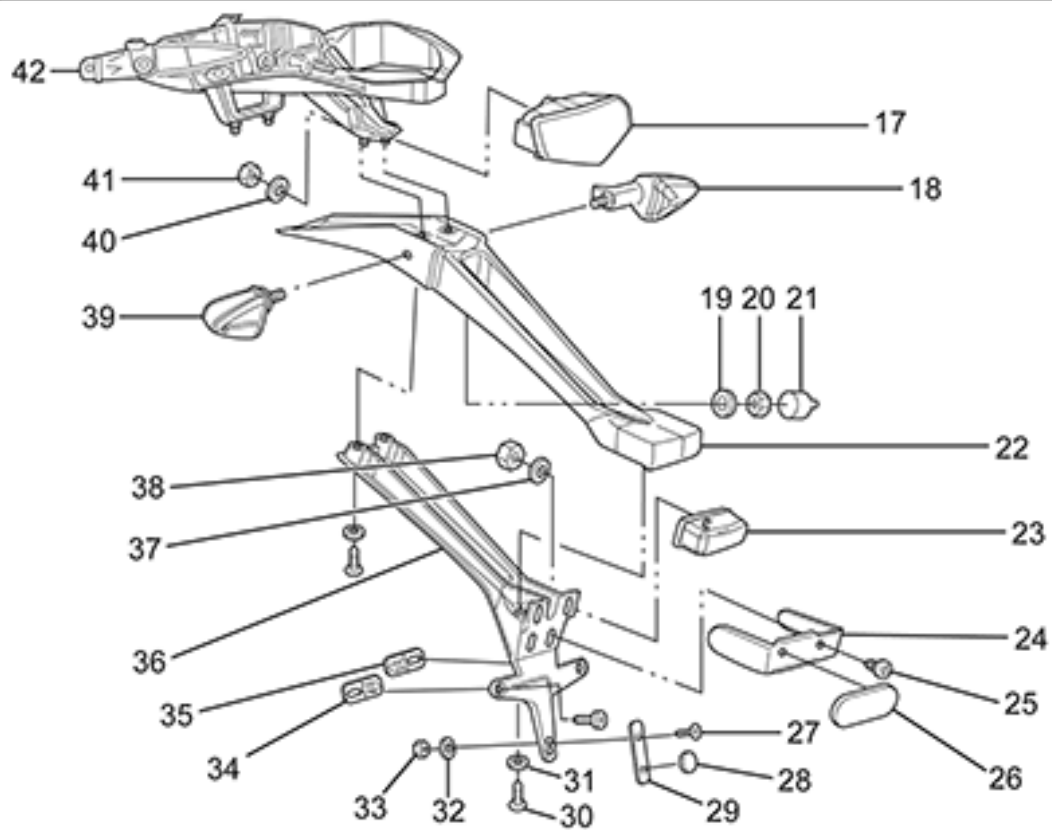
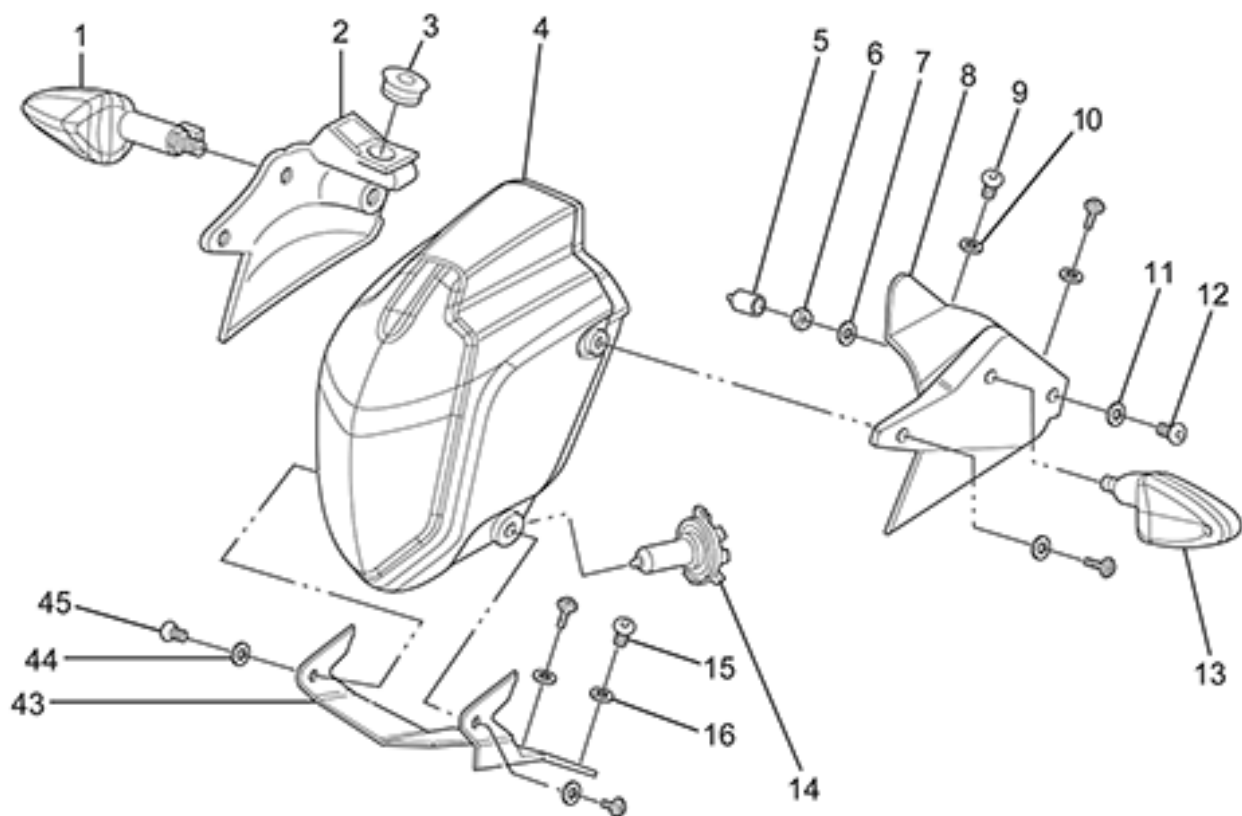


**Zero Motocycles**  
**DSR 2016 Exploded Views**

ZEV0021 - Lighting

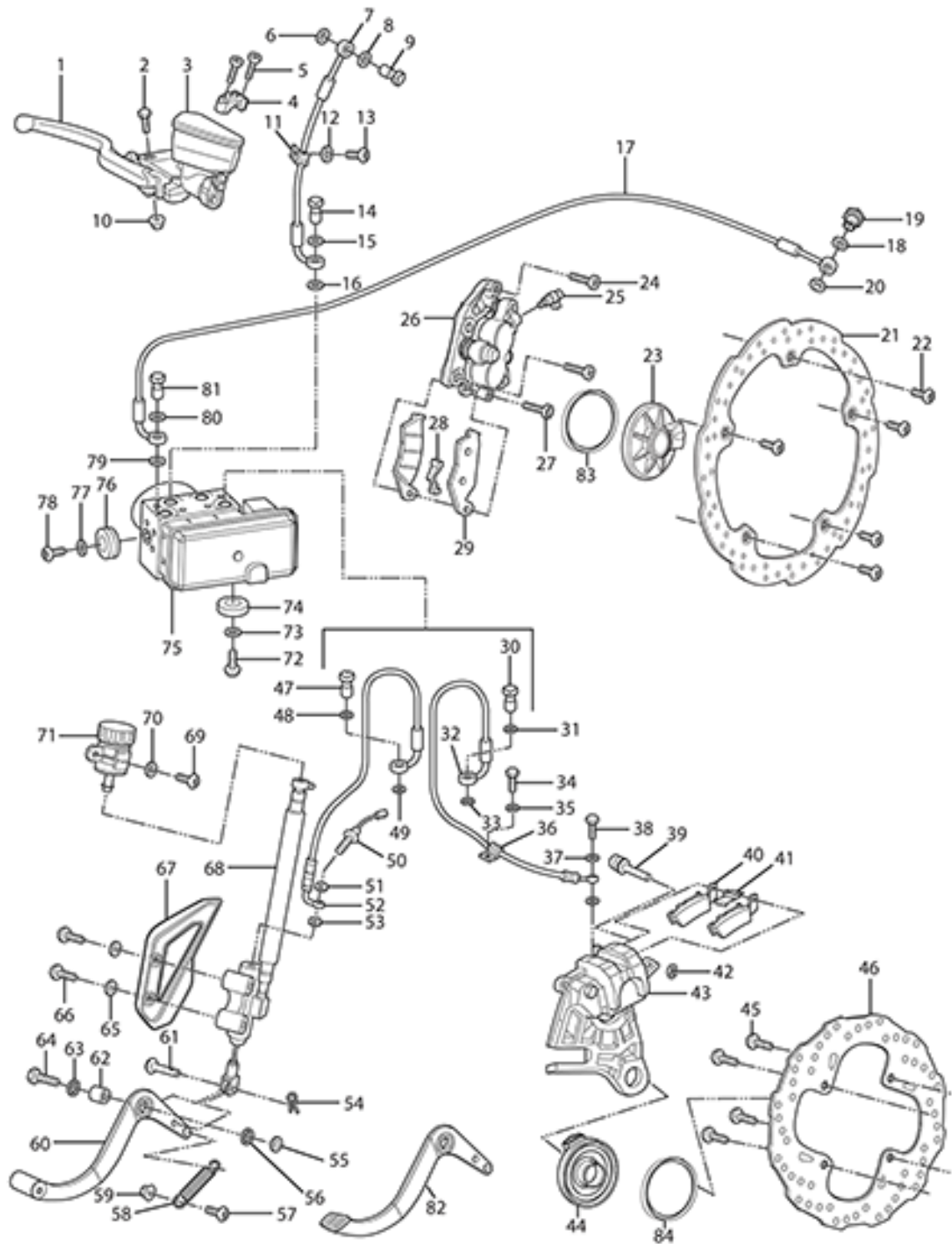


ZEV0021 - Lighting

| Callout | Part Number | Part Name   | Qty. per Motorcycle |
|---------|-------------|---|---------------------|
| 1       | 65-03462    | TURN SIGNAL FR-RH RR-LH   | 1                   |
| 2       | 24-08091    | HEADLIGHT MOUNT RIGHT FOR ABS   | 1                   |
| 3       | 27-08034    | 12V ACCESSORY COVER, SMALL  | 1                   |
| 4       | 45-03679    | HEADLIGHT ASSY, 60/55W, TRIOM   | 1                   |
| 5       | 20-03146    | TURN SIGNAL HEX NUT CAP   | 1                   |
| 6       | 90-02072    | HEXAGON THIN NUT DIN 439-B M10 1.5-04 ZM-F-01   | 1                   |
| 7       | 90-02043    | TOOTHED LOCK WASHER WITH EXTERNAL TEETH DIN 6797<br>A M10-B85 ZM-F-01                 | 1                   |
| 8       | 24-08092    | HEADLIGHT MOUNT LEFT FOR ABS  | 1                   |
| 9       | 90-04084    | HEXAGON SOCKET BUTTON HEAD CAP SCREW ISO 7380<br>M5X16-8.8 ZM-F-11 REV 03             | 1                   |
| 10      | 90-04085    | WASHER M5 X 11 X 1 NYLON 6/6 BLACK  | 1                   |
| 11      | 90-04085    | WASHER M5 X 11 X 1 NYLON 6/6 BLACK  | 1                   |
| 12      | 90-04084    | HEXAGON SOCKET BUTTON HEAD CAP SCREW ISO 7380<br>M5X16-8.8 ZM-F-11 REV 03             | 1                   |
| 13      | 65-03463    | TURN SIGNAL FR-LH RR-RH   | 1                   |
| 14      | 65-08002    | SDS HEADLIGHT BULB  | 1                   |
| 15      | 90-07281    | HEXAGON SOCKET BUTTON HEAD SCREWS ISO 7380<br>M6X12-8.8 ZM-F-01 REV 03 ZM-L-01 REV 01 | 1                   |
| 16      | 90-02101    | WASHER ISO 7089 5-200HV ZM-F-01   | 1                   |
| 17      | 65-04459    | LED TAIL LIGHT TRIOM  | 1                   |
| 18      | 65-03463    | TURN SIGNAL FR-LH RR-RH   | 1                   |
| 19      | 90-02043    | TOOTHED LOCK WASHER WITH EXTERNAL TEETH DIN 6797<br>A M10-B85 ZM-F-01                 | 1                   |
| 20      | 90-02072    | HEXAGON THIN NUT DIN 439-B M10 1.5-04 ZM-F-01   | 1                   |
| 21      | 20-03146    | TURN SIGNAL HEX NUT CAP   | 1                   |
| 22      | 24-04439    | SDS TAIL POD TOP<br>NOTE: Top half only. Order bottom half PN: 24-05158               | 1                   |
| 23      | 65-04460    | LICENSE PLATE LIGHT   | 1                   |
| 24      | 24-05159    | REFLECTOR MOUNT BRACKET   | 1                   |
| 25      | 90-05885    | PHILIPS HEAD SHEET METAL SCREW 6 X 1/2  | 10                  |
| 26      | 20-03487    | REFLECTOR, OVAL, ADH BACK, RED ECIE   | 1                   |
| 27      | 90-05244    | HEXAGON SOCKET COUNTERSUNK HEAD SCREW ISO<br>10642 M5X12-10.9 ZM-F-01 REV 03          | 4                   |
| 28      | 20-05241    | LICENSE PLATE BUMPER  | 1                   |
| 29      | 24-05292    | LICENSE PLATE BRACKET EXTENSION LOWER<br>NOTE: ONLY USED IN EU/AUS REGION             | 1                   |
| 30      | 90-07281    | HEXAGON SOCKET BUTTON HEAD SCREWS ISO 7380<br>M6X12-8.8 ZM-F-01 REV 03 ZM-L-01 REV 01 | 1                   |
| 31      | 90-02103    | WASHER ISO 7089 6-200HV ZM-F-01   | 10                  |

|    |            |  |    |
|----|------------|--|----|
| 32 | 90-04085   | WASHER M5 X 11 X 1 NYLON 6/6 BLACK   | 4  |
| 33 | 90-02053   | PREVAILING TORQUE TYPE NUT DIN 985 M5-08 ZM-F-01<br>REV 02                 | 8  |
| 34 | 24-05161   | LICENSE PLATE BRACKET EXTENSIONS<br>NOTE: ONLY USED IN EU/AUS REGIONS      | 2  |
| 35 | 24-05161   | LICENSE PLATE BRACKET EXTENSIONS<br>NOTE: ONLY USED IN EU/AUS REGIONS      | 2  |
| 36 | 24-05158   | SDS TAIL POD BOTTOM<br>NOTE: Bottom half only. Order top half PN: 24-04439 | 1  |
| 37 | 90-07389   | TOOTHED LOCK WASHER WITH EXTERNAL TEETH DIN 6797<br>A M5 ZM-F-01           | 4  |
| 38 | 90-02053   | PREVAILING TORQUE TYPE NUT DIN 985 M5-08 ZM-F-01<br>REV 02                 | 8  |
| 39 | 65-03462   | TURN SIGNAL FR-RH RR-LH  | 1  |
| 40 | 90-02103   | WASHER ISO 7089 6-200HV ZM-F-01  | 10 |
| 41 | 90-02054   | PREVAILING TORQUE TYPE NUT DIN 985 M6-08 ZM-F-01                           | 1  |
| 42 | 20-05883   | SR TAIL FRAME  | 1  |
| 43 | 20-05910   | HEADLIGHT BRACKET  | 1  |
| 44 | 90-02101   | WASHER ISO 7089 5-200HV ZM-F-01  | 4  |
| 45 | 90-02545-1 | BOLT M6 X 8  | 1  |





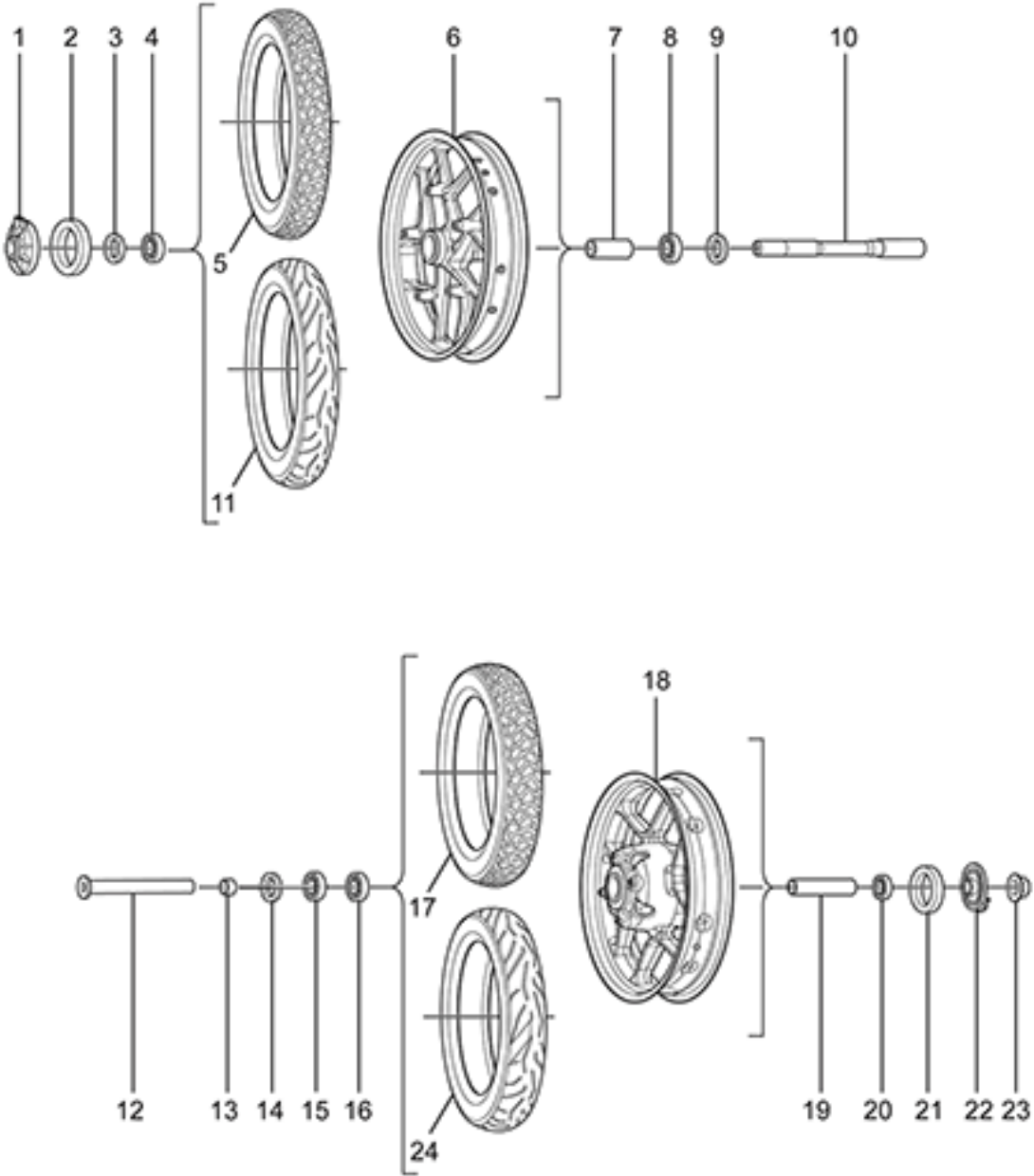
## ZEV0022 - Braking

| Callout | Part Number | Part Name  | Qty. per Motorcycle |
|---------|-------------|--|---------------------|
| 1       | 25-08032    | SDS BRAKE JJUAN LEVER<br>NOTE: Superseded by 25-08199  | 1                   |
| 2       | PA-177      | BRAKE LEVER PIVOT BOLT   | 1                   |
| 3       | 25-07682    | JJUAN 12.7MM FRONT MASTER CYLINDER SDS/FXS   | 1                   |
| 4       | 25-08064    | FRONT MASTER CYLINDER CLAMP KIT<br>NOTE: SDS/XMX<br>NOTE: Mount and Bolts<br>NOTE: Upper Mirror Mount RH | 1                   |
| 5       | PA-178      | MIRROR POST BOLT 6M X 20   | 1                   |
| 6       | PA-128      | BANJO GASKET   | 1                   |
| 7       | 25-07824    | SDS FRONT BRAKE LINE MC TO HCU   | 1                   |
| 8       | PA-128      | BANJO GASKET   | 1                   |
| 9       | 90-08014-3  | BANJO BOLT   | 1                   |
| 10      | PA-130      | BRAKE LEVER PIVOT BOLT NUT   | 1                   |
| 11      | 20-01758    | LOOP CLAMP NYLON 3/4" BLK  | 1                   |
| 12      | PA-223      | FLAT WASHER  | 1                   |
| 13      | PA-224      | BOLT   | 1                   |
| 14      | PA-180      | BANJO BOLT   | 1                   |
| 15      | PA-128      | BANJO GASKET   | 1                   |
| 16      | PA-128      | BANJO GASKET   | 1                   |
| 17      | 25-07826    | DS FRONT BRAKE LINE HCU TO CALIPER   | 1                   |
| 18      | PA-128      | BANJO GASKET   | 1                   |
| 19      | PA-181      | BANJO BOLT   | 1                   |
| 20      | PA-128      | BANJO GASKET   | 1                   |
| 21      | 25-07702    | BRAKE ROTOR 320MM FIXED<br>NOTE: REPLACED BY 25-08169  | 1                   |
| 22      | 90-07833    | CUSTOM ROTOR BOLT M8X23MM SHOULDER SCREW   | 1                   |
| 23      | 45-07496    | MPI WHEEL SPEED SENSOR   | 1                   |
| 24      | 90-08029    | HEXAGON HEAD SCREW ISO 4762 M10-1.25X40-10.9<br>ZM-F-01 REV03 ZM-L-01 REV01                              | 1                   |
| 25      | PA-182      | BLEEDER VALVE  | 1                   |
| 26      | 25-07686    | JJUAN 32/30MM FRONT CALIPER SDS  | 1                   |
| 27      | 90-08029    | HEXAGON HEAD SCREW ISO 4762 M10-1.25X40-10.9<br>ZM-F-01 REV03 ZM-L-01 REV01                              | 1                   |
| 28      | PA-183      | ANTI RATTLE CLIP   | 1                   |
| 29      | 25-08029    | BRAKE PADS SET FRONT SDS   | 1                   |
| 30      | PA-185      | BANJO BOLT   | 1                   |
| 31      | PA-128      | BANJO GASKET   | 1                   |
| 32      | 25-08093    | SDS REAR BRAKE LINE HCU TO CALIPER<br>NOTE: Supersedes part number 25-07821.                             | 1                   |

|    |  |  |   |
|----|--|--|---|
| 33 | PA-128                                   | BANJO GASKET   | 1 |
| 34 | 90-07292                                 | HEXAGON SOCKET BUTTON HEAD CAP SCREW ISO 7380<br>M5X16-8.8 ZM-F-11 REV 01 ZM-L-01 REV 01<br>NOTE: Does not apply to DS | 1 |
| 35 | 90-02105                                 | WASHER ISO 7093-1 6-200 HV ZM-F-01   | 1 |
| 36 | 20-01758-1                               | BRAKE LINE GUIDE   | 1 |
| 37 | PA-128                                   | BANJO GASKET   | 1 |
| 38 | PA-186                                   | BANJO BOLT AT REAR CALIPER   | 1 |
| 39 | PA-187                                   | CALIPER SLIDE BOLT   | 1 |
| 40 | 25-08030                                 | BRAKE PAD SET SDS REAR   | 1 |
| 41 | PA-189                                   | ANTI RATTLE CLIP   | 1 |
| 42 | PA-190                                   | CALIPER SLIDE BOLT CLIP  | 1 |
| 43 | 25-08099                                 | JJUAN 34MM REAR CALIPER<br>NOTE: Old Part P/N: 25-08083  | 1 |
| 44 | 45-07496                                 | MPI WHEEL SPEED SENSOR   | 1 |
| 45 | 90-07516                                 | REAR BRAKE ROTOR BOLT<br>NOTE: Supersedes 90-08015.  | 1 |
| 46 | 25-08170                                 | BRAKE ROTOR 240MM REAR   | 1 |
| 47 | PA-191                                   | BANJO BOLT AT HCU  | 1 |
| 48 | PA-128                                   | BANJO GASKET   | 1 |
| 49 | PA-128                                   | BANJO GASKET   | 1 |
| 50 | PA-192                                   | BRAKE LIGHT SWITCH<br>NOTE: Not sold separately. Please order the Master Cylinder.                                     | 1 |
| 51 | PA-128                                   | BANJO GASKET   | 1 |
| 52 | 25-07820                                 | SDS REAR BRAKE LINE MC TO HCU  | 1 |
| 53 | PA-128                                   | BANJO GASKET   | 1 |
| 54 | 90-02133                                 | 1/4 X 3/4 CLEVIS PIN STEEL ZINC  | 1 |
| 55 | 90-02100                                 | WASHER ISO 7089 10-200 HV ZM-F-01  | 1 |
| 56 | 20-02465                                 | IGLIDE BEARING GFM-1416-06   | 1 |
| 57 | 90-02124-1                               | BUTTON CAP SCREW M6 X 25   | 1 |
| 58 | 25-08070                                 | BRAKE PEDAL SPRING   | 1 |
| 59 | 20-02465                                 | IGLIDE BEARING GFM-1416-06   | 1 |
| 60 | <i>Not Applicable to this Bike Model</i> |  |   |
| 61 | 90-02133                                 | 1/4 X 3/4 CLEVIS PIN STEEL ZINC  | 1 |
| 62 | 20-02455                                 | X BRAKE PEDAL SPACER   | 1 |
| 63 | 20-02465                                 | IGLIDE BEARING GFM-1416-06   | 1 |
| 64 | 90-07318                                 | HEXAGON FLANGE BOLT DIN 6921 M10X35 10.9 ZM-F-01<br>REV 03 ZM-L-01 REV 01  | 1 |
| 65 | 90-02103                                 | WASHER ISO 7089 6-200HV ZM-F-01  | 1 |
| 66 | 90-07323                                 | HEXAGON SOCKET BUTTON HEAD CAP SCREW ISO 7380<br>M6X25-8.8 ZM-F-01 REV 03 ZM-L-01 REV 01                               | 1 |
| 67 | 25-07457                                 | MASTER CYLINDER GUARD FOR J-JUAN MASTER<br>CYLINDER  | 1 |
| 68 | 25-08015                                 | JJUAN 12MM REAR MASTER CYLINDER SDS  | 1 |
| 69 | 90-07273                                 | HEXAGON SOCKET BUTTON HEAD CAP SCREW ISO 7380<br>M6X16-8.8 ZM-F-01 REV 03 ZM-L-01 REV 01                               | 1 |



|    |          |  |   |
|----|----------|--|---|
| 70 | PA-196   | WASHER   | 1 |
| 71 | PA-197   | REAR MASTER CYLINDER RESERVOIR   | 1 |
| 72 | 90-07273 | HEXAGON SOCKET BUTTON HEAD CAP SCREW ISO 7380<br>M6X16-8.8 ZM-F-01 REV 03 ZM-L-01 REV 01   | 1 |
| 73 | 90-02105 | WASHER ISO 7093-1 6-200 HV ZM-F-01   | 1 |
| 74 | 90-08027 | GROMMET VIBRATION ISOLATION M6   | 1 |
| 75 | 25-08092 | BOSCH ABS HCU FLUID FILLED 6 PROFILE VARIANTS<br>NOTE: Supersedes part number 25-08081 and 25-08082.   | 1 |
| 76 | 90-08027 | GROMMET VIBRATION ISOLATION M6   | 1 |
| 77 | 90-02105 | WASHER ISO 7093-1 6-200 HV ZM-F-01   | 0 |
| 78 | 90-07273 | HEXAGON SOCKET BUTTON HEAD CAP SCREW ISO 7380<br>M6X16-8.8 ZM-F-01 REV 03 ZM-L-01 REV 01   | 1 |
| 79 | PA-128   | BANJO GASKET   | 1 |
| 80 | PA-128   | BANJO GASKET   | 1 |
| 81 | PA-185   | BANJO BOLT   | 1 |
| 82 | 25-08071 | BRAKE PEDAL BASE<br>NOTE: Brake Pedal Off Road Peg - 25-08072 - sold seperately<br>NOTE: Brake Pedal Street Peg - 25-08073 - sold seperately | 1 |
| 83 | 25-08080 | ABS MAGNET RING  | 1 |
| 84 | 25-08080 | ABS MAGNET RING  | 1 |



## ZEV0023 - Wheel Assy

| Callout | Part Number                              | Part Name  | Qty. per Motorcycle |
|---------|--|--|---------------------|
| 1       | 45-07496                                 | MPI WHEEL SPEED SENSOR   | 1                   |
| 2       | 25-08080                                 | ABS MAGNET RING  | 1                   |
| 3       | 23-07774                                 | 6204 BEARING DUST SEAL   | 2                   |
| 4       | 20-06138                                 | BEARING 6204<br>NOTE: Bearing used as swing arm bearing in some models and as the wheel bearing (qty of 5; 2 in front and three in rear wheel) in 2015 and later models.<br>NOTE: Manufacturer part number is 6204-2RS | 2                   |
| 5       | 23-08002                                 | TIRE, FRONT, 100/90-19 57H, PIRELLI MT-60  | 1                   |
| 6       | 23-08066-4                               | 2.50X19 DS FRONT CAST WHEEL ASSY SILVER BLACK  | 1                   |
| 7       | 23-07775                                 | FRONT WHEEL BEARING TUBE   | 1                   |
| 8       | 20-06138                                 | BEARING 6204<br>NOTE: Bearing used as swing arm bearing in some models and as the wheel bearing (qty of 5; 2 in front and three in rear wheel) in 2015 and later models.<br>NOTE: Manufacturer part number is 6204-2RS | 2                   |
| 9       | 23-07774                                 | 6204 BEARING DUST SEAL   | 2                   |
| 10      | 23-07491                                 | HOLLOW AXLE FRONT  | 1                   |
| 11      | <i>Not Applicable to this Bike Model</i> |  |                     |
| 12      | 23-08032                                 | REAR AXLE 20MM HOLLOW, ROUNDED END   | 1                   |
| 13      | 23-07489                                 | WHEEL SPACER DRIVE SIDE REAR   | 1                   |
| 14      | 23-07774                                 | 6204 BEARING DUST SEAL   | 2                   |
| 15      | 20-06138                                 | BEARING 6204<br>NOTE: Bearing used as swing arm bearing in some models and as the wheel bearing (qty of 5; 2 in front and three in rear wheel) in 2015 and later models.<br>NOTE: Manufacturer part number is 6204-2RS | 2                   |
| 16      | 20-06138                                 | BEARING 6204<br>NOTE: Bearing used as swing arm bearing in some models and as the wheel bearing (qty of 5; 2 in front and three in rear wheel) in 2015 and later models.<br>NOTE: Manufacturer part number is 6204-2RS | 2                   |
| 17      | 23-08003                                 | TIRE, REAR, 130/80-17 65H, PIRELLI MT-60   | 1                   |
| 18      | 23-08056-4                               | WHEEL 3.50X17 SDS REAR CAST WHEEL ASSY 16MY IMPL BLACK-SILVER C  | 1                   |
| 19      | 23-07776                                 | REAR WHEEL BEARING TUBE 15MY   | 1                   |
| 20      | 20-06138                                 | BEARING 6204<br>NOTE: Bearing used as swing arm bearing in some models and as the wheel bearing (qty of 5; 2 in front and three in rear wheel) in 2015 and later models.<br>NOTE: Manufacturer part number is 6204-2RS | 2                   |

|    |          |   |   |
|----|----------|---|---|
| 21 | 25-08080 | ABS MAGNET RING                                     | 1 |
| 22 | 45-07496 | MPI WHEEL SPEED SENSOR                              | 1 |
| 23 | 90-05678 | U-NUT M20X1.5 FLANGE 27S 15H<br>NOTE: Rear Axle Nut | 1 |

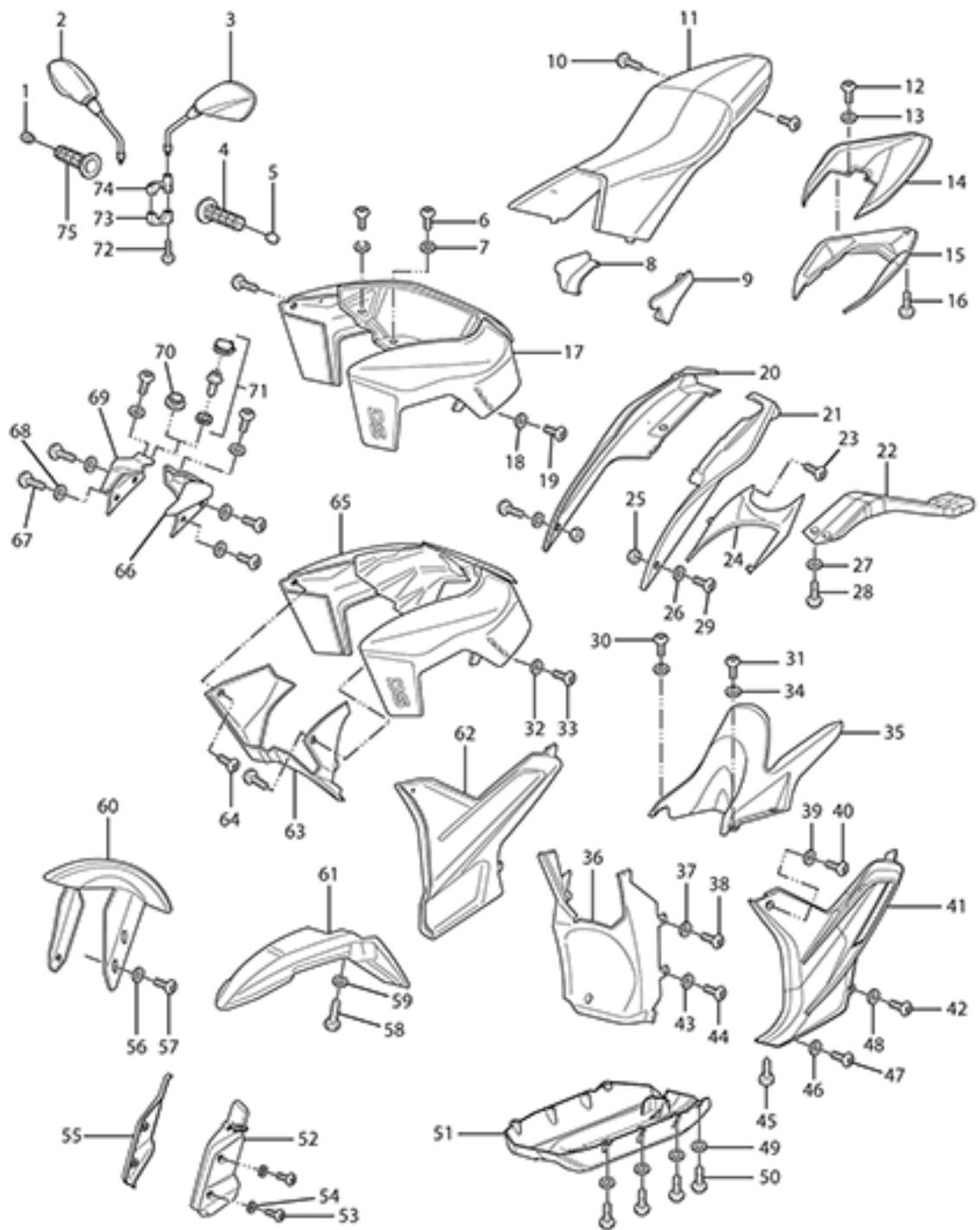




## ZEV0024 - Steering Systems

| Callout | Part Number | Part Name  | Qty. per Motorcycle |
|---------|-------------|--|---------------------|
| 1       | 27-08151    | HIGH RISE HANDLEBAR NO LOGO<br>NOTE: Supersedes part number 27-08050.  | 1                   |
| 2       | 90-02096    | MOTOR MOUNTING LEFT FRONT TOP AND LEFT FRONT<br>BOTTOM BOLT  | 1                   |
| 3       | 22-00687    | S HANDLEBAR CLAMP  | 1                   |
| 4       | 22-06279    | STEERING STEM THIN NUT M27 X 1.5 X 8MM   | 1                   |
| 5       | 20-06278    | WASHER 41 - 27.5 X 2 MM  | 1                   |
| 6       | 22-07622    | SDS UPPER TRIPLE CLAMP 15MY IMP  | 1                   |
| 7       | 90-02094    | HEXAGON SOCKET HEAD CAP SCREW ISO 4762 M8X25-10.9<br>ZM-F-01 REV 03  | 1                   |
| 8       | 22-06257    | STEERING STEM LOCK NUT M 30 X1.5 MM  | 1                   |
| 9       | 81-08045    | BEARING LIP SEAL OVERMOLDED 55MM OD<br>NOTE: Supersedes part 20-06113  | 1                   |
| 10      | 20-06068    | STEERING HEAD BEARING KOYO SAC3055-1   | 1                   |
| 11      | 20-06068    | STEERING HEAD BEARING KOYO SAC3055-1   | 1                   |
| 12      | 90-02109    | HEXAGON SOCKET BUTTON HEAD CAP SCREW ISO 7380<br>M5X12-8.8 ZM-F-01   | 1                   |
| 13      | 90-02101    | WASHER ISO 7089 5-200HV ZM-F-01  | 1                   |
| 14      | 20-05910    | HEADLIGHT BRACKET  | 1                   |
| 15      | 81-08045    | BEARING LIP SEAL OVERMOLDED 55MM OD<br>NOTE: Supersedes part 20-06113  | 1                   |
| 16      | 22-08092    | SDS LOWER TRIPLE CLAMP ASSY<br>NOTE: REPLACES 25-08082   | 1                   |
| 17      | 90-02104    | WASHER ISO 7089 -8-200 HV ZM-F-01  | 1                   |
| 18      | 90-02094    | HEXAGON SOCKET HEAD CAP SCREW ISO 4762 M8X25-10.9<br>ZM-F-01 REV 03  | 1                   |
| 19      | 24-04437-2  | DS/X/MX FRONT FENDER XMX BLACK#1<br>NOTE: Does not apply to S and SR   | 1                   |
| 20      | 90-02107    | WASHER ISO 7093-1 5-200HV ZM-F-01<br>NOTE: Does not apply to S and SR  | 1                   |
| 21      | 90-07292    | HEXAGON SOCKET BUTTON HEAD CAP SCREW ISO 7380<br>M5X16-8.8 ZM-F-11 REV 01 ZM-L-01 REV 01<br>NOTE: Does not apply to DS | 1                   |
| 22      | 22-05877    | DS FORK 41MM LEFT  | 1                   |
| 23      | PA-200      | INNER BEARING SPACER   | 1                   |
| 24      | PA-205      | M8 X 30 BOLT   | 1                   |
| 25      | 23-07491    | HOLLOW AXLE FRONT  | 1                   |
| 26      | 22-05878    | DS FORK 41MM RIGHT   | 1                   |

ZEV0025 - Body Trim





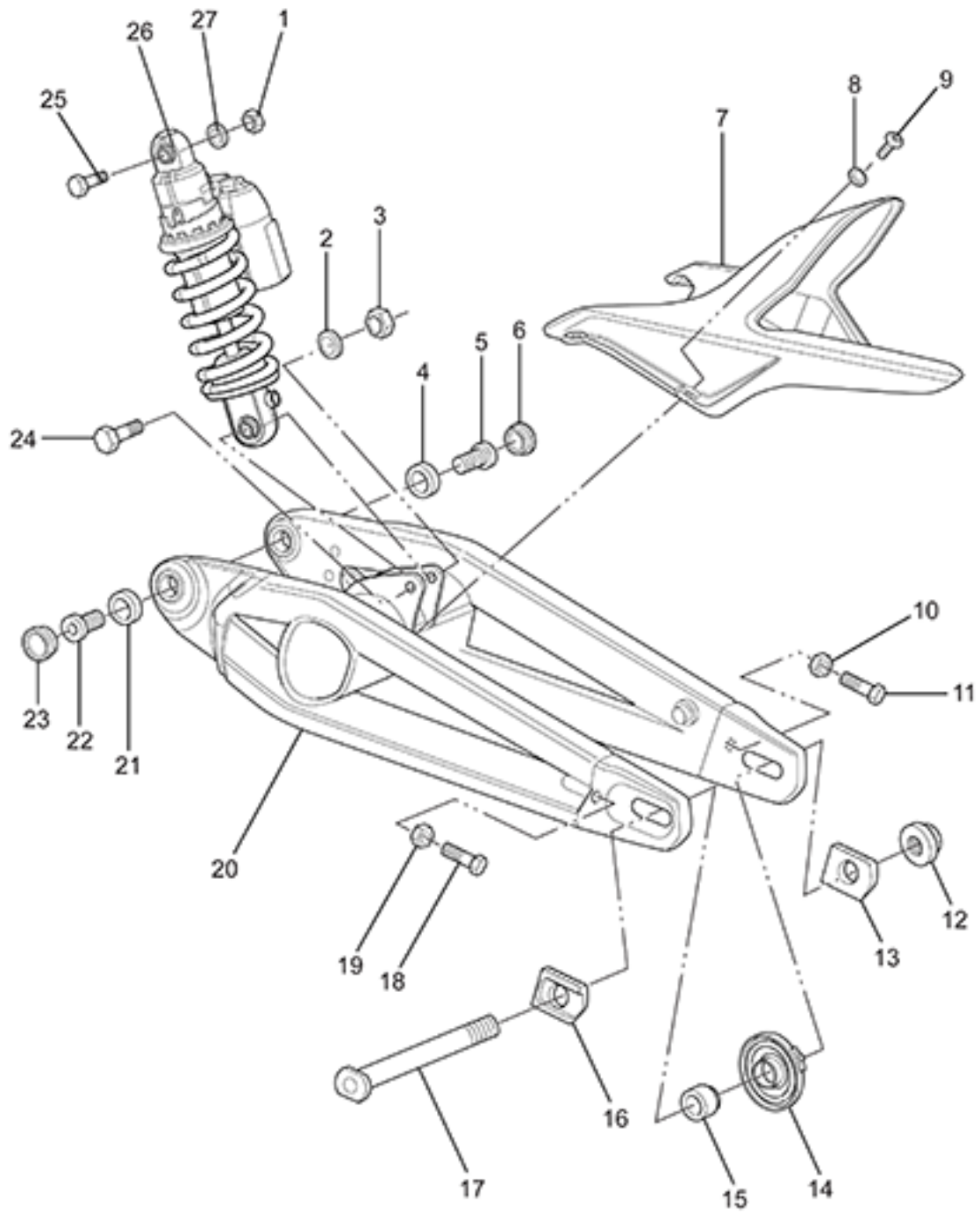
## ZEV0025 - Body Trim

| Callout | Part Number | Part Name   | Qty. per Motorcycle |
|---------|-------------|---|---------------------|
| 1       | 27-08002    | HANDLEBAR END CAP   | 1                   |
| 2       | 27-08057    | MIRROR RH   | 1                   |
| 3       | 27-08056    | MIRROR LH   | 1                   |
| 4       | 27-08083    | HAND GRIP NON-THROTTLE SIDE<br>NOTE: Grip does not have Zero logo. Order with 27-08082 if you want a matching pair.<br>NOTE: Supersedes p/n 27-08007. | 1                   |
| 5       | 27-08002    | HANDLEBAR END CAP   | 1                   |
| 6       | 90-04084    | HEXAGON SOCKET BUTTON HEAD CAP SCREW ISO 7380<br>M5X16-8.8 ZM-F-11 REV 03   | 1                   |
| 7       | 90-04085    | WASHER M5 X 11 X 1 NYLON 6/6 BLACK  | 1                   |
| 8       | 24-08132    | SEAT GAP FILLER RIGHT   | 1                   |
| 9       | 24-08133    | SEAT GAP FILLER LEFT  | 1                   |
| 10      | 90-08005    | SEAT BOLT M8X55<br>NOTE: Supersedes 90-07009.   | 1                   |
| 11      | 27-08025    | SDS SEAT ASSEMBLY MY15<br>NOTE: replaces 24-04854   | 1                   |
| 12      | PA-41       | BOLT  | 1                   |
| 13      | PA-42       | WASHER  | 1                   |
| 14      | 24-04432-1  | SDS TAIL TOP BLACK#2  | 1                   |
| 14      | 24-04439    | SDS TAIL POD TOP<br>NOTE: Top half only. Order bottom half PN: 24-05158   | 1                   |
| 15      | 24-04433-1  | SDS TAIL BOTTOM (BLACK #2)<br>NOTE: Superseded by 24-08099.   | 1                   |
| 16      | 90-05885    | PHILIPS HEAD SHEET METAL SCREW 6 X 1/2  | 1                   |
| 17      | 24-08175-8  | Option #1: ORANGE<br>NOTE: DSR Tank Assembly no longer available in black. Owners should upgrade to 2017 painted bodywork.                            | 1                   |
|         | 24-08175-4  | Option #2: WHITE<br>NOTE: DSR Tank Assembly no longer available in black. Owners should upgrade to 2017 painted bodywork.                             | 1                   |
| 18      | 90-04085    | WASHER M5 X 11 X 1 NYLON 6/6 BLACK  | 1                   |
| 19      | 90-04084    | HEXAGON SOCKET BUTTON HEAD CAP SCREW ISO 7380<br>M5X16-8.8 ZM-F-11 REV 03   | 1                   |
| 20      | 24-08080    | TRUNK PAN RIGHT COMPRESSION ADJUSTER TRIMMED SR   | 1                   |
| 21      | 24-05889    | TRUNK PAN LEFT FOR SIZE 6 CONTROLLER  | 1                   |
| 22      | 24-04439    | SDS TAIL POD TOP<br>NOTE: Top half only. Order bottom half PN: 24-05158   | 1                   |
| 23      | 20-03066    | RIVET PUSH PUSH NYLON M6  | 1                   |
| 24      | 24-07593    | SIZE 6 CONTROLLER FILLER  | 1                   |

|    |  |  |   |
|----|--|--|---|
| 25 | PA-43                                    | NUT  | 1 |
| 26 | PA-44                                    | WASHER   | 1 |
| 27 | 90-02103                                 | WASHER ISO 7089 6-200HV ZM-F-01  | 1 |
| 28 | 90-07281                                 | HEXAGON SOCKET BUTTON HEAD SCREWS ISO 7380<br>M6X12-8.8 ZM-F-01 REV 03 ZM-L-01 REV 01  | 1 |
| 29 | PA-45                                    | BOLT   | 1 |
| 30 | PA-46                                    | BOLT   | 1 |
| 31 | PA-47                                    | BOLT   | 1 |
| 32 | 90-04085                                 | WASHER M5 X 11 X 1 NYLON 6/6 BLACK   | 1 |
| 33 | 90-04084                                 | HEXAGON SOCKET BUTTON HEAD CAP SCREW ISO 7380<br>M5X16-8.8 ZM-F-11 REV 03  | 1 |
| 34 | PA-48                                    | WASHER   | 1 |
| 35 | 24-08157                                 | REAR INNER FENDER<br>NOTE: Supersedes part number 24-04438   | 1 |
| 36 | 24-07674                                 | SDS STUBBY CHIN CENTER   | 1 |
| 37 | 90-04085                                 | WASHER M5 X 11 X 1 NYLON 6/6 BLACK   | 1 |
| 38 | 90-04084                                 | HEXAGON SOCKET BUTTON HEAD CAP SCREW ISO 7380<br>M5X16-8.8 ZM-F-11 REV 03  | 1 |
| 39 | 90-04085                                 | WASHER M5 X 11 X 1 NYLON 6/6 BLACK   | 1 |
| 40 | 90-04084                                 | HEXAGON SOCKET BUTTON HEAD CAP SCREW ISO 7380<br>M5X16-8.8 ZM-F-11 REV 03  | 1 |
| 41 | 24-06684                                 | SDS CHIN FAIRING LEFT<br>NOTE: Please order 80-08012 DECAL/GRAPHIC/MEDALLION<br>GRAPHIC, CRAFTED IN CALIFORNIA JEWEL separately. | 1 |
| 42 | 90-04084                                 | HEXAGON SOCKET BUTTON HEAD CAP SCREW ISO 7380<br>M5X16-8.8 ZM-F-11 REV 03  | 1 |
| 43 | 90-04085                                 | WASHER M5 X 11 X 1 NYLON 6/6 BLACK   | 1 |
| 44 | 90-04084                                 | HEXAGON SOCKET BUTTON HEAD CAP SCREW ISO 7380<br>M5X16-8.8 ZM-F-11 REV 03  | 1 |
| 45 | 90-04084                                 | HEXAGON SOCKET BUTTON HEAD CAP SCREW ISO 7380<br>M5X16-8.8 ZM-F-11 REV 03  | 1 |
| 46 | 90-04085                                 | WASHER M5 X 11 X 1 NYLON 6/6 BLACK   | 1 |
| 47 | 90-04084                                 | HEXAGON SOCKET BUTTON HEAD CAP SCREW ISO 7380<br>M5X16-8.8 ZM-F-11 REV 03  | 1 |
| 48 | 90-04085                                 | WASHER M5 X 11 X 1 NYLON 6/6 BLACK   | 1 |
| 49 | 90-04085                                 | WASHER M5 X 11 X 1 NYLON 6/6 BLACK   | 1 |
| 50 | <i>Not Applicable to this Bike Model</i> |  |   |
| 51 | <i>Not Applicable to this Bike Model</i> |  |   |
| 52 | 24-08070                                 | FORK GUARD LEFT  | 1 |
| 53 | 90-07292                                 | HEXAGON SOCKET BUTTON HEAD CAP SCREW ISO 7380<br>M5X16-8.8 ZM-F-11 REV 01 ZM-L-01 REV 01<br>NOTE: Does not apply to DS           | 1 |
| 54 | 90-04085                                 | WASHER M5 X 11 X 1 NYLON 6/6 BLACK   | 1 |
| 55 | 24-08069                                 | FORK GUARD RIGHT   | 1 |
| 56 | <i>Not Applicable to this Bike Model</i> |  |   |

|    |  |  |   |
|----|--|--|---|
| 57 | <i>Not Applicable to this Bike Model</i> |  |   |
| 58 | 90-07292                                 | HEXAGON SOCKET BUTTON HEAD CAP SCREW ISO 7380<br>M5X16-8.8 ZM-F-11 REV 01 ZM-L-01 REV 01<br>NOTE: Does not apply to DS   | 1 |
| 59 | 90-02107                                 | WASHER ISO 7093-1 5-200HV ZM-F-01<br>NOTE: Does not apply to S and SR  | 1 |
| 60 | <i>Not Applicable to this Bike Model</i> |  |   |
| 61 | 24-04437-2                               | DS/X/MX FRONT FENDER XMX BLACK#1<br>NOTE: Does not apply to S and SR   | 1 |
| 62 | 24-08235                                 | SDS CHIN FAIRING RIGHT<br>NOTE: Please order 80-08012 DECAL/GRAPHIC/MEDALLION GRAPHIC, CRAFTED IN CALIFORNIA JEWEL separately.   | 1 |
| 63 | 24-04428                                 | SDS FAIRING FRONT CENTER BLACK#2   | 1 |
| 64 | 90-05885                                 | PHILIPS HEAD SHEET METAL SCREW 6 X 1/2   | 1 |
| 65 | 24-08177-8                               | Option #1: ORANGE<br>NOTE: DSR Power Tank Assembly no longer available in black.<br>Owners should upgrade to 2017 painted bodywork.  | 1 |
|    | 24-08177-4                               | Option #2: WHITE<br>NOTE: DSR Power Tank Assembly no longer available in black.<br>Owners should upgrade to 2017 painted bodywork.   | 1 |
| 66 | 24-08092                                 | HEADLIGHT MOUNT LEFT FOR ABS   | 1 |
| 67 | 90-04084                                 | HEXAGON SOCKET BUTTON HEAD CAP SCREW ISO 7380<br>M5X16-8.8 ZM-F-11 REV 03  | 1 |
| 68 | 90-04085                                 | WASHER M5 X 11 X 1 NYLON 6/6 BLACK   | 1 |
| 69 | 24-08091                                 | HEADLIGHT MOUNT RIGHT FOR ABS  | 1 |
| 70 | 27-08034                                 | 12V ACCESSORY COVER, SMALL   | 1 |
| 71 | 10-07504                                 | 12V ACCESSORY SOCKET KIT - SDS<br>NOTE: Charge a GPS, smart phone or mp3 player using the Zero Motorcycles 12V Accessory Socket Kit. Designed to connect directly to your motorcycle's power port harness, the accessory socket enables you to charge small devices that have a cigarette lighter plug. The accessory outlet is rated up to 10 amps/120 watts. This kit includes all mounting hardware for installation on the 2014 and later Zero S, Zero DS and Zero SR motorcycles.<br>NOTE: 2014 [Zero SR, Zero S, Zero DS] 2015 [Zero SR, Zero S, Zero DS] 2016-2018 [Zero SR, Zero S, Zero DS, Zero DSR] | 1 |
| 72 | 90-07265                                 | HEXAGON SOCKET HEAD CAP SCREW ISO 4762 M6X20-8.8<br>ZM-F-01 REV 03 ZM-L-01 REV 01  | 1 |
| 73 | 24-02961                                 | MIRROR MOUNT CLAMP   | 1 |
| 74 | 26-08060                                 | MIRROR LH MOUNT LOW PROFILE<br>NOTE: Bottom part of the mirror mount LH  | 1 |
| 75 | 27-08082                                 | HAND GRIP THROTTLE SIDE<br>NOTE: Grip does not have Zero logo. Order with 27-08083 if you want a matching pair.<br>NOTE: Supersedes p/n 27-08006.  | 1 |

ZEV0026 - Rear Suspension



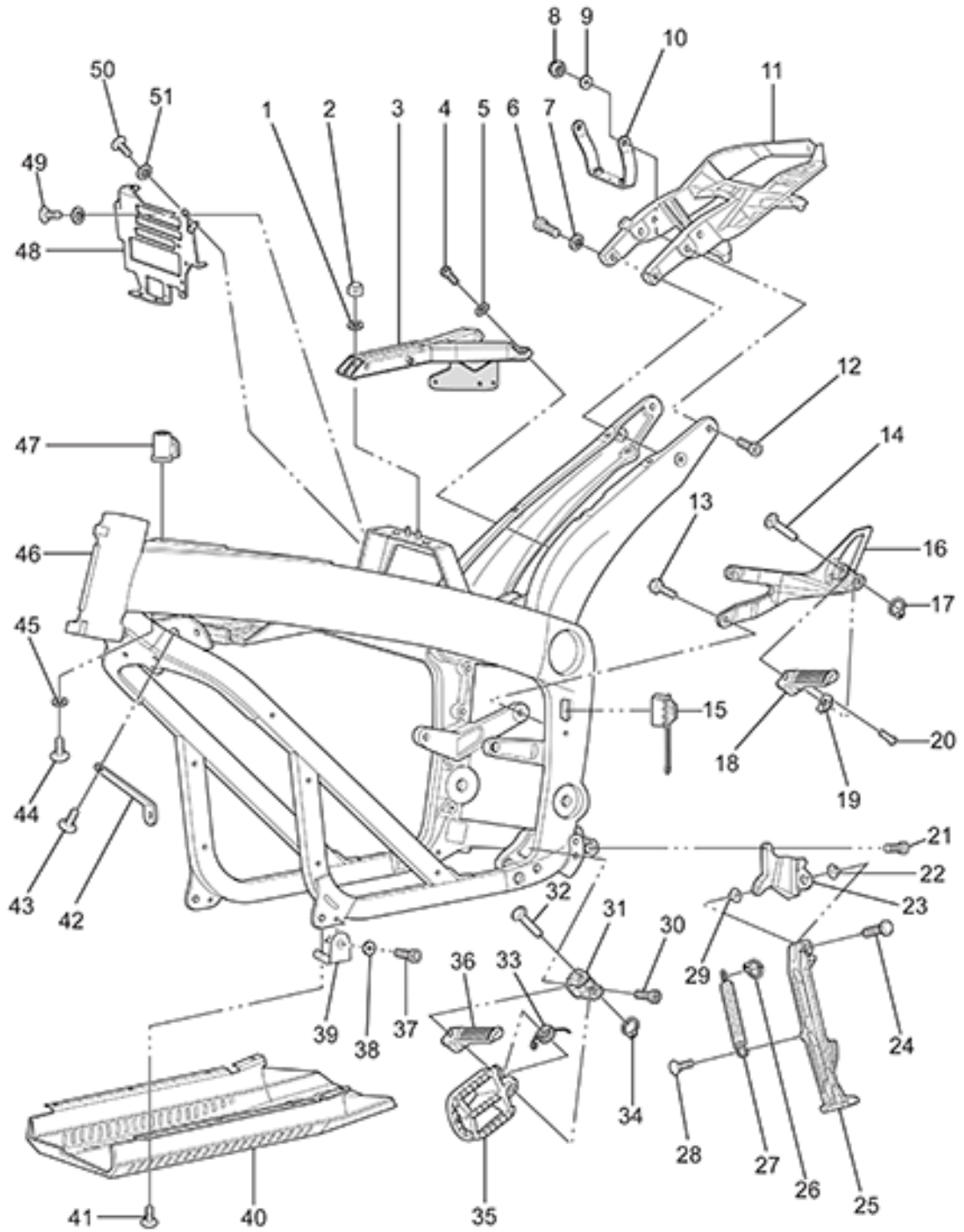
ZEV0026 - Rear Suspension

| Callout | Part Number | Part Name  | Qty. per Motorcycle |
|---------|-------------|--|---------------------|
| 1       | 90-02050    | PREVAILING TORQUE TYPE NUT DIN 985 M10-08 ZM-F-01  | 1                   |
| 2       | 90-02100    | WASHER ISO 7089 10-200 HV ZM-F-01  | 1                   |
| 3       | 90-02050    | PREVAILING TORQUE TYPE NUT DIN 985 M10-08 ZM-F-01  | 1                   |
| 4       | 20-06138    | BEARING 6204<br>NOTE: Bearing used as swing arm bearing in some models and as the wheel bearing (qty of 5; 2 in front and three in rear wheel) in 2015 and later models.<br>NOTE: Manufacturer part number is 6204-2RS | 1                   |
| 5       | 20-06130    | STUB AXLE  | 1                   |
| 6       | 20-06937    | SDS STUB-PIVOT COVER   | 1                   |
| 7       | 24-04438    | REAR INNER FENDER<br>NOTE: Superseded by 24-08157  | 1                   |
| 8       | 90-04085    | WASHER M5 X 11 X 1 NYLON 6/6 BLACK   | 1                   |
| 9       | 90-02109    | HEXAGON SOCKET BUTTON HEAD CAP SCREW ISO 7380 M5X12-8.8 ZM-F-01  | 1                   |
| 10      | 90-05088    | HEXAGON FLANGE NUT DIN 6923 M8-1.25 ZM-F-01 REV 03<br>NOTE: Axle adjusters jam nut   | 1                   |
| 11      | 90-03030    | HEXAGON HEAD SCREW DIN 933 M8X40-10.9 ZM-F-01 REV 03   | 1                   |
| 12      | 90-05678    | U-NUT M20X1.5 FLANGE 27S 15H<br>NOTE: Rear Axle Nut  | 1                   |
| 13      | 20-04738    | REAR AXLE ADJUSTER PUSH BLOCK, NUT SIDE  | 1                   |
| 14      | 45-07496    | MPI WHEEL SPEED SENSOR   | 1                   |
| 15      | 23-07489    | WHEEL SPACER DRIVE SIDE REAR   | 1                   |
| 16      | 20-04737    | REAR AXLE ADJUSTER PUSH BLOCK, HEAD SIDE   | 1                   |
| 17      | 23-04736    | AXLE 20MM HOLLOW<br>NOTE: Superseeded by pn:23-08032   | 1                   |
| 18      | 90-03030    | HEXAGON HEAD SCREW DIN 933 M8X40-10.9 ZM-F-01 REV 03   | 1                   |
| 19      | 90-05088    | HEXAGON FLANGE NUT DIN 6923 M8-1.25 ZM-F-01 REV 03<br>NOTE: Axle adjusters jam nut   | 1                   |
| 20      | 21-07747    | S SWINGARM   | 1                   |
| 21      | 20-06138    | BEARING 6204<br>NOTE: Bearing used as swing arm bearing in some models and as the wheel bearing (qty of 5; 2 in front and three in rear wheel) in 2015 and later models.<br>NOTE: Manufacturer part number is 6204-2RS | 1                   |
| 22      | 20-06130    | STUB AXLE  | 1                   |
| 23      | 20-06937    | SDS STUB-PIVOT COVER   | 1                   |
| 24      | 90-05711    | LOWER SHOCK EYE BOLT M10-1.5X60MM  | 1                   |

|    |          |                                   |   |
|----|----------|-----------------------------------|---|
| 25 | 90-05711 | LOWER SHOCK EYE BOLT M10-1.5X60MM | 1 |
| 26 | 22-05882 | DS SHOCK 40MM                     | 1 |
| 27 | 90-02100 | WASHER ISO 7089 10-200 HV ZM-F-01 | 1 |



ZEV0027 - Frame(Left)





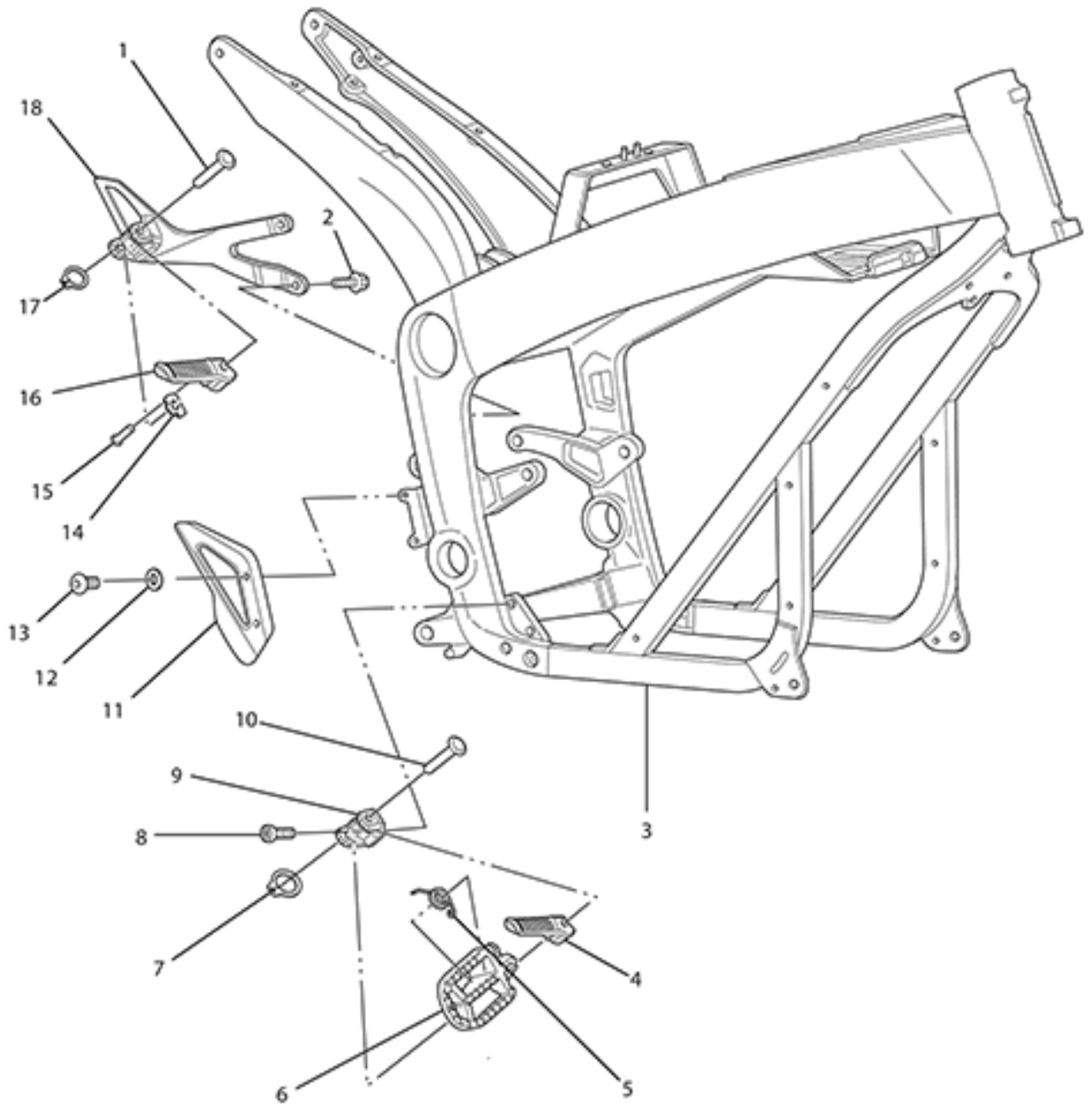
## ZEV0027 - Frame(Left)

| Callout | Part Number                              | Part Name   | Qty. per Motorcycle |
|---------|--|---|---------------------|
| 1       | 90-02103                                 | WASHER ISO 7089 6-200HV ZM-F-01   | 1                   |
| 2       | 90-02054                                 | PREVAILING TORQUE TYPE NUT DIN 985 M6-08 ZM-F-01  | 1                   |
| 3       | 21-06979                                 | SDS SEAT FRAME WITH FUSEPANEL MOUNT   | 1                   |
| 4       | 90-02122                                 | HEXAGON SOCKET BUTTON HEAD CAP SCREW ISO 7380<br>M6X16-8.8 ZM-F-01 REV 03                   | 1                   |
| 5       | 90-02103                                 | WASHER ISO 7089 6-200HV ZM-F-01   | 1                   |
| 6       | <i>Not Applicable to this Bike Model</i> |   |                     |
| 7       | 90-02104                                 | WASHER ISO 7089 -8-200 HV ZM-F-01   | 1                   |
| 8       | 90-03236                                 | PREVAILING TORQUE TYPE NUT DIN 985 M8-10 ZM-F-01  | 1                   |
| 9       | 90-02104                                 | WASHER ISO 7089 -8-200 HV ZM-F-01   | 1                   |
| 10      | 20-05897                                 | HEATSINK SUPPORT  | 1                   |
| 11      | 20-05883                                 | SR TAIL FRAME   | 1                   |
| 12      | 90-08005                                 | SEAT BOLT M8X55<br>NOTE: Supersedes 90-07009.   | 1                   |
| 13      | 90-07284                                 | HEX FLANGE BOLT M8X25   | 1                   |
| 14      | 90-02725                                 | CLEVIS PIN CUSTOM 10MM X 45L  | 1                   |
| 15      | 45-04864                                 | AC CHARGE INLET COVER   | 1                   |
| 16      | 20-04285                                 | SDS PASSENGER PEG BRKT L  | 1                   |
| 17      | 90-02879                                 | RETAINING RING 9MM SHAFT DIN 471  | 1                   |
| 18      | 20-04285                                 | SDS PASSENGER PEG BRKT L  | 1                   |
| 19      | 20-04279                                 | FOOTPEG DETENT PLATE  | 1                   |
| 20      | 20-05404                                 | FOOTPEG DETENT BALL MECHANISM   | 1                   |
| 21      | 90-07277                                 | HEXAGON SOCKET THIN HEAD CAP SCREW DIN 7984<br>M10X25-8.8 ZM-F-01 REV 03 ZM-L-01 REV 01     | 1                   |
| 22      | 90-02800                                 | BUSHING FLANGE 0.375  | 1                   |
| 23      | 20-06590                                 | KICKSTAND MOUNT   | 1                   |
| 24      | 90-02799                                 | CLEVIS PIN CUSTOM<br>NOTE: Used to attach kickstand leg to mount.                           | 1                   |
| 25      | 20-05661                                 | MEDIUM KICKSTAND LEG W/MAGNET   | 1                   |
| 26      | 90-02837                                 | E CLIP 0.375  | 1                   |
| 27      | 90-08219                                 | SIDESTAND SPRING OUTER STAINLESS PASSIVATED   | 1                   |
| 28      | 90-07261                                 | HEXAGON SOCKET COUNTERSUNK HEAD SCREW ISO<br>10642 M8X20-10.9 ZM-F-01 REV 03 ZM-L-01 REV 01 | 1                   |
| 29      | 90-02800                                 | BUSHING FLANGE 0.375  | 1                   |
| 30      | 90-07277                                 | HEXAGON SOCKET THIN HEAD CAP SCREW DIN 7984<br>M10X25-8.8 ZM-F-01 REV 03 ZM-L-01 REV 01     | 1                   |
| 31      | 20-02723                                 | CLEVIS FOOT PEG UNIVERSAL LEFT  | 1                   |
| 32      | 90-02725                                 | CLEVIS PIN CUSTOM 10MM X 45L  | 1                   |
| 33      | 20-02727                                 | TORSION SPRING, .678 OD .078 WIRE, CCW  | 1                   |
| 34      | 90-02879                                 | RETAINING RING 9MM SHAFT DIN 471  | 1                   |

|    |  |  |   |
|----|--|--|---|
| 35 | 20-02548                                 | FOOTPEG, LEFT  | 1 |
| 36 | <i>Not Applicable to this Bike Model</i> |  |   |
| 37 | 90-07288                                 | HEXAGON SOCKET HEAD CAP SCREW ISO 4762 M5X12-8.8<br>ZM-F-01 REV 03 ZM-L-01 REV 01  | 1 |
| 38 | PA-51                                    | M5 FLAT WASHER   | 1 |
| 39 | 20-05307                                 | SKID PAN BRACKET   | 1 |
| 40 | 26-08051                                 | SKID PLATE DS<br>NOTE: Aluminum (5052-H32) skid plate used on Zero DS, Zero DSR and other SDS motorcycles in the authority configuration. Also used with the consumer drop bars, it is compatible with the Zero S and Zero SR.<br>NOTE: Supersedes part number 20-05126. | 1 |
| 41 | 90-02109                                 | HEXAGON SOCKET BUTTON HEAD CAP SCREW ISO 7380<br>M5X12-8.8 ZM-F-01   | 1 |
| 42 | 20-07073                                 | SDS FRAME MOUNTED HORN BRACKET   | 1 |
| 43 | 90-02128                                 | HEXAGON SOCKET BUTTON HEAD CAP SCREW ISO 7380<br>M8X20-8.8 ZM-F-01 REV 03  | 1 |
| 44 | 90-07281                                 | HEXAGON SOCKET BUTTON HEAD SCREWS ISO 7380<br>M6X12-8.8 ZM-F-01 REV 03 ZM-L-01 REV 01  | 1 |
| 45 | 90-02103                                 | WASHER ISO 7089 6-200HV ZM-F-01  | 1 |
| 46 | 26-08128                                 | SR MAIN FRAME<br>NOTE: Must supply VIN# and Warranty Claim# when ordering.<br>NOTE: Also for DSR Main frame  | 1 |
| 47 | 20-05202                                 | KEYSWITCH LOCK AND TANK BAG LOCK COMBO KIT<br>NOTE: This Kit includes an ignition lock (45-02692) and a tank bag/helmet lock (p/n 20-05044) that have been keyed alike with two keys.  | 1 |
| 48 | 20-07736                                 | ELECTRICAL PANEL MOUNT PLATE<br>NOTE: Superseded by 26-08120.  | 1 |
| 49 | PA-52                                    | ELECTRICAL BRACKET BOLT HEX HEAD M5 - 0.80 X 12MM  | 1 |
| 50 | PA-53                                    | ELECTRICAL BRACKET BOLT HEX HEAD M5 - 0.80 X 12MM  | 1 |
| 51 | PA-54                                    | ELECTRICAL PANEL BOLT WASHER, M5 FLAT WASHER   | 1 |

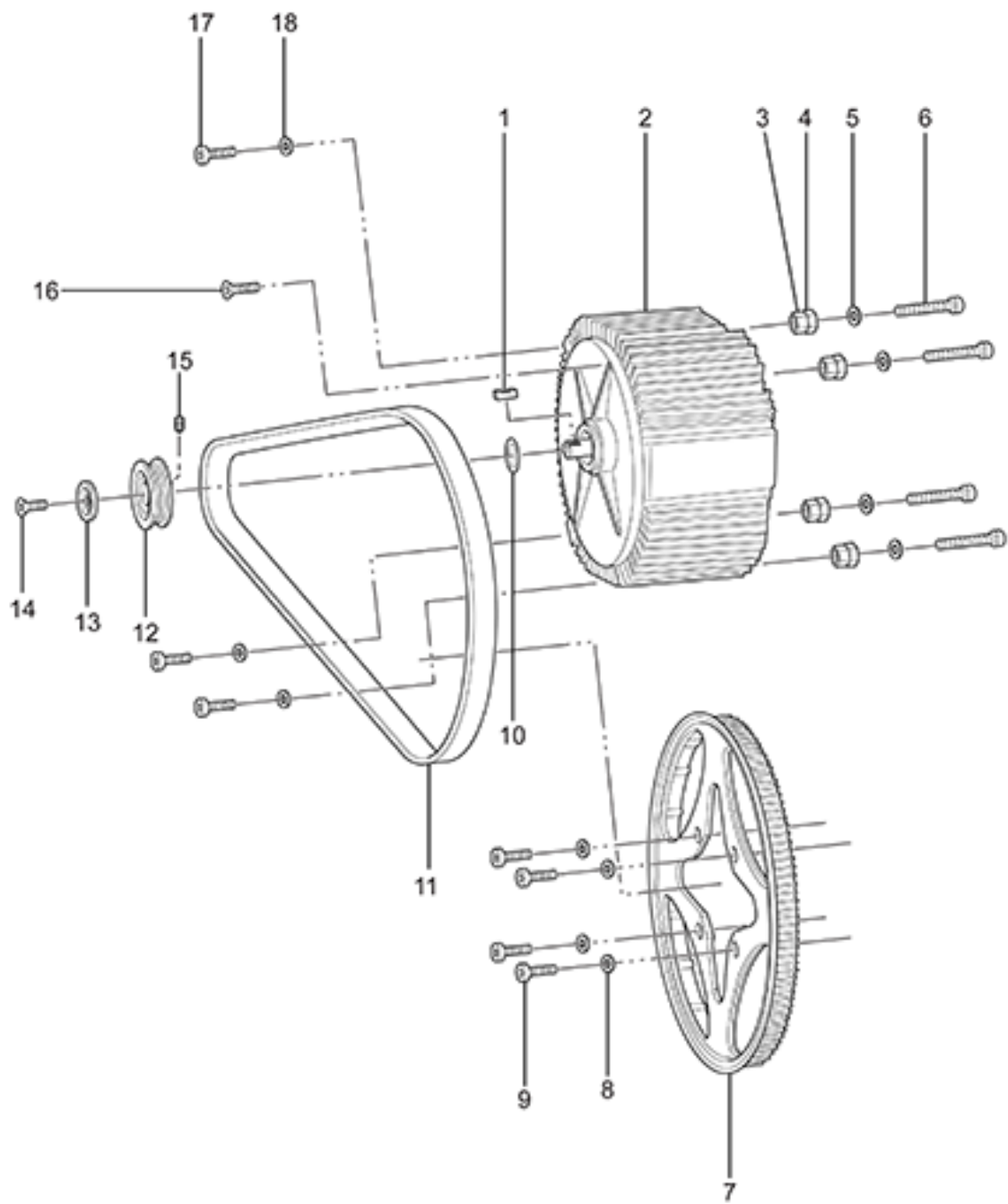


ZEV0028 - Frame(Right)



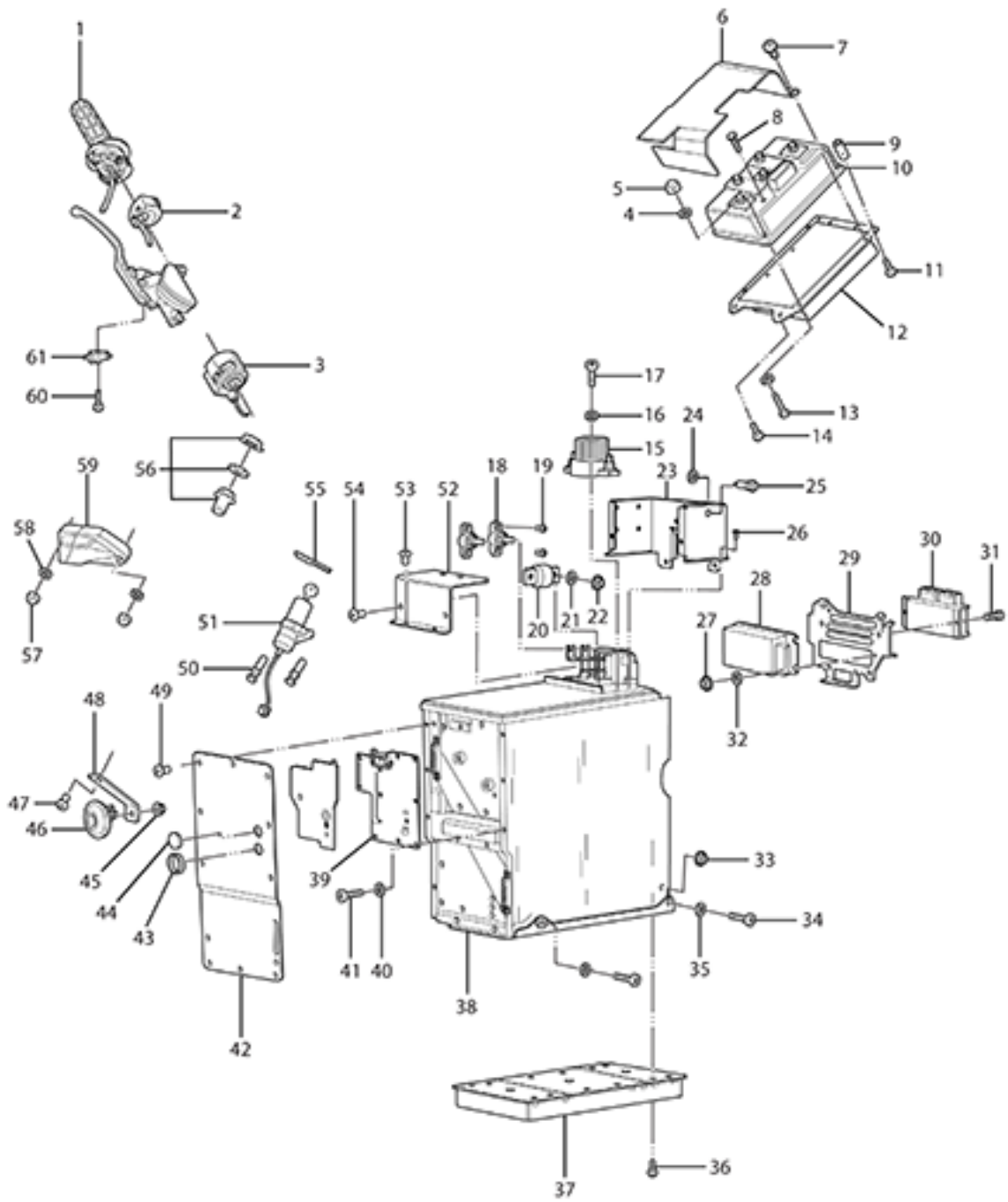
## ZEV0028 - Frame(Right)

| Callout | Part Number                              | Part Name   | Qty. per Motorcycle |
|---------|--|---|---------------------|
| 1       | 90-02725                                 | CLEVIS PIN CUSTOM 10MM X 45L  | 1                   |
| 2       | 90-07284                                 | HEX FLANGE BOLT M8X25   | 1                   |
| 3       | 26-08128                                 | SR MAIN FRAME<br>NOTE: Must supply VIN# and Warranty Claim# when ordering.<br>NOTE: Also for DSR Main frame | 1                   |
| 4       | <i>Not Applicable to this Bike Model</i> |   |                     |
| 5       | 20-02727                                 | TORSION SPRING, .678 OD .078 WIRE, CCW  | 1                   |
| 6       | 20-02549                                 | FOOTPEG, RIGHT<br>NOTE: Does not apply to S and SR  | 1                   |
| 7       | 90-02879                                 | RETAINING RING 9MM SHAFT DIN 471  | 1                   |
| 8       | 90-07277                                 | HEXAGON SOCKET THIN HEAD CAP SCREW DIN 7984<br>M10X25-8.8 ZM-F-01 REV 03 ZM-L-01 REV 01                     | 1                   |
| 9       | 20-02724                                 | CLEVIS FOOT PEG UNIVERSAL RIGHT   | 1                   |
| 10      | 90-02725                                 | CLEVIS PIN CUSTOM 10MM X 45L  | 1                   |
| 11      | 25-07457                                 | MASTER CYLINDER GUARD FOR J-JUAN MASTER CYLINDER  | 1                   |
| 12      | 90-02103                                 | WASHER ISO 7089 6-200HV ZM-F-01   | 1                   |
| 13      | 90-07323                                 | HEXAGON SOCKET BUTTON HEAD CAP SCREW ISO 7380<br>M6X25-8.8 ZM-F-01 REV 03 ZM-L-01 REV 01                    | 1                   |
| 14      | 20-04279                                 | FOOTPEG DETENT PLATE  | 1                   |
| 15      | 20-05404                                 | FOOTPEG DETENT BALL MECHANISM   | 1                   |
| 16      | 27-08038                                 | PASSENGER FOOTPEG RIGHT SIDE  | 1                   |
| 17      | 90-02879                                 | RETAINING RING 9MM SHAFT DIN 471  | 1                   |
| 18      | 20-07604                                 | SDS AND FX PASSENGER PEG BRKT R   | 1                   |



ZEV0029 - Motor and Drive System

| Callout | Part Number | Part Name   | Qty. per Motorcycle |
|---------|-------------|---|---------------------|
| 1       | 30-06745    | SHAFT KEY .25 MOTOR SPROCKET<br>NOTE: Motor Sprocket  | 1                   |
| 2       | 12-08042    | ZF75-7 R IPM 28T MOTOR KIT  | 1                   |
| 3       | 90-04783    | HEXAGON NUT ISO 4033 M14-2 ZM-F-01 REV 03   | 1                   |
| 4       | 20-04774    | MOTOR JACK SCREW INNER  | 1                   |
| 5       | 90-02104    | WASHER ISO 7089 -8-200 HV ZM-F-01   | 1                   |
| 6       | 90-05179    | HEXAGON SOCKET HEAD CAP SCREW ISO 4762 M8X60-8.8<br>ZM-F-01 REV 03  | 1                   |
| 7       | 30-08034    | WHEEL SPROCKET 130T 8MM PITCH FINISHED  | 1                   |
| 8       | 90-02104    | WASHER ISO 7089 -8-200 HV ZM-F-01   | 1                   |
| 9       | 90-07289    | HEXAGON SOCKET THIN HEAD CAP SCREW DIN 7984<br>M8X30-8.8 ZM-F-01 REV 03 ZM-L-01 REV 01<br>NOTE: THIN HEAD CAP SCREW DIN 7984 M8X30-8.8                        | 1                   |
| 10      | 30-05502    | MOTOR SHAFT SPACER 1.5 MM FOR 1" SHAFT  | 1                   |
| 11      | 30-08084    | BELT DRIVE, 220T, 8MM PITCH, 14MM WIDE, NEW LOGO  | 1                   |
| 12      | 30-03657    | SPROCKET FRONT, BELT DRIVE 28T, 8MM PITCH, 15MM<br>WIDE 1" BORE<br>NOTE: Does not apply to SR   | 1                   |
| 13      | 20-05453    | LOW PROFILE BELT SPROCKET MOTOR SHAFT TOPHAT  | 1                   |
| 14      | 90-02056    | HEXAGON SOCKET COUNTERSUNK HEAD SCREW<br>M10X25-8.8 MOTOR SHAFT<br>NOTE: Bolt used to hold front sprocket in place onto the motor<br>shaft.<br>NOTE: Sprocket | 1                   |
| 15      | 90-07298    | HEXAGON SOCKET SET SCREW CUP POINT KNURLED ISO<br>4029 TYPE V M4X6 ZM-F-01 REV 03 ZM-L-01 REV 01<br>NOTE: 2 set screws are needed for an SR motor.            | 1                   |
| 16      | 90-08037    | HEXALOBULAR (6 LOBE) SOCKET FLAT HEAD<br>COUNTERSUNK SCREW ISO 14582 M8X30-10.9 ZM-F-01 REV<br>04   | 1                   |
| 17      | 90-02096    | MOTOR MOUNTING LEFT FRONT TOP AND LEFT FRONT<br>BOTTOM BOLT   | 1                   |
| 18      | 90-02104    | WASHER ISO 7089 -8-200 HV ZM-F-01   | 1                   |





| Callout | Part Number                              | Part Name  | Qty. per Motorcycle |
|---------|--|--|---------------------|
| 1       | 45-08039                                 | THROTTLE BITRON HALL EFFECT PCB<br>NOTE: Supersedes 27-08000   | 1                   |
| 2       | 40-06054                                 | KILL MODE START SWITCH   | 1                   |
| 3       | 60-07780                                 | LEFT HAND SWITCHGEAR ECIE  | 1                   |
| 4       | 90-02103                                 | WASHER ISO 7089 6-200HV ZM-F-01  | 1                   |
| 5       | 90-02071                                 | HEXAGON NUT ISO 4032 M6-8 ZM-F-01 REV 02   | 1                   |
| 6       | 24-08067                                 | BODYWORK MISC #6 CONTROLLER UN-SHIELDED COVER  | 1                   |
| 7       | 90-06250                                 | CONTROLLER FORMEX PAN HEAD PHILLIPS #6 SHEET<br>METAL SCREW  | 1                   |
| 8       | 90-07063                                 | CONTROLLER LEAD BOLTS M8X16  | 1                   |
| 9       | <i>Not Applicable to this Bike Model</i> |  |                     |
| 10      | 60-07008                                 | CONTROLLER SIZE 6 GEN 4 SEVCON   | 1                   |
| 11      | 90-05179                                 | HEXAGON SOCKET HEAD CAP SCREW ISO 4762 M8X60-8.8<br>ZM-F-01 REV 03   | 1                   |
| 12      | 30-08067                                 | R CONTROLLER HEATSINK  | 1                   |
| 13      | 90-03251                                 | HEXAGON SOCKET HEAD CAP SCREW ISO 4762 M6X30-8.8<br>ZM-F-01  | 1                   |
| 14      | 90-07268                                 | HEXAGON SOCKET HEAD CAP SCREW ISO 4762 M8X25-10.9<br>ZM-F-01 REV 03 ZM-L-01 REV 01   | 1                   |
| 15      | 60-06705                                 | CONTACTOR GIGAVAC GX11 12/40VDC COIL   | 1                   |
| 16      | 90-02101                                 | WASHER ISO 7089 5-200HV ZM-F-01  | 1                   |
| 17      | 90-07129                                 | HEXAGON SOCKET BUTTON HEAD SCREW ISO 7380<br>M5X30-8.8 ZM-F-01 ZM-L-02   | 1                   |
| 18      | 45-08058                                 | JUNCTION POST SMALL TRIMMED  | 1                   |
| 19      | 90-07125                                 | HEXAGON SOCKET BUTTON HEAD SCREW ISO 7380 M5X10  | 1                   |
| 20      | 45-05224                                 | FUSE 300A 160VDC CLASS T   | 1                   |
| 21      | 90-02100                                 | WASHER ISO 7089 10-200 HV ZM-F-01  | 1                   |
| 22      | <i>Not Applicable to this Bike Model</i> |  |                     |
| 23      | <i>Not Applicable to this Bike Model</i> |  |                     |
| 24      | 40-07614                                 | ASSY BATTERY SDS 4-MOD 15MY IMPL<br>NOTE: Superseded by part number 46-08034.  | 1                   |
| 25      | PA-225                                   | LV FUSE HOLDER   | 1                   |
| 26      | PA-226                                   | BATTERY BOX SCREW  | 1                   |
| 27      | 90-02054                                 | PREVAILING TORQUE TYPE NUT DIN 985 M6-08 ZM-F-01   | 1                   |
| 28      | 60-07190                                 | DC-DC CONV 500W SEVCON 622-11211 ABS UNITS   | 1                   |
| 29      | 20-07736                                 | ELECTRICAL PANEL MOUNT PLATE<br>NOTE: Superseded by 26-08120.  | 1                   |
| 30      | 40-07671                                 | ASSY MBB GENERIC 15MY IMPL<br>NOTE: NOTE: Need to provide motorcycle VIN in shipping notes.<br>NOTE: If 11kW please order 40-08074 | 1                   |

|    |  |  |   |
|----|--|--|---|
| 31 | 90-02515                                 | HEXAGON SOCKET HEAD CAP SCREW ISO 4762 M4X12-8.8<br>ZM-F-01 REV 03   | 1 |
| 32 | 90-02103                                 | WASHER ISO 7089 6-200HV ZM-F-01  | 1 |
| 33 | 90-03236                                 | PREVAILING TORQUE TYPE NUT DIN 985 M8-10 ZM-F-01   | 1 |
| 34 | 90-02098                                 | HEXAGON SOCKET HEAD CAP SCREW ISO 4762 M8X40-8.8<br>ZM-F-01 REV 02   | 1 |
| 35 | 90-02104                                 | WASHER ISO 7089 -8-200 HV ZM-F-01  | 1 |
| 36 | 90-02109                                 | HEXAGON SOCKET BUTTON HEAD CAP SCREW ISO 7380<br>M5X12-8.8 ZM-F-01   | 1 |
| 37 | 45-08253                                 | ONBOARD CHARGER 1300W<br>NOTE: Current design includes additional ferrite. Please contact<br>Zero Motorcycles Service Team if you need additional guidance<br>on routing.<br>NOTE: Supersedes 45-08123 and 45-08234.   | 1 |
| 38 | 46-08227                                 | ASSEMBLY BATTERY MONOLITH ZF14.4<br>NOTE: Motorcycle VIN#, Case# or Claim# must be provided<br>when ordering<br>NOTE: 2014 - FOR INSTALLING IN 2014 MODELS, INCLUDE<br>12-08080 IN THE ORDER. IN CASE OF THE BIKE HAVING A<br>POWER TANK, ALSO INCLUDE 12-08011<br>NOTE: 2013 -FOR INSTALLING IN 2013 MODELS, INCLUDE<br>TO ORDER 12-08057 | 1 |
| 39 | 40-08031                                 | BMS PCB ASSY POTTED 17MY IMPL<br>NOTE: PLEASE INCLUDE VIN# OF BIKE AND BATTERY<br>SERIAL # FOR PROGRAMMING PURPOSES<br>NOTE: FOR FX/FXP, IF BATTERY SERIAL NUMBER STARTS<br>WITH 14SG**** PLEASE ORDER 41-06419  | 1 |
| 40 | 90-02102                                 | WASHER ISO 7089 4-200HV ZM-F-01  | 1 |
| 41 | 90-07127                                 | HEXAGON SOCKET HEAD CAP SCREW ISO 4762 M4X5-8.8<br>ZM-F-01 REV 03 ZM-L-02 REV 01   | 1 |
| 42 | <i>Not Applicable to this Bike Model</i> |  |   |
| 43 | 20-04094                                 | PLUG DIAG PORT 24.50 THRU 26.00 MM 12MY IMPL   | 1 |
| 44 | 80-08003                                 | BATTERY FRONT UPPER FILLER PLUG  | 1 |
| 45 | 90-02054                                 | PREVAILING TORQUE TYPE NUT DIN 985 M6-08 ZM-F-01   | 1 |
| 46 | 45-06774                                 | DISC HORN K70/H12 V WITH BLACK ZINC  | 1 |
| 47 | 90-02128                                 | HEXAGON SOCKET BUTTON HEAD CAP SCREW ISO 7380<br>M8X20-8.8 ZM-F-01 REV 03  | 1 |
| 48 | 20-07073                                 | SDS FRAME MOUNTED HORN BRACKET   | 1 |
| 49 | 90-07124                                 | HEXAGON SOCKET BUTTON HEAD SCREW ISO 7380<br>M5X6-8.8  | 1 |
| 50 | 90-02937                                 | M8X14MM BREAK AWAY HEX BOLT<br>NOTE: One Time Use Bolt   | 1 |
| 51 | 20-05202                                 | KEYSWITCH LOCK AND TANK BAG LOCK COMBO KIT<br>NOTE: This Kit includes an ignition lock (45-02692) and a tank<br>bag/helmet lock (p/n 20-05044) that have been keyed alike with<br>two keys.  | 1 |

|    |  |  |   |
|----|--|--|---|
| 52 | <i>Not Applicable to this Bike Model</i> |  |   |
| 53 | 90-07124                                 | HEXAGON SOCKET BUTTON HEAD SCREW ISO 7380<br>M5X6-8.8  | 1 |
| 54 | 90-07124                                 | HEXAGON SOCKET BUTTON HEAD SCREW ISO 7380<br>M5X6-8.8  | 1 |
| 55 | 20-07062                                 | SDS TRIPLE CLAMP HARNESS SUPPORT   | 1 |
| 56 | 10-07504                                 | <p>12V ACCESSORY SOCKET KIT - SDS</p> <p>NOTE: Charge a GPS, smart phone or mp3 player using the Zero Motorcycles 12V Accessory Socket Kit. Designed to connect directly to your motorcycle{###}'s power port harness, the accessory socket enables you to charge small devices that have a cigarette lighter plug. The accessory outlet is rated up to 10 amps/120 watts. This kit includes all mounting hardware for installation on the 2014 and later Zero S, Zero DS and Zero SR motorcycles.</p> <p>NOTE: 2014 [Zero SR, Zero S, Zero DS] 2015 [Zero SR, Zero S, Zero DS] 2016-2018 [Zero SR, Zero S, Zero DS, Zero DSR]</p> | 1 |
| 57 | 90-02054                                 | PREVAILING TORQUE TYPE NUT DIN 985 M6-08 ZM-F-01   | 1 |
| 58 | 90-02103                                 | WASHER ISO 7089 6-200HV ZM-F-01  | 1 |
| 59 | 40-08156                                 | DASH LCD<br>NOTE: Supersedes 40-08119  | 1 |
| 60 | PA-220                                   | BRAKE LIGHT SWITCH SCREW   | 1 |
| 61 | PA-221                                   | BRAKE LIGHT SWITCH<br>NOTE: Not sold separately. Please order the Master Cylinder.   | 1 |