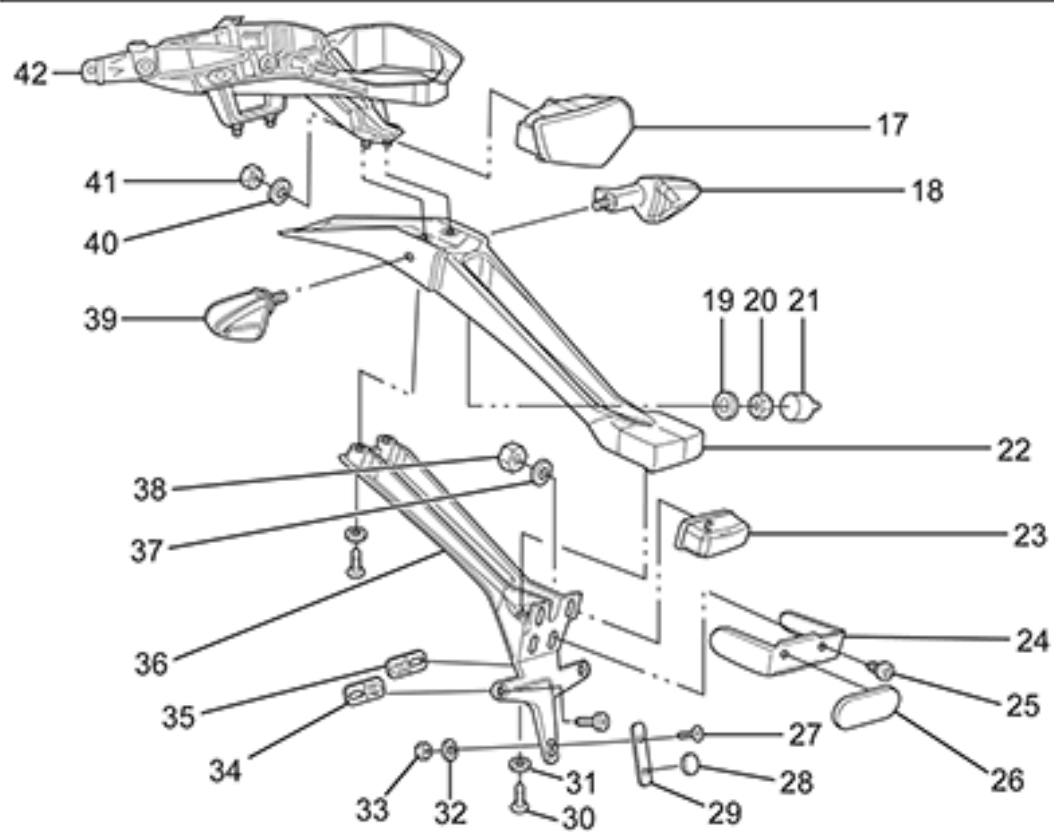
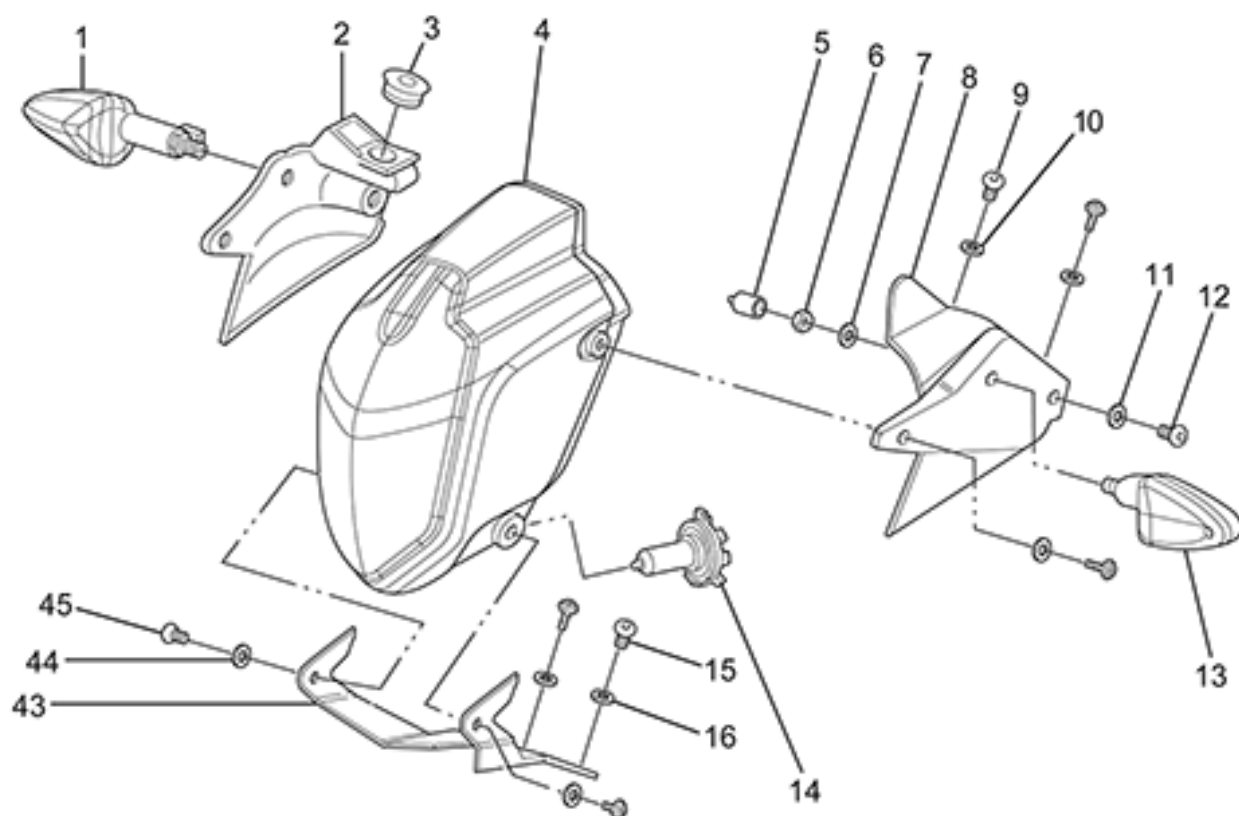


Zero Motocycles
SR 2015 Exploded Views

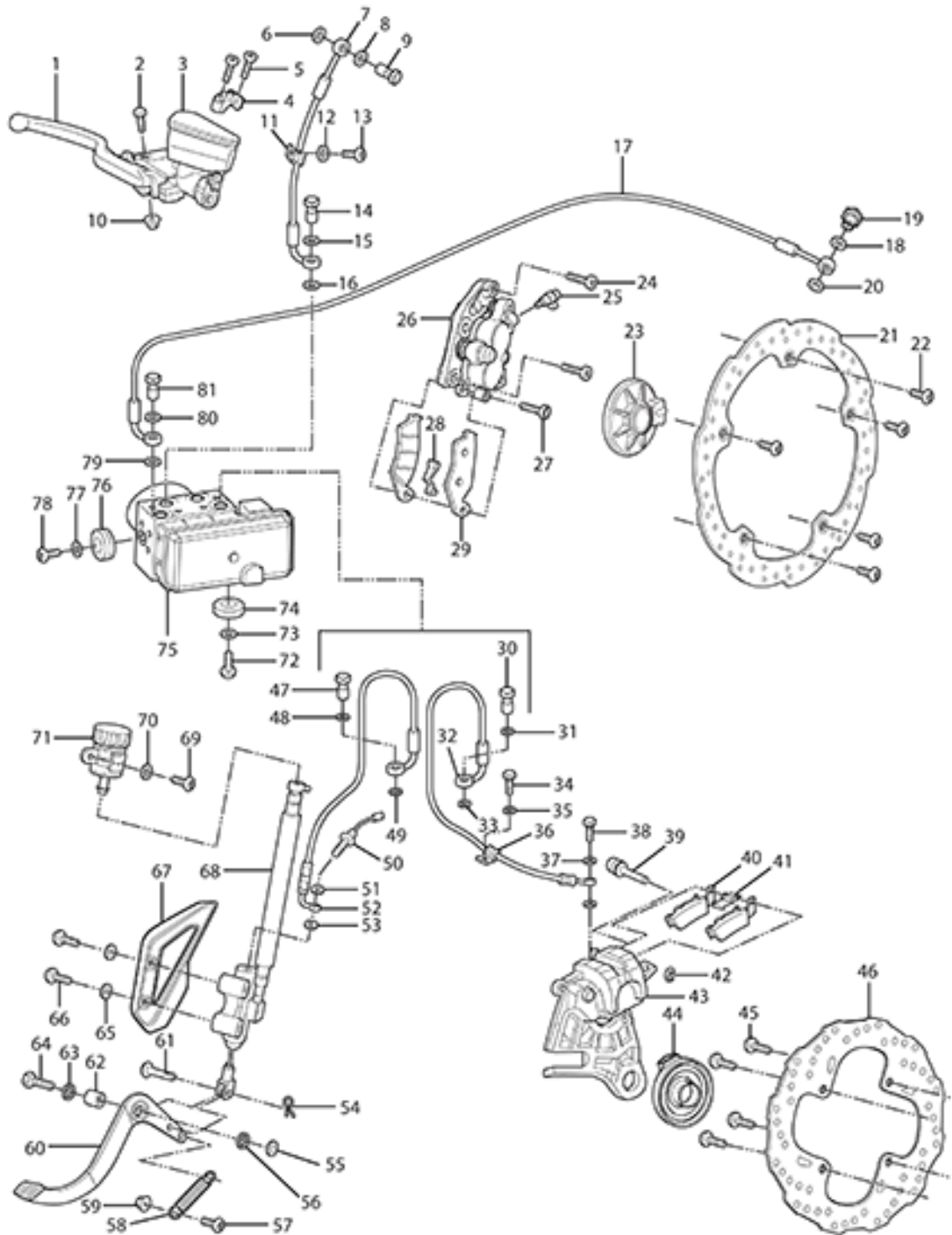
ZEV0011 - Lighting



ZEV0011 - Lighting

Callout	Part Number	Part Name	Qty. per Motorcycle
1	65-03462	TURN SIGNAL FR-RH RR-LH	1
2	20-05999	HEADLIGHT MOUNT RIGHT	1
3	20-06938	SDS ACCESSORY OUTLET COVER	1
4	45-03679	HEADLIGHT ASSY, 60/55W, TRIOM	1
5	20-03146	TURN SIGNAL HEX NUT CAP	2
6	90-02072	HEXAGON THIN NUT ISO 4035 M10-04 ZM-F-01 REV 02	2
7	90-02043	TOOTHED LOCK WASHER WITH EXTERNAL TEETH DIN 6797 A M10-B85 ZM-F-01 REV 02	2
8	20-06000	HEADLIGHT MOUNT LEFT	1
9	90-04084	HEXAGON SOCKET BUTTON HEAD CAP SCREW ISO 7380 M5X16-8.8 ZM-F-11 REV 03	4
10	90-04085	WASHER M5 X 11 X 1 NYLON 6/6 BLACK	4
11	90-04085	WASHER M5 X 11 X 1 NYLON 6/6 BLACK	4
12	90-04084	HEXAGON SOCKET BUTTON HEAD CAP SCREW ISO 7380 M5X16-8.8 ZM-F-11 REV 03	4
13	65-03463	TURN SIGNAL FR-LH RR-RH	1
14	65-08002	SDS HEADLIGHT BULB	1
15	90-07281	HEXAGON SOCKET BUTTON HEAD SCREWS ISO 7380 M6X12-8.8 ZM-F-01 REV 03 ZM-L-01 REV 01	2
16	90-02101	HEADLIGHT MOUNTING WASHER	4
17	65-04459	LED TAIL LIGHT TRIOM	1
18	65-03463	TURN SIGNAL FR-LH RR-RH	1
19	90-02043	TOOTHED LOCK WASHER WITH EXTERNAL TEETH DIN 6797 A M10-B85 ZM-F-01 REV 02	2
20	90-02072	HEXAGON THIN NUT ISO 4035 M10-04 ZM-F-01 REV 02	2
21	20-03146	TURN SIGNAL HEX NUT CAP	2
22	24-04439	SDS TAIL POD TOP NOTE: Top half only. Order bottom half PN: 24-05158	1
23	65-04460	LICENSE PLATE LIGHT	1
24	24-05159	REFLECTOR MOUNT BRACKET	1
25	90-05885	PHILIPS HEAD SHEET METAL SCREW 6 X 1/2	10
26	20-03487	REFLECTOR, OVAL, ADH BACK, RED ECIE	1
27	90-05244	HEXAGON SOCKET COUNTERSUNK HEAD SCREW ISO 10642 M5X12-10.9 ZM-F-01 REV 03	4
28	20-05241	LICENSE PLATE BUMPER	1
29	24-05292-1	LICENSE PLATE BRACKET EXTENSIONS NOTE: UR ONLY	1
30	90-07281	HEXAGON SOCKET BUTTON HEAD SCREWS ISO 7380 M6X12-8.8 ZM-F-01 REV 03 ZM-L-01 REV 01	2
31	90-02103	WASHER ISO 7089 6-200HV ZM-F-01 REV 02	10

32	90-04085	WASHER M5 X 11 X 1 NYLON 6/6 BLACK	4
33	90-02053	PREVAILING TORQUE TYPE NUT DIN 985 M5-08 ZM-F-01 REV 02	8
34	24-05161	LICENSE PLATE BRACKET EXTENSIONS NOTE: ONLY USED IN EU/AUS REGIONS	2
35	24-05161	LICENSE PLATE BRACKET EXTENSIONS NOTE: ONLY USED IN EU/AUS REGIONS	2
36	24-05158	SDS TAIL POD BOTTOM NOTE: Bottom half only. Order top half PN: 24-04439	1
37	90-07389	BMS MOUNTING SCREW NEXT TO DIA CONNECTOR	4
38	90-02053	PREVAILING TORQUE TYPE NUT DIN 985 M5-08 ZM-F-01 REV 02	8
39	65-03462	TURN SIGNAL FR-RH RR-LH	1
40	90-02103	WASHER ISO 7089 6-200HV ZM-F-01 REV 02	10
41	90-02054	PREVAILING TORQUE TYPE NUT DIN 985 M6-8 ZM-F-01 REV 02	4
42	20-05883-1	SR TAIL FRAME	1
43	20-05910	HEADLIGHT BRACKET	1
44	90-02101	HEADLIGHT MOUNTING WASHER	4
45	90-02545-1	BOLT M6 X 8	1

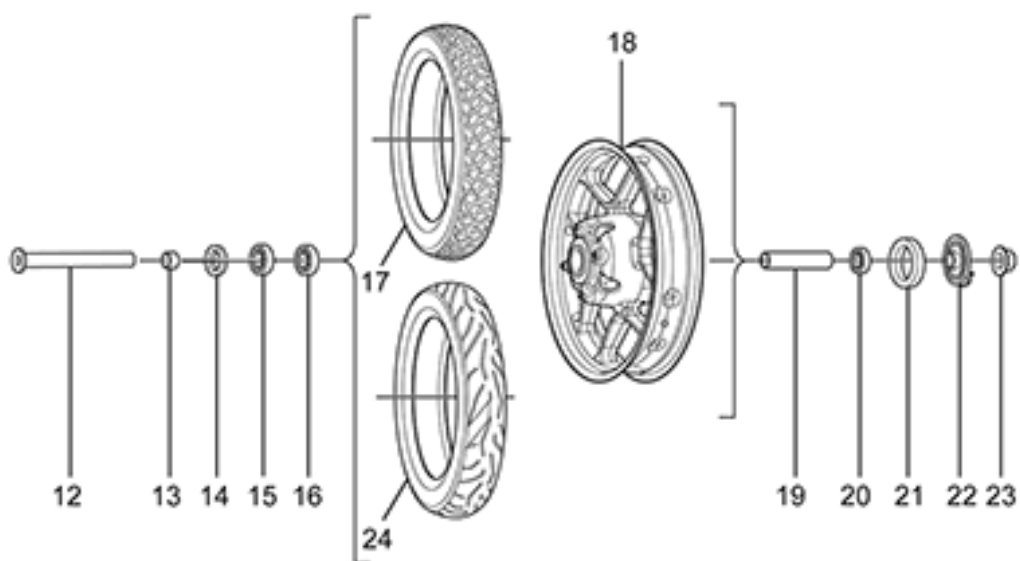
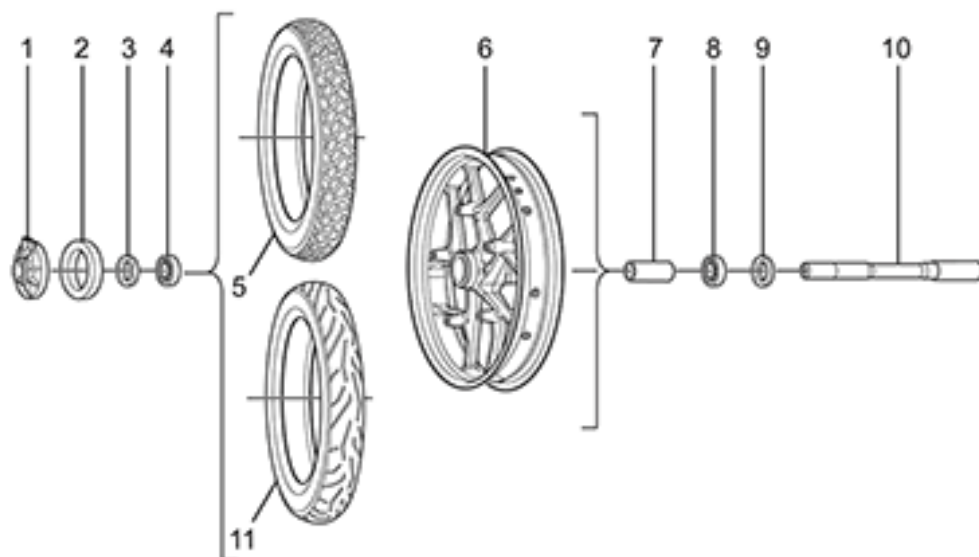


ZEV0012 - Braking

Callout	Part Number	Part Name	Qty. per Motorcycle
1	25-08032	SDS BRAKE JJUAN LEVER	1
2	PA-177	BRAKE LEVER PIVOT BOLT	1
3	25-07682	JJUAN 12.7MM FRONT MASTER CYLINDER SDS/FXS	1
4	25-08064	FRONT MASTER CYLINDER CLAMP KIT NOTE: SDS/XMX NOTE: Mount and Bolts NOTE: Upper Mirror Mount RH	1
5	PA-178	MIRROR POST BOLT 6M X 20	1
6	PA-128	BANJO GASKET	1
7	25-07824	SDS FRONT BRAKE LINE MC TO HCU	1
8	PA-128	BANJO GASKET	1
9	90-08014-3	BANJO BOLT	1
10	PA-130	BRAKE LEVER PIVOT BOLT NUT	1
11	PA-179	BRAKE LINE CLIP	1
12	20-01758-1	BRAKE LINE GUIDE	1
13	90-02545-3	P CLAMP TO TRIPLE CLAMP BOLT	1
14	PA-180	BANJO BOLT	1
15	PA-128	BANJO GASKET	1
16	PA-128	BANJO GASKET	1
17	25-07825	S FRONT BRAKE LINE HCU TO CALIPER	1
18	PA-128	BANJO GASKET	1
19	PA-181	BANJO BOLT	1
20	PA-128	BANJO GASKET	1
21	25-07702	BRAKE ROTOR 320MM FIXED	1
22	90-07833	CUSTOM ROTOR BOLT M8X23MM SHOULDER SCREW	1
23	45-07496	MPI WHEEL SPEED SENSOR	1
24	90-08029	HEXAGON HEAD SCREW ISO 4762 M10-1.25X40-10.9 ZM-F-01 REV03 ZM-L-01 REV01	1
25	PA-182	BLEEDER VALVE	1
26	25-07686	JJUAN 32/30MM FRONT CALIPER SDS	1
27	90-08029	HEXAGON HEAD SCREW ISO 4762 M10-1.25X40-10.9 ZM-F-01 REV03 ZM-L-01 REV01	1
28	PA-183	ANTI RATTLE CLIP	1
29	25-08029	BRAKE PADS SET FRONT SDS	1
30	PA-185	BANJO BOLT	1
31	PA-128	BANJO GASKET	1
32	25-08093	SDS REAR BRAKE LINE HCU TO CALIPER NOTE: Supersedes part number 25-07821.	1
33	PA-128	BANJO GASKET	1
34	90-07292	HEXAGON SOCKET BUTTON HEAD CAP SCREW ISO 7380 M5X16-8.8 ZM-F-11 REV 01 ZM-L-01 REV 01 NOTE: Does not apply to DS	1

35	90-02105	WASHER ISO 7093-1 6-200 HV ZM-F-01 REV 02	1
36	20-01758-1	BRAKE LINE GUIDE	1
37	PA-128	BANJO GASKET	1
38	PA-186	BANJO BOLT AT REAR CALIPER	1
39	PA-187	CALIPER SLIDE BOLT	1
40	25-08030	BRAKE PAD SET SDS REAR	1
41	PA-189	ANTI RATTLE CLIP	1
42	PA-190	CALIPER SLIDE BOLT CLIP	1
43	25-08083	JJUAN 34MM REAR CALIPER SDS NOTE: replacing old p/n: 25-08008	1
44	45-07496	MPI WHEEL SPEED SENSOR	1
45	90-02414	HEXAGON SOCKET BUTTON HEAD SCREW ISO 7380 M8X12-8.8 ZM-F-01 REV 03	1
46	25-07621	BRAKE ROTOR 240MM FIXED WITH COUNTERBORE	1
47	PA-191	BANJO BOLT AT HCU	1
48	PA-128	BANJO GASKET	1
49	PA-128	BANJO GASKET	1
50	PA-192	BRAKE LIGHT SWITCH NOTE: Not sold separately. Please order the Master Cylinder.	1
51	PA-128	BANJO GASKET	1
52	25-07820	SDS REAR BRAKE LINE MC TO HCU	1
53	PA-128	BANJO GASKET	1
54	90-02133	1/4 X 3/4 CLEVIS PIN STEEL ZINC	1
55	90-02100-2	M10 WASHER	1
56	20-02465	IGLIDE BEARING GFM-1416-06	1
57	90-02124-1	BUTTON CAP SCREW M6 X 25	1
58	20-03110	SPRING X BRAKE PEDAL	1
59	20-02465	IGLIDE BEARING GFM-1416-06	1
60	25-02449	X BRAKE PEDAL	1
61	90-02133	1/4 X 3/4 CLEVIS PIN STEEL ZINC	1
62	20-02455	X BRAKE PEDAL SPACER	1
63	20-02465	IGLIDE BEARING GFM-1416-06	1
64	PA-193	BRAKE PEDAL PIVOT BOLT	1
65	PA-194	BRAKE PEDAL PIVOT BOLT WASHER	1
66	PA-195	MASTER CYLINDER BOLT	1
67	25-07457	MASTER CYLINDER GUARD FOR J-JUAN MASTER CYLINDER	1
68	25-08015	JJUAN 12MM REAR MASTER CYLINDER SDS	1
69	90-07273	HEXAGON SOCKET BUTTON HEAD CAP SCREW ISO 7380 M6X16-8.8 ZM-F-01 REV 03 ZM-L-01 REV 01	1
70	PA-196	WASHER	1
71	PA-197	REAR MASTER CYLINDER RESERVOIR	1
72	90-07273	HEXAGON SOCKET BUTTON HEAD CAP SCREW ISO 7380 M6X16-8.8 ZM-F-01 REV 03 ZM-L-01 REV 01	1
73	90-02105	WASHER ISO 7093-1 6-200 HV ZM-F-01 REV 02	1

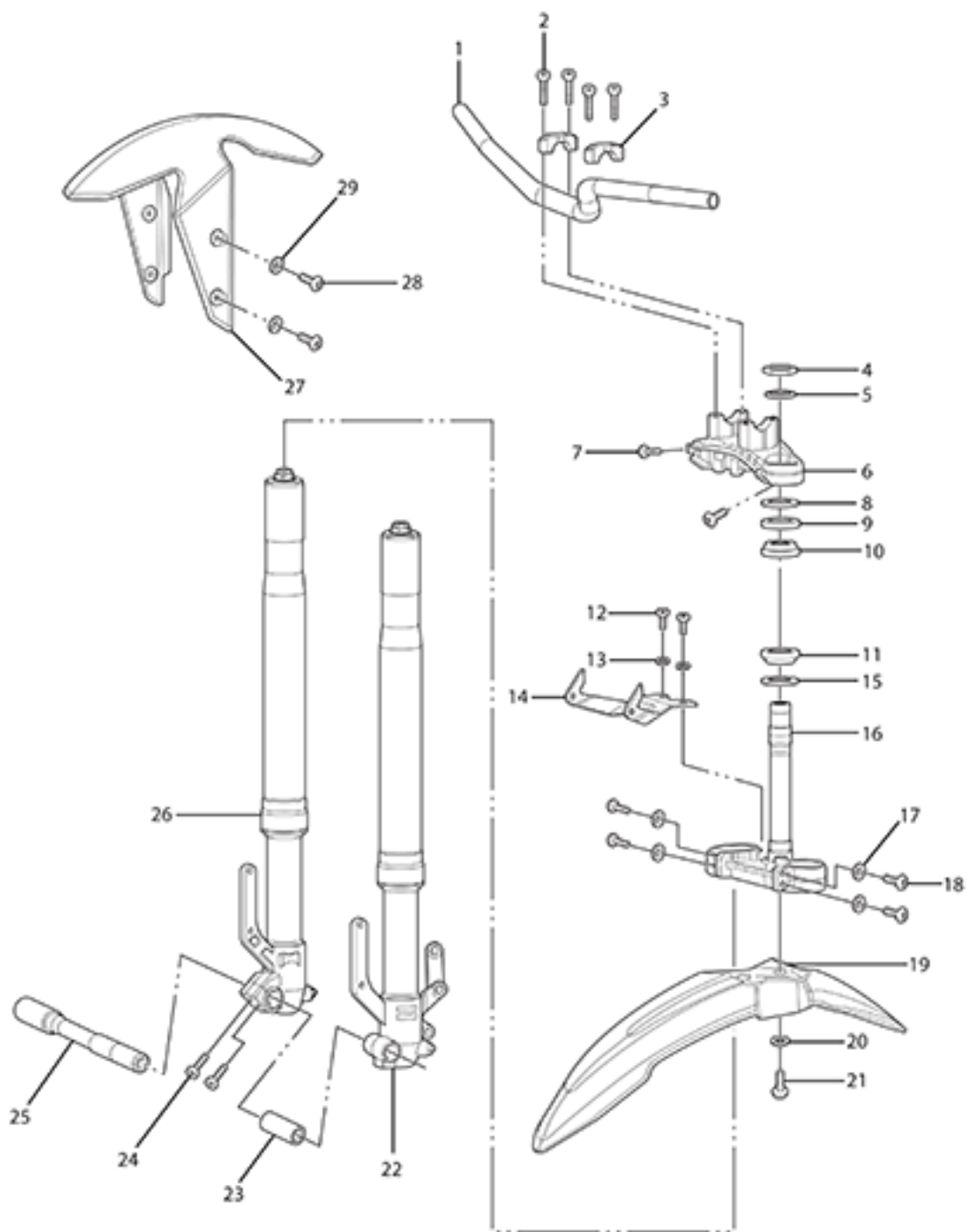
74	90-08027	GROMMET VIBRATION ISOLATION M6	1
75	25-08092	BOSCH ABS HCU FLUID FILLED 6 PROFILE VARIANTS NOTE: Supersedes part number 25-08081 and 25-08082.	1
76	90-08027	GROMMET VIBRATION ISOLATION M6	1
77	90-02105	WASHER ISO 7093-1 6-200 HV ZM-F-01 REV 02	0
78	90-07273	HEXAGON SOCKET BUTTON HEAD CAP SCREW ISO 7380 M6X16-8.8 ZM-F-01 REV 03 ZM-L-01 REV 01	1
79	PA-128	BANJO GASKET	1
80	PA-128	BANJO GASKET	1
81	PA-185	BANJO BOLT	1



ZEV0013 - Wheel Assy

Callout	Part Number	Part Name	Qty. per Motorcycle
1	45-07496	MPI WHEEL SPEED SENSOR	1
2	25-08080	ABS MAGNET RING	1
3	23-07774	6204 BEARING DUST SEAL	2
4	20-06138	BEARING 6204 NOTE: Bearing used as swing arm bearing in some models and as the wheel bearing (qty of 5; 2 in front and three in rear wheel) in 2015 and later models. NOTE: Manufacturer part number is 6204-2RS	2
5	<i>Not Applicable to this Bike Model</i>		
6	23-08065-4	3.00X17 FRONT CAST WHEEL ASSY SILVER BLACK NOTE: Superseded part number 23-07767-4.	1
7	23-07775	FRONT WHEEL BEARING TUBE	1
8	20-06138	BEARING 6204 NOTE: Bearing used as swing arm bearing in some models and as the wheel bearing (qty of 5; 2 in front and three in rear wheel) in 2015 and later models. NOTE: Manufacturer part number is 6204-2RS	2
9	23-07774	6204 BEARING DUST SEAL	2
10	23-07491	HOLLOW AXLE FRONT	1
11	23-07668	PIRELLI DIABLO ROSSO II, 110/70R17 M/C 54H	1
12	23-08032	REAR AXLE 20MM HOLLOW, ROUNDED END	1
13	23-07489	WHEEL SPACER DRIVE SIDE REAR	1
14	23-07774	6204 BEARING DUST SEAL	2
15	20-06138	BEARING 6204 NOTE: Bearing used as swing arm bearing in some models and as the wheel bearing (qty of 5; 2 in front and three in rear wheel) in 2015 and later models. NOTE: Manufacturer part number is 6204-2RS	2
16	20-06138	BEARING 6204 NOTE: Bearing used as swing arm bearing in some models and as the wheel bearing (qty of 5; 2 in front and three in rear wheel) in 2015 and later models. NOTE: Manufacturer part number is 6204-2RS	2
17	<i>Not Applicable to this Bike Model</i>		
18	23-08056-4	WHEEL 3.50X17 SDS REAR CAST WHEEL ASSY 16MY IMPL BLACK-SILVER C	1
19	23-07776	REAR WHEEL BEARING TUBE 15MY	1
20	20-06138	BEARING 6204 NOTE: Bearing used as swing arm bearing in some models and as the wheel bearing (qty of 5; 2 in front and three in rear wheel) in 2015 and later models. NOTE: Manufacturer part number is 6204-2RS	2

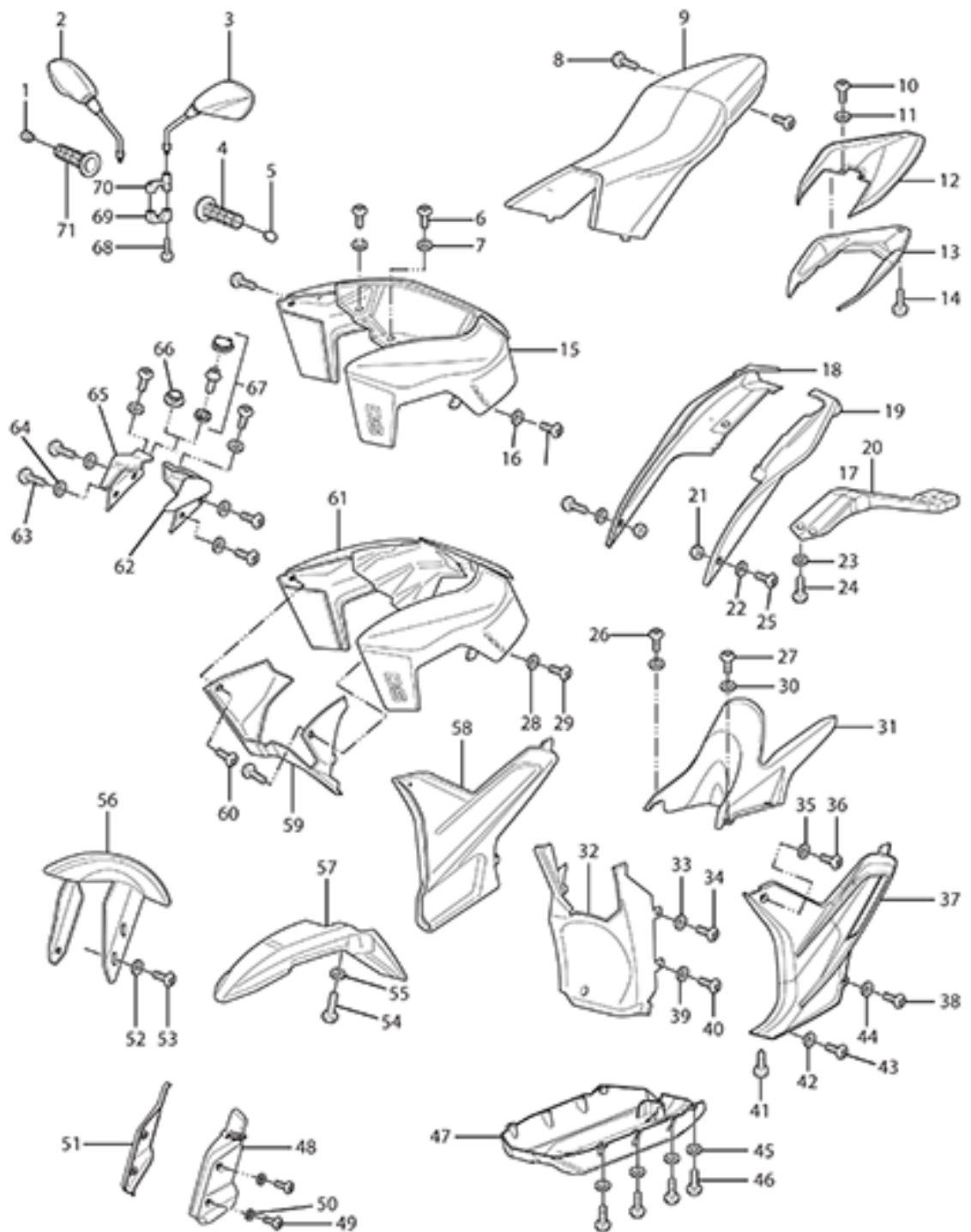
21	25-08080	ABS MAGNET RING	1
22	45-07496	MPI WHEEL SPEED SENSOR	1
23	90-05678	U-NUT M20X1.5 FN 27S 15H (REAR AXLE NUT) NOTE: Rear Axle Nut	1
24	23-07669	PIRELLI DIABLO ROSSO II, 140/70R17 M/C 66H	1



ZEV0014 - Steering Systems

Callout	Part Number	Part Name	Qty. per Motorcycle
1	27-08049	SPORT HANDLEBAR NOTE: Supersedes part number 27-08017.	1
2	90-02096	MOTOR MOUNTING LEFT FRONT TOP AND LEFT FRONT BOTTOM BOLT	1
3	22-00687	S HANDLEBAR CLAMP	1
4	22-06279	STEERING STEM THIN NUT M27 X 1.5 X 8MM	1
5	20-06278	WASHER 41 - 27.5 X 2 MM	1
6	22-07622	SDS UPPER TRIPLE CLAMP 15MY IMP	1
7	90-02094	HEXAGON SOCKET HEAD CAP SCREW ISO 4762 M8X25-10.9 ZM-F-01 REV 03	1
8	22-06257	STEERING STEM LOCK NUT M 30 X1.5 MM	1
9	81-08045	BEARING LIP SEAL OVERMOLDED 55MM OD NOTE: Supersedes part 20-06113	1
10	20-06068	STEERING HEAD BEARING KOYO SAC3055-1	1
11	20-06068	STEERING HEAD BEARING KOYO SAC3055-1	1
12	90-02109	HEXAGON SOCKET BUTTON HEAD CAP SCREW ISO 7380 M5X12-8.8 ZM-F-01 REV 03	1
13	90-02101	HEADLIGHT MOUNTING WASHER	1
14	20-05910	HEADLIGHT BRACKET	1
15	81-08045	BEARING LIP SEAL OVERMOLDED 55MM OD NOTE: Supersedes part 20-06113	1
16	22-07624	SDS LOWER TRIPLE CLAMP ASSY 15MY IMP NOTE: Superseded by 22-08082	1
17	90-02104	WASHER ISO 7089 -8-200 HV ZM-F-01 REV 02	1
18	90-02094	HEXAGON SOCKET HEAD CAP SCREW ISO 4762 M8X25-10.9 ZM-F-01 REV 03	1
19	<i>Not Applicable to this Bike Model</i>		
20	<i>Not Applicable to this Bike Model</i>		
21	<i>Not Applicable to this Bike Model</i>		
22	22-05874	S FORK 41MM LEFT	1
23	PA-204	INNER BEARING SPACER	1
24	PA-205	M8 X 30 BOLT	1
25	23-07491	HOLLOW AXLE FRONT	1
26	22-05875	S FORK 41MM RIGHT	1
27	24-08027-6	FRONT FENDER STREET TO WORK WITH SHOWA SUSPENSION RED	1
28	90-07292	HEXAGON SOCKET BUTTON HEAD CAP SCREW ISO 7380 M5X16-8.8 ZM-F-11 REV 01 ZM-L-01 REV 01 NOTE: Does not apply to DS	1
29	90-04085	WASHER M5 X 11 X 1 NYLON 6/6 BLACK	1

ZEV0015 - Body Trim



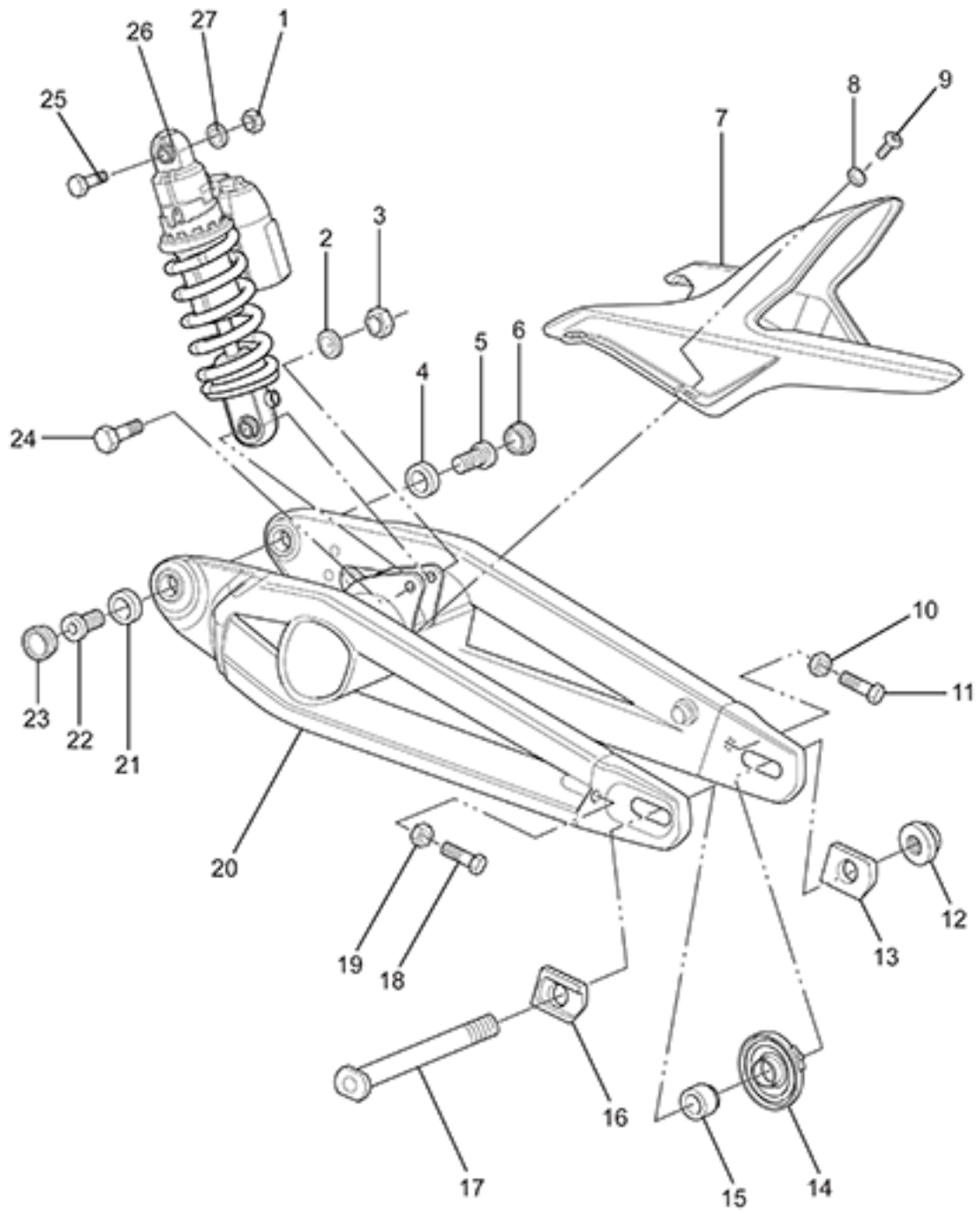
ZEV0015 - Body Trim

Callout	Part Number	Part Name	Qty. per Motorcycle
1	27-08002	RIDER INTERFACE MISCELLANEOUS COMPONENT HANDLEBAR END CAP	1
2	27-08057	MIRROR RH NOTE: Supersedes part number 27-08004.	1
3	27-08056	MIRROR LH NOTE: Supersedes part number 27-08003.	1
4	27-08007	HAND GRIP LEFT SIDE	1
5	27-08002	RIDER INTERFACE MISCELLANEOUS COMPONENT HANDLEBAR END CAP	1
6	90-04084	HEXAGON SOCKET BUTTON HEAD CAP SCREW ISO 7380 M5X16-8.8 ZM-F-11 REV 03	1
7	90-04085	WASHER M5 X 11 X 1 NYLON 6/6 BLACK	1
8	90-08005	SEAT BOLT M8X55 NOTE: Supersedes 90-07009.	1
9	24-04854	SDS SEAT ASSEMBLY	1
10	PA-41	BOLT	1
11	PA-42	WASHER	1
12	24-04432-6	SDS TAIL TOP RED	1
13	24-04433-6	SDS TAIL BOTTOM RED	1
14	90-05885	PHILIPS HEAD SHEET METAL SCREW 6 X 1/2	1
15	24-08206-1	Option #1: BLACK NOTE: Plastic tank assembly used with the Zero SR includes Zero logo and SR letters. Includes cut out area for tank bag. NOTE: Supersedes 24-08074	1
	24-08206-4	Option #2: WHITE NOTE: Plastic tank assembly used with the Zero SR includes Zero logo and SR letters. Includes cut out area for tank bag. NOTE: Supersedes 24-08074	1
	24-08206-6	Option #3: RED NOTE: Plastic tank assembly used with the Zero SR includes Zero logo and SR letters. Includes cut out area for tank bag. NOTE: Supersedes 24-08074	1
	24-08206-7	Option #4: YELLOW NOTE: Plastic tank assembly used with the Zero SR includes Zero logo and SR letters. Includes cut out area for tank bag. NOTE: Supersedes 24-08074	1
16	90-04085	WASHER M5 X 11 X 1 NYLON 6/6 BLACK	1
17	90-04084	HEXAGON SOCKET BUTTON HEAD CAP SCREW ISO 7380 M5X16-8.8 ZM-F-11 REV 03	1
18	24-05888	TRUNK PAN RIGHT FOR SIZE 6 CONTROLLER NOTE: Superseded by 24-08080 to help adjust rear shock.	1

19	24-05889	TRUNK PAN LEFT FOR SIZE 6 CONTROLLER	1
20	24-04439	SDS TAIL POD TOP NOTE: Top half only. Order bottom half PN: 24-05158	1
21	PA-43	NUT	1
22	PA-44	WASHER	1
23	90-02103	WASHER ISO 7089 6-200HV ZM-F-01 REV 02	1
24	90-07281	HEXAGON SOCKET BUTTON HEAD SCREWS ISO 7380 M6X12-8.8 ZM-F-01 REV 03 ZM-L-01 REV 01	1
25	PA-45	BOLT	1
26	PA-46	BOLT	1
27	PA-47	BOLT	1
28	90-04085	WASHER M5 X 11 X 1 NYLON 6/6 BLACK	1
29	90-04084	HEXAGON SOCKET BUTTON HEAD CAP SCREW ISO 7380 M5X16-8.8 ZM-F-11 REV 03	1
30	PA-48	WASHER	1
31	24-08157	REAR INNER FENDER NOTE: Supersedes part number 24-04438	1
32	24-07674	SDS STUBBY CHIN CENTER	1
33	90-04085	WASHER M5 X 11 X 1 NYLON 6/6 BLACK	1
34	90-04084	HEXAGON SOCKET BUTTON HEAD CAP SCREW ISO 7380 M5X16-8.8 ZM-F-11 REV 03	1
35	90-04085	WASHER M5 X 11 X 1 NYLON 6/6 BLACK	1
36	90-04084	HEXAGON SOCKET BUTTON HEAD CAP SCREW ISO 7380 M5X16-8.8 ZM-F-11 REV 03	1
37	24-06684	SDS CHIN FAIRING LEFT NOTE: Please order 80-06733 GRAPHIC LABEL SANTA CRUZ separately.	1
38	90-04084	HEXAGON SOCKET BUTTON HEAD CAP SCREW ISO 7380 M5X16-8.8 ZM-F-11 REV 03	1
39	90-04085	WASHER M5 X 11 X 1 NYLON 6/6 BLACK	1
40	90-04084	HEXAGON SOCKET BUTTON HEAD CAP SCREW ISO 7380 M5X16-8.8 ZM-F-11 REV 03	1
41	90-04084	HEXAGON SOCKET BUTTON HEAD CAP SCREW ISO 7380 M5X16-8.8 ZM-F-11 REV 03	1
42	90-04085	WASHER M5 X 11 X 1 NYLON 6/6 BLACK	1
43	90-04084	HEXAGON SOCKET BUTTON HEAD CAP SCREW ISO 7380 M5X16-8.8 ZM-F-11 REV 03	1
44	90-04085	WASHER M5 X 11 X 1 NYLON 6/6 BLACK	1
45	PA-206	BATTERY RETAINING RAIL	1
46	90-02109	HEXAGON SOCKET BUTTON HEAD CAP SCREW ISO 7380 M5X12-8.8 ZM-F-01 REV 03	1
47	24-07746	STRUCTURAL PLASTIC SKID PAN	1
48		<i>Not Applicable to this Bike Model</i>	
49		<i>Not Applicable to this Bike Model</i>	
50		<i>Not Applicable to this Bike Model</i>	

51	<i>Not Applicable to this Bike Model</i>		
52	90-07292	HEXAGON SOCKET BUTTON HEAD CAP SCREW ISO 7380 M5X16-8.8 ZM-F-11 REV 01 ZM-L-01 REV 01 NOTE: Does not apply to DS	1
53	90-04085	WASHER M5 X 11 X 1 NYLON 6/6 BLACK	1
54	<i>Not Applicable to this Bike Model</i>		
55	<i>Not Applicable to this Bike Model</i>		
56	24-08027-6	FRONT FENDER STREET TO WORK WITH SHOWA SUSPENSION RED	1
57	<i>Not Applicable to this Bike Model</i>		
58	24-08235	SDS CHIN FAIRING RIGHT NOTE: Please order 80-06733 GRAPHIC LABEL SANTA CRUZ or 80-08012 CRAFTED IN CALIFORNIA JEWEL. NOTE: Supersedes part number 24-06685.	1
59	24-04428	SDS FAIRING FRONT CENTER BLACK#2	1
60	90-05885	PHILIPS HEAD SHEET METAL SCREW 6 X 1/2	1
61	24-08208-6	SR POWER TANK ASSEMBLY RED NOTE: This red plastic tank assembly should be used with a Power Tank only and includes the Zero logo and SR markings. NOTE: Supersedes 20-06723.	1
62	20-06000	HEADLIGHT MOUNT LEFT	1
63	90-04084	HEXAGON SOCKET BUTTON HEAD CAP SCREW ISO 7380 M5X16-8.8 ZM-F-11 REV 03	1
64	90-04085	WASHER M5 X 11 X 1 NYLON 6/6 BLACK	1
65	20-05999	HEADLIGHT MOUNT RIGHT	1
66	20-06938	SDS ACCESSORY OUTLET COVER	1
67	10-07504	12V ACCESSORY SOCKET KIT - SDS NOTE: Charge a GPS, smart phone or mp3 player using the Zero Motorcycles 12V Accessory Socket Kit. Designed to connect directly to your motorcycle's power port harness, the accessory socket enables you to charge small devices that have a cigarette lighter plug. The accessory outlet is rated up to 10 amps/120 watts. This kit includes all mounting hardware for installation on the 2014 and later Zero S, Zero DS and Zero SR motorcycles. NOTE: 2014 [Zero SR, Zero S, Zero DS] 2015 [Zero SR, Zero S, Zero DS] 2016-2017 [Zero SR, Zero S, Zero DS, Zero DSR]	1
68	90-07265	HEXAGON SOCKET HEAD CAP SCREW ISO 4762 M6X20-8.8 ZM-F-01 REV 03 ZM-L-01 REV 01	1
69	24-02961	MIRROR MOUNT CLAMP	1
70	24-02913	MIRROR MOUNT BODY LH THREAD	1
71	27-08006	HAND GRIP THROTTLE SIDE	1

ZEV0016 - Rear Suspension

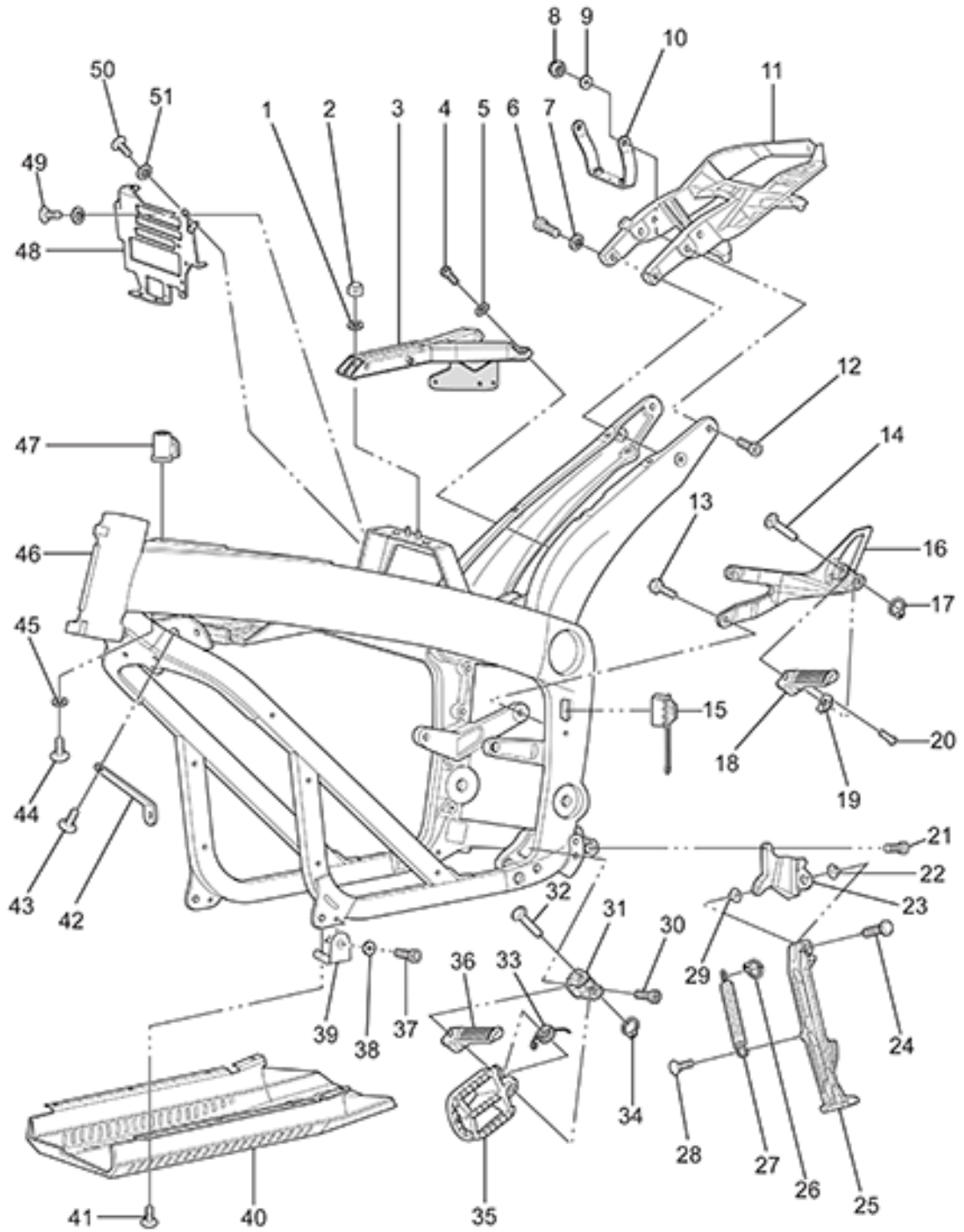


ZEV0016 - Rear Suspension

Callout	Part Number	Part Name	Qty. per Motorcycle
1	90-02050	PREVAILING TORQUE TYPE NUT DIN 985 M10-8 ZM-F-01 REV 02	1
2	90-02100-2	M10 WASHER	1
3	90-02050	PREVAILING TORQUE TYPE NUT DIN 985 M10-8 ZM-F-01 REV 02	1
4	20-06138	BEARING 6204 NOTE: Bearing used as swing arm bearing in some models and as the wheel bearing (qty of 5; 2 in front and three in rear wheel) in 2015 and later models. NOTE: Manufacturer part number is 6204-2RS	1
5	20-06130	STUB AXLE	1
6	20-06937	SDS STUB-PIVOT COVER	1
7	24-04438	REAR INNER FENDER NOTE: Superseded by 24-08157	1
8	90-04085	WASHER M5 X 11 X 1 NYLON 6/6 BLACK	1
9	90-02109	HEXAGON SOCKET BUTTON HEAD CAP SCREW ISO 7380 M5X12-8.8 ZM-F-01 REV 03	1
10	90-05088	HEXAGON FLANGE NUT DIN 6923 M8-1.25 ZM-F-01 REV 03	1
11	90-03030	HEXAGON HEAD SCREW DIN 933 M8X40-10.9 ZM-F-01 REV 03	1
12	90-05678	U-NUT M20X1.5 FN 27S 15H (REAR AXLE NUT) NOTE: Rear Axle Nut	1
13	20-04738	REAR AXLE ADJUSTER PUSH BLOCK, NUT SIDE	1
14	45-07496	MPI WHEEL SPEED SENSOR	1
15	23-07489	WHEEL SPACER DRIVE SIDE REAR	1
16	20-04737	REAR AXLE ADJUSTER PUSH BLOCK, HEAD SIDE	1
17	23-04736	AXLE 20MM HOLLOW NOTE: Superseded by pn:23-08032	1
18	90-03030	HEXAGON HEAD SCREW DIN 933 M8X40-10.9 ZM-F-01 REV 03	1
19	90-05088	HEXAGON FLANGE NUT DIN 6923 M8-1.25 ZM-F-01 REV 03	1
20	21-07747	S SWINGARM	1
21	20-06138	BEARING 6204 NOTE: Bearing used as swing arm bearing in some models and as the wheel bearing (qty of 5; 2 in front and three in rear wheel) in 2015 and later models. NOTE: Manufacturer part number is 6204-2RS	1
22	20-06130	STUB AXLE	1
23	20-06937	SDS STUB-PIVOT COVER	1
24	90-05711	LOWER SHOCK EYE BOLT M10-1.5X60MM	1

25	90-05711	LOWER SHOCK EYE BOLT M10-1.5X60MM	1
26	22-05881	S SHOCK 40MM NOTE: not applicable in DS	1
27	90-02100-2	M10 WASHER	1

ZEV0017 - Frame(Left)

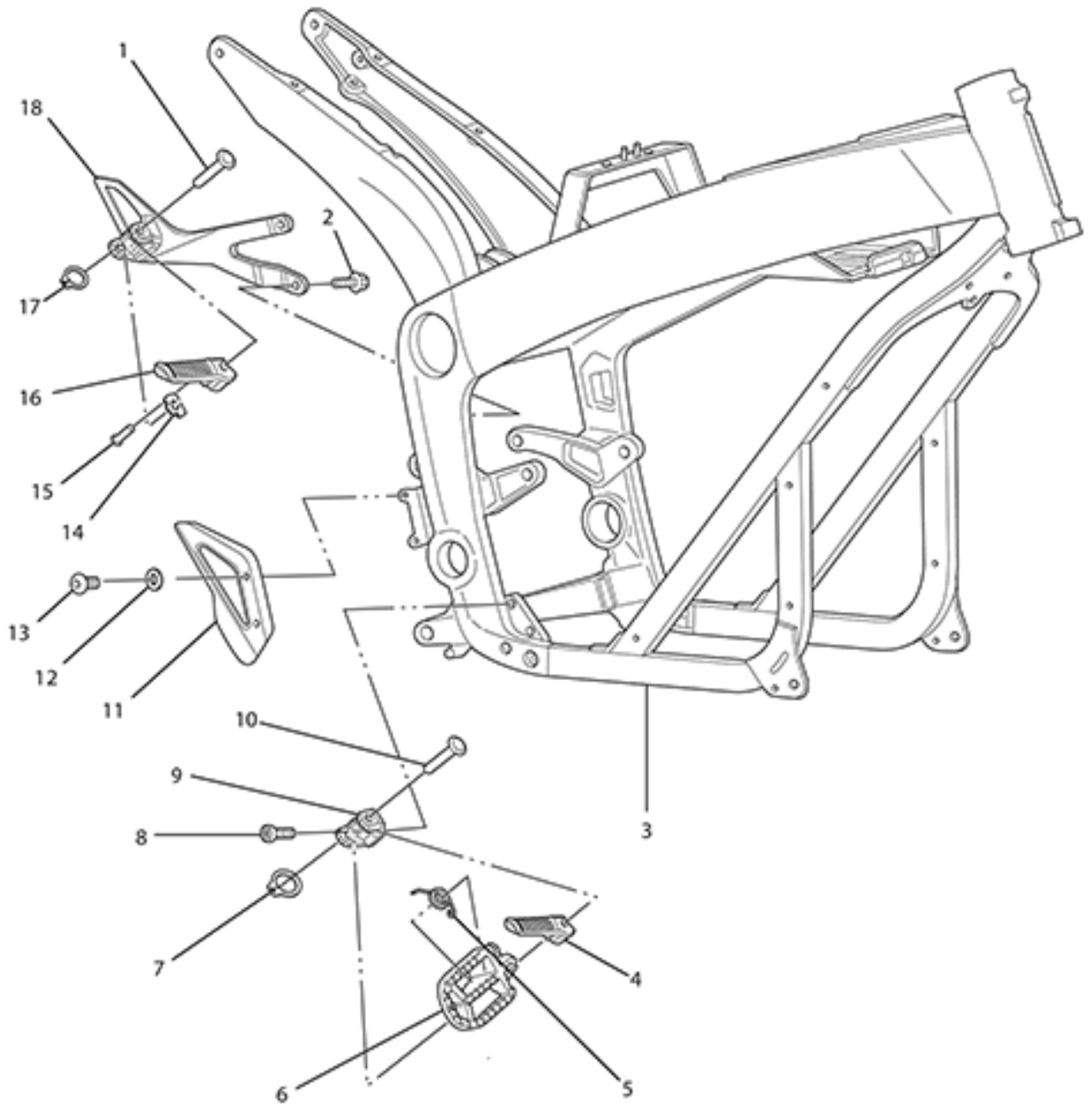


ZEV0017 - Frame(Left)

Callout	Part Number	Part Name	Qty. per Motorcycle
1	90-02103	WASHER ISO 7089 6-200HV ZM-F-01 REV 02	1
2	90-02054	PREVAILING TORQUE TYPE NUT DIN 985 M6-8 ZM-F-01 REV 02	1
3	21-06979	SDS SEAT FRAME WITH FUSEPANEL MOUNT	1
4	90-02122	HEXAGON SOCKET BUTTON HEAD CAP SCREW ISO 7380 M6X16-8.8 ZM-F-01 REV 03	1
5	90-02103	WASHER ISO 7089 6-200HV ZM-F-01 REV 02	1
6	90-04103	TAIL FRAME BOLT HEX HEAD 8MM - 1.00 X 30MM	1
7	90-02104	WASHER ISO 7089 -8-200 HV ZM-F-01 REV 02	1
8	90-03236	PREVAILING TORQUE TYPE NUT DIN 985 M8-10 ZM-F-01 REV 02	0
9	90-02104	WASHER ISO 7089 -8-200 HV ZM-F-01 REV 02	1
10	20-05897	HEATSINK SUPPORT	1
11	20-04876	SDS TAIL FRAME	1
12	90-04103	TAIL FRAME BOLT HEX HEAD 8MM - 1.00 X 30MM	1
13	PA-50	PASSENGER CLEVIS BRACKET BOLT 8MM - 1.25 X 25MM	1
14	90-02725-06	CLEVIS PIN CUSTOM 10MM X 45L	1
15	45-04864	CAVITY PLUG C13	1
16	20-04285	SDS PASSENGER PEG BRKT L	1
17	90-02879	RETAINING RING 9MM SHAFT	1
18	20-05228	FOOTPEG LT PASSENGER	1
19	20-04279	FOOTPEG DETENT PLATE	1
20	20-05404	FOOTPEG DETENT BALL MECHANISM	1
21	90-07277	HEXAGON SOCKET THIN HEAD CAP SCREW DIN 7984 M10X25-8.8 ZM-F-01 REV 03 ZM-L-01 REV 01	1
22	90-02800	BUSHING FLANGE 0.375	1
23	20-06590	KICKSTAND MOUNT	1
24	90-02799	CLEVIS PIN CUSTOM NOTE: Used to attach kickstand leg to mount.	1
25	20-05660	SHORT KICKSTAND LEG W/MAGNET	1
26	90-02837	E CLIP 0.375	1
27	20-00710	S KS SPRING OUT	1
28	90-07261	HEXAGON SOCKET COUNTERSUNK HEAD SCREW ISO 10642 M8X20-10.9 ZM-F-01 REV 03 ZM-L-01 REV 01	1
29	90-02800	BUSHING FLANGE 0.375	1
30	90-07277	HEXAGON SOCKET THIN HEAD CAP SCREW DIN 7984 M10X25-8.8 ZM-F-01 REV 03 ZM-L-01 REV 01	1
31	20-02723	CLEVIS FOOT PEG UNIVERSAL LEFT	1
32	90-02725-06	CLEVIS PIN CUSTOM 10MM X 45L	1
33	20-02727	TORSION SPRING, .678 OD .078 WIRE, CCW	1

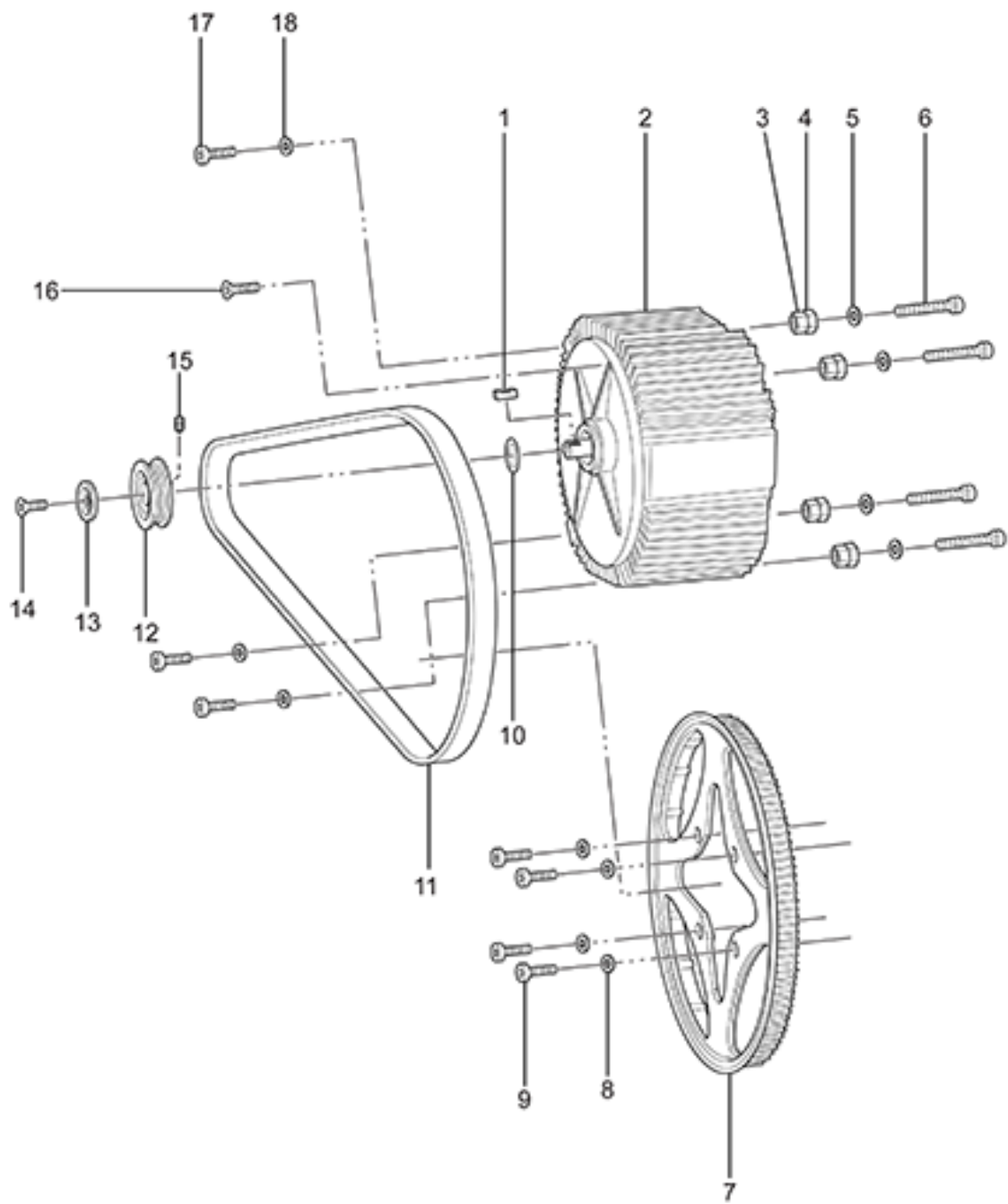
34	90-02879	RETAINING RING 9MM SHAFT	1
35	<i>Not Applicable to this Bike Model</i>		
36	20-04305	FOOTPEG LT RIDER	1
37	90-07288	HEXAGON SOCKET HEAD CAP SCREW ISO 4762 M5X12-8.8 ZM-F-01 REV 03 ZM-L-01 REV 01	1
38	PA-51	M5 FLAT WASHER	1
39	20-05307	SKID PAN BRACKET	1
40	20-05126	SDS SKID PAN NOTE: Superseded by part number 26-08051.	1
41	90-02109	HEXAGON SOCKET BUTTON HEAD CAP SCREW ISO 7380 M5X12-8.8 ZM-F-01 REV 03	1
42	20-07073	SDS FRAME MOUNTED HORN BRACKET	1
43	90-02128	HEXAGON SOCKET BUTTON HEAD CAP SCREW ISO 7380 M8X20-8.8 ZM-F-01 REV 03	1
44	90-07281	HEXAGON SOCKET BUTTON HEAD SCREWS ISO 7380 M6X12-8.8 ZM-F-01 REV 03 ZM-L-01 REV 01	1
45	90-02103	WASHER ISO 7089 6-200HV ZM-F-01 REV 02	1
46	26-08128	SR MAIN FRAME NOTE: Must supply VIN#, Warranty Claim# and proof of destruction of original frame when ordering.	1
47	20-05202	KEYSWITCH LOCK AND TANK BAG LOCK COMBO KIT NOTE: This Kit includes an ignition lock (45-02692) and a tank bag/helmet lock (p/n 20-05044) that have been keyed alike with two keys.	1
48	20-07736	ELECTRICAL PANEL MOUNT PLATE NOTE: Superseded by 26-08120.	1
49	PA-52	ELECTRICAL BRACKET BOLT HEX HEAD M5 - 0.80 X 12MM	1
50	PA-53	ELECTRICAL BRACKET BOLT HEX HEAD M5 - 0.80 X 12MM	1
51	PA-54	ELECTRICAL PANEL BOLT WASHER, M5 FLAT WASHER	1

ZEV0018 - Frame(Right)



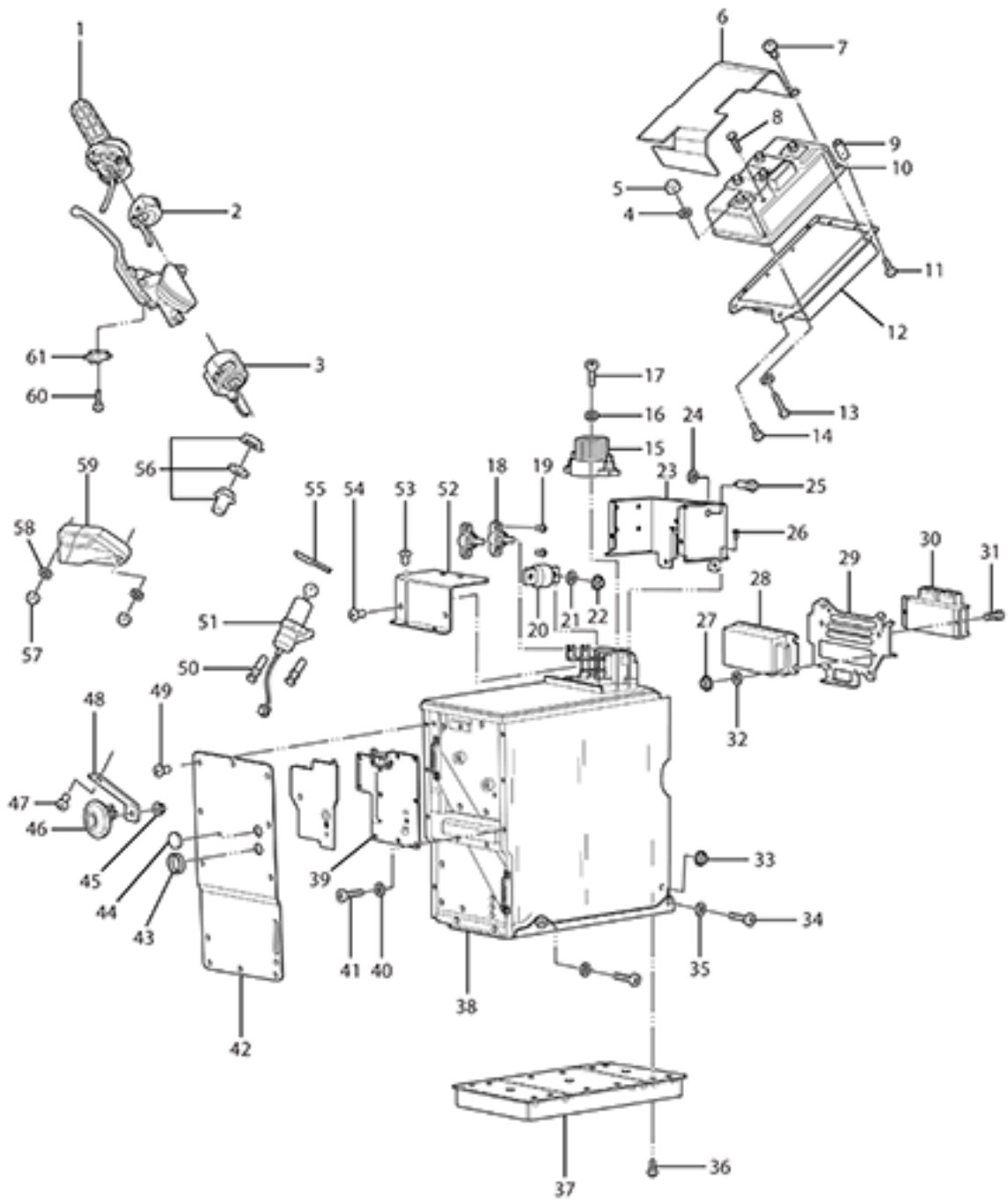
ZEV0018 - Frame(Right)

Callout	Part Number	Part Name	Qty. per Motorcycle
1	90-02725-06	CLEVIS PIN CUSTOM 10MM X 45L	1
2	PA-206	BATTERY RETAINING RAIL	1
3	26-08128	SR MAIN FRAME NOTE: Must supply VIN#, Warranty Claim# and proof of destruction of original frame when ordering.	1
4	20-04304	FOOTPEG RT RIDER NOTE: Does not apply to DS	1
5	20-02727	TORSION SPRING, .678 OD .078 WIRE, CCW	1
6	<i>Not Applicable to this Bike Model</i>		
7	90-02879	RETAINING RING 9MM SHAFT	1
8	90-07277	HEXAGON SOCKET THIN HEAD CAP SCREW DIN 7984 M10X25-8.8 ZM-F-01 REV 03 ZM-L-01 REV 01	1
9	20-02724	CLEVIS FOOT PEG UNIVERSAL RIGHT	1
10	90-02725-06	CLEVIS PIN CUSTOM 10MM X 45L	1
11	25-07457	MASTER CYLINDER GUARD FOR J-JUAN MASTER CYLINDER	1
12	90-02103	WASHER ISO 7089 6-200HV ZM-F-01 REV 02	1
13	90-07323	HEXAGON SOCKET BUTTON HEAD CAP SCREW ISO 7380 M6X25-8.8 ZM-F-01 REV 03 ZM-L-01 REV 01	1
14	20-04279	FOOTPEG DETENT PLATE	1
15	20-05404	FOOTPEG DETENT BALL MECHANISM	1
16	20-05227	FOOTPEG RT PASSENGER	1
17	90-02879	RETAINING RING 9MM SHAFT	1
18	20-04284	SDS PASSENGER PEG BRKT R NOTE: superseded by 20-07604	1



ZEV0019 - Motor and Drive System

Callout	Part Number	Part Name	Qty. per Motorcycle
1	30-06745	SHAFT KEY .25 MOTOR SPROCKET NOTE: Motor Sprocket	1
2	12-08035	ZERO SR 75-7R MOTOR REPLACEMENT KIT NOTE: Must Provide Warranty Claim and VIN# when ordering NOTE: Old Part#30-07773	1
3	90-04783	HEXAGON NUT ISO 4033 M14-2 ZM-F-01 REV 03	1
4	20-04774	MOTOR JACK SCREW INNER	1
5	90-02104	WASHER ISO 7089 -8-200 HV ZM-F-01 REV 02	1
6	90-05179	HEXAGON SOCKET HEAD CAP SCREW ISO 4762 M8X60-8.8 ZM-F-01 REV 03	1
7	30-03672	SPROCKET REAR BELT DRIVE 132T, 8MM PITCH, 17MM WIDE CASTING NOTE: Please order 30-04051	1
7	30-04051	SPROCKET REAR BELT DRIVE 132T, 8MM PITCH, 17MM WIDE FINISHED	1
8	90-02104	WASHER ISO 7089 -8-200 HV ZM-F-01 REV 02	1
9	90-07289	HEXAGON SOCKET THIN HEAD CAP SCREW DIN 7984 M8X30-8.8 ZM-F-01 REV 03 ZM-L-01 REV 01 NOTE: THIN HEAD CAP SCREW DIN 7984 M8X30-8.8	1
10	<i>Not Applicable to this Bike Model</i>		
11	30-08084	BELT DRIVE, 220T, 8MM PITCH, 14MM WIDE, NEW LOGO	1
12	30-03658	SPROCKET FRONT, BELT DRIVE 30T, 8MM PITCH, 15MM WIDE 1" BORE NOTE: Applies to SR only	1
13	20-05453	LOW PROFILE BELT SPROCKET MOTOR SHAFT TOPHAT	1
14	90-02056	HEXAGON SOCKET COUNTERSUNK HEAD SCREW M10X25-8.8 MOTOR SHAFT NOTE: Bolt used to hold front sprocket in place onto the motor shaft. NOTE: Sprocket	1
15	<i>Not Applicable to this Bike Model</i>		
16	90-08037	HEXALOBULAR (6 LOBE) SOCKET FLAT HEAD COUNTERSUNK SCREW ISO 14582 M8X30-10.9 ZM-F-01 REV 04 NOTE: Used for both drive side rear motor mount or rear sprocket mounting depending on model. NOTE: Supersedes 90-03223.	1
17	90-02096	MOTOR MOUNTING LEFT FRONT TOP AND LEFT FRONT BOTTOM BOLT	1
18	90-02104	WASHER ISO 7089 -8-200 HV ZM-F-01 REV 02	1



Callout	Part Number	Part Name	Qty. per Motorcycle
1	45-08039	THROTTLE BITRON HALL EFFECT PCB NOTE: Replaced PN 27-08000	1
2	40-06054	KILL MODE START SWITCH	1
3	60-07780	LEFT HAND SWITCHGEAR ECIE	1
4	90-02103	WASHER ISO 7089 6-200HV ZM-F-01 REV 02	1
5	90-02071	HEXAGON NUT ISO 4032 M6-8 ZM-F-01 REV 02	1
6	24-08067	BODYWORK MISC #6 CONTROLLER UN-SHIELDED COVER	1
7	90-06250	CONTROLLER FORMEX PAN HEAD PHILLIPS #6 SHEET METAL SCREW	1
8	90-07063	CONTROLLER LEAD BOLTS M8X16	1
9		<i>Not Applicable to this Bike Model</i>	
10	60-07008	CONTROLLER SIZE 6 GEN 4 SEVCON	1
11	90-05843	M8 X 50MM	1
12	26-08046	CONTROLLER HEATSINK SIZE 6 NOISE INSULATED	1
13	90-03251	HEXAGON SOCKET HEAD CAP SCREW ISO 4762 M6X30-8.8 ZM-F-01 REV 03	1
14	90-07268	HEXAGON SOCKET HEAD CAP SCREW ISO 4762 M8X25-10.9 ZM-F-01 REV 03 ZM-L-01 REV 01	1
15	60-06705	CONTACTOR GIGAVAC GX11 12/40VDC COIL	1
16	90-02101	HEADLIGHT MOUNTING WASHER	1
17	90-02116	M5 X 30 MM	1
18	PA-207	FUSE MOUNT 45-04344-1	1
19	PA-208	FUSE MOUNT BOLT 90-07125-19	1
20	45-05224	FUSE 300A 160VDC CLASS T	1
21	PA-209	FUSE WASHER	1
22	45-05240	FUSE NUT INTERNAL	1
23	PA-210	CONTACTOR COVER	1
24	PA-211	LV FUSE WASHER	1
25	PA-212	LV FUSE HOLDER 3101-0125	1
26	PA-213	BATTERY BOX SCREW 90-07124	1
27	90-02054	PREVAILING TORQUE TYPE NUT DIN 985 M6-8 ZM-F-01 REV 02	1
28	60-07190	DC-DC CONV 500W SEVCON 622-11211 ABS UNITS	1
29	20-07736	ELECTRICAL PANEL MOUNT PLATE NOTE: Superseded by 26-08120.	1
30	40-07671	ASSY MBB GENERIC 15MY IMPL NOTE: NOTE: Need to provide motorcycle VIN in shipping notes.	1
31	90-02515	HEXAGON SOCKET HEAD CAP SCREW ISO 4762 M4X12-8.8 ZM-F-01 REV 03	1
32	90-02103	WASHER ISO 7089 6-200HV ZM-F-01 REV 02	1

33	90-03236	PREVAILING TORQUE TYPE NUT DIN 985 M8-10 ZM-F-01 REV 02	1
34	90-02098	HEXAGON SOCKET HEAD CAP SCREW ISO 4762 M8X40-8.8 ZM-F-01 REV 02	1
35	90-02104	WASHER ISO 7089 -8-200 HV ZM-F-01 REV 02	1
36	90-02109	HEXAGON SOCKET BUTTON HEAD CAP SCREW ISO 7380 M5X12-8.8 ZM-F-01 REV 03	1
37	45-08123	CALEX CHARGER ASSEMBLY 1300W REG 10.5 EMC COMPLIANT NOTE: Supersedes 40-08065 and 40-05976.	1
38	46-08034	ASSY BATTERY SDS 4-MOD 16MY IMPL NOTE: Motorcycle VIN#, Case# or Claim# must be provided when ordering. NOTE: Supersedes part number 40-07614. NOTE: NOTE: FOR INSTALLING IN 2014 MODELS, INCLUDE 12-08080 IN THE ORDER. IN CASE OF THE BIKE HAVING A POWER TANK, ALSO INCLUDE 12-08011	1
39	40-08031	BMS PCB ASSY POTTED 17MY IMPL NOTE: PLEASE INCLUDE VIN# OF BIKE AND BATTERY SERIAL # FOR PROGRAMMING PURPOSES NOTE: FOR FX/FXP, IF BATTERY SERIAL NUMBER STARTS WITH 14SG**** PLEASE ORDER 41-06419 NOTE: Super seeded pn:40-07232	1
40	90-02102	WASHER UNIVERSAL (SIZE 1)	1
41	90-05061-3	WIDGET	1
42	20-05252	S/DS/SR BATTERY CASE FRONT	1
43	20-04094	PLUG DIAG PORT 24.50 THRU 26.00 MM 12MY IMPL	1
44	80-08003	BATTERY FRONT UPPER FILLER PLUG	1
45	90-02054	PREVAILING TORQUE TYPE NUT DIN 985 M6-8 ZM-F-01 REV 02	1
46	45-06774	DISC HORN K70/H12 V WITH BLACK ZINC	1
47	90-02128	HEXAGON SOCKET BUTTON HEAD CAP SCREW ISO 7380 M8X20-8.8 ZM-F-01 REV 03	1
48	20-07073	SDS FRAME MOUNTED HORN BRACKET	1
49	PA-216	BATTERY BOX SCREW 90-07124	1
50	90-02937	M8X14MM BREAK AWAY HEX BOLT NOTE: One Time Use Bolt	1
51	20-05202	KEYSWITCH LOCK AND TANK BAG LOCK COMBO KIT NOTE: This Kit includes an ignition lock (45-02692) and a tank bag/helmet lock (p/n 20-05044) that have been keyed alike with two keys.	1
52	PA-217	BATTERY CONTACTOR TOP COVER 46-08045-1	1
53	PA-218	BATTERY BOX SCREW 90-07124	1
54	PA-219	BATTERY BOX SCREW 90-07125	1
55	20-07062	SDS TRIPLE CLAMP HARNESS SUPPORT	1

56	10-07504	<p>12V ACCESSORY SOCKET KIT - SDS</p> <p>NOTE: Charge a GPS, smart phone or mp3 player using the Zero Motorcycles 12V Accessory Socket Kit. Designed to connect directly to your motorcycle{###}'s power port harness, the accessory socket enables you to charge small devices that have a cigarette lighter plug. The accessory outlet is rated up to 10 amps/120 watts. This kit includes all mounting hardware for installation on the 2014 and later Zero S, Zero DS and Zero SR motorcycles.</p> <p>NOTE: 2014 [Zero SR, Zero S, Zero DS] 2015 [Zero SR, Zero S, Zero DS] 2016-2017 [Zero SR, Zero S, Zero DS, Zero DSR]</p>	1
57	90-02054-1	M6 X 8MM NUT	1
58	90-02103	WASHER ISO 7089 6-200HV ZM-F-01 REV 02	1
59	40-08030	<p>DASH LCD (ABS) BUG LOGO</p> <p>NOTE: Applicable 14MY-16MY</p>	1
60	PA-220	BRAKE LIGHT SWITCH SCREW	1
61	PA-221	<p>BRAKE LIGHT SWITCH</p> <p>NOTE: Not sold separately. Please order the Master Cylinder.</p>	1