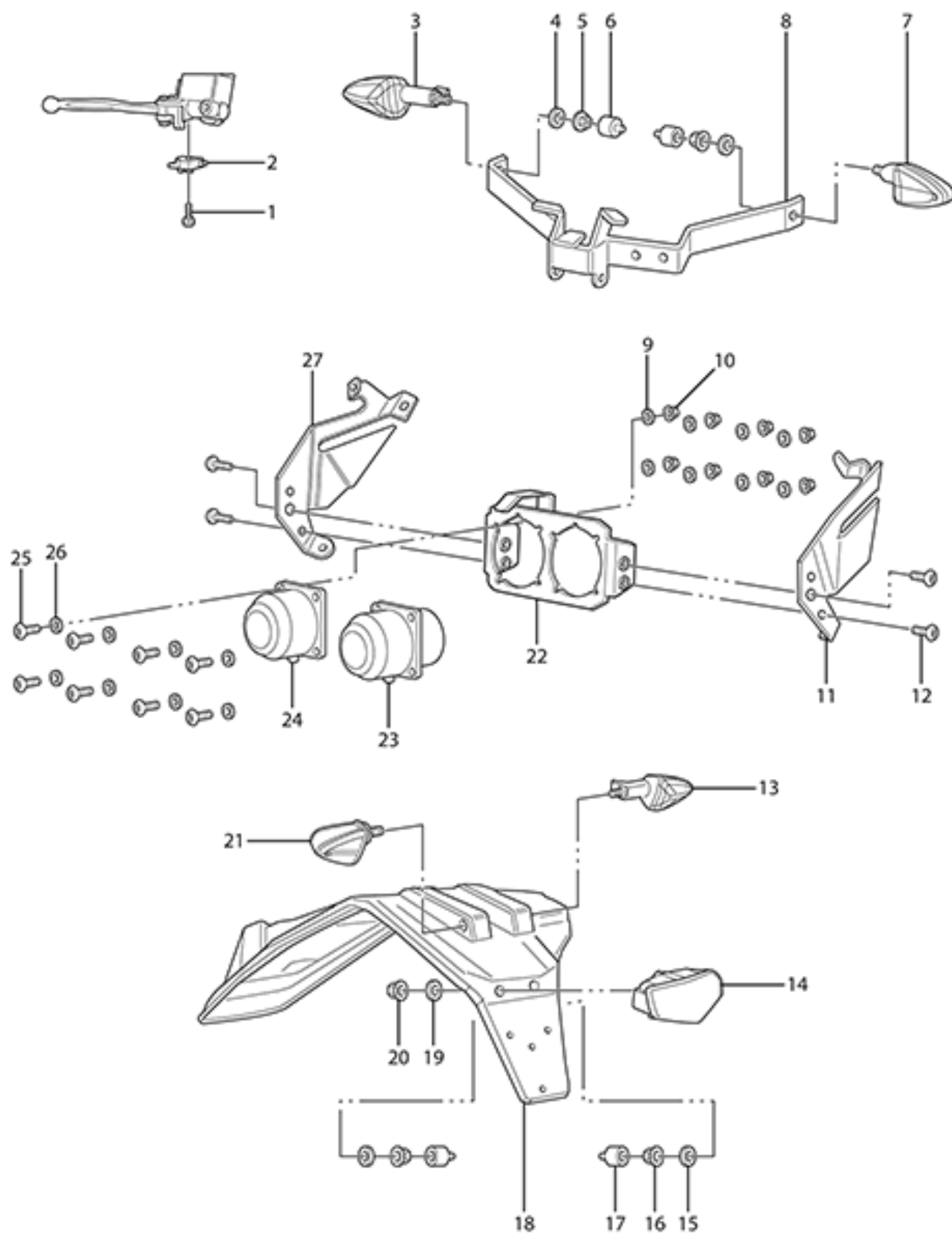


Zero Motocycles
FX 2014 Exploded Views

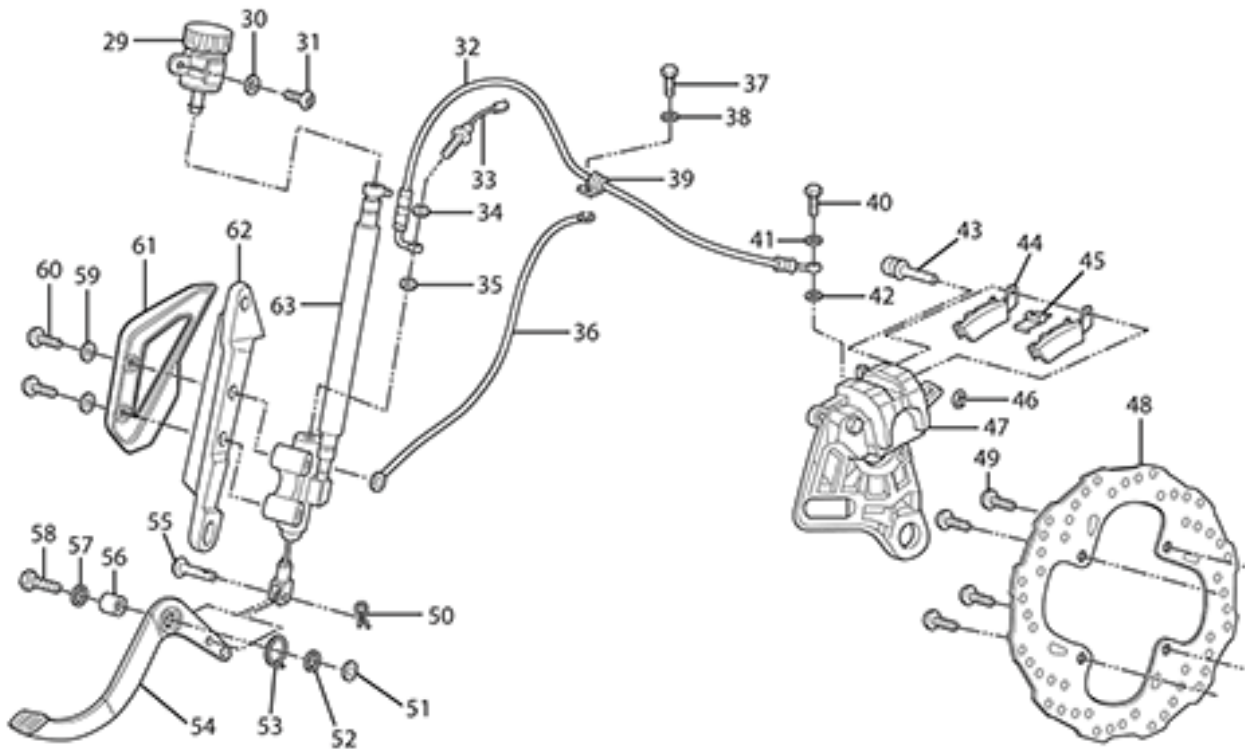
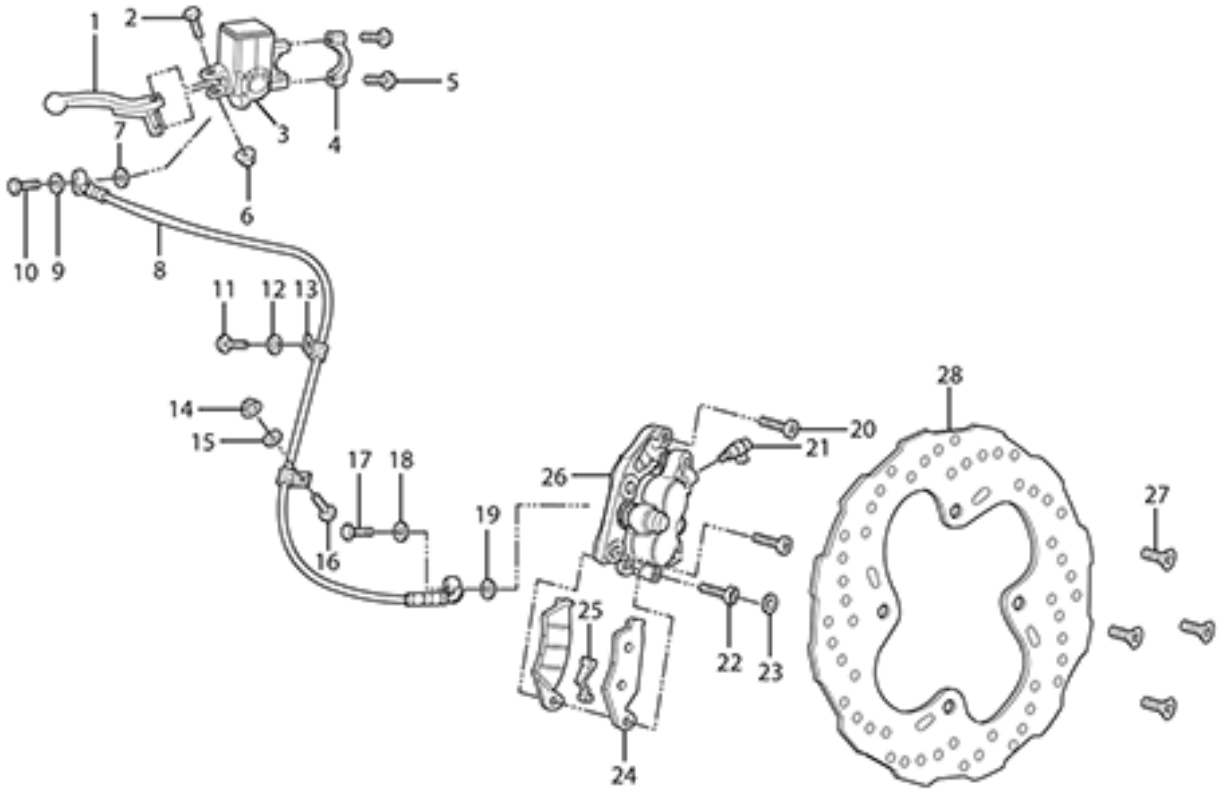
ZEV0001 - Lighting



ZEV0001 - Lighting

Callout	Part Number	Part Name	Qty. per Motorcycle
1	PA-61	BRAKE SWITCH SCREW	0
2	PA-62	BRAKE SWITCH NOTE: Not sold separately. Please order the Master Cylinder.	0
3	65-03462	TURN SIGNAL FR-RH RR-LH	1
4	90-02043	TOOTHED LOCK WASHER WITH EXTERNAL TEETH DIN 6797 A M10-B85 ZM-F-01 REV 02	2
5	90-02072	HEXAGON THIN NUT ISO 4035 M10-04 ZM-F-01 REV 02	2
6	20-03146	TURN SIGNAL HEX NUT CAP	2
7	65-03463	TURN SIGNAL FR-LH RR-RH	1
8	26-08040	DASH SUPPORT BRACKET STEEL	1
9	PA-63	HEADLIGHT WASHER 4MM FLAT	0
10	PA-64	HEADLIGHT NUT 4MM NYLOCK NUT	0
11	20-06678	XX HEADLIGHT MOUNT LEFT SIDE	1
12	90-02414	HEXAGON SOCKET BUTTON HEAD SCREW ISO 7380 M8X12-8.8 ZM-F-01 REV 03	4
13	65-03463	TURN SIGNAL FR-LH RR-RH	1
14	65-00600	TAIL LIGHT	1
15	90-02043	TOOTHED LOCK WASHER WITH EXTERNAL TEETH DIN 6797 A M10-B85 ZM-F-01 REV 02	2
16	90-02072	HEXAGON THIN NUT ISO 4035 M10-04 ZM-F-01 REV 02	2
17	20-03146	TURN SIGNAL HEX NUT CAP	2
18	24-04451	X/MX TAIL POD	1
19	90-02103	WASHER ISO 7089 6-200HV ZM-F-01 REV 02	10
20	90-02071	HEXAGON NUT ISO 4032 M6-8 ZM-F-01 REV 02	1
21	65-03462	TURN SIGNAL FR-RH RR-LH	1
22	20-06042	HEADLIGHT PIVOT BRACKET	1
23	65-06401	14MY XX HEADLIGHT LOW BEAM	1
24	65-06400	14MY XX HEADLIGHT HIGH BEAM	1
25	PA-65	HEADLIGHT BOLT HEX HEAD 4MM-0.70X15MM	0
26	PA-66	HEADLIGHT WASHER 4MM FLAT	0
27	20-06677	XX HEADLIGHT MOUNT RIGHT SIDE	1

ZEV0002 - Brakes

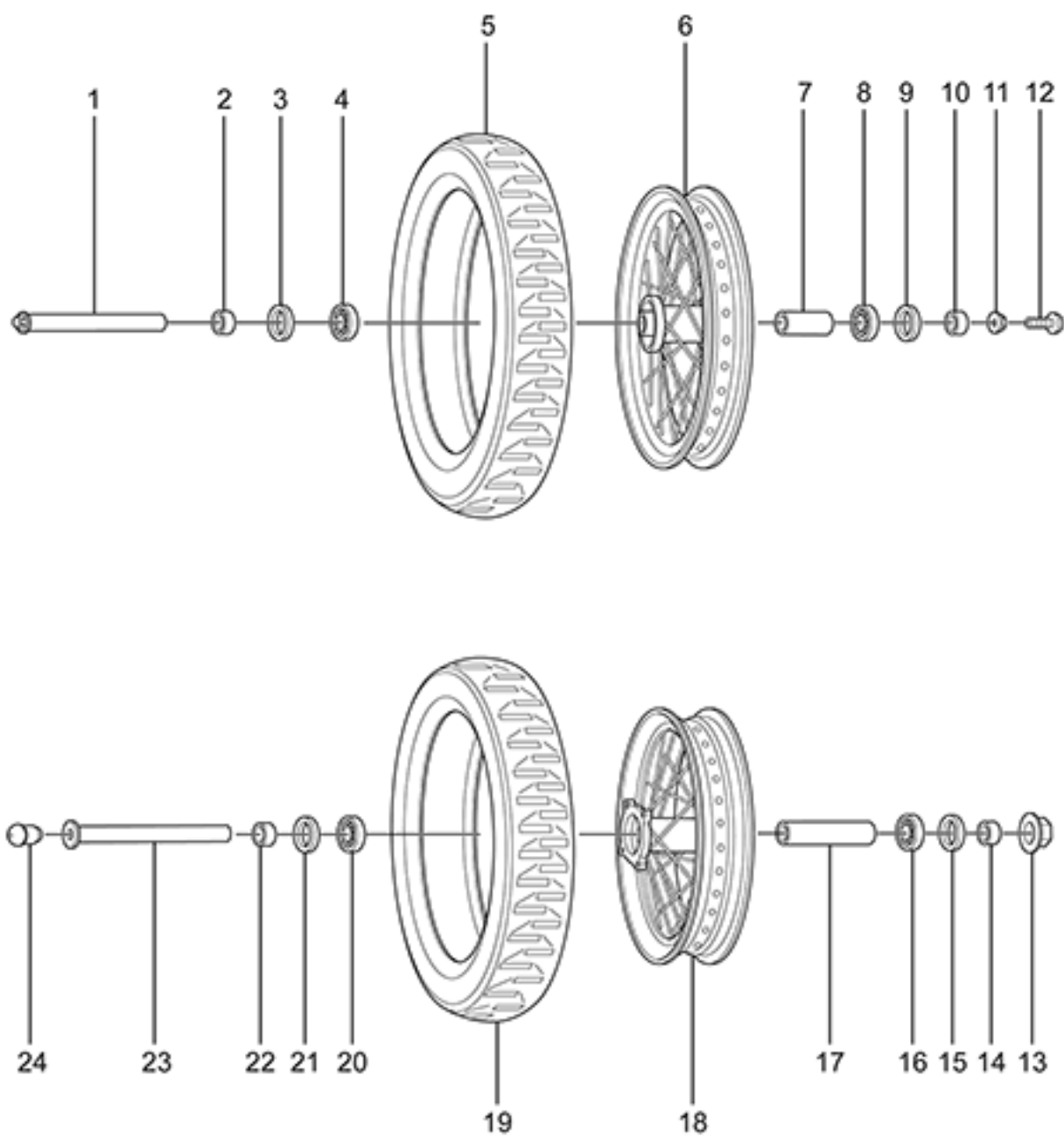


ZEV0002 - Brakes

Callout	Part Number	Part Name	Qty. per Motorcycle
1	10-05717-01	NISSIN FRONT BRAKE LEVER 13/14MY	1
2	25-04796	FR BRAKE MC ASSY 133-M00-94E NISSIN	0
3	25-04796	FR BRAKE MC ASSY 133-M00-94E NISSIN	1
4	PA-2	MASTER CYLINDER CLAMP	0
5	PA-3	MASTER CYLINDER CLAMP BOLT	0
6	25-04796	FR BRAKE MC ASSY 133-M00-94E NISSIN	0
7	PA-5	GASKET	0
8	25-07146	FX/DS/MX FRONT BRAKE LINE ASSY	1
9	PA-6	GASKET	0
10	PA-7	BANJO BOLT	0
11	90-02545-3	P CLAMP TO TRIPLE CLAMP BOLT	1
12	90-02103	WASHER ISO 7089 6-200HV ZM-F-01 REV 02	10
13	20-01758-1	BRAKE LINE GUIDE	1
14	90-02054	PREVAILING TORQUE TYPE NUT DIN 985 M6-8 ZM-F-01 REV 02	4
15	90-02103	WASHER ISO 7089 6-200HV ZM-F-01 REV 02	10
16	90-02124-1	BUTTON CAP SCREW M6 X 25	1
17	PA-8	BANJO BOLT	0
18	PA-9	GASKET	0
19	PA-10	GASKET	0
20	90-05038-2	M8 X 40 CALIPER MOUNTING BOLT	2
21	25-08051	JJUAN CALIPER/MASTER CYLINDER BLEED SCREW SDS/XMX	0
22	PA-124	CALIPER SLIDE PIN	0
23	PA-12	PIN PLUG	0
24	25-05940-01	13-14MY FRONT BRAKE PAD REPLACEMENT KIT	2
25	PA-13	ANTI-RATTLE CLIP	0
26	25-04164	FR BRAKE CALIPER ASSY 272-C00-363 NISSIN	1
27	90-03477-8	FRONT ROTOR BOLT M6 X 15 NOTE: Superseded by 90-07290.	6
28	25-06282	BRAKE ROTOR 240MM FIXED NOTE: Superseded by PN 25-08063	1
29	25-05243	REAR MASTER CYLINDER RESERVOIR	1
30	PA-14	WASHER	0
31	90-07273	HEXAGON SOCKET BUTTON HEAD CAP SCREW ISO 7380 M6X16-8.8 ZM-F-01 REV 03 ZM-L-01 REV 01	1
32	PA-89	BRAKE LINE	0
33	PA-90	BRAKE LIGHT SWITCH NOTE: Not sold separately. Please order the Master Cylinder.	0
34	PA-15	GASKET	0

35	PA-16	GASKET	0
36	56-04685	HARNESS GND T CLAMP	0
37	PA-17	BOLT	0
38	PA-18	WASHER	0
39	PA-19	CLAMP	0
40	PA-20	BANJO BOLT	0
41	PA-21	GASKET	0
42	PA-22	GASKET	0
43	25-08050	JJUAN CALIPER PAD PIN SDS/XMX	0
44	25-07021	MY14 FX REAR BRAKE PAD SET	1
45	PA-24	ANTI-RATTLE CLIP	0
46	PA-25	CALIPER SLIDE BOLT CLIP	0
47	25-04735	RR BRAKE CALIPER ASSY 252-C10-422 NISSIN	1
48	25-07621	BRAKE ROTOR 240MM FIXED WITH COUNTERBORE	1
49	90-07274	HEXAGON SOCKET BUTTON HEAD CAP SCREW ISO 7380 M8X25-8.8 ZM-F-01 REV 03 ZM-L-01 REV 01	4
50	PA-27	COTTER PIN	0
51	90-02100	WASHER ISO 7089 10-200 HV ZM-F-01 REV 02	3
52	20-02465	IGLIDE BEARING GFM-1416-06	1
53	20-05184	SPRING TORSION X BRAKE PEDAL	1
54	25-02449	X BRAKE PEDAL	1
55	90-02133	1/4 X 3/4 CLEVIS PIN STEEL ZINC	1
56	20-02455	X BRAKE PEDAL SPACER	1
57	20-02465	IGLIDE BEARING GFM-1416-06	1
58	90-07318	HEXAGON FLANGE BOLT DIN 6921 M10X35 10.9 ZM-F-01 REV 03 ZM-L-01 REV 01	1
59	PA-28	WASHER	0
60	PA-29	BOLT	0
61	25-07457	MASTER CYLINDER GUARD FOR J-JUAN MASTER CYLINDER	1
62	20-06295	REAR MASTER CYLINDER BRACKET XMX M6 THRU	1
63	312 91267 001 0 1	REAR MASTER CYLINDER	0

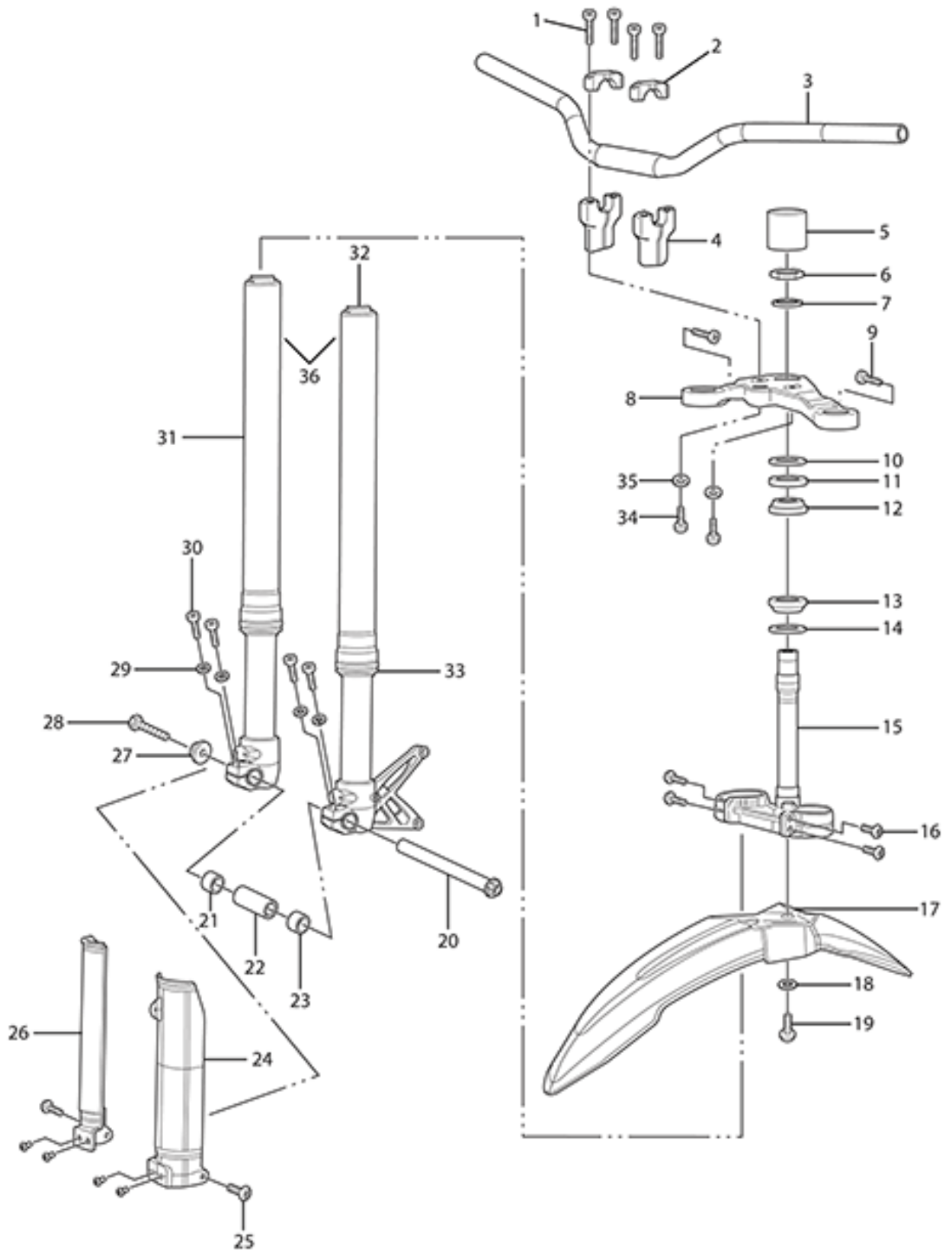
ZEV0003 - Wheel Assy



ZEV0003 - Wheel Assy

Callout	Part Number	Part Name	Qty. per Motorcycle
1	23-06388	AXLE FRONT 20MM DIA 232MM LENGTH	1
2	23-02590	SDS FRONT/XMX AXLE SPACER	1
3	23-02626	SHAFT SEAL 25X37X7MM	2
4	20-04119	WHEEL BEARING 6904 2RS	2
5	23-05505	IRC GP-110 TIRE, 3.00-21 51S NOTE: Used on the 2013 and 2014 Zero FX with the 23-05686 FX FRONT TUBE 13MY IMPL	0
6	23-08075	1.60X21" FRONT WIRE WHEEL ASSY 14MY 1065 SPOKE NOTE: Supersedes the 23-07217.	1
7	PA-31	INNER BEARING SPACER	0
8	20-04119	WHEEL BEARING 6904 2RS	2
9	23-02626	SHAFT SEAL 25X37X7MM	2
10	23-02590	SDS FRONT/XMX AXLE SPACER	1
11	23-05979	AXLE CAP, 2MM EU EDGE RADIUS	1
12	90-07268	HEXAGON SOCKET HEAD CAP SCREW ISO 4762 M8X25-10.9 ZM-F-01 REV 03 ZM-L-01 REV 01	0
13	90-05678	U-NUT M20X1.5 FN 27S 15H (REAR AXLE NUT) NOTE: Rear Axle Nut	1
14	23-04853	REAR WHEEL SPACER RIGHT 13MY IMPL	1
15	23-02626	SHAFT SEAL 25X37X7MM	2
16	20-04119	WHEEL BEARING 6904 2RS	2
17	PA-70	INNER BEARING SPACER	0
18	12-08076	14MY FX REAR WHEEL UPGRADE KIT NOTE: Superseding PN 23-07219 NOTE: Simple upgrade to a higher tensile strength wheel NOTE: Includes wheel, spacer, and dust seal	1
19	23-05506	IRC GP-110 TIRE, 4.10-18 59S NOTE: Used on the 2013 and 2014 Zero FX with the 23-05687 FX REAR TUBE 13MY IMPL	0
20	20-04119	WHEEL BEARING 6904 2RS	2
21	23-02626	SHAFT SEAL 25X37X7MM	2
22	23-05195	REAR WHEEL SPACER LEFT 13MY IMPL	1
23	23-08032	REAR AXLE 20MM HOLLOW, ROUNDED END	1
24	20-05792	AXLE COVER NOTE: USED ONLY ON EU FX	1

ZEV0004 - Steering System

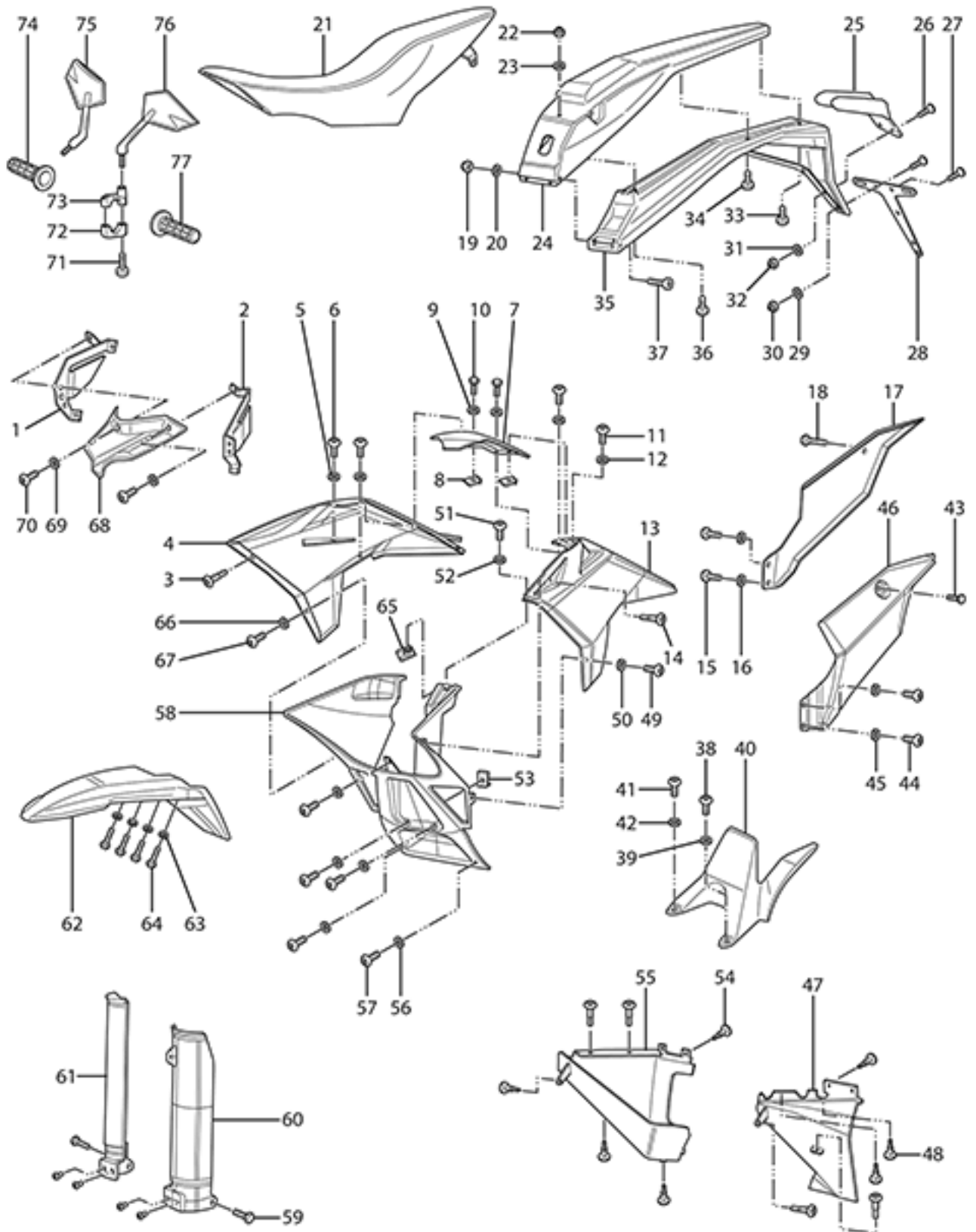


ZEV0004 - Steering System

Callout	Part Number	Part Name	Qty. per Motorcycle
1	90-07268	HEXAGON SOCKET HEAD CAP SCREW ISO 4762 M8X25-10.9 ZM-F-01 REV 03 ZM-L-01 REV 01	2
2	22-00687	S HANDLEBAR CLAMP	1
3	20-07243	LOW WIDE WIDTH HANDLEBAR	1
4	22-00688	S HANDLEBAR RISER	1
5	7205A99	41MM SOCKET	0
6	22-06279	STEERING STEM THIN NUT M27 X 1.5 X 8MM	1
7	20-06278	WASHER 41 - 27.5 X 2 MM	1
8	22-06114	XXM TRIPLE CLAMP UPPER 14MY IMPL	1
9	90-02094	HEXAGON SOCKET HEAD CAP SCREW ISO 4762 M8X25-10.9 ZM-F-01 REV 03	6
10	22-06257	STEERING STEM LOCK NUT M 30 X1.5 MM	1
11	20-06113	BEARING LIP SEAL OVERMOLDED 55MM OD NOTE: Superseded by 81-08045	2
12	20-06068	STEERING HEAD BEARING KOYO SAC3055-1	2
13	20-06068	STEERING HEAD BEARING KOYO SAC3055-1	2
14	20-06113	BEARING LIP SEAL OVERMOLDED 55MM OD NOTE: Superseded by 81-08045	2
15	22-06117	XXM LOWER TRIPLE CLAMP ASSY 14MY IMPL	1
16	90-02094	HEXAGON SOCKET HEAD CAP SCREW ISO 4762 M8X25-10.9 ZM-F-01 REV 03	6
17	24-04437-2	DS/X/MX FRONT FENDER XXM BLACK#1 NOTE: Does not apply to S and SR	1
18	90-02107	WASHER ISO 7093-1 5-200HV ZM-F-01 REV 02 NOTE: Does not apply to S and SR	4
19	90-07292	HEXAGON SOCKET BUTTON HEAD CAP SCREW ISO 7380 M5X16-8.8 ZM-F-11 REV 01 ZM-L-01 REV 01 NOTE: Does not apply to DS	1
20	23-06388	AXLE FRONT 20MM DIA 232MM LENGTH	1
21	23-02590	SDS FRONT/XXM AXLE SPACER	1
22	PA-72	INNER BEARING SPACER	0
23	23-02590	SDS FRONT/XXM AXLE SPACER	1
24	24-06692	FX/DS/MMX FORK GUARD RIGHT SIDE NOTE: Does not apply to S and SR	1
25	90-07427	HEXAGON FLANGE BOLT DIN 6921 OR ISO 4162 M6X12 ZM-F-01 REV 03 ZM-L-01 REV 01 NOTE: Does not apply to DS	4
26	24-06691	FX/DS/MMX FORK GUARD LEFT SIDE NOTE: Does not apply to S and SR	1
27	23-05979	AXLE CAP, 2MM EU EDGE RADIUS	1

28	PA-73	AXLE END CAP BOLT M8 - 1.25 X 20MM	0
29	90-02104	WASHER ISO 7089 -8-200 HV ZM-F-01 REV 02	10
30	90-07265	HEXAGON SOCKET HEAD CAP SCREW ISO 4762 M6X20-8.8 ZM-F-01 REV 03 ZM-L-01 REV 01	4
31	22-06095	MY14 FX RIGHT FORK LEG	1
32	22-06094	MY14 FX LEFT FORK LEG	1
33	22-07494	14MY FORK SEAL KIT	1
34	90-07259	HANDLE BAR RISER CAP SCREW M10X35	4
35	PA-74	WASHER	0
36	22-06093	FX FORK SET FASTACE 14MY	1

ZEV0005 - Body Trim



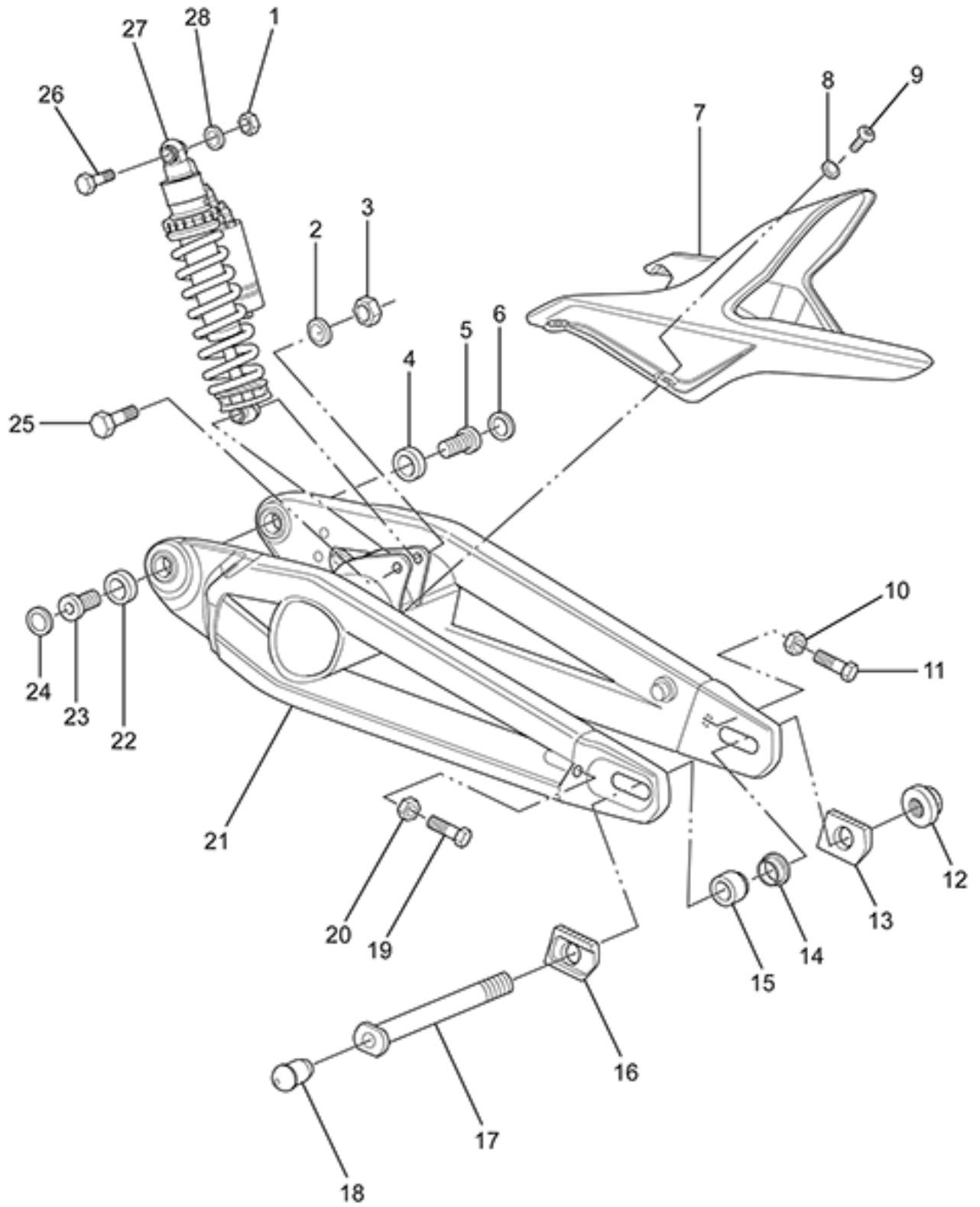
ZEV0005 - Body Trim

Callout	Part Number	Part Name	Qty. per Motorcycle
1	20-06677	XMV HEADLIGHT MOUNT RIGHT SIDE	1
2	20-06678	XMV HEADLIGHT MOUNT LEFT SIDE	1
3	20-03066	RIVET PUSH PUSH NYLON M6	1
4	24-05058-2	FAIRING FRONT RIGHT POLYPROPYLENE BLACK 13MY IMP	1
5	90-04085	WASHER M5 X 11 X 1 NYLON 6/6 BLACK	4
6	90-04084	HEXAGON SOCKET BUTTON HEAD CAP SCREW ISO 7380 M5X16-8.8 ZM-F-11 REV 03	4
7	24-07567	XMV TOP CENTER CONSOLE WITH MACHINE FEATURE TO CLEAR GUSSET	1
8	90-02140	CLIP-ON U-NUT M5X15.8DP	4
9	90-02101	HEADLIGHT MOUNTING WASHER	4
10	90-07285	HEXAGON FLANGE BOLT DIN 6921 OR ISO 4162 M5X16 ZM-F-01 REV 03 ZM-L-01 REV 01	4
11	90-04084	HEXAGON SOCKET BUTTON HEAD CAP SCREW ISO 7380 M5X16-8.8 ZM-F-11 REV 03	4
12	90-04085	WASHER M5 X 11 X 1 NYLON 6/6 BLACK	4
13	24-05059-2	FAIRING FRONT LEFT POLYPROPYLENE BLACK 13MY IMP	1
14	20-03066	RIVET PUSH PUSH NYLON M6	1
15	90-04084	HEXAGON SOCKET BUTTON HEAD CAP SCREW ISO 7380 M5X16-8.8 ZM-F-11 REV 03	4
16	90-04085	WASHER M5 X 11 X 1 NYLON 6/6 BLACK	4
17	24-03873-1	REAR NUMBER PLATE RIGHT SIDE BLACK#2	1
18	90-07284	HEX FLANGE BOLT M8X25	1
19	90-02053	PREVAILING TORQUE TYPE NUT DIN 985 M5-08 ZM-F-01 REV 02	8
20	90-02101	HEADLIGHT MOUNTING WASHER	4
21	24-06001	XMV SEAT	1
22	90-02053	PREVAILING TORQUE TYPE NUT DIN 985 M5-08 ZM-F-01 REV 02	8
23	90-02101	HEADLIGHT MOUNTING WASHER	4
24	24-04449-1	XMV BODY TAIL PP BLACK#2	1
25	24-05285	XMV REFLECTOR MOUNT BRACKET	1
26	PA-120	M5 X 9MM	0
27	PA-121	M5 X 9MM	0
28	24-05160	LICENSE PLATE BRACKET NOTE: ONLY USED ON EU/ AUSTRALIA/ UK REGIONS	1
29	90-02101	HEADLIGHT MOUNTING WASHER	4
30	90-02053	PREVAILING TORQUE TYPE NUT DIN 985 M5-08 ZM-F-01 REV 02	8
31	90-02101	HEADLIGHT MOUNTING WASHER	4

32	90-02053	PREVAILING TORQUE TYPE NUT DIN 985 M5-08 ZM-F-01 REV 02	8
33	90-05887	PHILIPS HEAD SHEET METAL SCREW 10 X 1/2	0
34	90-05887	PHILIPS HEAD SHEET METAL SCREW 10 X 1/2	0
35	24-04451	X/MX TAIL POD	1
36	90-02610	HEXAGON FLANGE BOLT DIN 6921 OR ISO 4162 M5X20 ZM-F-01 REV 02	4
37	90-02610	HEXAGON FLANGE BOLT DIN 6921 OR ISO 4162 M5X20 ZM-F-01 REV 02	4
38	90-04084	HEXAGON SOCKET BUTTON HEAD CAP SCREW ISO 7380 M5X16-8.8 ZM-F-11 REV 03	4
39	90-04085	WASHER M5 X 11 X 1 NYLON 6/6 BLACK	4
40	24-08157	REAR INNER FENDER NOTE: Supersedes part number 24-04438	1
41	90-04084	HEXAGON SOCKET BUTTON HEAD CAP SCREW ISO 7380 M5X16-8.8 ZM-F-11 REV 03	4
42	90-04085	WASHER M5 X 11 X 1 NYLON 6/6 BLACK	4
43	90-07284	HEX FLANGE BOLT M8X25	1
44	90-04084	HEXAGON SOCKET BUTTON HEAD CAP SCREW ISO 7380 M5X16-8.8 ZM-F-11 REV 03	4
45	90-04085	WASHER M5 X 11 X 1 NYLON 6/6 BLACK	4
46	24-03874-1	REAR NUMBER PLATE LEFT SIDE BLACK#2	1
47	24-06190	XMX CONTROLLER COVER L 14MY IMPL	1
48	90-03113	XMAS TREE CLIP .25" X .39" LG X .70" HD	10
49	90-04084	HEXAGON SOCKET BUTTON HEAD CAP SCREW ISO 7380 M5X16-8.8 ZM-F-11 REV 03	4
50	90-04085	WASHER M5 X 11 X 1 NYLON 6/6 BLACK	4
51	90-04084	HEXAGON SOCKET BUTTON HEAD CAP SCREW ISO 7380 M5X16-8.8 ZM-F-11 REV 03	4
52	90-04085	WASHER M5 X 11 X 1 NYLON 6/6 BLACK	4
53	90-02140	CLIP-ON U-NUT M5X15.8DP	4
54	20-03066	RIVET PUSH PUSH NYLON M6	1
55	24-06191	XMX CONTROLLER COVER R 14MY IMPL	1
56	90-04085	WASHER M5 X 11 X 1 NYLON 6/6 BLACK	4
57	90-04084	HEXAGON SOCKET BUTTON HEAD CAP SCREW ISO 7380 M5X16-8.8 ZM-F-11 REV 03	4
58	24-06043	XMX FAIRING CENTER	1
59	90-07427	HEXAGON FLANGE BOLT DIN 6921 OR ISO 4162 M6X12 ZM-F-01 REV 03 ZM-L-01 REV 01 NOTE: Does not apply to DS	4
60	24-06692	FX/DS/MMX FORK GUARD RIGHT SIDE NOTE: Does not apply to S and SR	1
61	24-06691	FX/DS/MMX FORK GUARD LEFT SIDE NOTE: Does not apply to S and SR	1
62	24-04437-2	DS/X/MX FRONT FENDER XMX BLACK#1 NOTE: Does not apply to S and SR	1

63	90-02107	WASHER ISO 7093-1 5-200HV ZM-F-01 REV 02 NOTE: Does not apply to S and SR	4
64	90-07292	HEXAGON SOCKET BUTTON HEAD CAP SCREW ISO 7380 M5X16-8.8 ZM-F-11 REV 01 ZM-L-01 REV 01 NOTE: Does not apply to DS	1
65	90-02140	CLIP-ON U-NUT M5X15.8DP	4
66	90-04085	WASHER M5 X 11 X 1 NYLON 6/6 BLACK	4
67	90-04084	HEXAGON SOCKET BUTTON HEAD CAP SCREW ISO 7380 M5X16-8.8 ZM-F-11 REV 03	4
68	24-07673	SHORT NOSE DUAL BEAM FLY-SCREEN	1
69	90-04085	WASHER M5 X 11 X 1 NYLON 6/6 BLACK	4
70	90-04084	HEXAGON SOCKET BUTTON HEAD CAP SCREW ISO 7380 M5X16-8.8 ZM-F-11 REV 03	4
71	90-07265	HEXAGON SOCKET HEAD CAP SCREW ISO 4762 M6X20-8.8 ZM-F-01 REV 03 ZM-L-01 REV 01	2
72	24-02961	MIRROR MOUNT CLAMP	1
73	24-02913	MIRROR MOUNT BODY LH THREAD	1
74	20-04154	GRIP RIGHT	1
75	24-04159	MIRROR ASSY LONG STEM RIGHT SIDE	1
76	24-04160	MIRROR ASSY LONG STEM LEFT SIDE	1
77	20-04153	GRIP LEFT	1

ZEV0006 - Rear Suspension

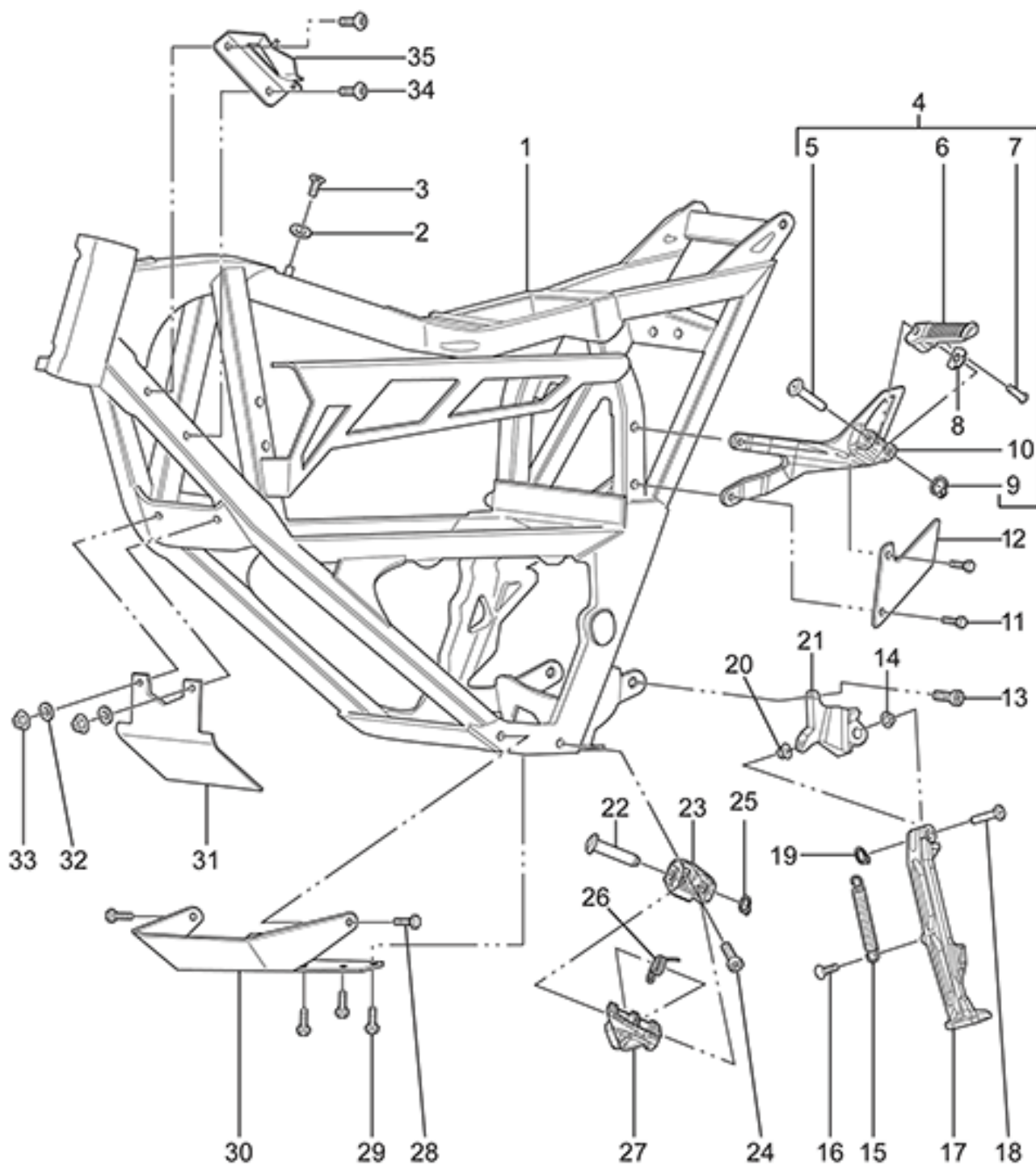


ZEV0006 - Rear Suspension

Callout	Part Number	Part Name	Qty. per Motorcycle
1	90-02050	PREVAILING TORQUE TYPE NUT DIN 985 M10-8 ZM-F-01 REV 02	2
2	90-02100	WASHER ISO 7089 10-200 HV ZM-F-01 REV 02	3
3	90-02050	PREVAILING TORQUE TYPE NUT DIN 985 M10-8 ZM-F-01 REV 02	2
4	20-06138	BEARING 6204 NOTE: Bearing used as swing arm bearing in some models and as the wheel bearing (qty of 5; 2 in front and three in rear wheel) in 2015 and later models. NOTE: Manufacturer part number is 6204-2RS	2
5	20-06130	STUB AXLE	2
6	20-06755	SWINGARM PIVOT BEARING SEAL PROTECTOR	2
7	24-04438	REAR INNER FENDER NOTE: Superseded by 24-08157	1
8	90-04085	WASHER M5 X 11 X 1 NYLON 6/6 BLACK	4
9	90-02109	HEXAGON SOCKET BUTTON HEAD CAP SCREW ISO 7380 M5X12-8.8 ZM-F-01 REV 03	8
10	90-05088	HEXAGON FLANGE NUT DIN 6923 M8-1.25 ZM-F-01 REV 03	2
11	90-03030	HEXAGON HEAD SCREW DIN 933 M8X40-10.9 ZM-F-01 REV 03	2
12	90-05678	U-NUT M20X1.5 FN 27S 15H (REAR AXLE NUT) NOTE: Rear Axle Nut	1
13	20-04738	REAR AXLE ADJUSTER PUSH BLOCK, NUT SIDE	1
14	23-04853	REAR WHEEL SPACER RIGHT 13MY IMPL	1
15	23-05195	REAR WHEEL SPACER LEFT 13MY IMPL	1
16	20-04737	REAR AXLE ADJUSTER PUSH BLOCK, HEAD SIDE	1
17	23-04736	AXLE 20MM HOLLOW NOTE: Superseded by pn:23-08032	1
18	20-05792	AXLE COVER NOTE: USED ONLY ON EU FX	1
19	90-03030	HEXAGON HEAD SCREW DIN 933 M8X40-10.9 ZM-F-01 REV 03	2
20	90-05088	HEXAGON FLANGE NUT DIN 6923 M8-1.25 ZM-F-01 REV 03	2
21	21-05849-1	X SWINGARM	1
22	20-06138	BEARING 6204 NOTE: Bearing used as swing arm bearing in some models and as the wheel bearing (qty of 5; 2 in front and three in rear wheel) in 2015 and later models. NOTE: Manufacturer part number is 6204-2RS	2
23	20-06130	STUB AXLE	2

24	20-06755	SWINGARM PIVOT BEARING SEAL PROTECTOR	2
25	90-05711	LOWER SHOCK EYE BOLT M10-1.5X60MM	2
26	90-07295	UPPER SHOCK BOLT FX 10X70MM	1
27	22-06105	FX SHOCK FASTACE 14MY	1
28	90-02100	WASHER ISO 7089 10-200 HV ZM-F-01 REV 02	3

ZEV0007 - Frame (Left)



ZEV0007 - Frame (Left)

Callout	Part Number	Part Name	Qty. per Motorcycle
1	20-06499	<p>XXM FRAME ASSEMBLY 14MY</p> <p>NOTE: Order 20-06068 steering bearings (2) with frame</p>	1
2	20-06439	SEAT KNOB 14MY IMPL	1
3	90-02059	<p>HEXAGON SOCKET COUNTERSUNK HEAD SCREW ISO</p> <p>10642 M6X18-8.8 ZM-F-01 REV 03</p>	1
4	10-07417	<p>PASSENGER PEGS KIT - 2014 FX</p> <p>NOTE: Take a friend for a ride on your 2014 Zero FX. With the passenger pegs kit, they will have a comfortable place for their feet as you introduce them to the thrilling acceleration of your motorcycle.</p> <p>NOTE: 2014 [Zero FX]</p>	1

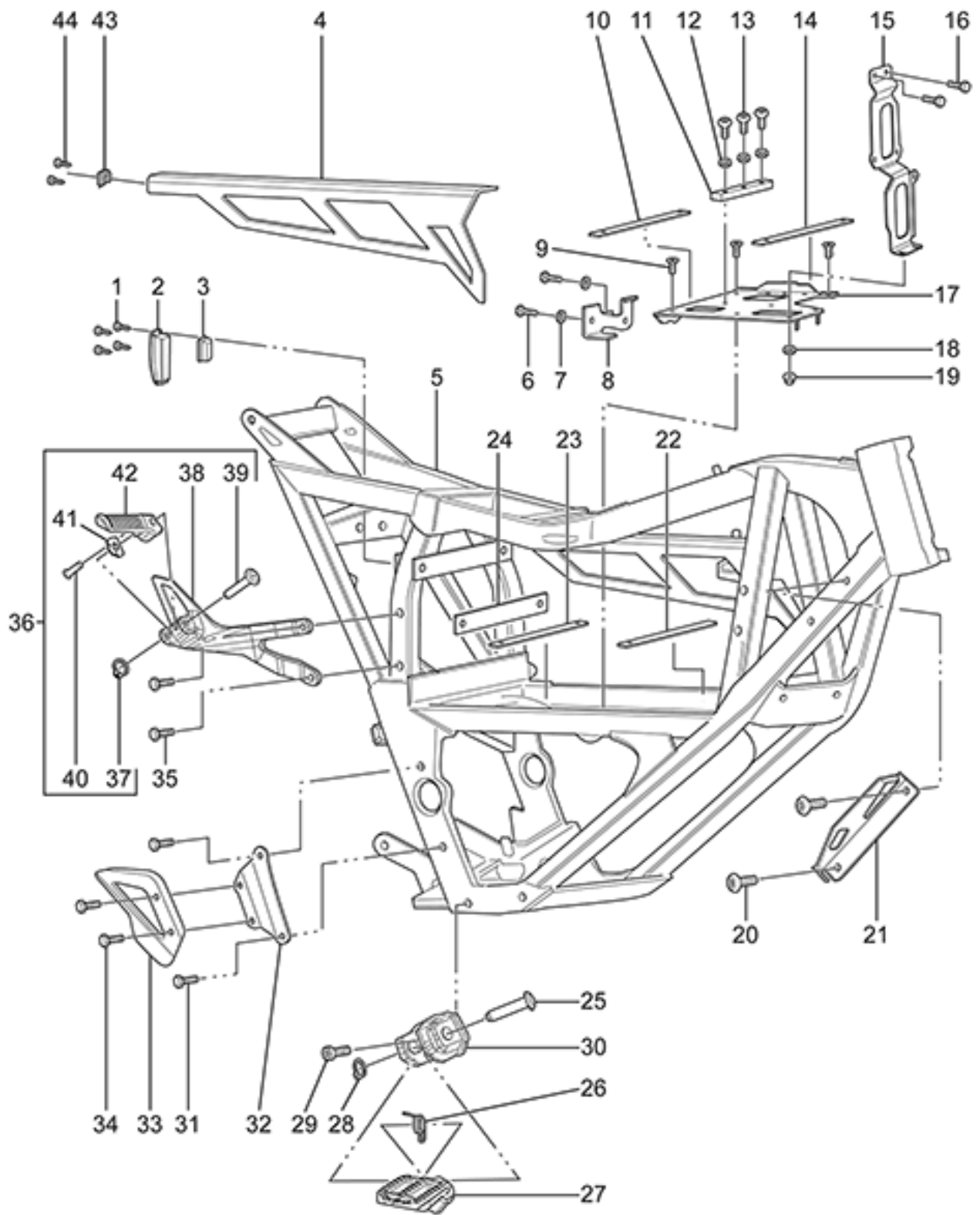
Part Detail for #4. PASSENGER PEGS KIT - 2014 FX

Callout	Part Number	Part Name	Qty. per Motorcycle
5	90-02725	CLEVIS PIN CUSTOM 10MM X 45L	1
6	20-05228	FOOTPEG LT PASSENGER	1
7	20-05404	FOOTPEG DETENT BALL MECHANISM	1
8	20-04279	FOOTPEG DETENT PLATE	1
9	90-02879	RETAINING RING 9MM SHAFT	1
10	20-04285	SDS PASSENGER PEG BRKT L	1

11	90-02613-8	SDS PASSENGER PEG BRKT L BOLT	0
12	20-06939	<p>PASSENGER PEG BRACKET HEEL GUARD LEFT</p> <p>NOTE: USED ONLY ON EU FX</p>	1
13	90-07277	<p>HEXAGON SOCKET THIN HEAD CAP SCREW DIN 7984</p> <p>M10X25-8.8 ZM-F-01 REV 03 ZM-L-01 REV 01</p>	4
14	90-02800	BUSHING FLANGE 0.375	2
15	20-00710	S KS SPRING OUT	1
16	90-07261	<p>HEXAGON SOCKET COUNTERSUNK HEAD SCREW ISO</p> <p>10642 M8X20-10.9 ZM-F-01 REV 03 ZM-L-01 REV 01</p>	2
17	20-05662	LONG KICKSTAND LEG W/MAGNET	1
18	90-02799	<p>CLEVIS PIN CUSTOM</p> <p>NOTE: Used to attach kickstand leg to mount.</p>	1
19	90-02837	E CLIP 0.375	2
20	90-02800	BUSHING FLANGE 0.375	2
21	20-06590	KICKSTAND MOUNT	1
22	90-02725-06	CLEVIS PIN CUSTOM 10MM X 45L	1
23	20-02723	CLEVIS FOOT PEG UNIVERSAL LEFT	1
24	90-07277	<p>HEXAGON SOCKET THIN HEAD CAP SCREW DIN 7984</p> <p>M10X25-8.8 ZM-F-01 REV 03 ZM-L-01 REV 01</p>	2

25	90-02879	RETAINING RING 9MM SHAFT	1
26	20-02727	TORSION SPRING, .678 OD .078 WIRE, CCW	1
27	20-02548	FOOTPEG, LEFT	1
28	90-07269	HEXAGON SOCKET HEAD CAP SCREW ISO 4762 M8X30-10.9 ZM-F-01 REV 03 ZM-L-01 REV 01	4
29	90-07269	HEXAGON SOCKET HEAD CAP SCREW ISO 4762 M8X30-10.9 ZM-F-01 REV 03 ZM-L-01 REV 01	4
30	20-03863	XXM HEAT SINK BASH GUARD	1
31	20-05036	HEAT SINK MOUNT	1
32	90-02103	WASHER ISO 7089 6-200HV ZM-F-01 REV 02	10
33	90-02053	PREVAILING TORQUE TYPE NUT DIN 985 M5-08 ZM-F-01 REV 02	8
34	90-04084	HEXAGON SOCKET BUTTON HEAD CAP SCREW ISO 7380 M5X16-8.8 ZM-F-11 REV 03	4
35	20-06911	MEANWELL AND HORN BRACKET	1

ZEV0008 - Frame (Right)



ZEV0008 - Frame (Right)

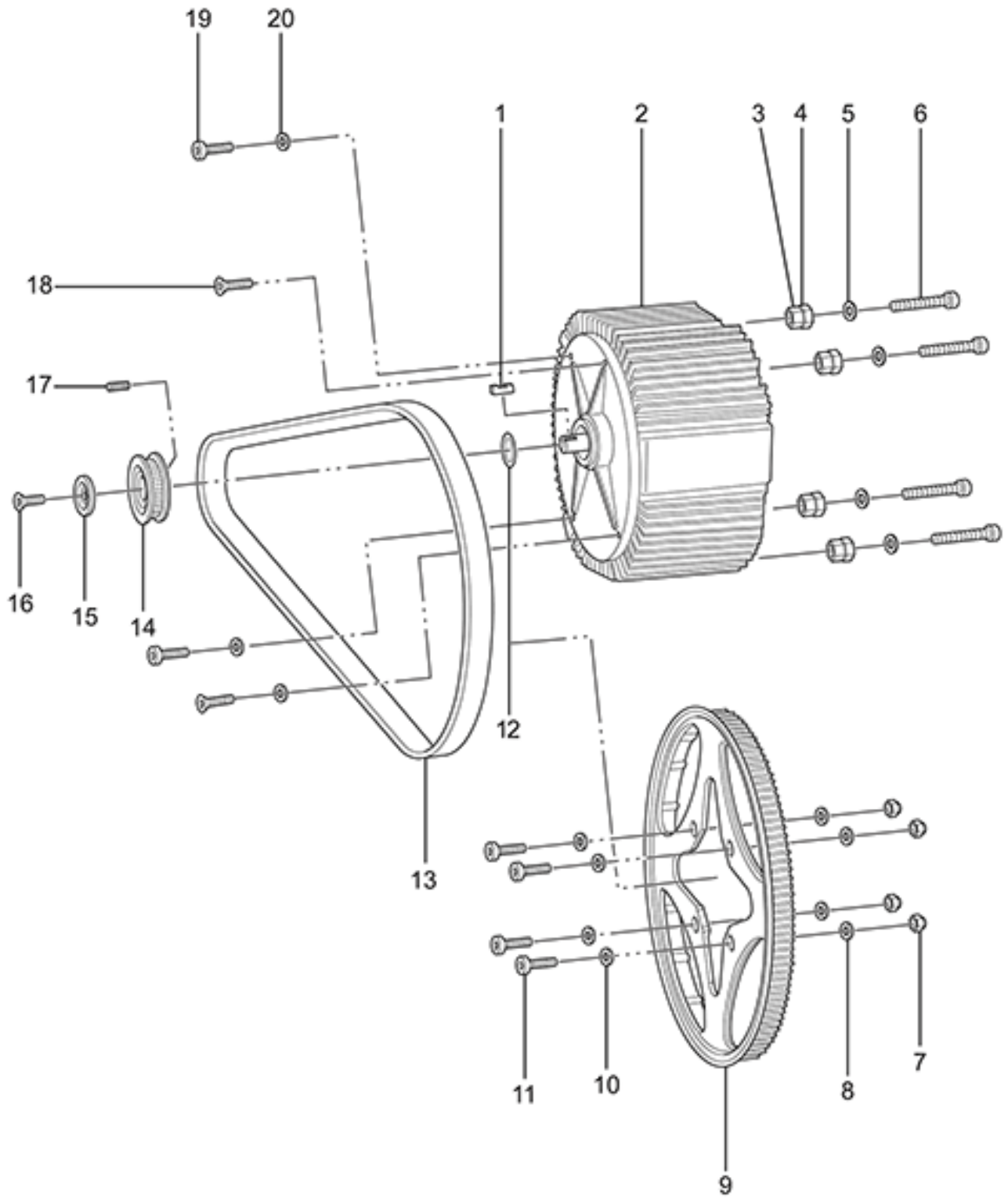
Callout	Part Number	Part Name	Qty. per Motorcycle
1	90-06857	HEXAGON SOCKET COUNTERSUNK HEAD SCREW M3X6 NOTE: Screws used to attach the latch mechanism to the XMX Battery Retaining Rail. Four per rail and two for the frame.	0
2	20-05296	PANEL MOUNT LATCH LOCKING C9101-2112 NOTE: Latch used with the XMX Battery Retaining Rail.	1
3	20-05296	PANEL MOUNT LATCH LOCKING C9101-2112 NOTE: Latch used with the XMX Battery Retaining Rail.	1
4	20-06404	XMX BATTERY RETAINING RAIL NOTE: Rail does not include latch (20-05296), screws (90-06857), foam or ZF insignia, which are ordered separately.	0
5	20-06499	XMX FRAME ASSEMBLY 14MY NOTE: Order 20-06068 steering bearings (2) with frame	1
6	90-02052	MBB TO FRAME FRONT	4
7	90-02102	WASHER UNIVERSAL (SIZE 1)	10
8	20-06862-1	MOUNT BRACKET AUX CHARGE XMX	1
9	90-05244	HEXAGON SOCKET COUNTERSUNK HEAD SCREW ISO 10642 M5X12-10.9 ZM-F-01 REV 03	4
10	20-05773	MODULE SLIDER GENERAL	2
11	20-05153	MODULE SEPERATOR BLOCK	1
12	90-02101	HEADLIGHT MOUNTING WASHER	0
13	90-02119	HEXAGON SOCKET BUTTON HEAD CAP SCREW M5X8-8.8	3
14	20-05774	MODULE SLIDER FRONT MODULE HORIZONTALS	2
15	20-05912	BIKE SIDE MODULE CONNECTOR HOLDER COMPLIANT MOUNT	1
16	90-04084	HEXAGON SOCKET BUTTON HEAD CAP SCREW ISO 7380 M5X16-8.8 ZM-F-11 REV 03	4
17	20-06863	XMX MODULE SUPPORT PLATFORM 14MY IMPL	1
18	90-02103	WASHER ISO 7089 6-200HV ZM-F-01 REV 02	10
19	90-02054	PREVAILING TORQUE TYPE NUT DIN 985 M6-8 ZM-F-01 REV 02	4
20	90-04084	HEXAGON SOCKET BUTTON HEAD CAP SCREW ISO 7380 M5X16-8.8 ZM-F-11 REV 03	4
21	20-06910	MEANWELL AND AUX CHARGE PORT BRACKET	1
22	20-05774	MODULE SLIDER FRONT MODULE HORIZONTALS	2
23	20-05773	MODULE SLIDER GENERAL	2
24	20-05773	MODULE SLIDER GENERAL	2
25	90-02725-06	CLEVIS PIN CUSTOM 10MM X 45L	2
26	20-02727	TORSION SPRING, .678 OD .078 WIRE, CCW	1
27	20-02549	FOOTPEG, RIGHT NOTE: Does not apply to S and SR	1

28	90-02879	RETAINING RING 9MM SHAFT	1
29	90-07277	HEXAGON SOCKET THIN HEAD CAP SCREW DIN 7984 M10X25-8.8 ZM-F-01 REV 03 ZM-L-01 REV 01	4
30	20-02724	CLEVIS FOOT PEG UNIVERSAL RIGHT	1
31	90-07268	HEXAGON SOCKET HEAD CAP SCREW ISO 4762 M8X25-10.9 ZM-F-01 REV 03 ZM-L-01 REV 01	2
32	20-06295	REAR MASTER CYLINDER BRACKET XMX M6 THRU	1
33	20-06939	PASSENGER PEG BRACKET HEEL GUARD LEFT NOTE: USED ONLY ON EU FX	1
34	90-07323	HEXAGON SOCKET BUTTON HEAD CAP SCREW ISO 7380 M6X25-8.8 ZM-F-01 REV 03 ZM-L-01 REV 01	2
35	90-02613-9	SDS PASSENGER PEG BRKT L BOLT	0
36	10-07417	PASSENGER PEGS KIT - 2014 FX NOTE: Take a friend for a ride on your 2014 Zero FX. With the passenger pegs kit, they will have a comfortable place for their feet as you introduce them to the thrilling acceleration of your motorcycle. NOTE: 2014 [Zero FX]	1

Part Detail for #36. PASSENGER PEGS KIT - 2014 FX

Callout	Part Number	Part Name	Qty. per Motorcycle
37	90-02879	RETAINING RING 9MM SHAFT	1
38	20-04284	SDS PASSENGER PEG BRKT R NOTE: superseded by 20-07604	1
39	90-02725	CLEVIS PIN CUSTOM 10MM X 45L	1
40	20-05404	FOOTPEG DETENT BALL MECHANISM	1
41	20-04279	FOOTPEG DETENT PLATE	1
42	20-05227	FOOTPEG RT PASSENGER	1

43	20-05296	PANEL MOUNT LATCH LOCKING C9101-2112 NOTE: Latch used with the XMX Battery Retaining Rail.	1
44	90-06857	HEXAGON SOCKET COUNTERSUNK HEAD SCREW M3X6 NOTE: Screws used to attach the latch mechanism to the XMX Battery Retaining Rail. Four per rail and two for the frame.	0

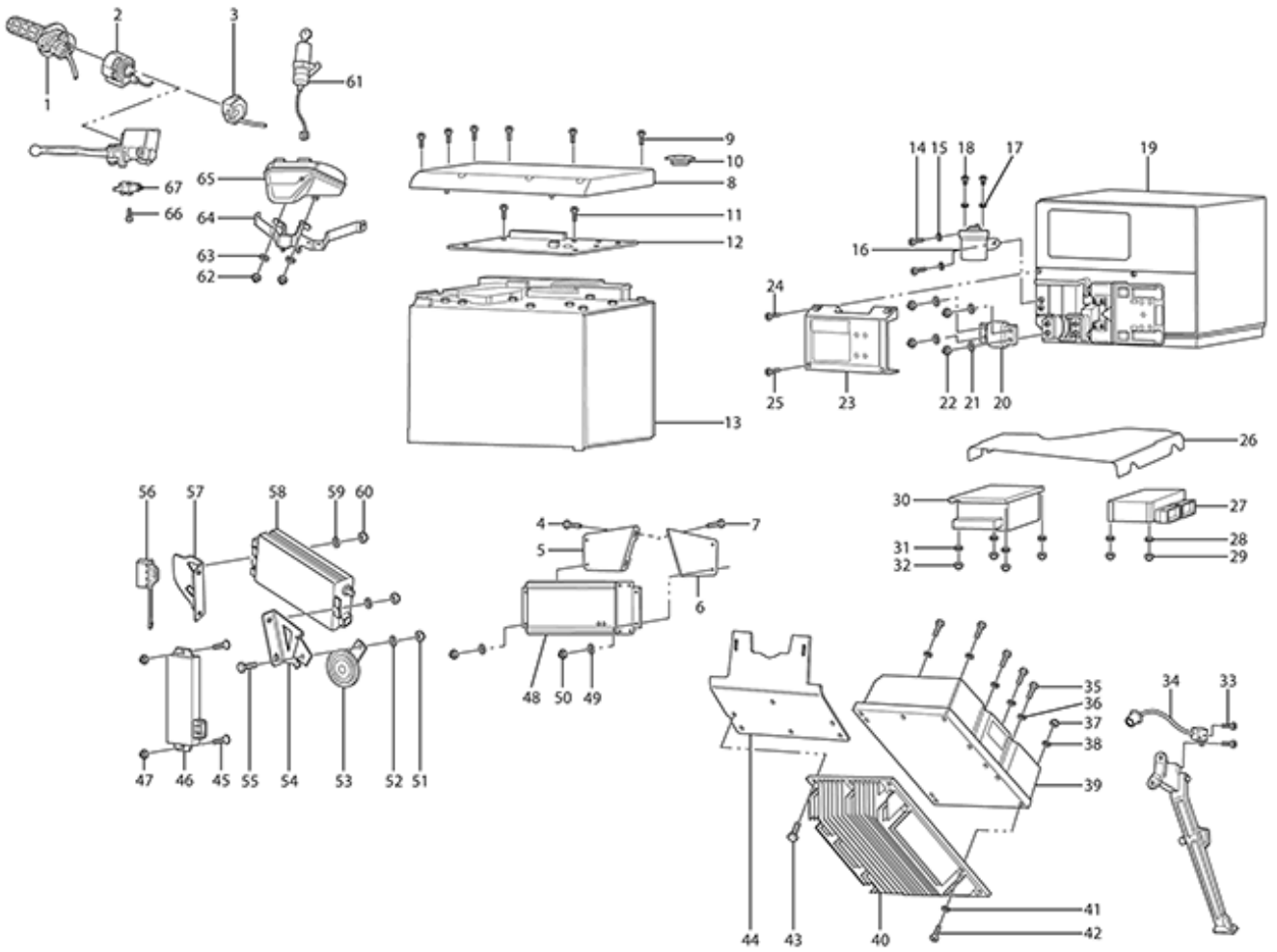


ZEV0009 - Motor and Drive Systems

Callout	Part Number	Part Name	Qty. per Motorcycle
1	30-06745	SHAFT KEY .25 MOTOR SPROCKET NOTE: Motor Sprocket	1
2	12-08033	ZERO FX 75-5 MOTOR REPLACEMENT KIT NOTE: Must Provide Warranty Claim and VIN# when ordering NOTE: old part #30-0770	1
3	20-04774	MOTOR JACK SCREW INNER	1
4	20-04773	MOTOR JACK SCREW OUTER	1
5	90-02104	WASHER ISO 7089 -8-200 HV ZM-F-01 REV 02	10
6	90-05179	HEXAGON SOCKET HEAD CAP SCREW ISO 4762 M8X60-8.8 ZM-F-01 REV 03	3
7	90-03236	PREVAILING TORQUE TYPE NUT DIN 985 M8-10 ZM-F-01 REV 02	4
8	90-02104	WASHER ISO 7089 -8-200 HV ZM-F-01 REV 02	10
9	30-03672	SPROCKET REAR BELT DRIVE 132T, 8MM PITCH, 17MM WIDE CASTING NOTE: Please order 30-04051	1
9	30-04051	SPROCKET REAR BELT DRIVE 132T, 8MM PITCH, 17MM WIDE FINISHED	1
9	30-05090	65T 520 SPROCKET 132 MM BOLT CIR	1
10	90-02104	WASHER ISO 7089 -8-200 HV ZM-F-01 REV 02	10
11	90-03248	HEXAGON SOCKET THIN HEAD CAP SCREW M8X30-8REAR SPROCKET	4
12	30-05502	MOTOR SHAFT SPACER 1.5 MM FOR 1" SHAFT	1
13	30-08084	BELT DRIVE, 220T, 8MM PITCH, 14MM WIDE, NEW LOGO	1
14	30-04890	12T SPROCKET 520 CHAIN 1	1
14	30-03656	SPROCKET FRONT, BELT DRIVE 25T, 8MM PITCH, 15MM WIDE 1	1
15	20-05453	LOW PROFILE BELT SPROCKET MOTOR SHAFT TOPHAT	1
16	90-02056	HEXAGON SOCKET COUNTERSUNK HEAD SCREW M10X25-8.8 MOTOR SHAFT NOTE: Bolt used to hold front sprocket in place onto the motor shaft. NOTE: Sprocket	1
17	90-07298	HEXAGON SOCKET SET SCREW CUP POINT KNURLED ISO 4029 TYPE V M4X6 ZM-F-01 REV 03 ZM-L-01 REV 01 NOTE: 2 set screws are needed for an SR motor.	1
18	90-08037	HEXALOBULAR (6 LOBE) SOCKET FLAT HEAD COUNTERSUNK SCREW ISO 14582 M8X30-10.9 ZM-F-01 REV 04 NOTE: Used for both drive side rear motor mount or rear sprocket mounting depending on model. NOTE: Supersedes 90-03223.	2

19	90-02096	MOTOR MOUNTING LEFT FRONT TOP AND LEFT FRONT BOTTOM BOLT	3
20	90-02104	WASHER ISO 7089 -8-200 HV ZM-F-01 REV 02	10

ZEV0010 - Electronics



ZEV0010 - Electronics

Callout	Part Number	Part Name	Qty. per Motorcycle
1	40-04069	ASSY THROTTLE 0-5K 4WY	1
2	40-06054	KILL MODE START SWITCH	1
3	45-02693	HANDLEBAR SWITCH L	1
4	90-07285	HEXAGON FLANGE BOLT DIN 6921 OR ISO 4162 M5X16 ZM-F-01 REV 03 ZM-L-01 REV 01	4
5	20-05290	MEANWELL MOUNTING BRACKET UPPER RIGHT XMX	1
6	20-05289	MEANWELL MOUNTING BRACKET UPPER LEFT XMX	1
7	90-07285	HEXAGON FLANGE BOLT DIN 6921 OR ISO 4162 M5X16 ZM-F-01 REV 03 ZM-L-01 REV 01	4
8	20-06197	MODULE BMS COVER 14 MY IMPL	0
9	PA-106	PASSENGER CLEVIS BRACKET BOLT 8MM - 1.25 X 25MM	0
10	PA-107	POWER PACK PLUG	0
11	PA-108	M4 X 6MM HEX HEAD BOLT	0
12	41-06419-08	14MY BMS MODULE NOTE: PLEASE INCLUDE VIN# OF BIKE AND BATTERY SERIAL # FOR PROGRAMMING PURPOSES	1
13	46-08032	ZF3.3 POWER PACK MODULE (2014-2016) NOTE: Z-Force® power pack technology has been revolutionizing the electric motorcycle industry since 2007 when the first Zeros started rolling out of the Santa Cruz factory. The goal: pack more energy into less space. Using state-of-the-art lithium-ion cell chemistry and advanced battery management systems, the ZF3.3 Power Pack Module offers incredible power density and versatility. Zero Motorcycles is the first electric motorcycle manufacturer to feature hot-swappable modules. The Zero FX and Zero FXS can be ridden using either one or two ZF3.3 modules. Modules can be moved between compatible motorcycles quickly, without concern regarding the state-of-charge or relative age of the accompanying module. NOTE: 2014-2016 [Zero FX, FXS, MMX] - VIN# or Warranty Claim Number Must Be Provided At Time Of Order To Be Covered Under Warranty.	0
14	90-05604	HEXAGON SOCKET COUNTERSUNK HEAD SCREW ISO 10642 M4X16-8.8 ZM-F-01 REV 03	2
15	90-02102	WASHER UNIVERSAL (SIZE 1)	10
16	45-08091	CONTACTOR GIGAVAC 12/40VDC MODULAR NOTE: Superseded by PN 45-08135	1
17	90-02101	HEADLIGHT MOUNTING WASHER	4
18	PA-110	M5 X10MM BUTTON HEAD HEX BOLT	0
		ZF3.3 POWER PACK MODULE (2014-2016) NOTE: Z-Force® power pack technology has been revolutionizing the electric motorcycle industry since 2007 when	

the first Zeros started rolling out of the Santa Cruz factory. The goal: pack more energy into less space. Using state-of-the-art lithium-ion cell chemistry and advanced battery management systems, the ZF3.3 Power Pack Module offers incredible power density and versatility. Zero Motorcycles is the first electric motorcycle manufacturer to feature hot-swappable modules. The Zero FX and Zero FXS can be ridden using either one or two ZF3.3 modules. Modules can be moved between compatible motorcycles quickly, without concern regarding the state-of-charge or relative age of the accompanying module.

NOTE: 2014-2016 [Zero FX, FXS, MMX] - VIN# or Warranty Claim Number Must Be Provided At Time Of Order To Be

19	46-08032	Covered Under Warranty.	0
20	PA-112	POWER PACK FUSE	0
21	90-02102	WASHER UNIVERSAL (SIZE 1)	10
22	90-02052	MBB TO FRAME FRONT	8
23	20-05629	MODULE FUSE COVER 14 MY IMPL	1
24	PA-113	M4 X 8MM HEX HEAD BOLT	0
25	PA-114	M4 X 35MM HEX HEAD BOLT	0
26	24-05783	XXM CONTROLLER FORMEX TOP	1
27	40-06462	ASSY MBB GENERIC 14MY IMPL NOTE: Please provide motorcycle VIN# and/or Case number for programming at Zero Motorcycles.	1
28	90-02102	WASHER UNIVERSAL (SIZE 1)	10
29	90-02052	MBB TO FRAME FRONT	4
30	60-04015	DC-DC CONV SEVCON 622-11202 NON-EMC	1
31	90-02102	WASHER UNIVERSAL (SIZE 1)	10
32	90-02052	MBB TO FRAME FRONT	4
33	90-07130	HEXAGON SOCKET HEAD CAP SCREW ISO 4762 M4X10-8.8 ZM-F-01 REV 03 ZM-L-01 REV 01	2
34	PA-115	KICK STAND SWITCH	0
35	90-02092	SIZE 4 CONTROLLER BOLTS	5
36	90-02104	WASHER ISO 7089 -8-200 HV ZM-F-01 REV 02	10
37	90-02071	HEXAGON NUT ISO 4032 M6-8 ZM-F-01 REV 02	1
38	90-02103	WASHER ISO 7089 6-200HV ZM-F-01 REV 02	10
39	60-07007	CONTROLLER SIZE 4 GEN 4 SEVCON NOTE: PLEASE INCLUDE VIN# OF BIKE FOR PROGRAMMING PURPOSES	1
40	20-06553	XXM HEATSINK MY14	1
41	90-02103	WASHER ISO 7089 6-200HV ZM-F-01 REV 02	10
42	90-03251	HEXAGON SOCKET HEAD CAP SCREW ISO 4762 M6X30-8.8 ZM-F-01 REV 03	4
43	90-07269	HEXAGON SOCKET HEAD CAP SCREW ISO 4762 M8X30-10.9 ZM-F-01 REV 03 ZM-L-01 REV 01	4
44	20-05036	HEAT SINK MOUNT	1

45	90-05604	HEXAGON SOCKET COUNTERSUNK HEAD SCREW ISO 10642 M4X16-8.8 ZM-F-01 REV 03	2
46	40-06495	ASSY CHARGER CONTROL UNIT 14MY IMPL CCU	1
47	90-02052	MBB TO FRAME FRONT	8
48	40-05326	ASSY XMXFX CHARGER 2S CONFIGURATION	0
49	90-02102	WASHER UNIVERSAL (SIZE 1)	10
50	90-02052	MBB TO FRAME FRONT	4
51	90-02071	HEXAGON NUT ISO 4032 M6-8 ZM-F-01 REV 02	1
52	90-02103	WASHER ISO 7089 6-200HV ZM-F-01 REV 02	10
53	45-06774	DISC HORN K70/H12 V WITH BLACK ZINC	1
54	20-06911	MEANWELL AND HORN BRACKET	1
55	90-07285	HEXAGON FLANGE BOLT DIN 6921 OR ISO 4162 M5X16 ZM-F-01 REV 03 ZM-L-01 REV 01	4
56	45-04864	CAVITY PLUG C13	1
57	20-06910	MEANWELL AND AUX CHARGE PORT BRACKET	1
58	40-05326	ASSY XMXFX CHARGER 2S CONFIGURATION	0
59	90-02102	WASHER UNIVERSAL (SIZE 1)	10
60	90-02052	MBB TO FRAME FRONT	4
61	45-02692	KEYSWITCH LOCK ZADI, IGNITION SWITCH NOTE: This part is the ignition switch and keys only. If you want a matching helmet lock for 16MY motorcycles and older, please order p/n 20-05202. If you want the key switch and a lock for a tank trunk, please order 27-08030. If you want a ignition and matching locks for tank trunk and storage trunks, please order part number 27-08044.	1
62	90-02054-1	M6 X 8MM NUT	12
63	90-02103	WASHER ISO 7089 6-200HV ZM-F-01 REV 02	10
64	26-08040	DASH SUPPORT BRACKET STEEL	1
65	40-08030	DASH LCD (ABS) BUG LOGO NOTE: Applicable 14MY-16MY	1
66	PA-118	BRAKE SWITCH SCREW	0
67	PA-119	BRAKE SWITCH NOTE: Not sold separately. Please order the Master Cylinder.	0