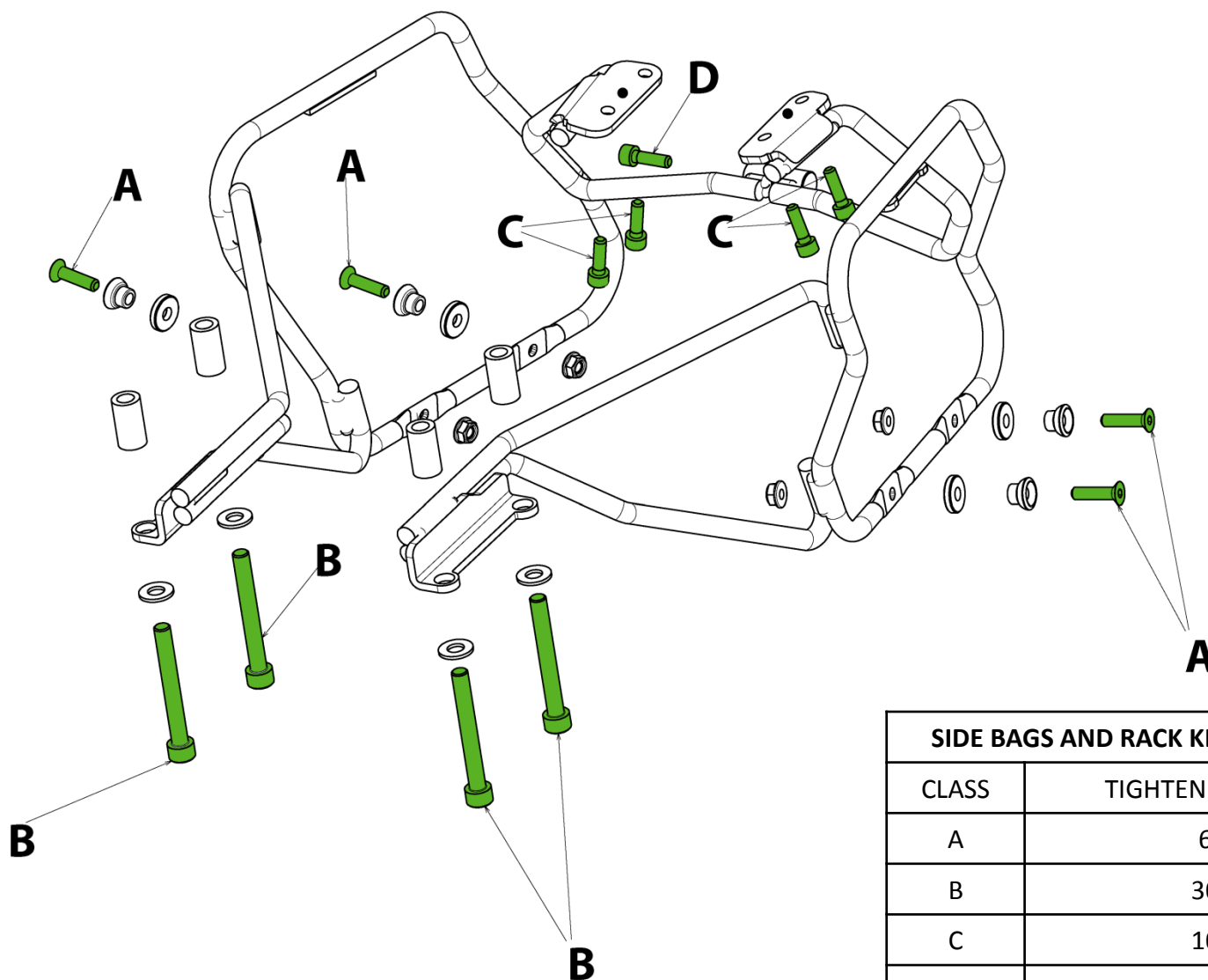




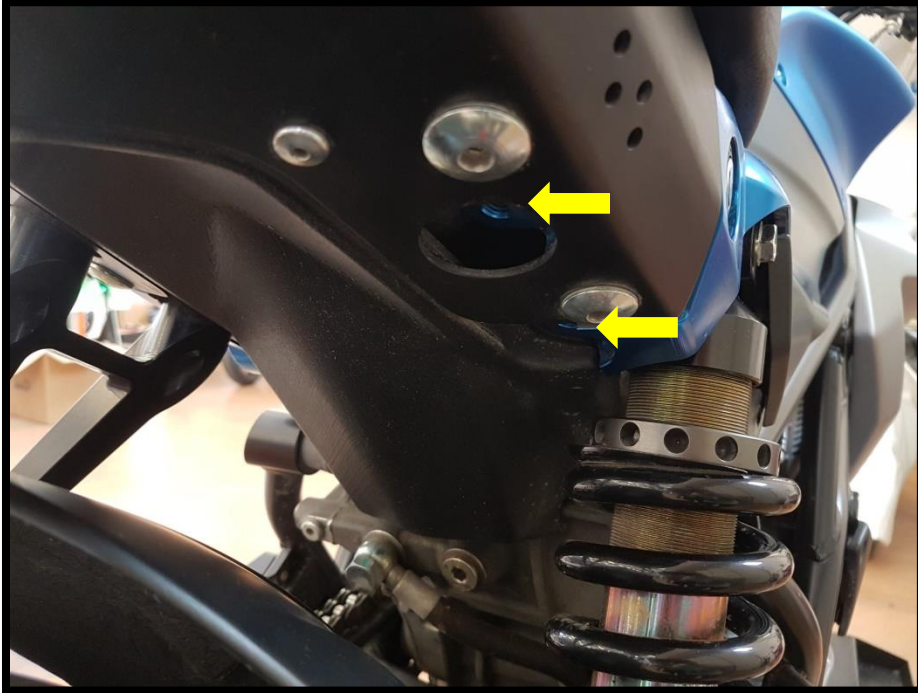
EsseEsse 9 SIDE BAGS – Rack Kit Assembly instructions

Authorized Energica Dealers

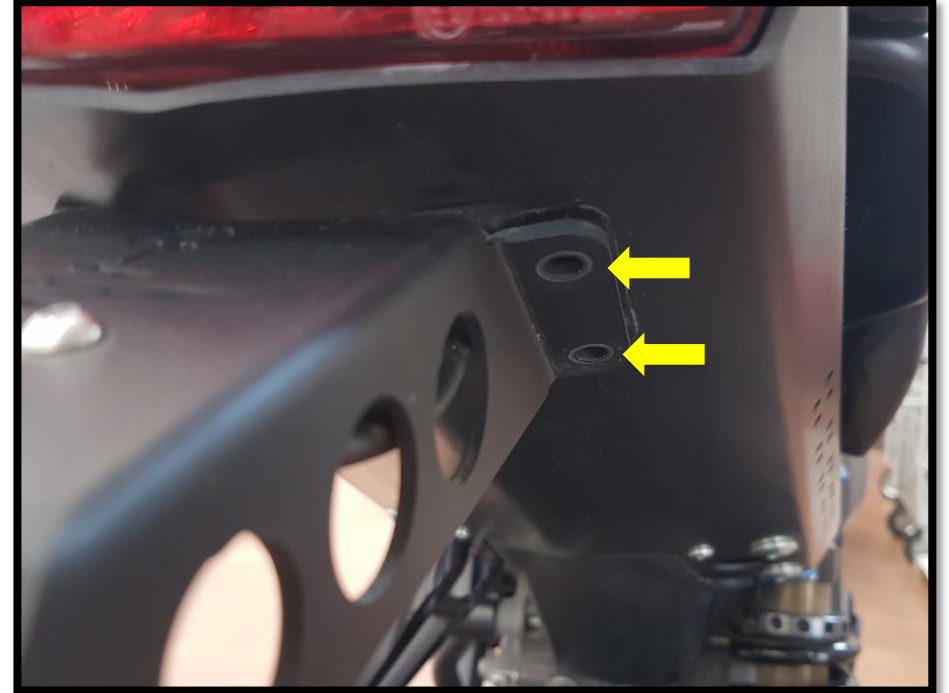


SIDE BAGS AND RACK KIT – ENA003986	
CLASS	TIGHTENING TORQUE
A	6 Nm
B	30 Nm
C	10 Nm
D	10 Nm





REMOVE THE RIGHT PASSENGER FOOTPEG



REMOVE THE 2 RIGHT SCREWS OF THE
LICENSE PLATE HOLDER



INSERT THE 2 BUSHINGS INSIDE THE
FOOTPEG HOUSING



PUT THE WASHERS ON THE FOOTPEG
SCREWS (B)



FIT THE FOOTPEG SCREWS IN ORDER TO MATCH THE RIGHT BAG HOLDER, THE BUSHINGS AND THE FOOTPEG



FIT AND SCREW THE RIGHT FOOTPEG WITHOUT COMPLETELY TIGHTENING



SCREW THE RIGHT SIDE OF THE LICENCE
PLATE HOLDER WITHOUT COMPLETELY
TIGHTENING



REMOVE THE LEFT PASSENGER FOOTPEG



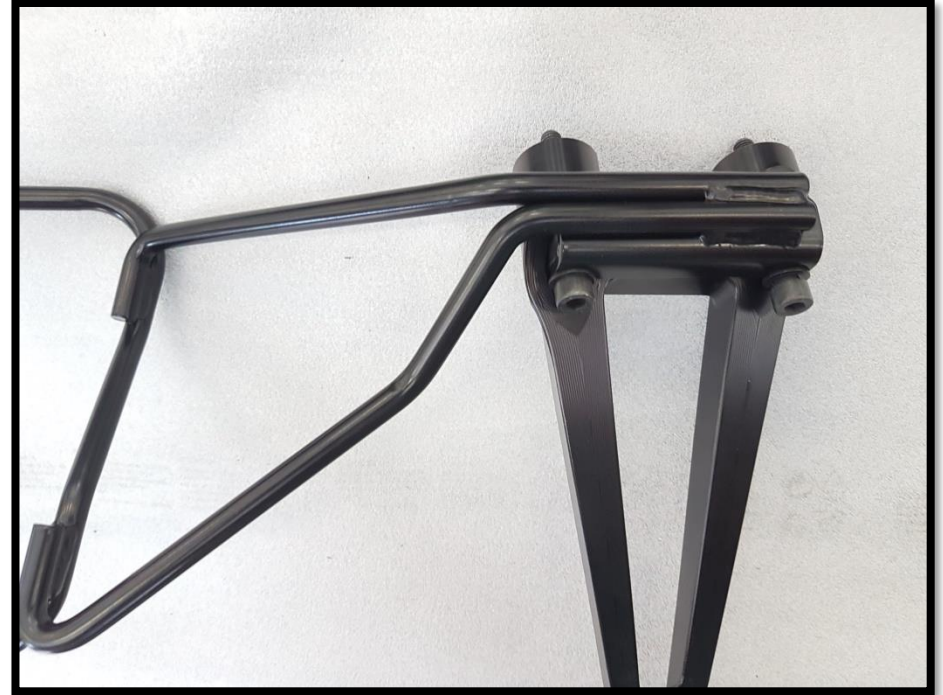
REMOVE THE 2 LEFT SCREWS OF THE
LICENSE PLATE HOLDER



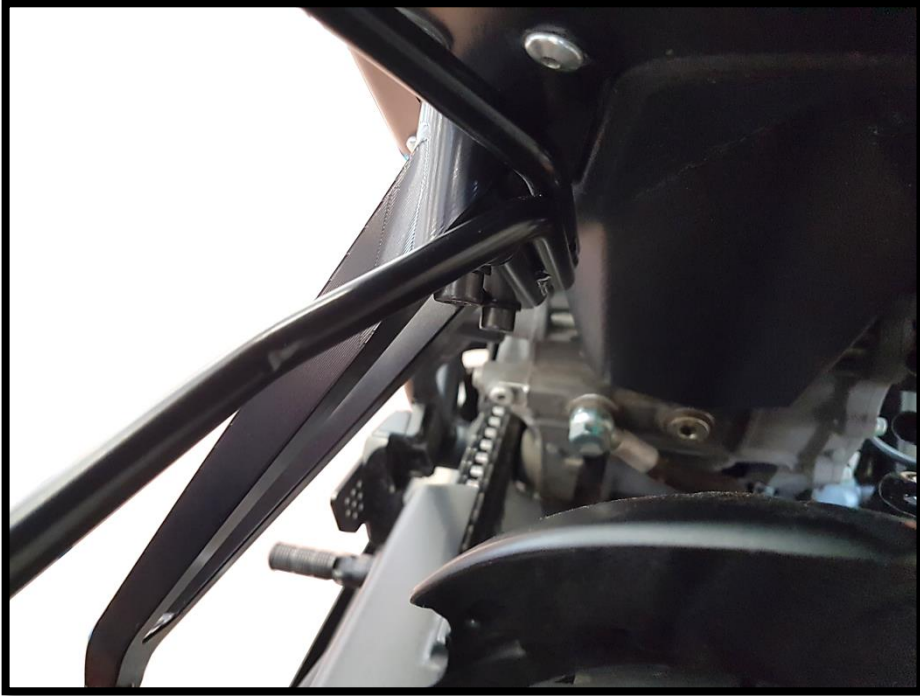
INSERT THE 2 BUSHINGS INSIDE THE
FOOTPEG HOUSING



PUT THE WASHERS ON THE FOOTPEG
SCREWS (B)



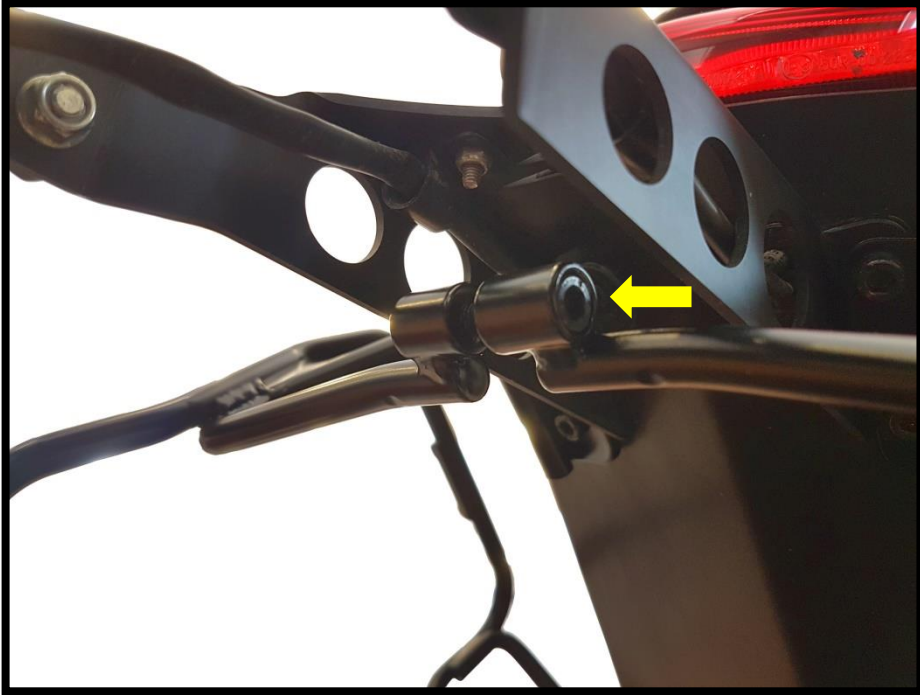
FIT THE FOOTPEG SCREWS IN ORDER TO
MATCH THE LEFT BAG HOLDER, THE
BUSHINGS AND THE FOOTPEG



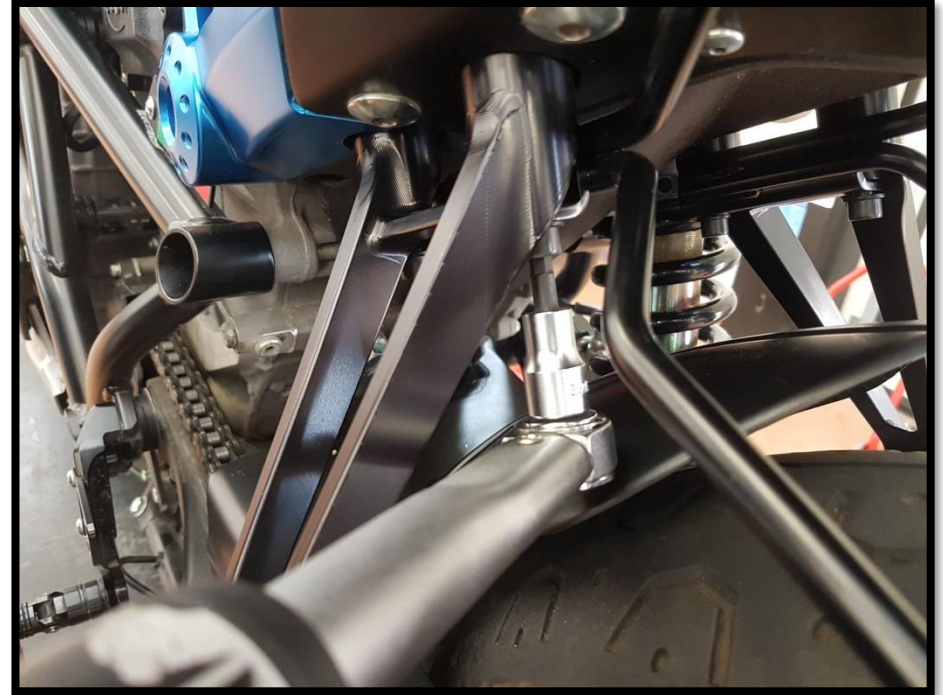
**FIT AND SCREW THE LEFT FOOTPEG
WITHOUT COMPLETELY TIGHTENING**



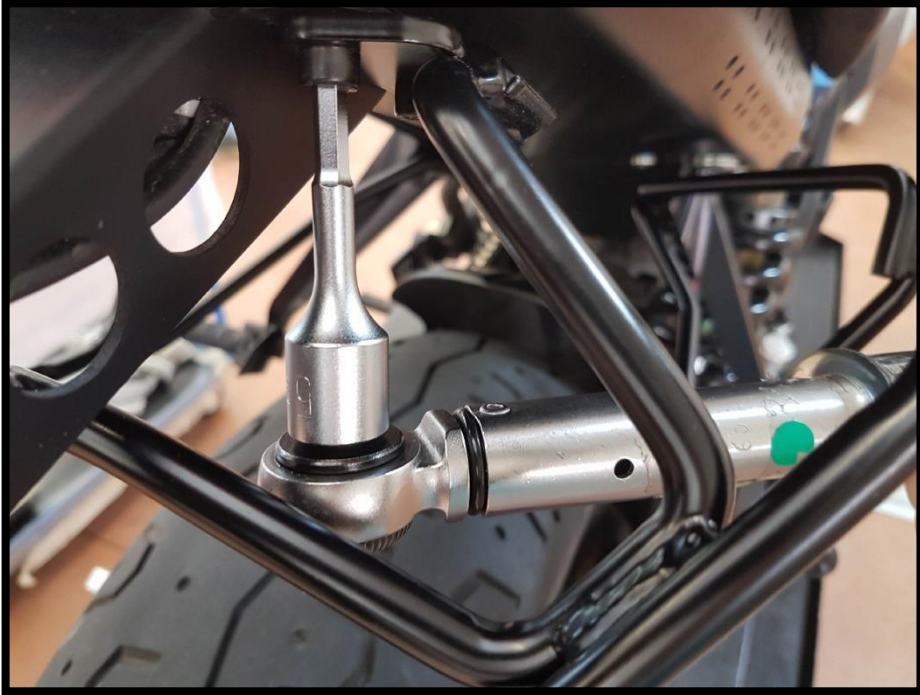
**SCREW THE LEFT SIDE OF THE LICENCE
PLATE HOLDER WITHOUT COMPLETELY
TIGHTENING**



UNDER THE LICENCE PLATE HOLDER FIT THE INDICATED SCREW (D) AND TIGHTEN AT 10Nm / 7.4ft lb



TIGHTEN THE 4 FOOTPEGS SCREWS (B) AT THE TORQUE OF 30Nm / 22.1ft lb



TIGHTEN THE 4 LICENCE PLATE SCREWS (C)
AT THE TORQUE OF 10Nm / 7.4ft lb



ASSEMBLE THE 4 PINS ON THE LOWER PART
OF BOTH BAG RACKETS AS SHOWED IN THE
PICTURE



TIGHTEN THE 4 PINS AT 6Nm / 4.4ft lb