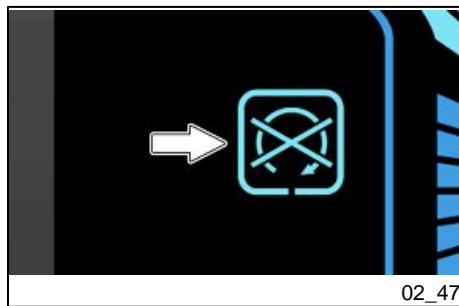


CAUTION

EXCEPT IN THE CASE OF AN EMERGENCY, NEVER USE THE MOTOR CUT-OUT SWITCH WHILE THE VEHICLE IS MOVING.



02_47

The icon on the digital display illuminates when the emergency stop switch **A** is set to position "1" **OFF**.



02_48

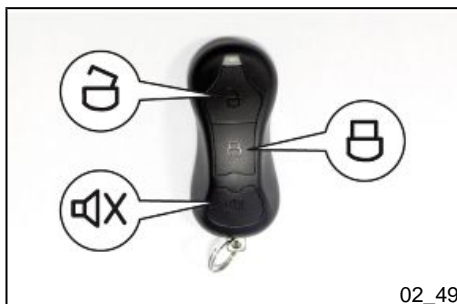
Keys (02_48)

The vehicle is also equipped with a duplicate of the remote control "A" and a key "B".

The key is supplied in a single copy and is used to open the saddle in the event of an emergency (electrical opening failure).

WARNING

KEEP THE DUPLICATE OF THE REMOTE CONTROL IN A SAFE PLACE AS IT IS INDISPENSABLE FOR ANY DUPLICATIONS, IN ORDER TO AVOID THE REPLACEMENT OF ALL COMPONENTS OF THE "PIAGGIO KEYLESS" SYSTEM.

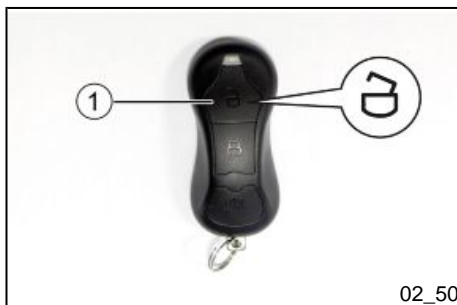


Remote control (02_49, 02_50, 02_51, 02_52, 02_53, 02_54, 02_55, 02_56, 02_57, 02_58, 02_59)

The vehicle is equipped with a remote control for using the "**Piaggio Keyless**" system, which allows to:

- enabling the start up;
- deactivating the start up;
- search the vehicle (Bike Finder).

The remote control is supplied in duplicate and coupled, in the factory, to the electronic control unit of the system positioned inside the vehicle.

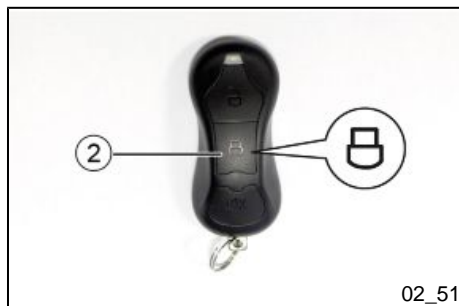


The remote control is necessary to be able to use the following functions:

ENABLING THE STARTER SWITCH

Initial conditions: Vehicle at a standstill and starter switch on "OFF".

1. Press the button "1" of the remote control; the ring around the switch will start flashing and **a double audible signal** will sound to confirm the unlocking of the rotation of the starter switch. Once enabled, it will be possible to turn the switch to "**ON**" to allow the vehicle to be started.
2. **Automatic locking of the starter switch:** if the starter switch is not turned to "**ON**" **within about 30 seconds** after enabling it, the safety system will automatically block the rotation of the switch itself, preventing the vehicle from starting.
3. **Temporarily deactivating the automatic locking of the starter switch:** briefly press the button "1" on the remote control twice within 2 seconds to temporarily unlock the switch; in this condition the ring will remain flashing until the switch is turned to "**ON**". At the next restart, the timing returns to **30 seconds**.



02_51

DEACTIVATING THE STARTER SWITCH

By pressing the button "2" the starter switch deactivates; the disabling will be indicated by the turning off of the lighting of the ring around the switch and an acoustic signal.

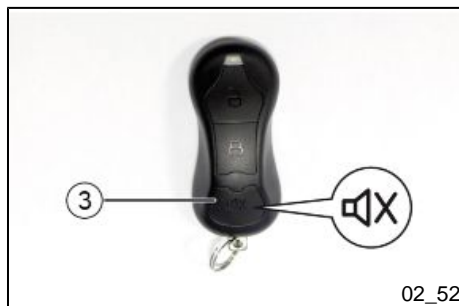
The switch can only be disabled after stopping the vehicle and turning the starter switch to "OFF".

With the switch in the "OFF" position, it will automatically disable after about 30 seconds of inactivity.

WARNING



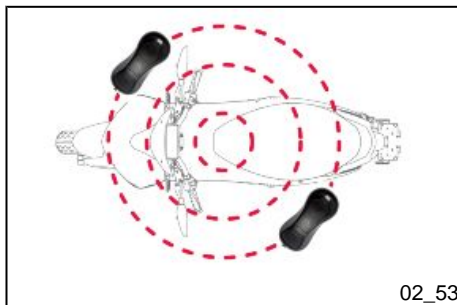
IT IS RECOMMENDED TO DISABLE THE STARTER SWITCH AFTER USING THE VEHICLE BY ONLY USING THE SPECIAL BUTTON "2" ON THE REMOTE CONTROL AND NOT WAIT FOR THE AUTOMATIC DISABLING.



02_52

RECOGNITION OF THE VEHICLE WITH AN ACOUSTIC SIGNAL

By pressing the button "3" with the starter switch in the "OFF" position, the vehicle recognition will be activated by emitting acoustic signals.



To allow the vehicle to operate, the remote control must be in the vicinity of the receiving control unit.

WARNING



THE "PIAGGIO KEYLESS" SYSTEM USES RADIO WAVES. THEREFORE THE RANGE OF OPERATION MAY VARY OR IT MAY NOT FUNCTION PROPERLY UNDER THE FOLLOWING CONDITIONS:

- **WHEN THE REMOTE CONTROL BATTERY IS LOW;**
- **NEAR STRUCTURES THAT GENERATE NOISE OR INTENSE RADIO WAVES SUCH AS TV ANTENNAS, POWER PLANTS, RADIO STATIONS OR AIRPORTS;**
- **WHEN THE REMOTE CONTROL IS NEAR A NOTEBOOK/PC OR OTHER WIRELESS COMMUNICATION DEVICES, SUCH AS A RADIO OR MOBILE PHONE;**
- **WHEN THE REMOTE CONTROL COMES IN CONTACT OR IS COVERED BY METALLIC OBJECTS.**
- **WHEN THE REMOTE CONTROL IS NEAR THE ENGINE, DUE TO THE ELECTROMAGNETIC WAVES GENERATED BY THE IGNITION SYSTEM.**

WARNING



VIOLENT SHOCKS MAY DAMAGE THE ELECTRONIC COMPONENTS OF THE REMOTE CONTROL. TO ENSURE THE PERFECT EFFICIENCY OF SUCH INTERNAL ELECTRONIC DEVICES, DO NOT LEAVE THE REMOTE CONTROL EXPOSED TO DIRECT SUNLIGHT. AVOID DROPPING THE REMOTE CONTROL OR THE CONTACT WITH WATER OR OTHER LIQUIDS.

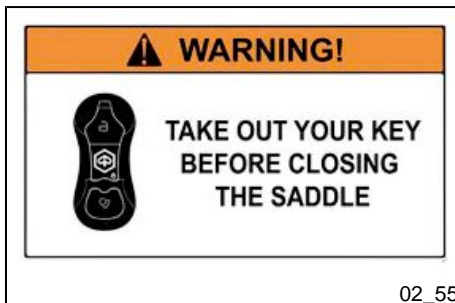


02_54

CAUTION**ALWAYS CARRY THE REMOTE CONTROL WITH YOU.**

IF, AFTER STARTING THE VEHICLE, THE USER HAS NO LONGER THE REMOTE CONTROL, TO TURN OFF THE VEHICLE IT WILL BE SUFFICIENT TO TURN THE STARTER SWITCH TO THE "OFF" POSITION AND WAIT FOR THE AUTOMATIC DISABLING OF THE SWITCH.

HOWEVER IT WILL BE NECESSARY TO RECOVER THE REMOTE CONTROL FOR A NEW START.



02_55

CAUTION

BEFORE CLOSING THE SADDLE, MAKE SURE THE REMOTE CONTROL AND KEY HAVE NOT BEEN LEFT INSIDE THE STORAGE COMPARTMENT UNDER THE SADDLE.

THE KEYLESS FUNCTION OF THE VEHICLE WILL AUTOMATICALLY LOCK AFTER 30 SECONDS AND THE SADDLE CANNOT BE REOPENED IF THE REMOTE CONTROL AND KEY ARE INSIDE.

PASSIVE ENABLING OF THE STARTER SWITCH

In the case of a fully discharged remote control battery or under conditions of external radio disturbances, the starter switch cannot be enabled.

Inside the remote control there is a mechanical key for passive enabling of the switch; proceed as follows:

act on the tab on the remote control and remove the key;



push the tab up to the middle of the switch;



open the tab by rotating it downwards;





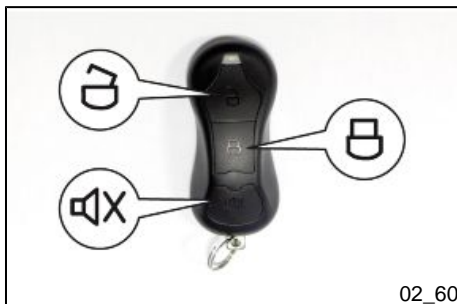
Insert the mechanical key in the special housing on the switch **until the end stop**.

At this point the starter switch will be enabled and it is allowed to start the vehicle, open the saddle and insert the steering lock.

WARNING



WHEN REMOVING THE MECHANICAL KEY, MAKE SURE TO PERFECTLY CLOSE THE TAB IN THE CENTRE OF THE SWITCH SO AS TO AVOID ANY WATER INFILTRATION.



Remote control programming (02_60)

To purchase and program new remote controls or if they are lost, contact an **Authorised Service Centre**.

It will be possible to program a maximum of 2 new remote controls.

Remote control battery replacement (02_61, 02_62, 02_63, 02_64, 02_65, 02_66)

If the remote control LED no longer lights up while using it, it means that the battery is low and therefore the remote control is not functioning.

The battery must be replaced as soon as possible.

The battery is a 3 Volt **CR2032** button type battery.



Uncouple the two halves of the remote control by using a plain slot screwdriver and sliding it all around.

Extract the circuit from the lower one of the halves.



Remove the empty battery.



Place the new battery with the positive pole (where the battery symbol is present) facing the contact strips.



Refit the remote control carrying out the removal procedure in reverse order, by pressing the lower part and the two clip-on halves gently with your fingers.