



"Made for iPod" and "Made for iPhone" mean that an electronic accessory has been designed to connect specifically to iPod or iPhone, respectively, and has been certified by the developer to meet Apple performance standards. Apple is not responsible for the operation of this device or its compliance with safety and regulatory standards. Please note that the use of this accessory with iPod or iPhone may affect wireless performances.

iPhone and iPod Touch are trademarks of Apple Inc., registered in the U.S. and other countries.

APRILIA MULTIMEDIA PLATFORM

Caponord introduces an innovative multimedia platform for your Aprilia motorbike aimed to maximum safety and riding pleasure.

APRILIA MULTIMEDIA PLATFORM (AMP) consists of an electronic unit, connecting the vehicle to the iPhone/iPod by Bluetooth®, and a free app that transforms the iPhone/iPod in an advanced dashboard, including several new features:

- Virtual dashboard
- Trip Computer with data-log function
- Advanced navigation



APRILIA MULTIMEDIA PLATFORM (AMP) electronic unit is "Made for iPhone", "Made for iPod" certified.

AMP: DEVICE CONNECTION

- Activate Bluetooth function on your iPhone/iPod
- Search for 'AMP' device.
- Connect 'AMP' device.

After the first connection, AMP will connect automatically at key-on.

Once the connection has been established, the app will start automatically if the device screen is unlocked.

The app is automatically closed at key-off. A sound and a screen image will remind to take your iPhone/iPod from the bike.

Remarks:

After a key-off event, the app cannot start automatically before 20s.

In case of missing connection, close the app with the 'exit' button or cancel it from the background menu and start again the app manually.

If the previously paired device is outside the connection range, after 20s AMP can be paired with a new iPhone/iPod.

AMP: DEFAULT SETTINGS



parking lot finder
↳ uses google maps

Fuel consumption

top speed

mpg

3-9 K rpm

Measurement units: switch between international and US units for speed and fuel consumption.

Find My Bike: automatic reminder of vehicle position at key off.

Touch screen: function disabled by default above 5km/h for safety reasons.

Data log: activates recording of GPS position and vehicle data (.txt file) to be displayed on computer.

Analog Interface: switches between two dashboard styles (analog and digital).

Shift Light: the slider modifies the shift light point from 3000 to 9000rpm. In the 'AUTO' position, the shift light is adjusted automatically depending on engine temperature.

AMP: MAIN FUNCTIONS

With AMP you can access several functions realized through the info from the vehicle combined with iPhone/iPod features:



DASHBOARD: a virtual touch screen dashboard displaying all vehicle parameters.

NAVI: access to advanced geo-referencing functions and to 'turn by turn' navigation app if already installed on the device.

TRIP: visualization of trip summary and stored data management.

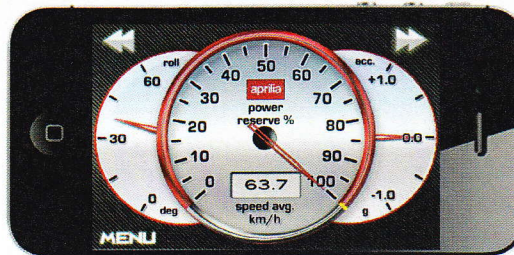
USER MANUAL: use and maintenance manual of the vehicle.

BONUS: visualization of your distance from Nordkapp.

GPS "Google" maps

↳ nord kapp, symbolic origin of CapoNord

AMP: ANALOG DASHBOARD



Four parameters are displayed simultaneously: by touching the main indicators or the digital screen it is possible to set the favorites vehicle information.

Center indicator parameters:

- Speed
- RPM
- Crank torque
- Rear wheel thrust
- Crank power
- Power reserve
- Acceleration wheel slip
- Estimated roll angle* → *iPhone's gyro*
- Acceleration
- Instant fuel consumption
- Average fuel consumption
- Average speed

Digital button parameters:

- Speed
- RPM
- Crank torque
- Rear wheel thrust
- Crank power
- Power reserve
- Acceleration wheel slip
- Estimated roll angle*
- Acceleration
- Instant fuel consumption
- Average fuel consumption
- Average speed
- Gear
- Water temp
- Battery voltage
- Suggested gear for eco-riding

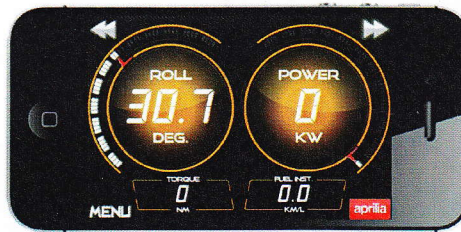
Left/Right indicator parameters:

- Battery voltage
- RPM
- Crank torque
- Rear wheel thrust
- Crank power
- Power reserve
- Acceleration wheel slip
- Acceleration
- Instant fuel consumption
- Average fuel consumption
- Estimated roll angle*
- Water temp

*The vehicle roll angle is calculated by combining vehicle data and iPhone/iPod gyros through an algorithm derived from the know-how of Piaggio Group in racing applications.

For maximum accuracy it is recommended to place the device in landscape mode and as vertical as possible. The feature is available from iPhone 4 and iPod Touch 4th gen.

AMP: DIGITAL DASHBOARD



Four parameters are displayed simultaneously: by touching the digital screens it is possible to set the favorites vehicle data.

Parameters for big display:

- Speed
- RPM
- Crank torque
- Rear wheel thrust
- Crank power
- Power reserve
- Acceleration wheel slip
- Estimated roll angle*
- Acceleration
- Instant fuel consumption
- Average fuel consumption
- Average speed
- Battery voltage
- Water temperature

Parameters for small display:

- Speed
- RPM
- Crank torque
- Rear wheel thrust
- Crank power
- Power reserve
- Acceleration wheel slip
- Estimated roll angle*
- Acceleration
- Instant fuel consumption
- Average fuel consumption
- Average speed
- Gear
- Battery voltage
- Water temperature
- Suggested gear for eco-riding

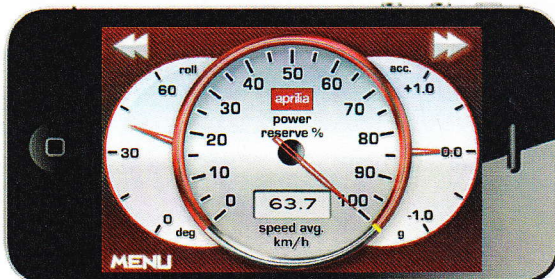
*The vehicle roll angle is calculated by combining vehicle data and iPhone/iPod gyros through an algorithm derived from the know-how of Piaggio Group in racing applications.

For maximum accuracy it is recommended to place the device in landscape mode and as vertical as possible. The feature is available from iPhone 4 and iPod Touch 4th gen.

AMP: ADAPTIVE REV LIMITER / SHIFT LIGHT

The shift light threshold and suggested maximum RPM are adjusted automatically depending on coolant temperature (ranging from 5000 to 9000 rpm).

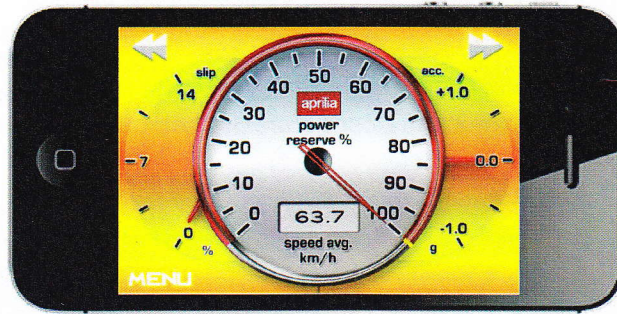
While approaching the maximum suggested RPM value, the background color progressively shifts to red and starts to blink over the rev limit.



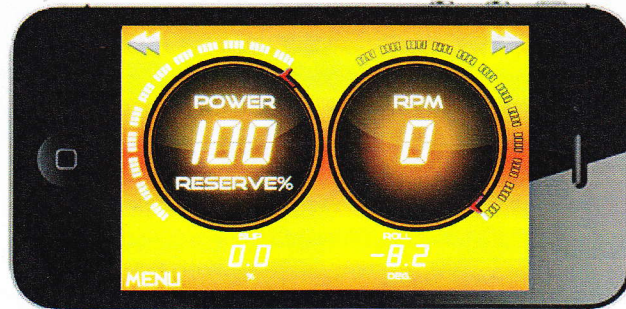
Remarks: The PRM limit for shift light can be adjusted manually in the settings menu.

AMP: ATC INDICATOR

The indication of Aprilia Traction Control intervention is repeated on AMP by the flashing of dashboard background.



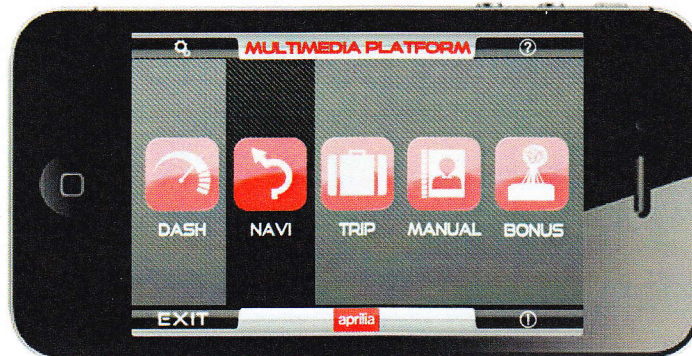
→ When "TC" begins to kick in, background changes color



AMP: NAVI - 1

The geo-referencing features of the mobile device and internet connection are used to identify:

- The last position of the vehicle before key-off
 - The nearest gas stations
 - The nearest authorized service centers
- uses google maps to find nearest gas station



AMP: NAVI - 2

Find My Bike:

→ If you forget where you parked

AMP automatically stores the last position of the vehicle before the engine is turned off: this can help to find the vehicle in case you forgot the parking location (e.g. in a city you are unfamiliar with). Vehicle position is shown on the map by touching "P" icon on the screen. Navigation instructions to reach the vehicle can be set on pre-installed navigations apps. A full screen image will appear when app closes if the position has been stored.



Remarks: The function can be disabled from settings page.

not a logach; phone has to be on the bike

AMP: NAVI - 3

Gas stations:

If your vehicle is low on fuel, the system automatically provides you the location of the nearest gas stations in the surroundings and sets the route to follow directly on the pre-installed navigation apps on iPhone/iPod.



Aprilia Service:

AMP may query the Piaggio Group database in order to find the nearest service center and to set the route directly on the navigation app pre-installed on your iPhone/iPod.

E-mail and phone contacts of the selected service center are available from the details page.

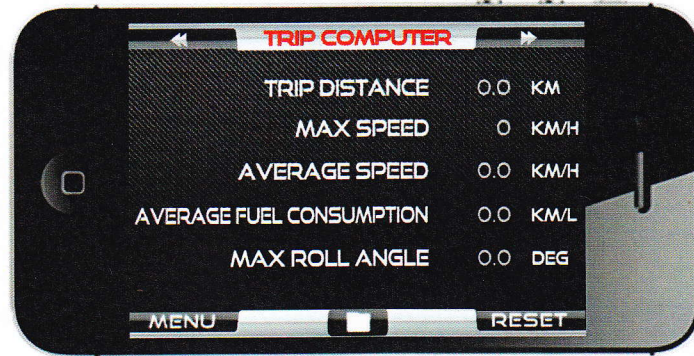


AMP: TRIP

AMP stores several trip statistics data to be displayed as summary on the screen or saved in a text file to be visualized and analyzed on your computer later on.

Real time data logging (GPS position included) need to be enabled from settings page.

The folder button allows access to the files manager page.

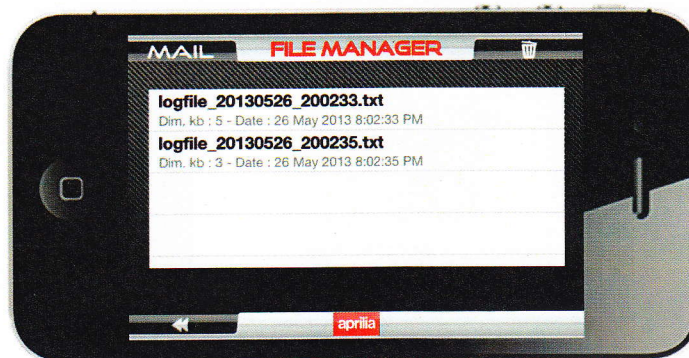


Remarks: data logging is stopped whenever the app switches in background mode, since data streaming on Bluetooth channel is not allowed by iOS communication protocols.

AMP: FILE MANAGER - 1

The data stored by AMP are shown in a table menu ordered by date (older first).

The files can be sent by email or deleted by selecting the relative row and by pressing, respectively, the 'Mail' or trash icon.



File dimension in kilobytes and file date are reported below the file name.

AMP: FILE MANAGER - 2

The data stored by AMP may be saved (in text format) on your computer from iTunes functions as follows:

- In iTunes go to the 'app' tab in the menu of your device
- Select 'Aprilia AMP' icon in the 'Files sharing panel'.
- Select 'Log' folder in 'Aprilia AMP documents' panel.
- Select 'Save in' option and choose the computer folder where data will be stored.

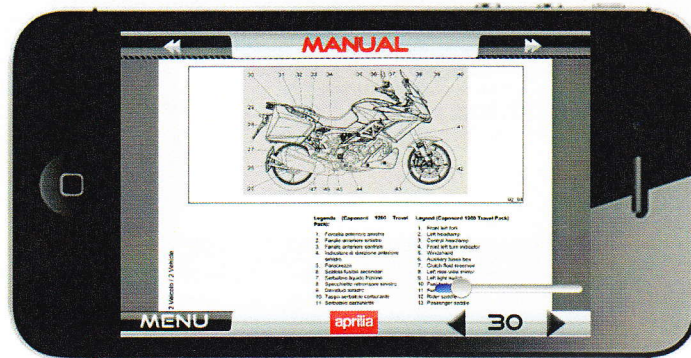
Remarks: Continuous use of datalog function may generate large files. The data can be deleted from the iPhone/iPod by simply selecting the 'Log' folder in iTunes and by pressing the 'Del' key of your computer.

File names are composed by numbers indicating the time of datalog start in the following sequence: year, month, day, hour, minute, second.

AMP: USER MANUAL

AMP let you browse the user and maintenance manual of the vehicle directly on your mobile device.

owners manual



AMP: BONUS

AMP constantly evaluate the distance between Nordkapp (Caponord) and your current GPS position. A nice reminder for one of the best road trips you can have with your Aprilia.

