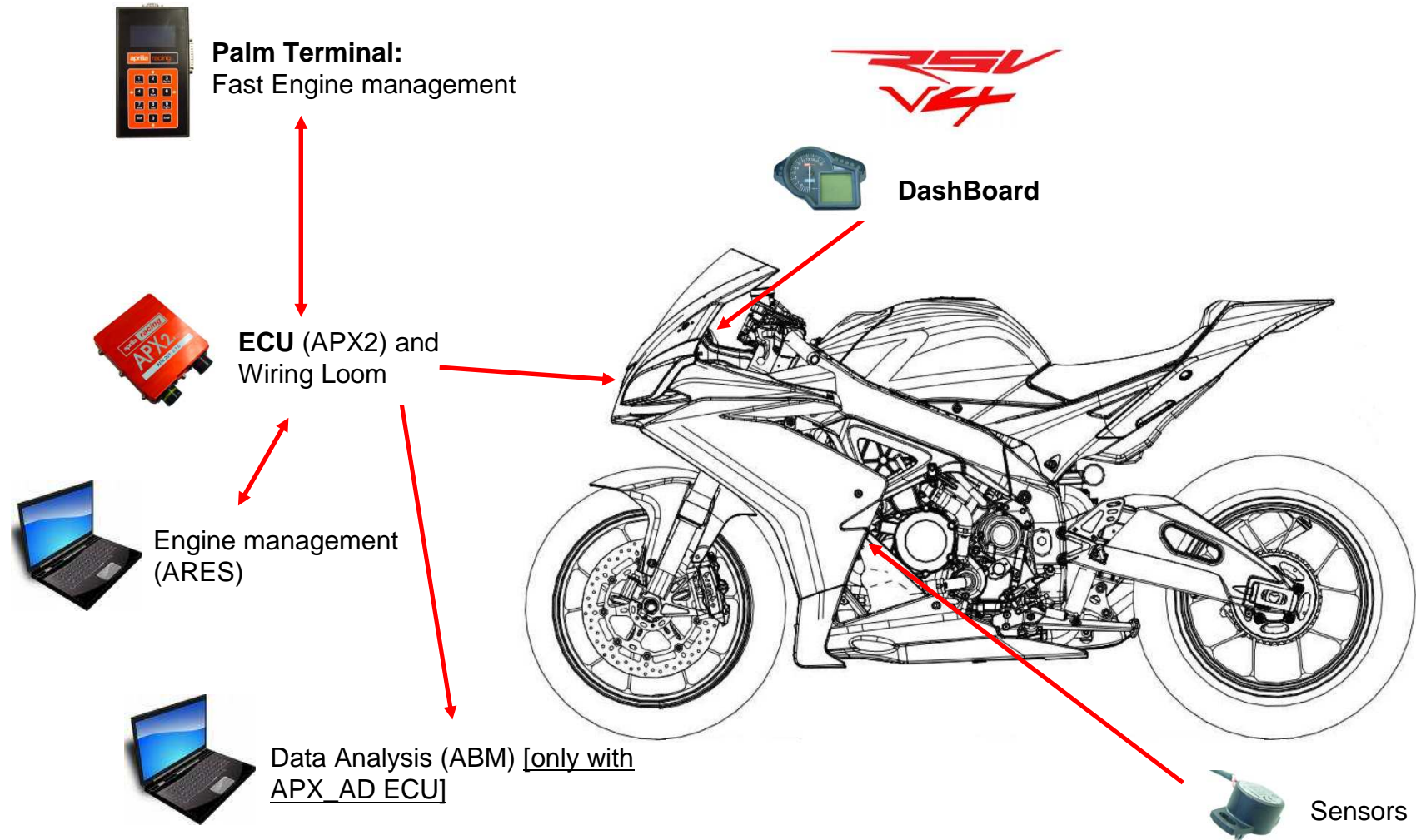


Electronic Kit

Based on its experience on racing bikes over the last 20 years (Off road, SBK, Road racing), Aprilia Racing has developed electronic racing kits particularly suited for its RSV1000.

Below, there is a brief description to these systems and their capabilities. Please, refer to single products manuals for a detailed description.

Electronic Kit





Aprilia Racing Electronic ECUs

Engine Management (APX_CM)

Engine Management ECUs replace standard RSV4 ECU, and allow:

- Ignition and Injection mapping (with ARES Software tool)
- Fast Setup of several Bike parameters
- Built in Bike strategies:
 - TCS
 - Engine braking
 - Gear and Gearshit
 - Distance Based
- Diagnostic tools

Data Acquisition (APX_AD)

Whith the DataLogging option, APX_CM became APX_AD, that allow (in addition to standard APX_CM functionalities):

- Sensors and engine parameters monitoring and management
- Data Acquisition
- Data analysis with ABM platform



Aprilia Racing Electronic Devices

Available APX ECUS:

- APX_CM for SST and SBK
- APX_AD for SBK with ABM Base

Available Bike and Hardware Tools:

- Wiring loom for Aprilia RSV4
- RSV4 Racing Dashboard
- Palm system for Bike parameters SetUp
- Beacon, Sensors, etc.

Available Software tools

- ARES engine management software for APX_xx
- ABM Base
- ABM Full
- Analisi



Software tools

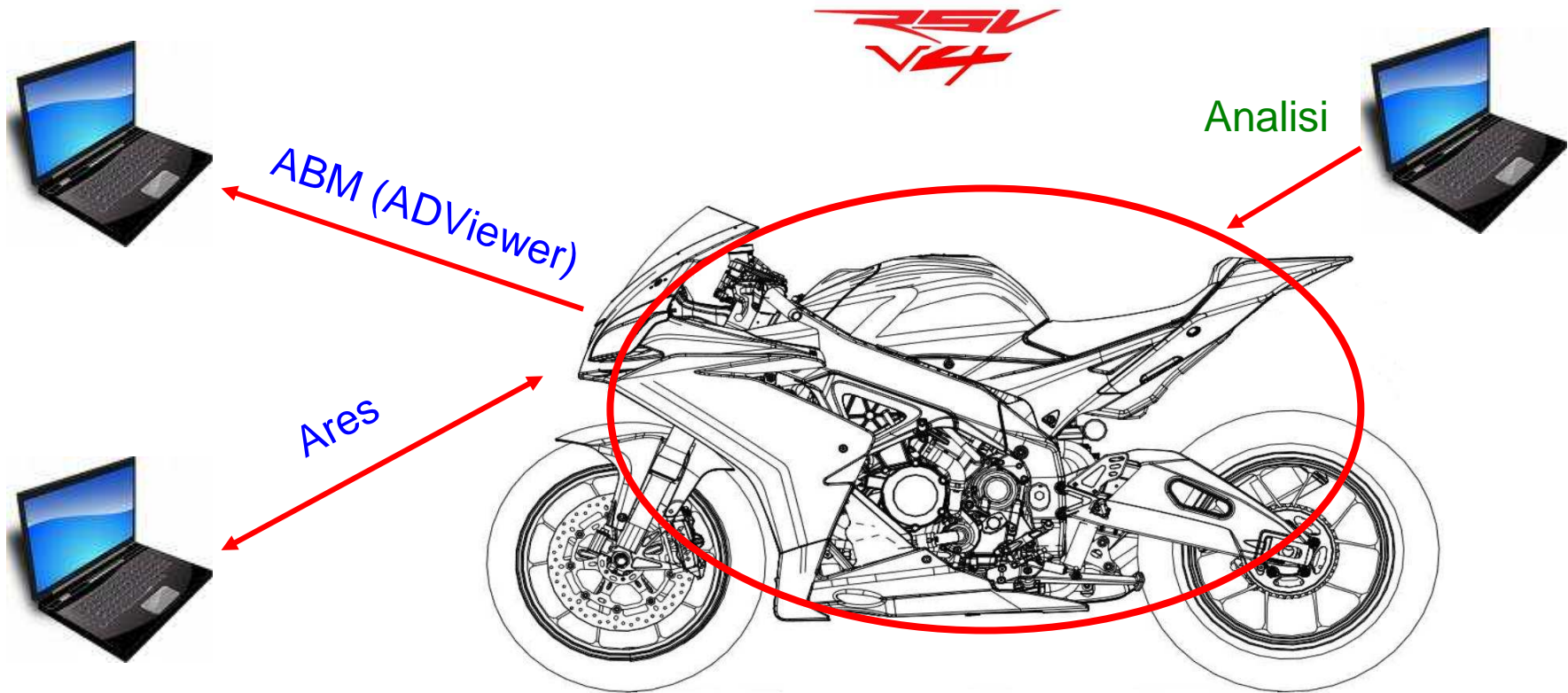
In addition to the Electronic kit, Aprilia Racing has developed software tools to support the technician's work and to help them to take right decision in short time.

The software kit includes

1. software for bike setup calculation (Analisi)
2. software for view and analysis telemetry data (ABM - ADViewer)
3. software for engine parameter management (Ares)



Aprilia Racing software tools



Analisi

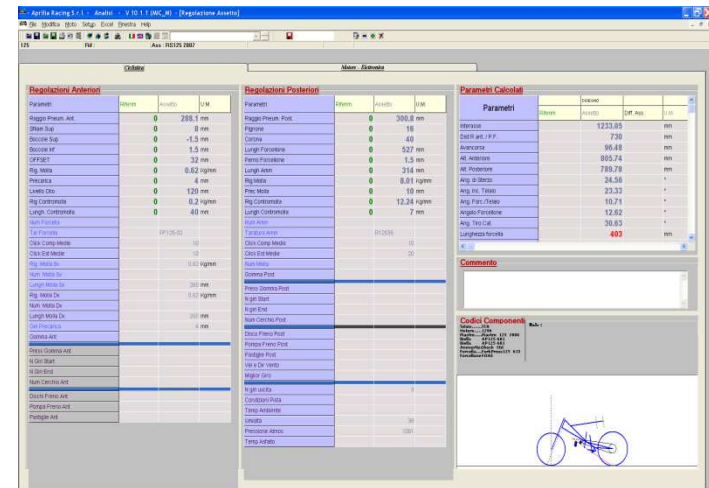
By modifying regulations like :

Top fork height, upper bush, lower bush, offset, engine sprocket, wheel sprocket, swing arm length, and others...,

the software calculates following parameters for the bike setup :

wheel base, trail, front height, rear height, steering angle, chassis angle, swing arm angle, chain force angle, swing/chassis angle.

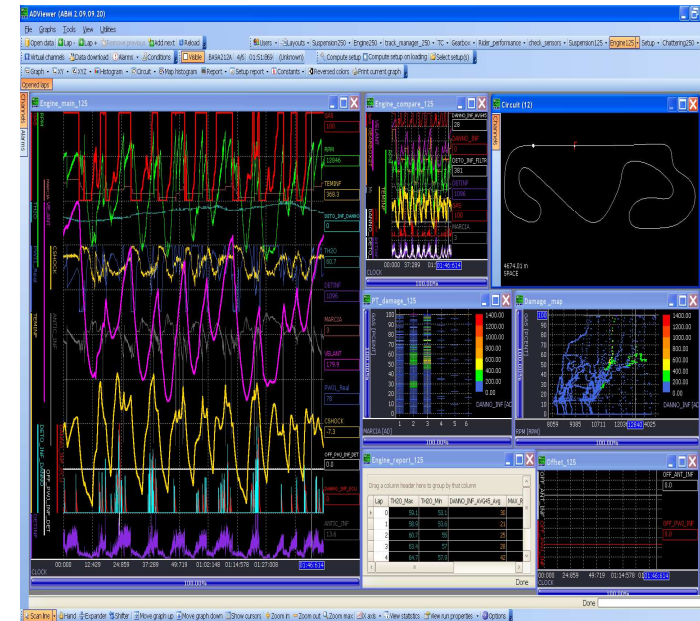
Furthermore, the software includes a tool for gear ratio management and for final gearing and swing arm setup.





ABM - ADViewer

It downloads, views and analyses logged data. It is available in 2 versions : base and full. ABM base is a light version that allows data downloading and simple analysis . ABM full, allows a complete analysis and includes a power tool to create complex mathematical functions. Following, there is a schema that explains the differences between ABM base and full.





ABM Base

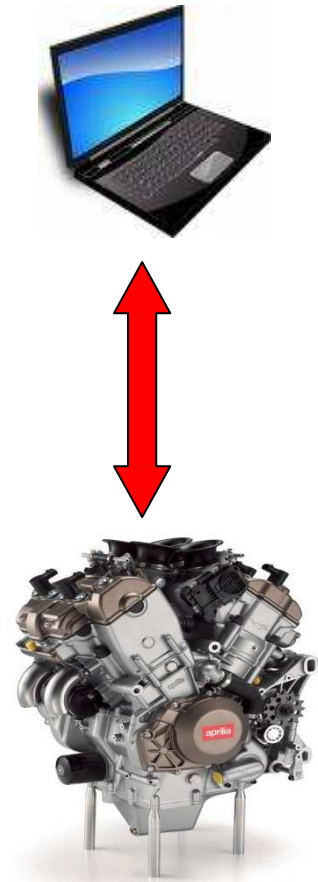
- Data downloading from ECU to PC
- APX file manager (Session browser)
- 3 graph time/distance based
- 1 user and 1 layout
- 1 Circuit graph
- Lap comparison
- Statistics

ABM Full – ABM Moto 3

- Data downloading from ECU to PC
- APX file manager (Session browser)
- Graph time/distance based (unlimited)
- Graph XY (unlimited)
- Graph XYZ (unlimited)
- Histogram (unlimited)
- Map histogram
- Simple or parametric circuit graph (unlimited)
- Report (single lap, single run, multi run)
- Custom tools for graphics windows management
- Lap comparison
- Statistics
- Multi user and multi layout management
- Channel filtering (average, FFT, transfer function)
- Mathematical functions editor (unlimited)
- Alarms manager
- Conditions manager
- Constants manager
- Export to other format (APX, ASCII,...)

ARES

Software for engine parameter management.
It downloads and uploads settings that controlling how the engine works, like injection and sparking maps, traction control and trasmission gear parameters, etc...



Software Price List- Year 2012

Software	Price ⁽¹⁾	Update	Hw Compatibility	
			APX_CM	APX_AD
ABM Base	600€ perpetual (Aprilia part number : COE10086)	500€		✓ (1 licence Free)
ABM Full	2300€ perpetual (Aprilia part number : COE10087) 1300€ for 1 year (Aprilia part number : COE10090)	1200€ (COE12041)		✓
Ares	600€ perpetual (Aprilia part number : COE10089)	500€	✓	✓
Analisi	3100€ perpetual (Aprilia part number : COE10088) 1900€ for 1 year (Aprilia part number : COE10091)	1800€	✓	✓
ABM Moto 3	2600€ perpetual (Aprilia part number : COE12040) 1500€ for 1 year (Aprilia part number : COE12039)	1400€ (COE12042)		✓
MapCorrector	500€ perpetual (Aprilia part number : COE12048)	400€		✓

The price is intended for one USB licence Key.

To download the software visit : <http://www.serviceaprilias.com/public/racing/index.asp>

(1) The price includes the updates for the year of purchase

(2) The perpetual licence can be updated only if all previous updates have been annually confirmed.